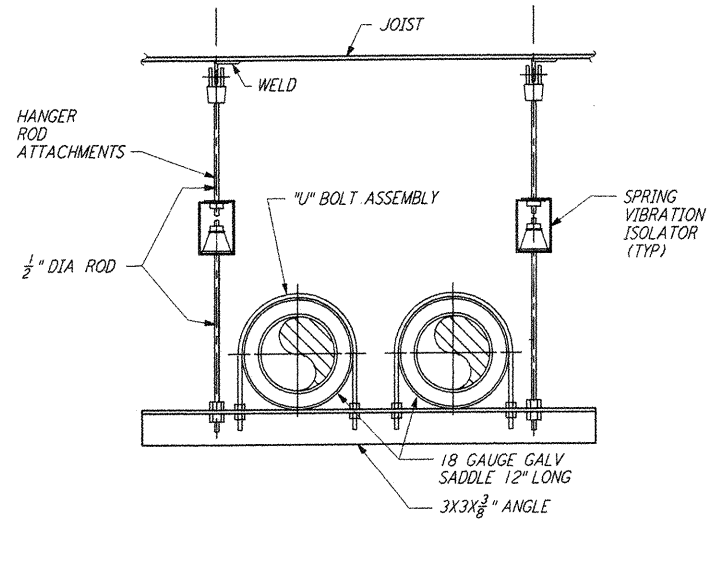
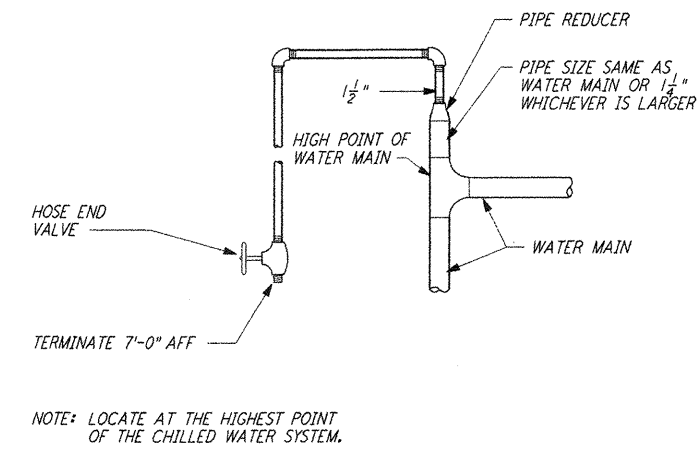


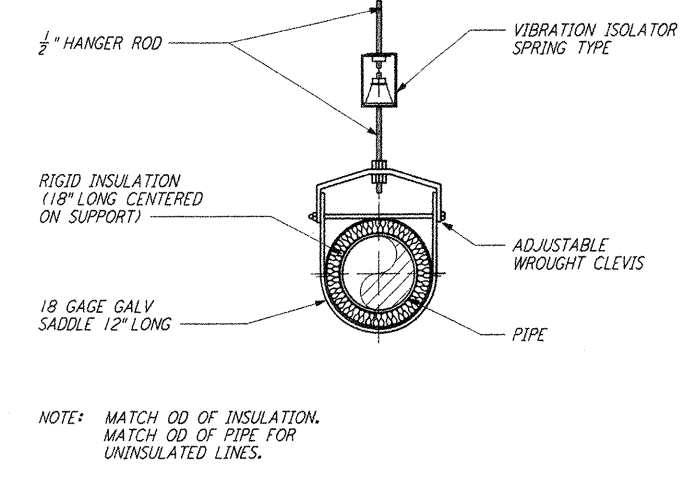
TYPICAL BASE ELBOW SUPPORT (1) REF
 NTS LA-H-412



PIPE HANGER - TRAPEZE (2) REF
 NTS LA-H-412



MANUAL AIR VENT (3) REF
 NTS LA-H-412



PIPE HANGER - SINGLE PIPE (4) REF
 NTS LA-H-412

NOTES:
 1. FOR LEGEND, ABBREVIATIONS AND GENERAL NOTES SEE SHEETS LA-H-001 AND LA-H-002.

not be reproduced, copied, loaned, exhibited, or used in any other way, except by written consent from PARSONS to the borrower.

This document and the design it covers are the property of PARSONS. They are loaned only with the borrower's expressed written agreement that they will

NO.	DATE	BY	CHKD	ENGR	PROJ	DESCRIPTION
1	8-7-98	DJB	AA	AA	MM	ISSUED FOR AS-BUILT

ISSUED FOR CONSTRUCTION
 DRAWN CLP 11-15-96
 CHECKED MN 10-25-96
 ENGINEER AA 1-23-98
 PROJ TM 11-15-96

AS-BUILT DRAWINGS

100 WEST WALNUT STREET
 PASADENA, CALIFORNIA

CALIFORNIA INSTITUTE OF TECHNOLOGY
 MASSACHUSETTS INSTITUTE OF TECHNOLOGY

LIGO-D960993-01-O

LASER INTERFEROMETER
 GRAVITATIONAL-WAVE OBSERVATORY
 SITE NO. 2 - LIVINGSTON, LOUISIANA

TITLE	SCALE	CONTRACT NUMBER	PROJECT NUMBER
HVAC DETAILS SHEET 2	NONE	PP150969	8094
SHEET NUMBER		REVISIONS	
LA-H-412		[Symbol]	

7:1 Aug 14 1998 14:08:24 1998 C:\PILOT\GUE\53-9682.DWG 52085 KLV9682.mw412.dwg