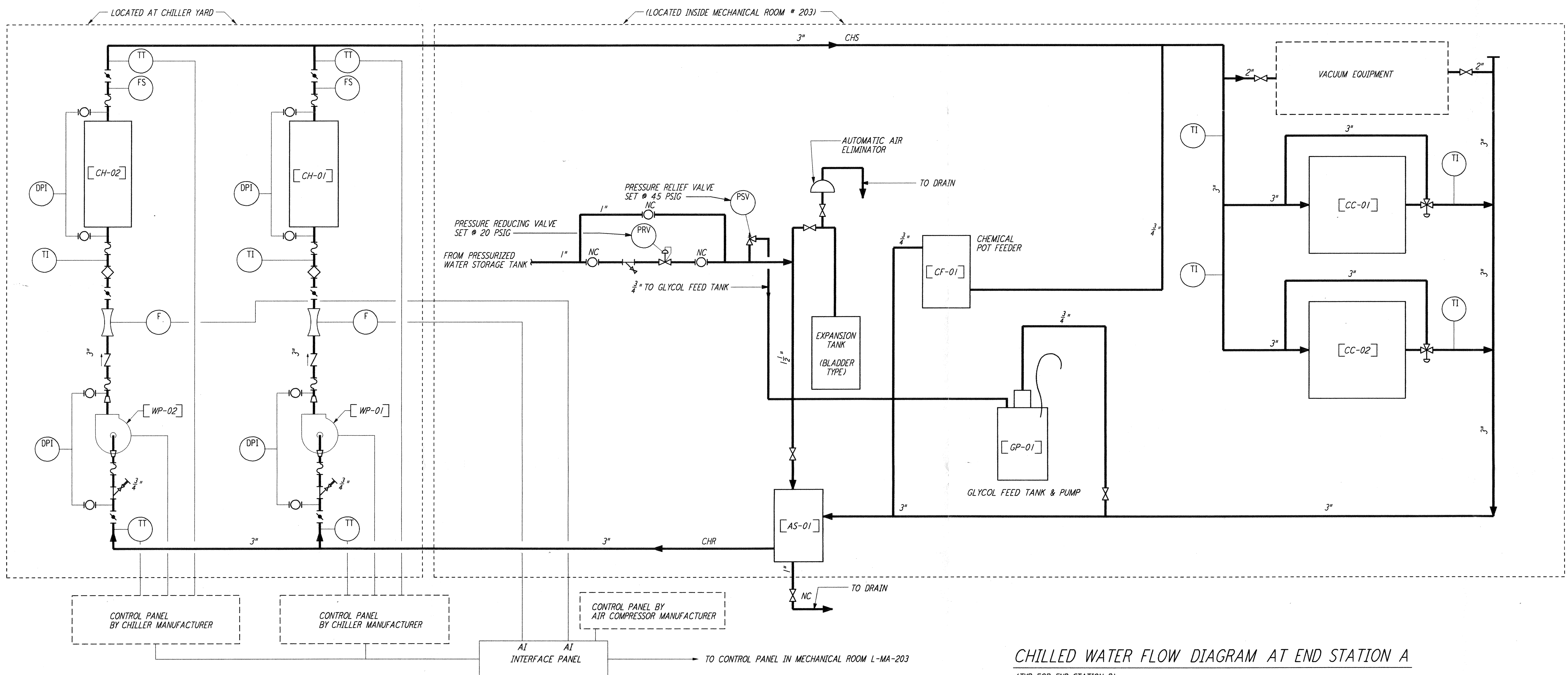


**END STATION A CONTROL DIAGRAM**  
 (TYP FOR END STATION B)

- NOTES:**
1. FOR LEGEND, ABBREVIATIONS AND GENERAL NOTES SEE SHEETS LA-H-001 AND LA-H-002.
  2. FOR PIPING DETAILS OF COOLING COILS, WATER CHILLERS, PUMPS AND CHEMICAL POT FEEDERS SEE SHEETS LA-H-411 AND LA-H-412.
  3. PNEUMATIC VALVES ARE INSTALLED IN ARM 1 ONLY, BUT THE CONTROLS SYSTEM IS NOT FUNCTIONAL, AS DIRECTED UNDER FWD 103R2. ARM 2 END STATION "A" HAS MANUAL VALVES INSTALLED.



**CHILLED WATER FLOW DIAGRAM AT END STATION A**  
 (TYP FOR END STATION B)

not be reproduced, copied, loaned, exhibited, or used in any other way, except by written consent from PARSONS to the borrower.

This document and the design it covers are the property of PARSONS. They are loaned only with the borrower's expressed written agreement that they will

NO.	DATE	BY	CHKD	ENGR	PROJ	DESCRIPTION
2	5-21-99	AO	AA	AA		ISSUED AS REVISED AS-BUILT
1	8-7-98	DJB	AA	AA	MDW	ISSUED FOR AS-BUILT

ISSUED FOR CONSTRUCTION  
 DRAWN: CLP 11-15-96  
 CHECKED: MN 10-25-96  
 ENGINEER: AA 7-23-96  
 PROJ: TDM 11-15-96

**AS-BUILT DRAWINGS**

**PARSONS**  
 100 WEST WALNUT STREET  
 PASADENA, CALIFORNIA

**LIGO**  
 CALIFORNIA INSTITUTE OF TECHNOLOGY  
 MASSACHUSETTS INSTITUTE OF TECHNOLOGY

**LIGO-D960988-02-O**

LASER INTERFEROMETER  
 GRAVITATIONAL-WAVE OBSERVATORY  
 SITE NO.2 - LIVINGSTON, LOUISIANA

HVAC  
 END STATION  
 CHILLED WATER & AIR FLOW  
 DIAGRAMS

SCALE: NONE  
 CONTRACT NUMBER: PPI50969  
 PROJECT NUMBER: 8094

**LA-H-221**