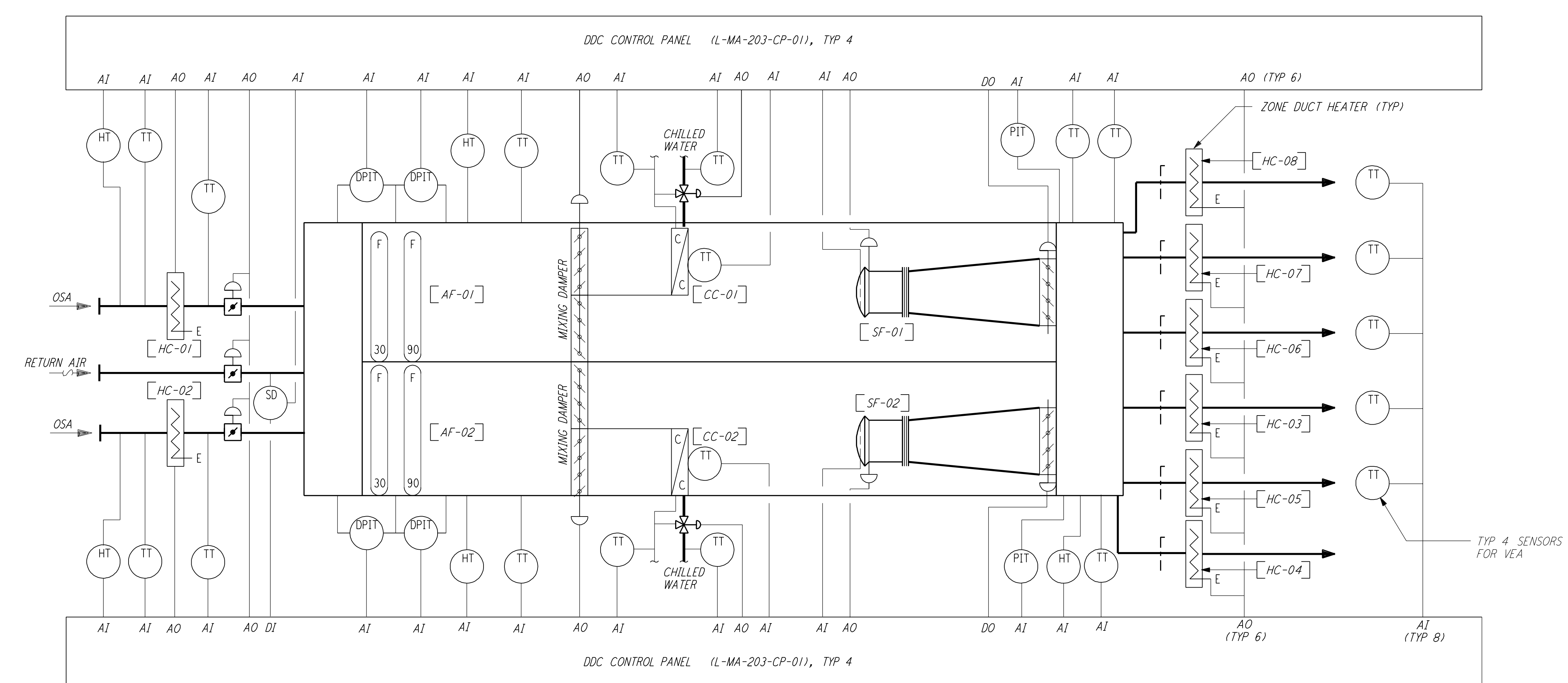
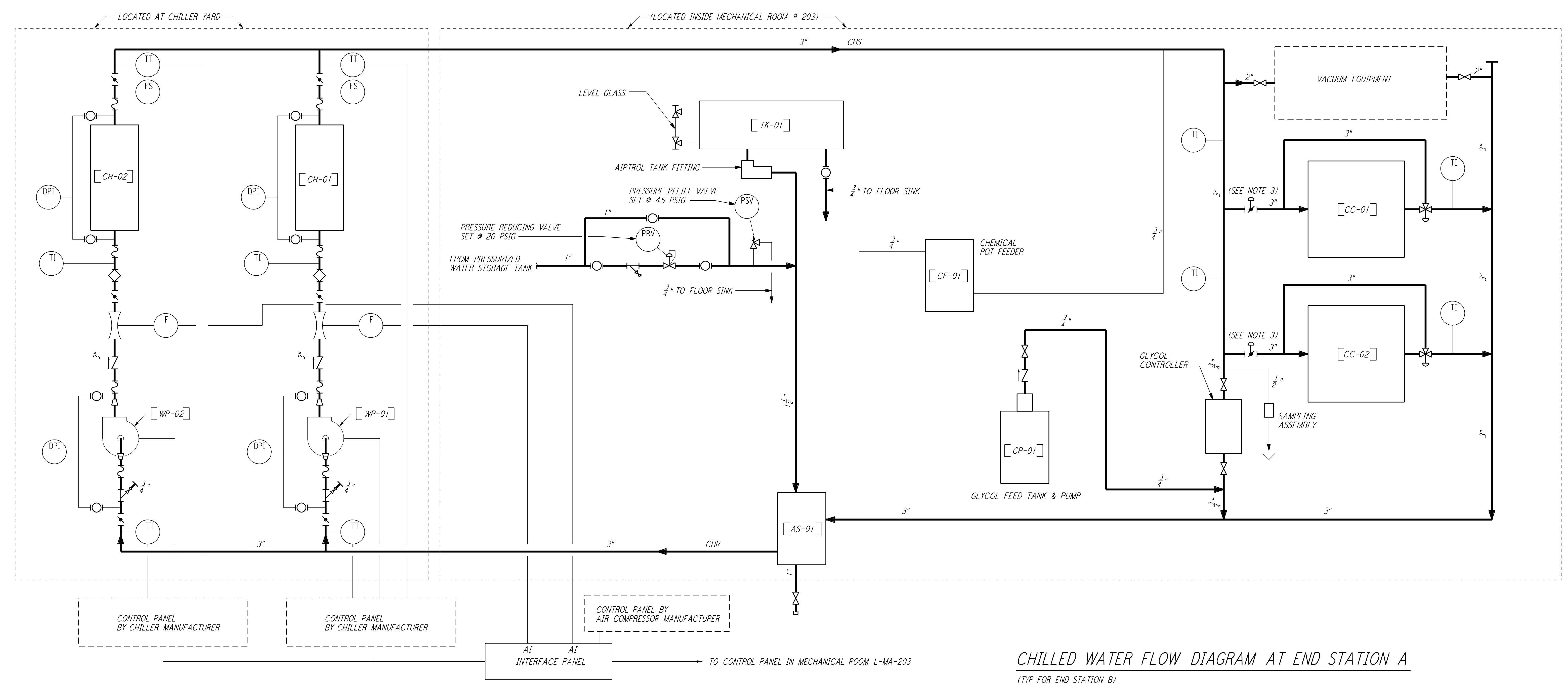


This document and the design it covers are the property of PARSONS. They are loaned only with the borrower's expressed written agreement that they will not be reproduced, copied, loaned, exhibited, or used in any other way, except by written consent from PARSONS to the borrower.



- NOTES:**
- FOR LEGEND, ABBREVIATIONS AND GENERAL NOTES SEE SHEETS LA-H-001 AND LA-H-002.
  - FOR PIPING DETAILS OF COOLING COILS, WATER CHILLERS, PUMPS AND CHEMICAL POT FEEDERS SEE SHEETS LA-H-411 AND LA-H-412.
  - PNEUMATIC VALVES ARE INSTALLED IN ARM 1 ONLY, BUT THE CONTROL SYSTEM IS NOT FUNCTIONAL, AS DIRECTED UNDER FWD 103R2. ARM 2 END STATION "A" HAS MANUAL VALVES INSTALLED.



NO.	DATE	BY	CHKD	ENGR	PROJ	DESCRIPTION
1	8-7-98	DJB				ISSUED FOR AS-BUILT

ISSUED FOR CONSTRUCTION		
DRAWN	CLP	11-15-96
CHECKED	MN	10-25-96
ENGINEER	AA	1-23-96
PROJ	TDM	11-15-96

**AS-BUILT DRAWINGS**

**PARSONS**

100 WEST WALNUT STREET  
 PASADENA, CALIFORNIA

**LIGO**

CALIFORNIA INSTITUTE OF TECHNOLOGY  
 MASSACHUSETTS INSTITUTE OF TECHNOLOGY

LIGO-D960988-01-0

LASER INTERFEROMETER  
 GRAVITATIONAL-WAVE OBSERVATORY  
 SITE NO. 2 - LIVINGSTON, LOUISIANA

TITLE	SCALE	CONTRACT NUMBER	PROJECT NUMBER
HVAC END STATION CHILLED WATER & AIR FLOW DIAGRAMS	NONE	PP150969	8094
SHEET NUMBER		REVISIONS	
LA-H-221		1	

Wed Oct 7 14:17:52 1998 en:\laha\ref\33-30aef No.010015.E:3082\04221.PDF

*Note 1, LIGO, 04/07/99 07:59:42 PM*  
LIGO-D960988-01-O