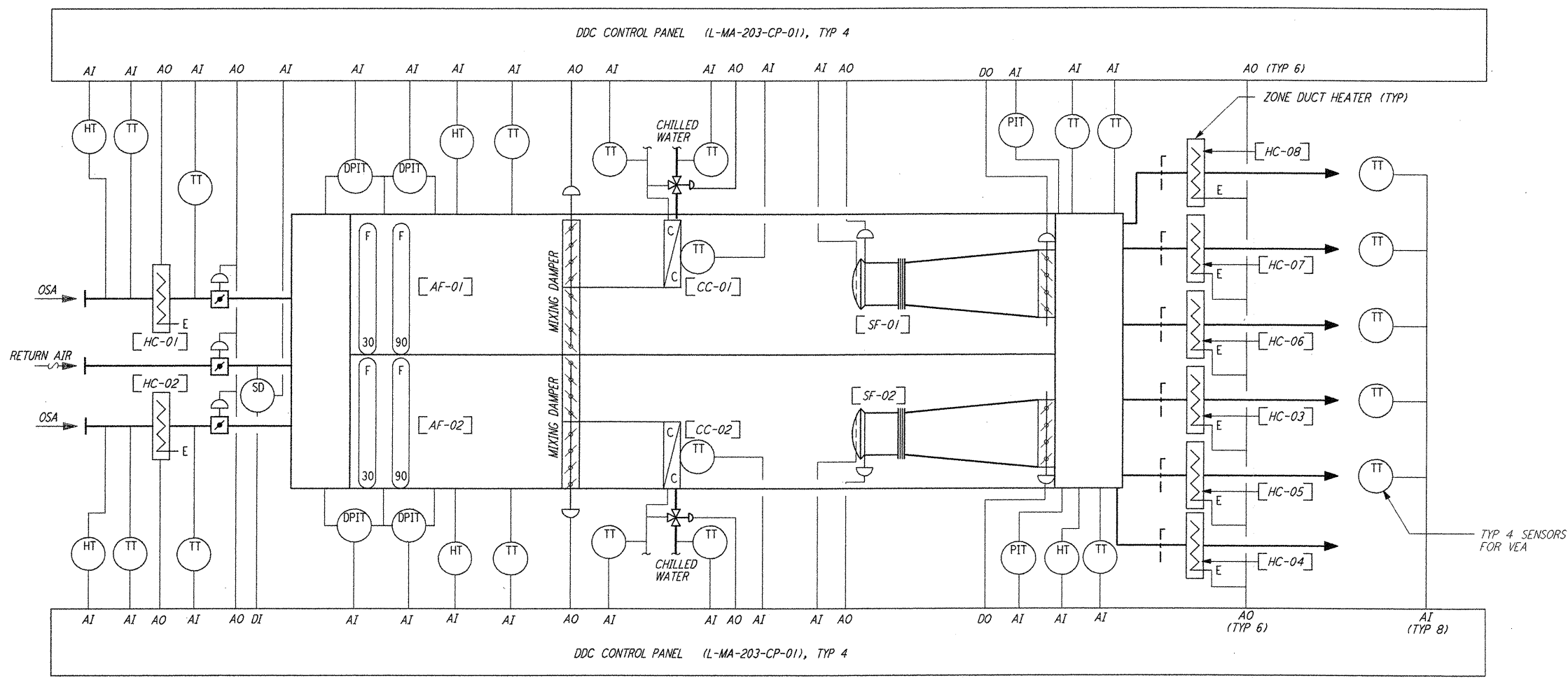
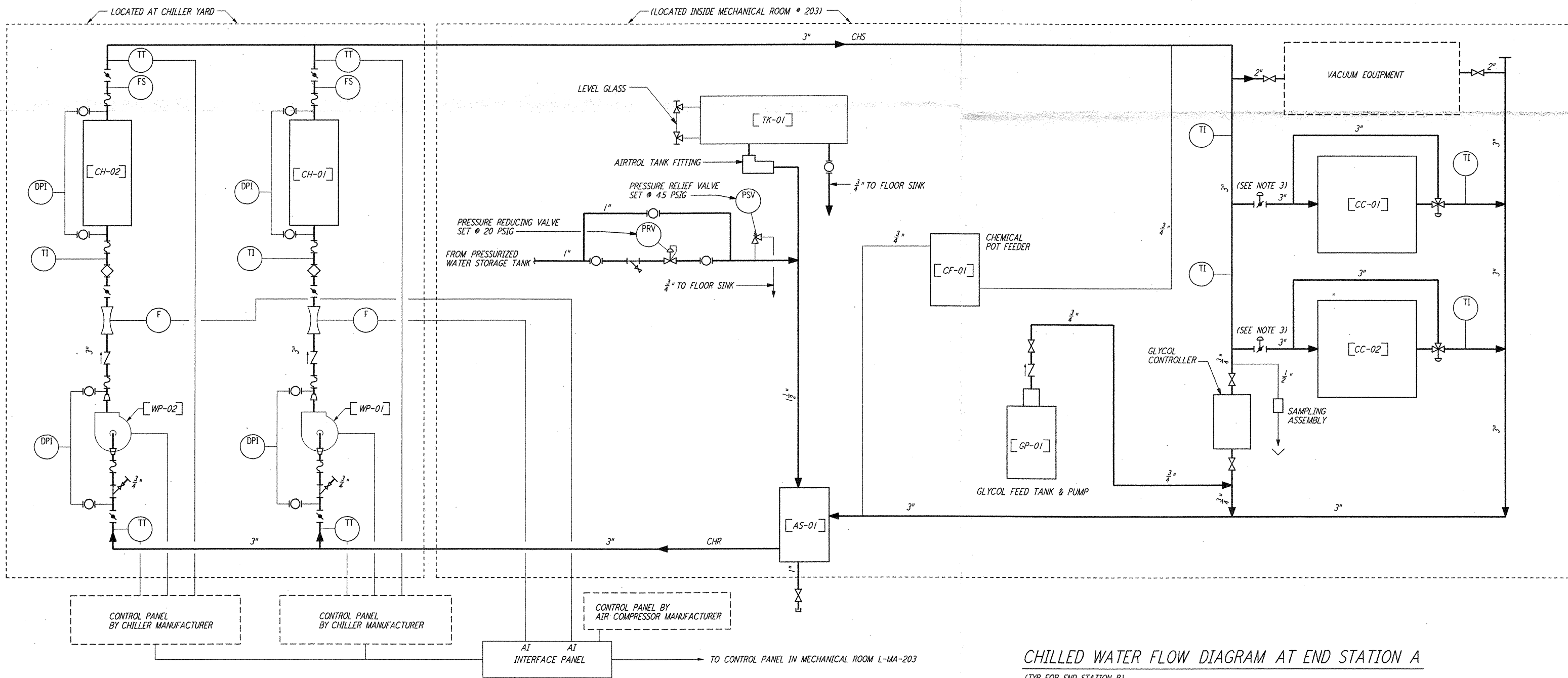


not be reproduced, copied, loaned, exhibited, or used in any other way, except by written consent from PARSONS to the borrower.

This document and the design it covers are the property of PARSONS. They are loaned only with the borrower's expressed written agreement that they will not be reproduced, copied, loaned, exhibited, or used in any other way, except by written consent from PARSONS to the borrower.



**END STATION A CONTROL DIAGRAM**  
(TYP FOR END STATION B)



**CHILLED WATER FLOW DIAGRAM AT END STATION A**  
(TYP FOR END STATION B)

**NOTES:**

1. FOR LEGEND, ABBREVIATIONS AND GENERAL NOTES SEE SHEETS LA-H-001 AND LA-H-002.
2. FOR PIPING DETAILS OF COOLING COILS, WATER CHILLERS, PUMPS AND CHEMICAL POT FEEDERS SEE SHEETS LA-H-411 AND LA-H-412.
3. PNEUMATIC VALVES ARE INSTALLED IN ARM 1 ONLY, BUT THE CONTROLS SYSTEM IS NOT FUNCTIONAL, AS DIRECTED UNDER FWD 103R2. ARM 2 END STATION "A" HAS MANUAL VALVES INSTALLED.

**LIGO-D960988-01-0**

LASER INTERFEROMETER  
GRAVITATIONAL-WAVE OBSERVATORY  
SITE NO.2 - LIVINGSTON, LOUISIANA

TITLE	SCALE	CONTRACT NUMBER	PROJECT NUMBER
HVAC END STATION CHILLED WATER & AIR FLOW DIAGRAMS	NONE	PP150969	8094
SHEET NUMBER		REVISION	
<b>LA-H-221</b>			

**PARSONS**  
100 WEST WALNUT STREET  
PASADENA, CALIFORNIA

**LIGO**  
CALIFORNIA INSTITUTE OF TECHNOLOGY  
MASSACHUSETTS INSTITUTE OF TECHNOLOGY

ISSUED FOR CONSTRUCTION
DRAWN CLP 11-15-96
CHECKED MN 10-25-96
ENGINEER AA 1-23-96
PROJ TDM 11-15-96

**AS-BUILT DRAWINGS**

NO.	DATE	BY	CHKD	ENGR	PROJ	DESCRIPTION
1	8-7-98	DJB	AA	AA	WU	ISSUED FOR AS-BUILT