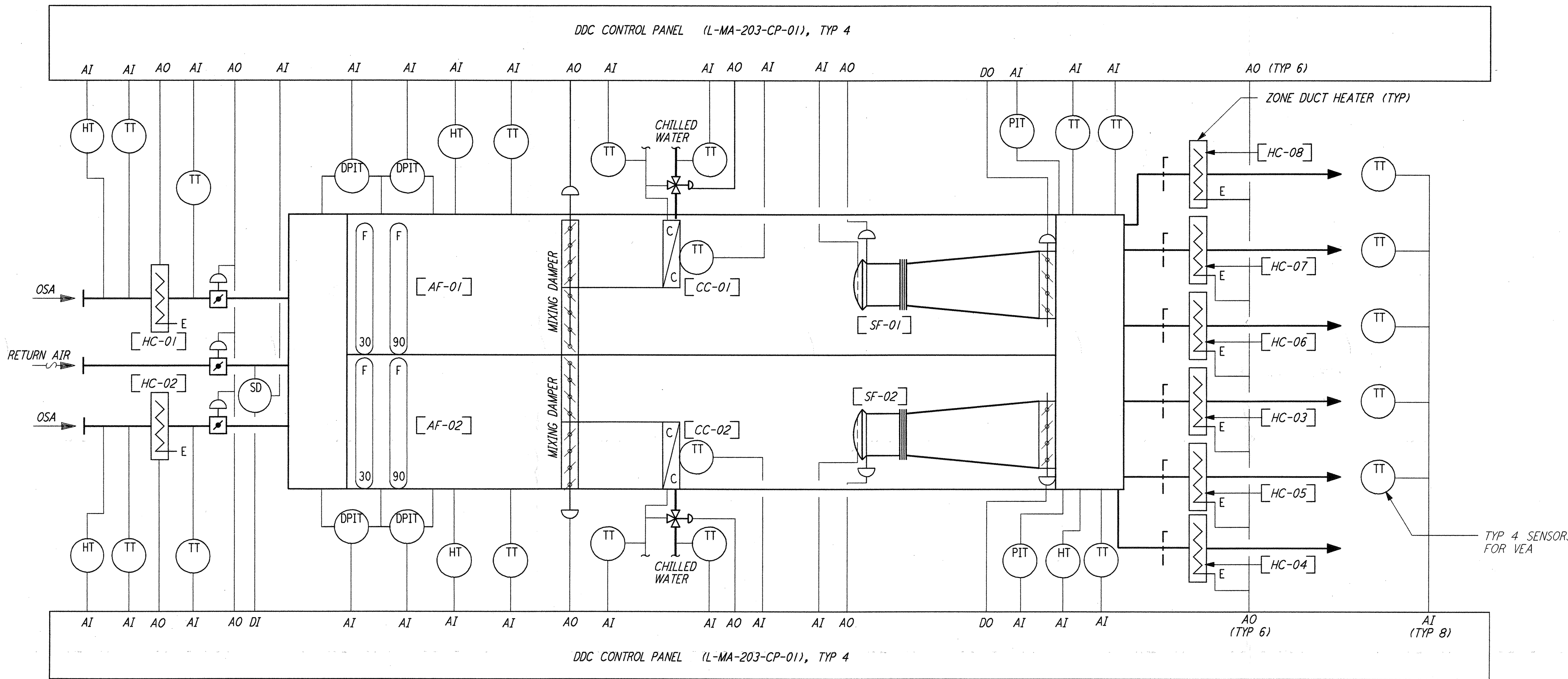
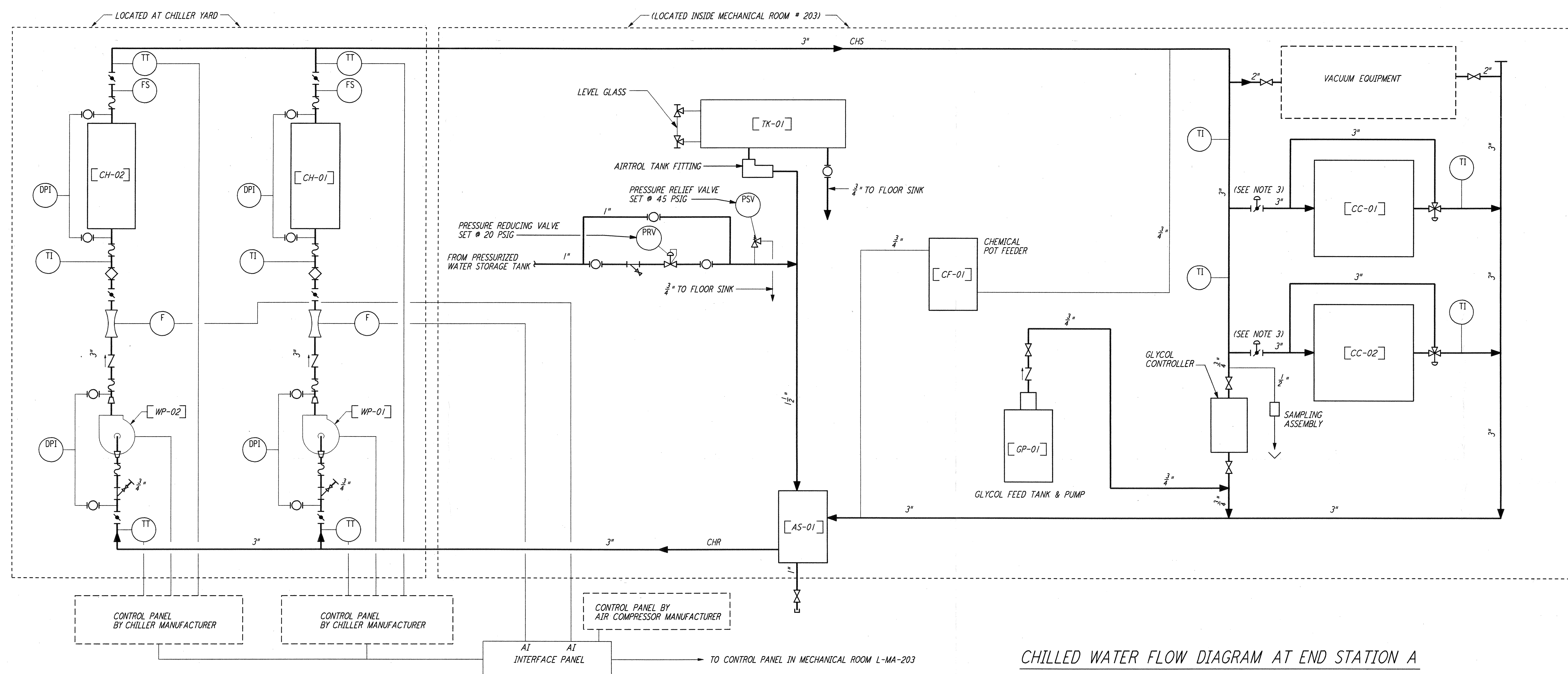


of PARSONS, they are loaned only with the consent of PARSONS, except by written consent from any other party, to the borrower.



**END STATION A CONTROL DIAGRAM**  
 (TYP FOR END STATION B)

- NOTES:**
1. FOR LEGEND, ABBREVIATIONS AND GENERAL NOTES SEE SHEETS LA-H-001 AND LA-H-002.
  2. FOR PIPING DETAILS OF COOLING COILS, WATER CHILLERS, PUMPS AND CHEMICAL POT FEEDERS SEE SHEETS LA-H-411 AND LA-H-412.
  3. PNEUMATIC VALVES ARE INSTALLED IN ARM 1 ONLY, BUT THE CONTROL SYSTEM IS NOT FUNCTIONAL, AS DIRECTED UNDER FWD 103R2. ARM 2 END STATION "A" HAS MANUAL VALVES INSTALLED.



**CHILLED WATER FLOW DIAGRAM AT END STATION A**  
 (TYP FOR END STATION B)

**LIGO-D960988-01-0**

REV	NO.	DATE	BY	CHKD	ENGR	PROJ	DESCRIPTION
1	8-7-98	DJB	AA	AA			ISSUED FOR AS-BUILT

ISSUED FOR CONSTRUCTION			
DRAWN	CLP	11-15-96	
CHECKED	MV	10-25-96	
ENGINEER	AA	1-23-96	
PROJ	TDM	11-15-96	
<b>AS-BUILT DRAWINGS</b>			

**PARSONS**  
 100 WEST WALNUT STREET  
 PASADENA, CALIFORNIA

**LIGO**  
 CALIFORNIA INSTITUTE OF TECHNOLOGY  
 MASSACHUSETTS INSTITUTE OF TECHNOLOGY

LASER INTERFEROMETER GRAVITATIONAL-WAVE OBSERVATORY SITE NO.2 - LIVINGSTON, LOUISIANA			
TITLE	SCALE	CONTRACT NUMBER	PROJECT NUMBER
HVAC END STATION CHILLED WATER & AIR FLOW DIAGRAMS	NONE	PP150969	8094
<b>LA-H-221</b>		REVISIONS	