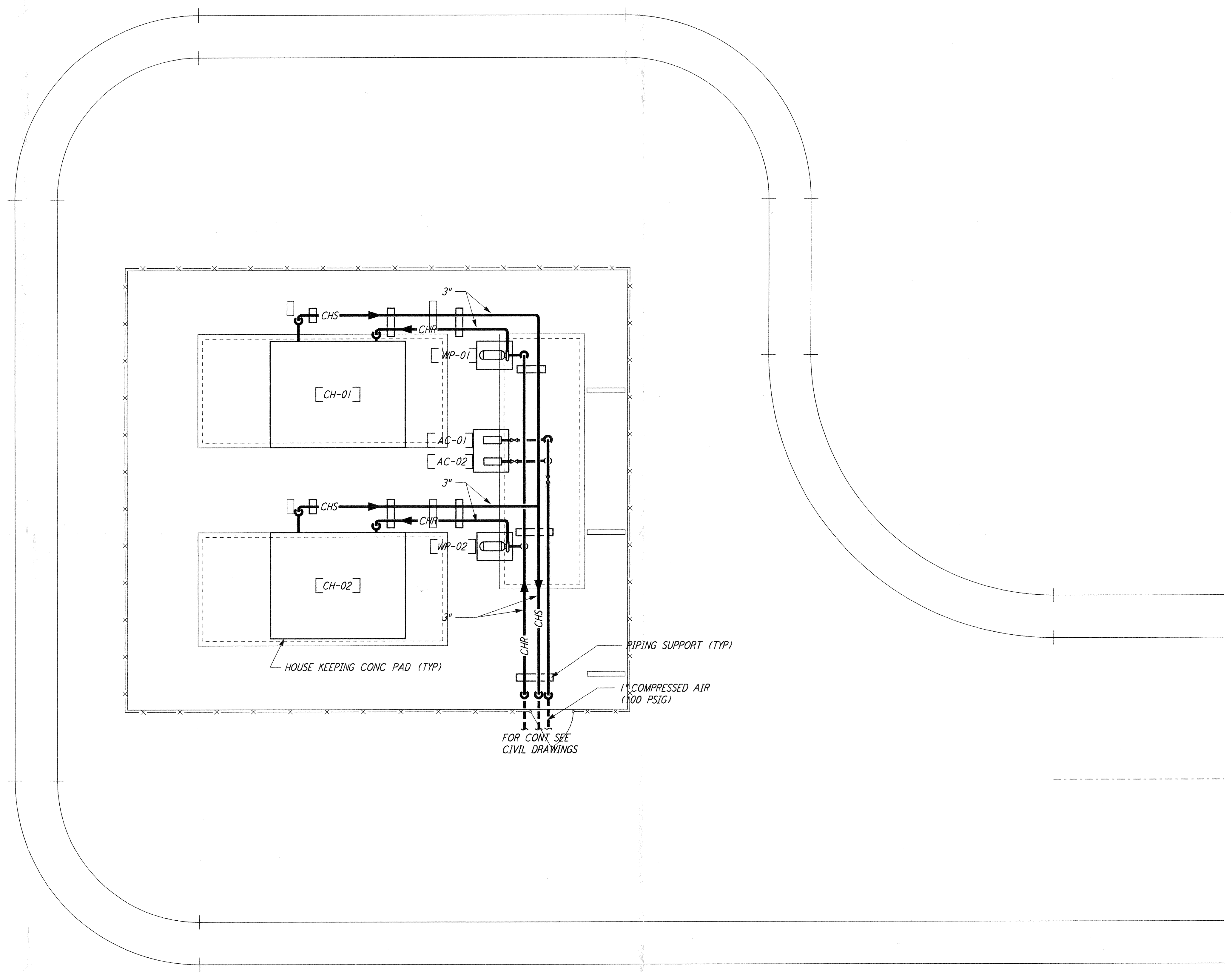
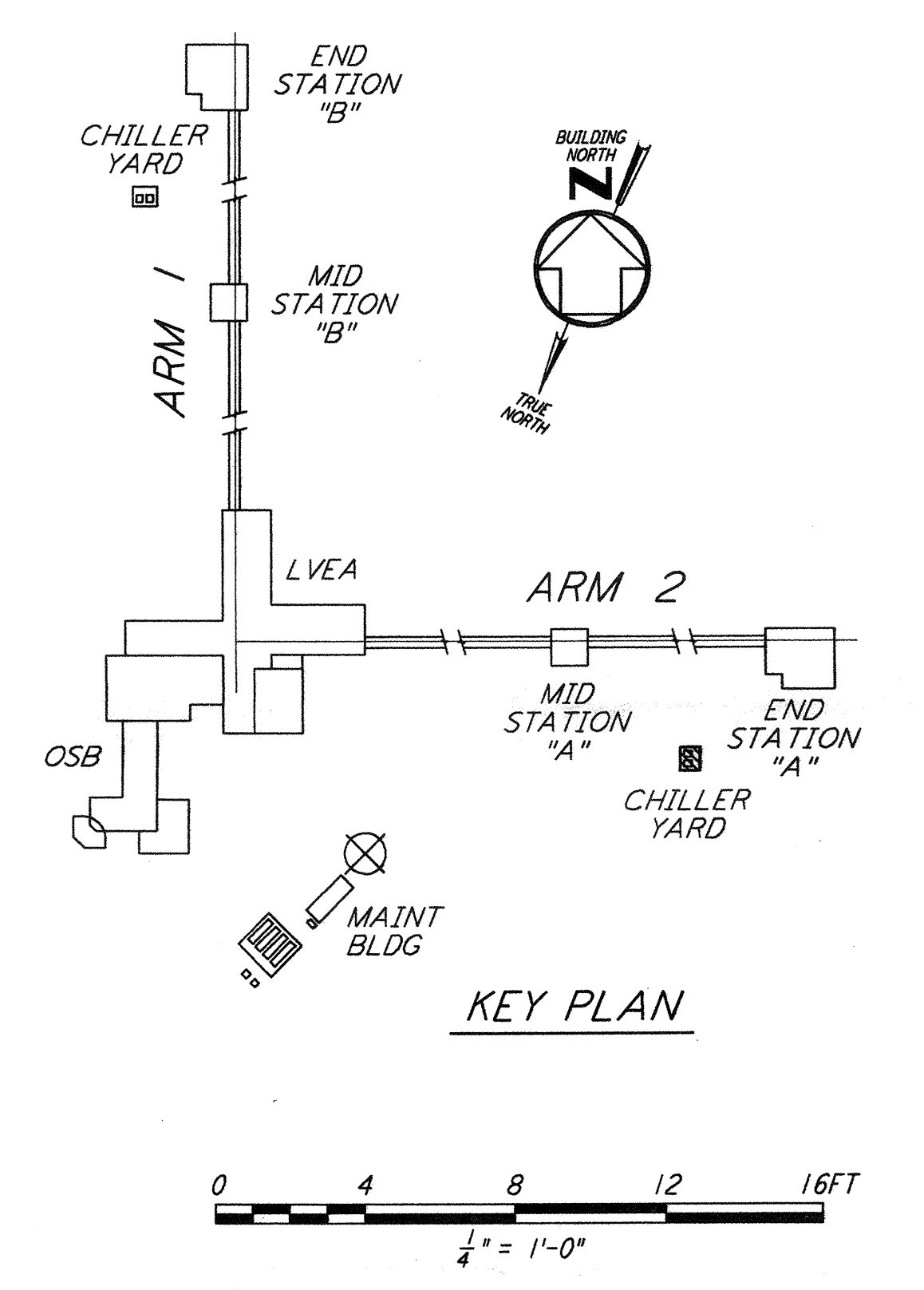


This document and the design it covers are the property of **PARSONS**. They are loaned only with the borrower's expressed written agreement that they will not be reproduced, copied, loaned, exhibited, or used in any other way, except by written consent from **PARSONS** to the borrower.



- NOTES:**
- FOR LEGEND, ABBREVIATIONS AND GENERAL NOTES SEE SHEET LA-H-001 AND LA-H-002.
 - MAINTAIN 6'-8" CLEAR HEIGHT UNDER PIPES. FOR PIPE SUPPORT DETAILS SEE STRUCTURAL DRAWING WA-5-407.
 - PROVIDE FLOOR MOUNTED ELBOW SUPPORT AT THE PUMP SUCTION. CONTRACTOR MAY USE SUCTION DIFFUSER/STRAINER.
 - REFER TO SPECIFICATIONS FOR PIPE SUPPORT REQUIREMENTS.
 - SUPPORT PIPING TO ELIMINATE ANY LOADS TRANSMITTED FROM PIPING TO PUMPS AND CHILLERS.
 - FOR PIPING FLOW DIAGRAM SEE SHEET LA-H-221.
 - FOR CHILLERS AND PUMPS PIPING DETAILS SEE SHEETS LA-H-411 AND LA-H-412.
 - FOR EXACT LOCATION OF THE CHILLERS AND PUMPS SEE CIVIL DRAWINGS.
 - PROVIDE FLEX CONNECTIONS @ AIR COMPRESSOR DISCHARGE.

END STATION "A" CHILLER YARD PLAN
 1/4" = 1'-0"



LIGO-D960984-02-O

NO.	DATE	BY	CHKD	ENGR	PROJ	DESCRIPTION
2	5-21-99	AO	AA	AA	MDW	ISSUED AS REVISED AS-BUILT
1	8-7-98	DJB	AA	AA	MDW	ISSUED FOR AS-BUILT

ISSUED FOR CONSTRUCTION
 DRAWN: CLP 11-15-96
 CHECKED: MN 10-25-96
 ENGINEER: AA 1-23-96
 PROJ: TDM 11-15-96

AS-BUILT DRAWINGS

PARSONS
 100 WEST WALNUT STREET
 PASADENA, CALIFORNIA

LIGO
 CALIFORNIA INSTITUTE OF TECHNOLOGY
 MASSACHUSETTS INSTITUTE OF TECHNOLOGY

LASER INTERFEROMETER
 GRAVITATIONAL-WAVE OBSERVATORY
 SITE NO. 2 - LIVINGSTON, LOUISIANA

**HVAC
 END STATION "A"
 CHILLER YARD PLAN**

AS NOTED PP150969 8094
LA-H-213