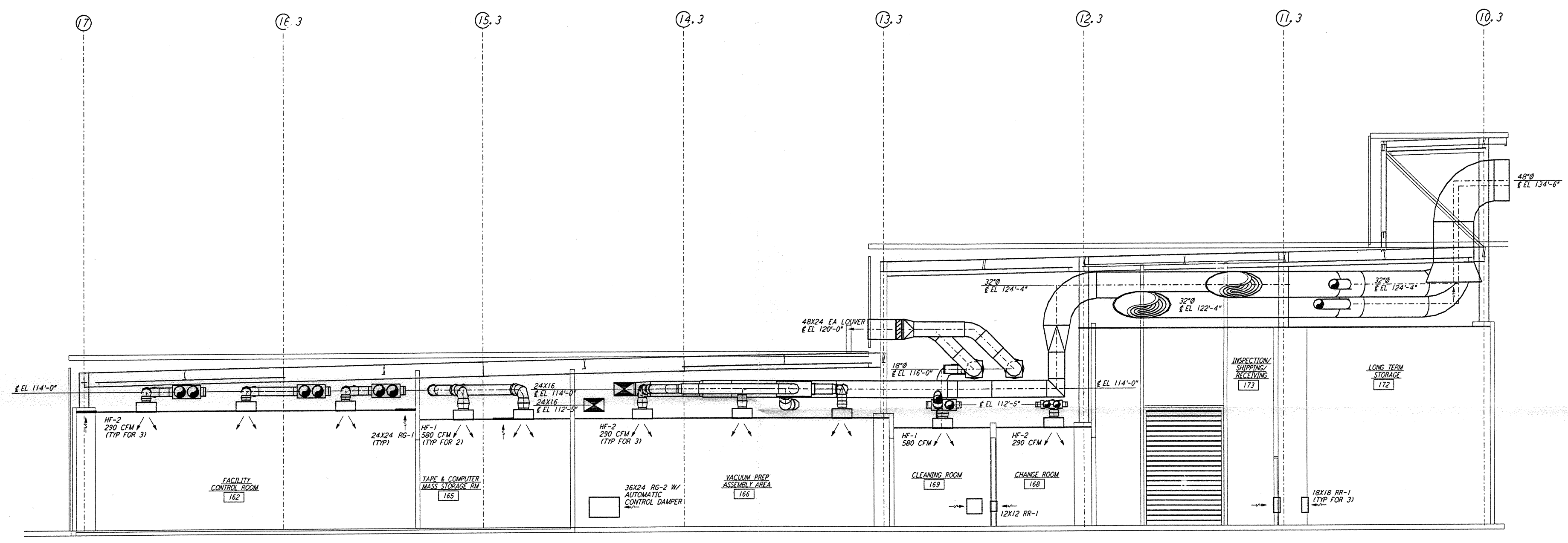
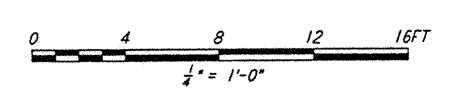


NOTES:
 1. FOR LEGEND, ABBREVIATIONS AND GENERAL NOTES SEE SHEETS LA-H-001 AND LA-H-002.
 2. SEE FLOOR PLAN NOTES FOR DUCT INSULATION.



SECTION D
 REF LA-H-153 LA-H-113
 1/4" = 1'-0"



This document and the design it covers are the property of PARSONS. They are loaned only with the borrower's expressed written agreement that they will not be reproduced, copied, loaned, exhibited, or used in any other way, except by written consent from PARSONS to the borrower.

DRAWING NO.	DESCRIPTION	NO.	DATE	BY	CHKD	ENGR	PROJ	DESCRIPTION

ISSUED FOR CONSTRUCTION	CLP	11-15-96
DRAWN		
CHECKED		
ENGINEER		
PROJ		



PARSONS
 100 WEST WALNUT STREET
 PASADENA, CALIFORNIA

LIGO
 CALIFORNIA INSTITUTE OF TECHNOLOGY
 MASSACHUSETTS INSTITUTE OF TECHNOLOGY

LASER INTERFEROMETER
 GRAVITATIONAL-WAVE OBSERVATORY
 SITE NO. 2 - LIVINGSTON, LOUISIANA

HVAC
 CORNER STATION
 SECTIONS SHEET 3

SCALE AS NOTED
 CONTRACT NUMBER PPI50969
 PROJECT NUMBER 8094
LA-H-153