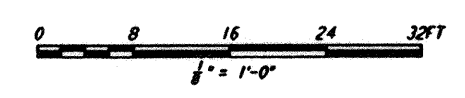
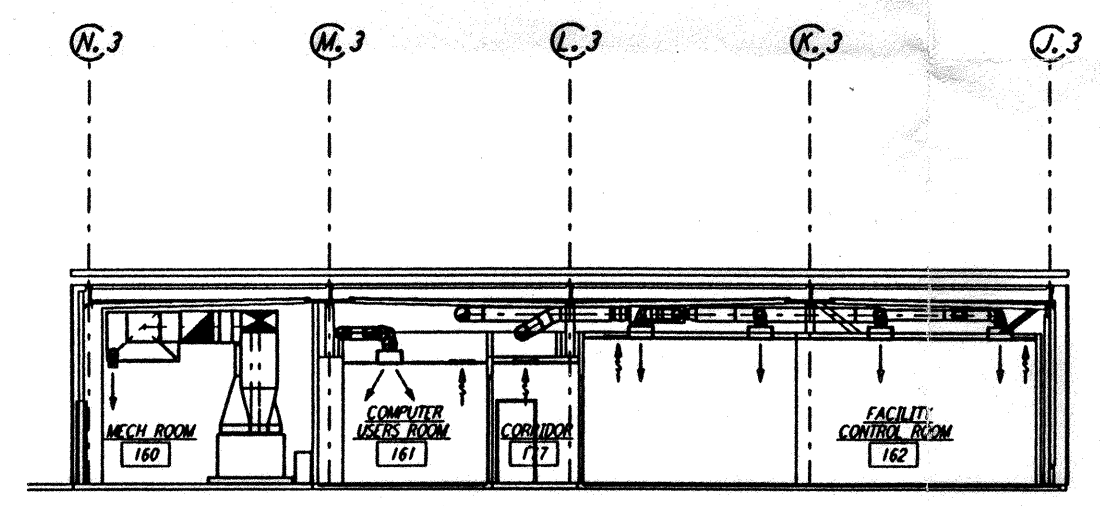
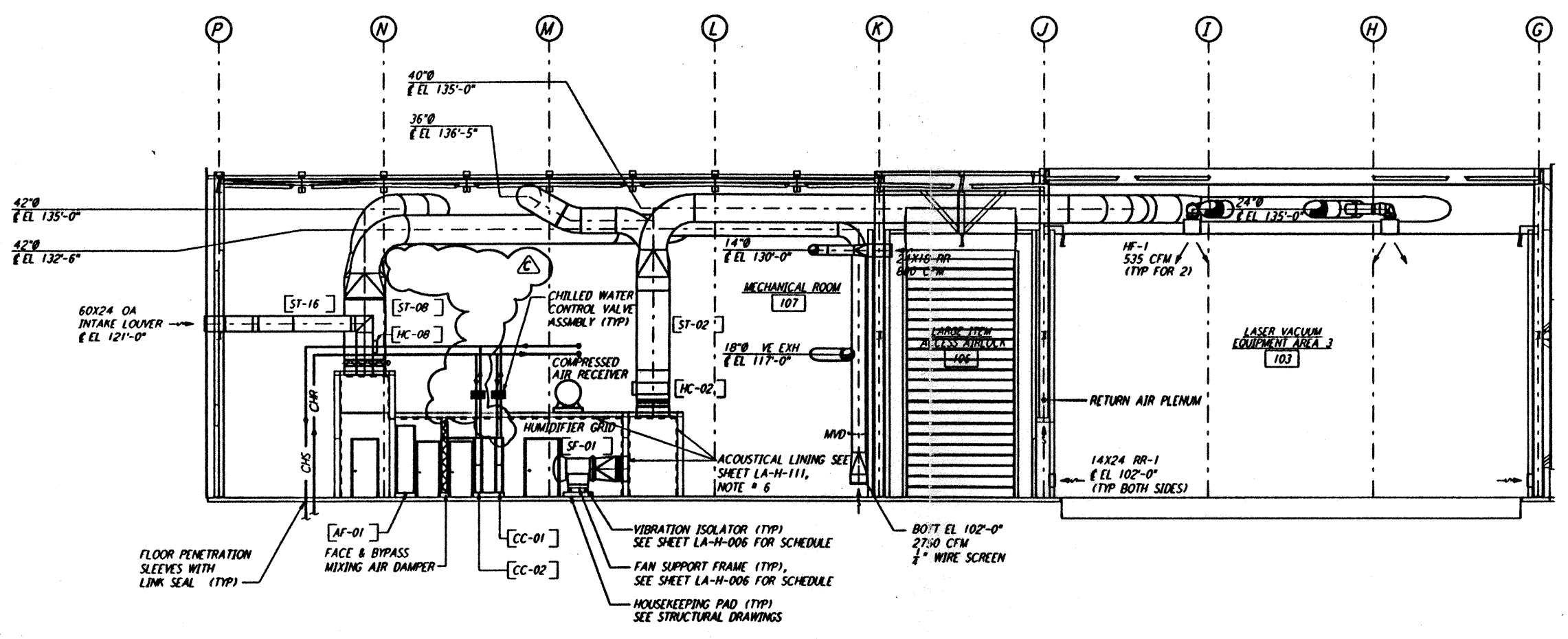


- NOTES:**
1. FOR LEGEND, ABBREVIATIONS AND GENERAL NOTES SEE SHEET LA-H-001 AND LA-H-002.
 2. SEE SHEET LA-H-151 FOR APPLICABLE NOTES.
 3. PERFORATED DUCT LINER INSIDE THE SUPPLY AIR PLENUM OF AH-01 AND AH-02 WILL BE CORRUGATED TYPE.



not be reproduced, copied, loaned, exhibited, or used in any other way, except by written consent from PARSONS to the borrower.

This document and the design it covers are the property of PARSONS. They are loaned only with the borrower's expressed written agreement that they will

NO.	DATE	BY	CHKD	ENGR	PROJ	DESCRIPTION
C	9-10-96	CLP	AA	AA	AA	BID ADDENDUM #2
B	7-24-96	CLP	ME	AA	TDM	ISSUED FOR BID
A	6-14-96	CLP	ME	AA	TDM	FINAL DESIGN REVIEW

DRAWN	CLP
CHECKED	
ENGINEER	
PROJ	

PARSONS
 100 WEST WALNUT STREET
 PASADENA, CALIFORNIA

LIGO
 CALIFORNIA INSTITUTE OF TECHNOLOGY
 MASSACHUSETTS INSTITUTE OF TECHNOLOGY

LASER INTERFEROMETER
 GRAVITATIONAL-WAVE OBSERVATORY
 SITE NO. 2 - LIVINGSTON, LOUISIANA

HVAC
 CORNER STATION
 SECTIONS SHEET 2

AS NOTED PP150969 8094
LA-H-152

Tue Sep 10 10:38:27 1996 s3-v18b2 J:\PLOTS\QUEUES\18B2\MU152B.PR