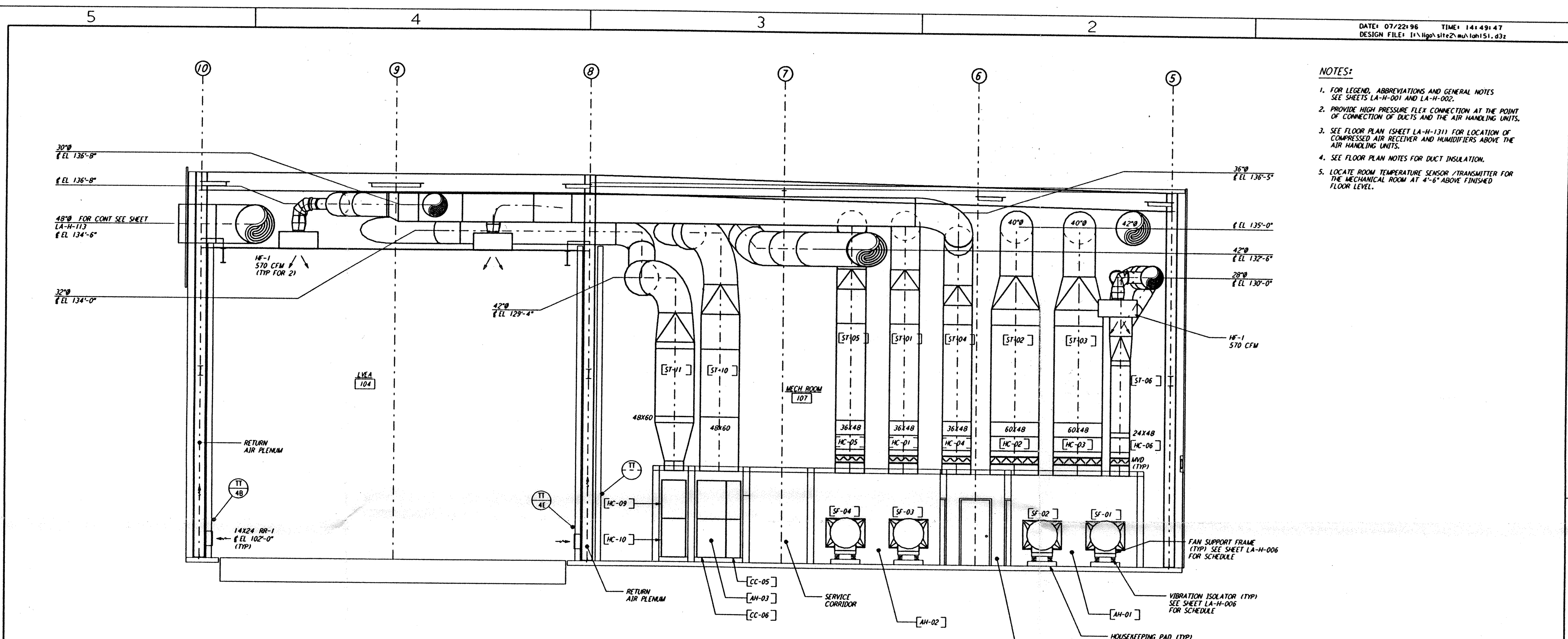
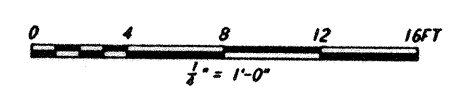


- NOTES:**
1. FOR LEGEND, ABBREVIATIONS AND GENERAL NOTES SEE SHEETS LA-H-001 AND LA-H-002.
 2. PROVIDE HIGH PRESSURE FLEX CONNECTION AT THE POINT OF CONNECTION OF DUCTS AND THE AIR HANDLING UNITS.
 3. SEE FLOOR PLAN (SHEET LA-H-131) FOR LOCATION OF COMPRESSED AIR RECEIVER AND HUMIDIFIERS ABOVE THE AIR HANDLING UNITS.
 4. SEE FLOOR PLAN NOTES FOR DUCT INSULATION.
 5. LOCATE ROOM TEMPERATURE SENSOR / TRANSMITTER FOR THE MECHANICAL ROOM AT 4'-6" ABOVE FINISHED FLOOR LEVEL.

This document and the design it covers are the property of PARSONS. They are loaned only with the borrower's expressed written agreement that they will not be reproduced, copied, loaned, exhibited, or used in any other way, except by written consent from PARSONS to the borrower.



SECTION A
 REF LA-H-151 LA-H-111
 1/4" = 1'-0"



NO.	DATE	BY	CHKD	ENGR	PROJ	DESCRIPTION
B	7-24-96	CLP	ME	AA	TDM	ISSUED FOR BID
A	6-14-96	CLP	ME	AA	TDM	FINAL DESIGN REVIEW

DRAWN	CLP
CHECKED	
ENGINEER	
PROJ	

PARSONS
 100 WEST WALNUT STREET
 PASADENA, CALIFORNIA

LIGO
 CALIFORNIA INSTITUTE OF TECHNOLOGY
 MASSACHUSETTS INSTITUTE OF TECHNOLOGY

LASER INTERFEROMETER
 GRAVITATIONAL-WAVE OBSERVATORY
 SITE NO. 2 - LIVINGSTON, LOUISIANA

TITLE	AS NOTED	CONTRACT NUMBER	PROJECT NUMBER
HVAC CORNER STATION SECTIONS SHEET 1	PP150969	8094	

LA-H-151

Mon Jul 22 14:48:48 1996 s3-v18b2 J:\PLOTS\QUEUES\18B2\MU151A.PRF