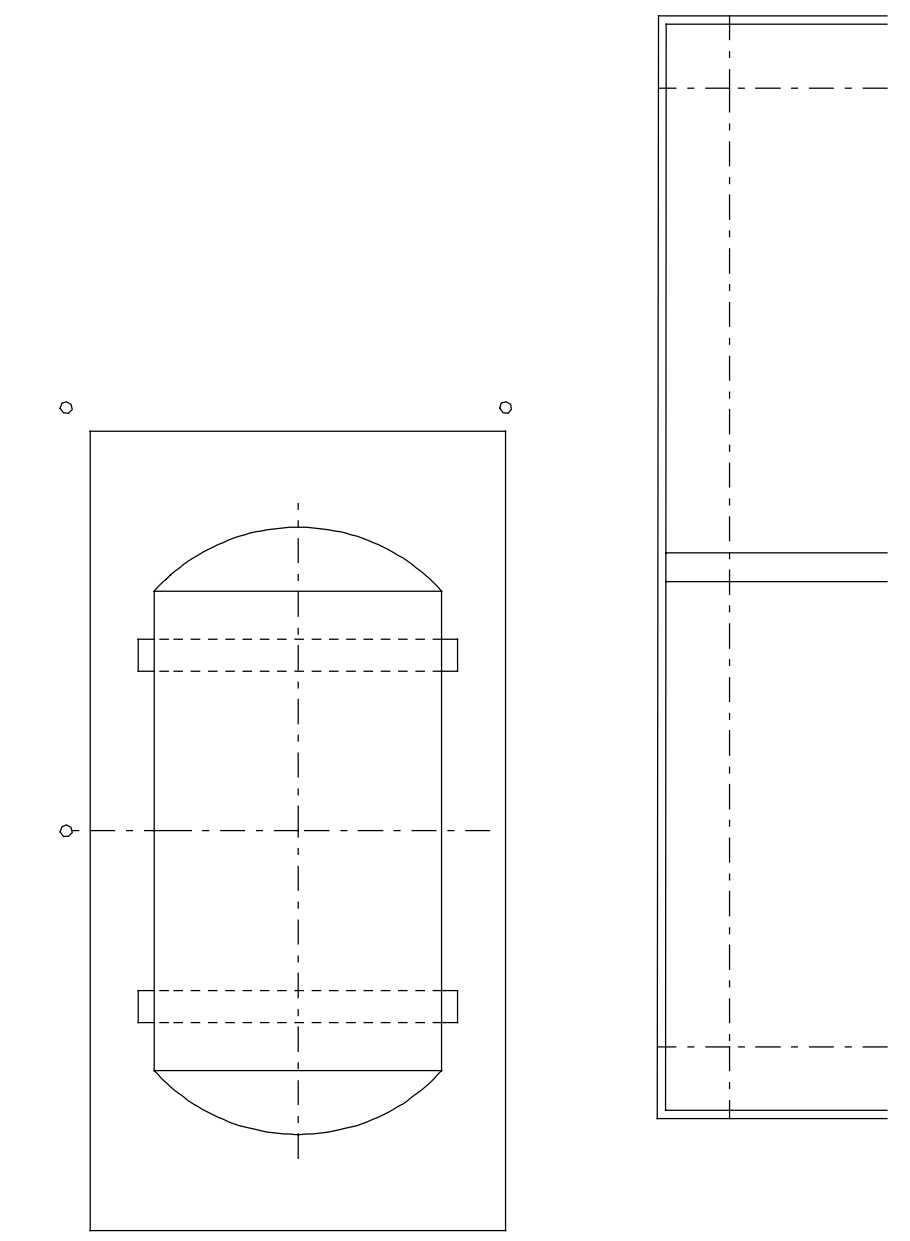
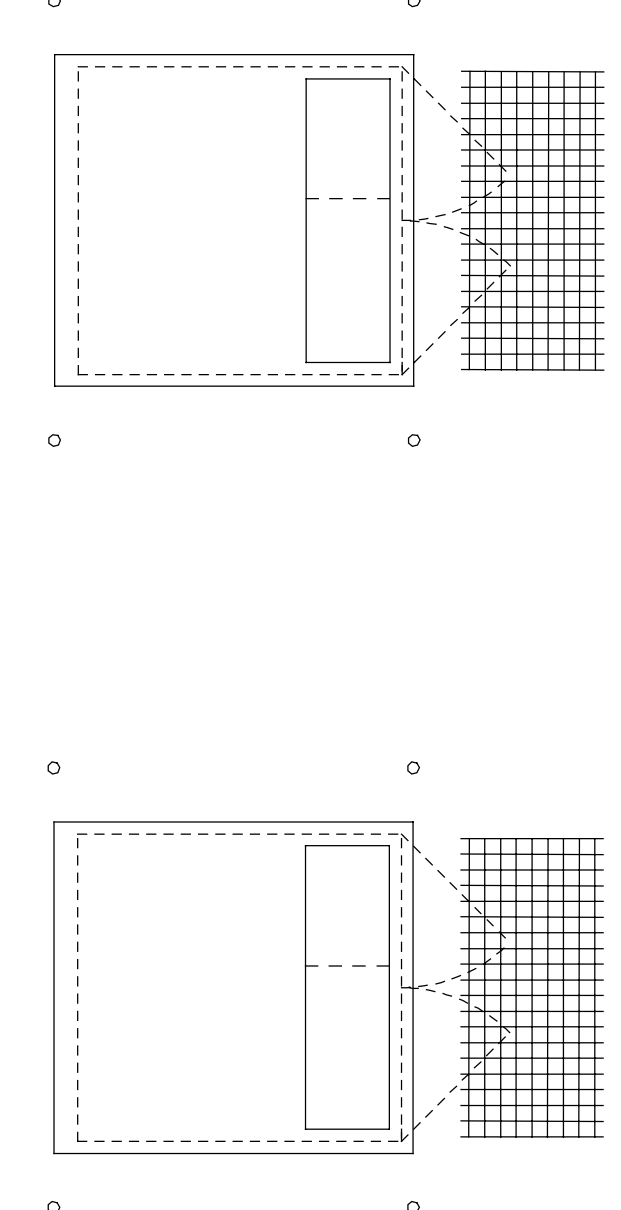
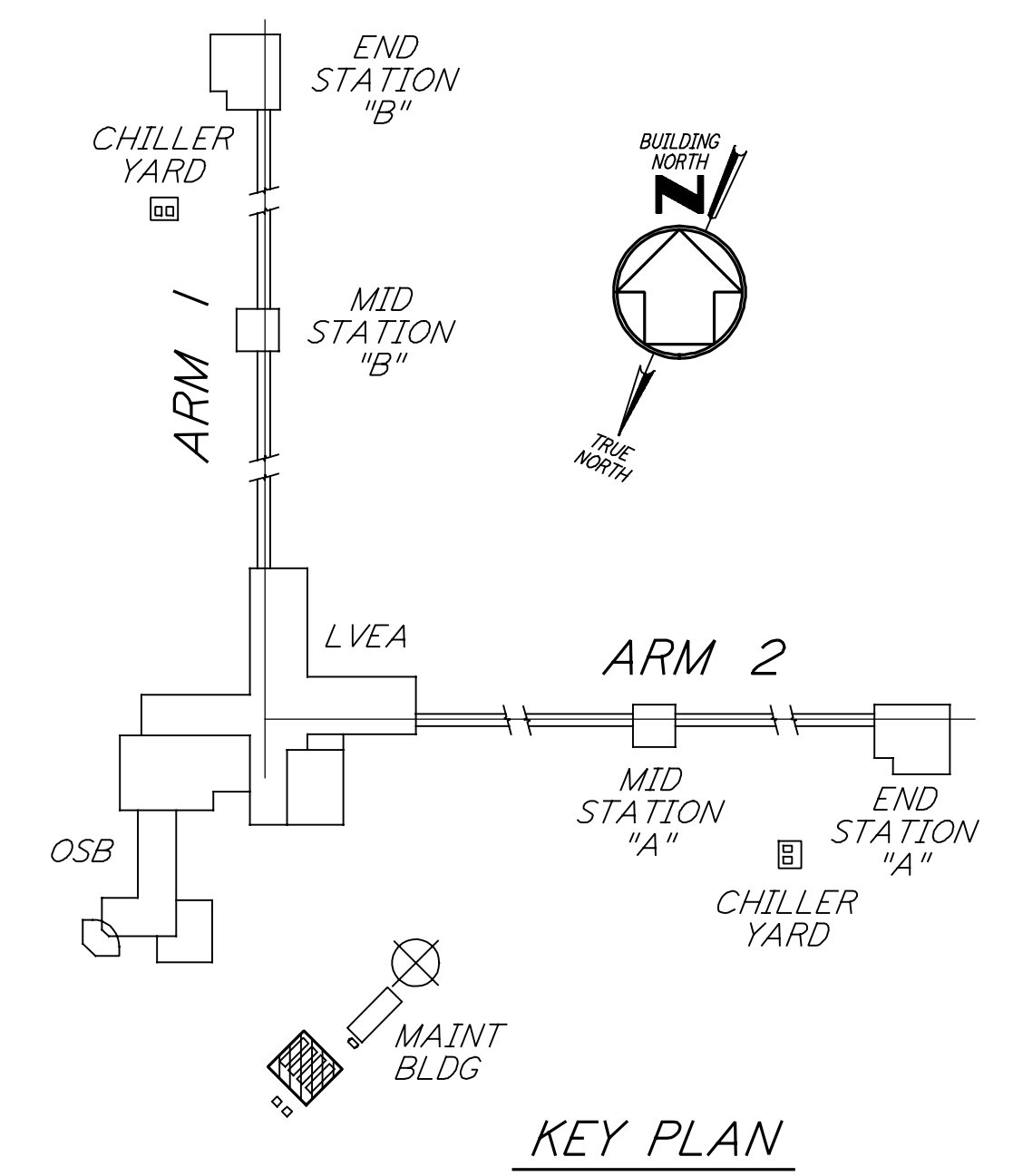


NOTES:

1. FOR LEGEND, ABBREVIATIONS AND GENERAL NOTES SEE SHEET LA-H-001 AND LA-H-002.
2. MAINTAIN MINIMUM 6'-8" CLEAR HEIGHT UNDER PIPES, FOR PIPE SUPPORT DETAILS SEE STRUCTURAL DRAWING WA-S-407.
3. PROVIDE FLOOR MOUNTED ELBOW SUPPORT AT THE PUMP SUCTION. CONTRACTOR MAY USE SUCTION DIFFUSER/STRAINER.
4. REFER TO SPECIFICATIONS FOR PIPE SUPPORT REQUIREMENTS.
5. SUPPORT PIPING TO ELIMINATE ANY LOADS TRANSMITTED FROM PIPING TO PUMPS AND CHILLERS.
6. FOR PIPING FLOW DIAGRAM SEE SHEET LA-H-121.
7. FOR VALVES AND CONTROL COMPONENTS SEE SHEET LA-H-121.
8. PROVIDE FLEXIBLE CONNECTOR ON THE COMPRESSED AIR DISCHARGE.
9. FOR CHILLERS AND PUMPS PIPING DETAILS SEE SHEETS LA-H-411 AND LA-H-412.
10. FOR EXACT LOCATION OF THE CHILLERS AND PUMPS SEE CIVIL DRAWINGS.



CORNER STATION CHILLER YARD PLAN
 1/4" = 1'-0"



KEY PLAN
 1/4" = 1'-0"

LIGO-D960971-02-0

| NO. | DATE | BY | CHKD | ENGR | PROJ | DESCRIPTION |
|-----|---------|-----|------|------|------|----------------------------|
| 2 | 5-21-99 | AO | | | | ISSUED AS REVISED AS-BUILT |
| 1 | 8-7-98 | DJB | AA | AA | MDW | ISSUED FOR AS-BUILT |

| | | |
|-------------------------|-----|----------|
| ISSUED FOR CONSTRUCTION | | |
| DRAWN | CLP | 11-15-96 |
| CHECKED | MN | 10-25-96 |
| ENGINEER | AA | 1-23-96 |
| PROJ | TDM | 11-15-96 |

AS-BUILT DRAWINGS

PARSONS
 100 WEST WALNUT STREET
 PASADENA, CALIFORNIA

LIGO
 CALIFORNIA INSTITUTE OF TECHNOLOGY
 MASSACHUSETTS INSTITUTE OF TECHNOLOGY

LASER INTERFEROMETER
 GRAVITATIONAL-WAVE OBSERVATORY
 SITE NO.2 - LIVINGSTON, LOUISIANA

HVAC CORNER STATION CHILLERS YARD FLOOR PLAN

AS NOTED PPI 50969 8094

LA-H-115

This document and the design it covers are the property of PARSONS. They are loaned only with the borrower's expressed written agreement that they will not be reproduced, copied, loaned, exhibited, or used in any other way, except by written consent from PARSONS to the borrower.