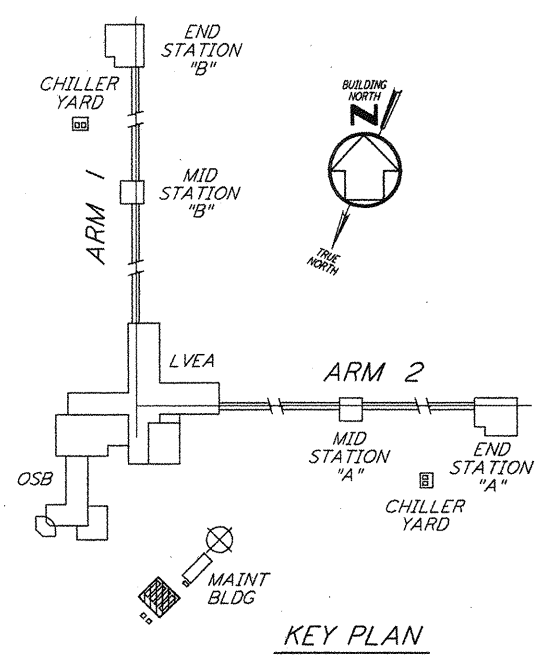
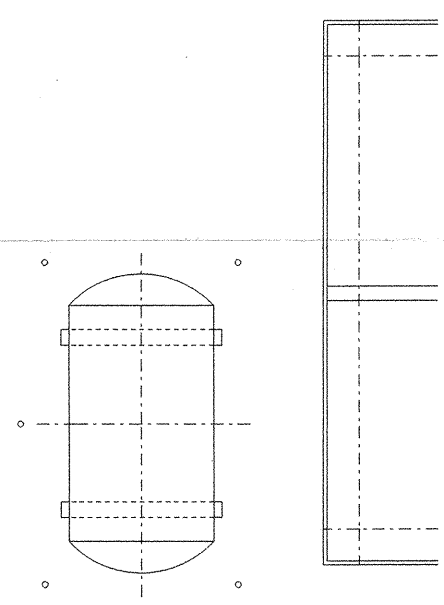
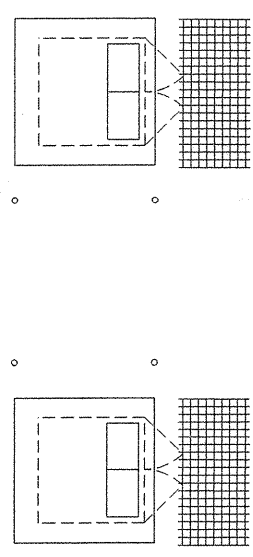


CORNER STATION CHILLER YARD PLAN
 1/4" = 1'-0"

NOTES:

1. FOR LEGEND, ABBREVIATIONS AND GENERAL NOTES SEE SHEET LA-H-001 AND LA-H-002.
2. MAINTAIN MINIMUM 6'-8" CLEAR HEIGHT UNDER PIPES. FOR PIPE SUPPORT DETAILS SEE STRUCTURAL DRAWING WA-S-407.
3. PROVIDE FLOOR MOUNTED ELBOW SUPPORT AT THE PUMP SUCTION. CONTRACTOR MAY USE SUCTION DIFFUSER/STRAINER.
4. REFER TO SPECIFICATIONS FOR PIPE SUPPORT REQUIREMENTS.
5. SUPPORT PIPING TO ELIMINATE ANY LOADS TRANSMITTED FROM PIPING TO PUMPS AND CHILLERS.
6. FOR PIPING FLOW DIAGRAM SEE SHEET LA-H-121.
7. FOR VALVES AND CONTROL COMPONENTS SEE SHEET LA-H-121.
8. PROVIDE FLEXIBLE CONNECTOR ON THE COMPRESSED AIR DISCHARGE.
9. FOR CHILLERS AND PUMPS PIPING DETAILS SEE SHEETS LA-H-411 AND LA-H-412.
10. FOR EXACT LOCATION OF THE CHILLERS AND PUMPS SEE CIVIL DRAWINGS.

This document and the design it covers are the property of PARSONS. They are loaned only with the borrower's expressed written agreement that they will not be reproduced, copied, loaned, exhibited, or used in any other way, except by written consent from PARSONS to the borrower.



KEY PLAN
 1/4" = 1'-0"

NO.	DATE	BY	CHKD	ENGR	PROJ	DESCRIPTION
1	8-7-98	DJB	AA	AA		ISSUED FOR AS-BUILT

ISSUED FOR CONSTRUCTION
 DRAWN CLP 11-15-96
 CHECKED MN 10-25-96
 ENGINEER AA 1-23-96
 PROJ TDM 11-15-96
AS-BUILT DRAWINGS

PARSONS
 100 WEST WALNUT STREET
 PASADENA, CALIFORNIA

LIGO
 CALIFORNIA INSTITUTE OF TECHNOLOGY
 MASSACHUSETTS INSTITUTE OF TECHNOLOGY

LIGO-D960971-01-0
 LASER INTERFEROMETER
 GRAVITATIONAL-WAVE OBSERVATORY
 SITE NO.2 - LIVINGSTON, LOUISIANA
 TITLE HVAC CORNER STATION CHILLERS YARD FLOOR PLAN
 SCALE AS NOTED
 CONTRACT NUMBER PP150969
 PROJECT NUMBER 8094
LA-H-115