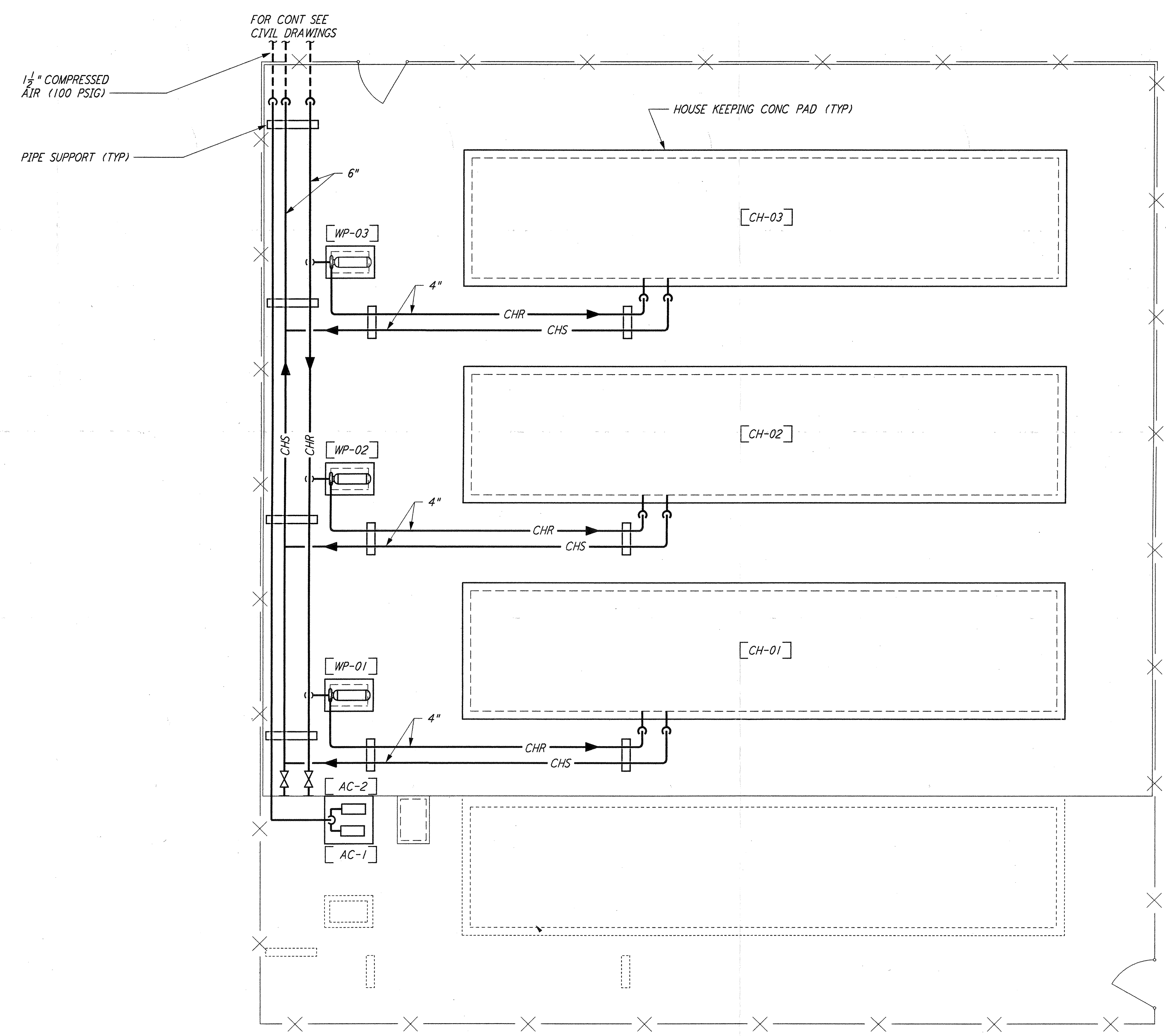
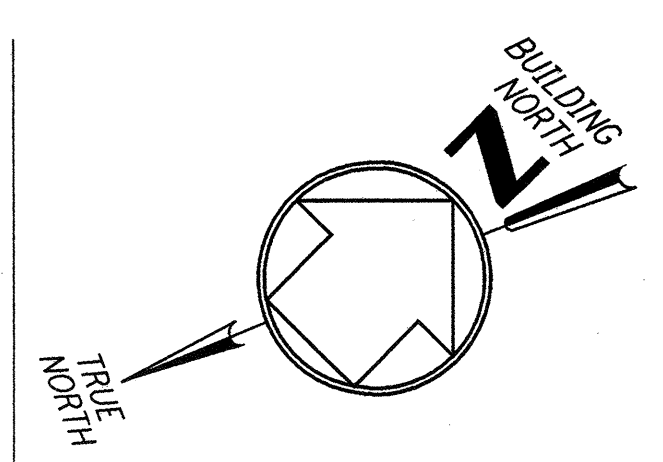
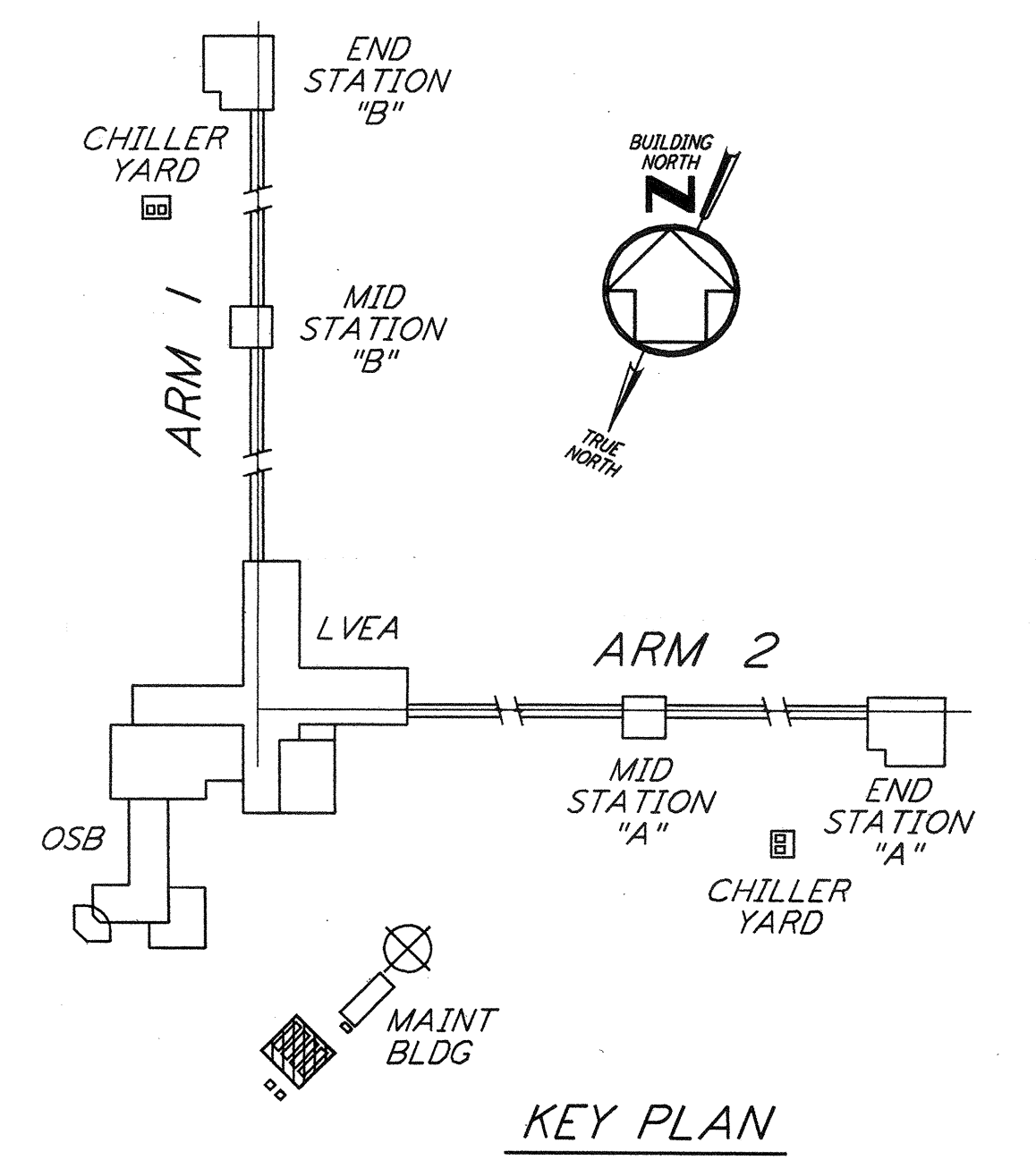
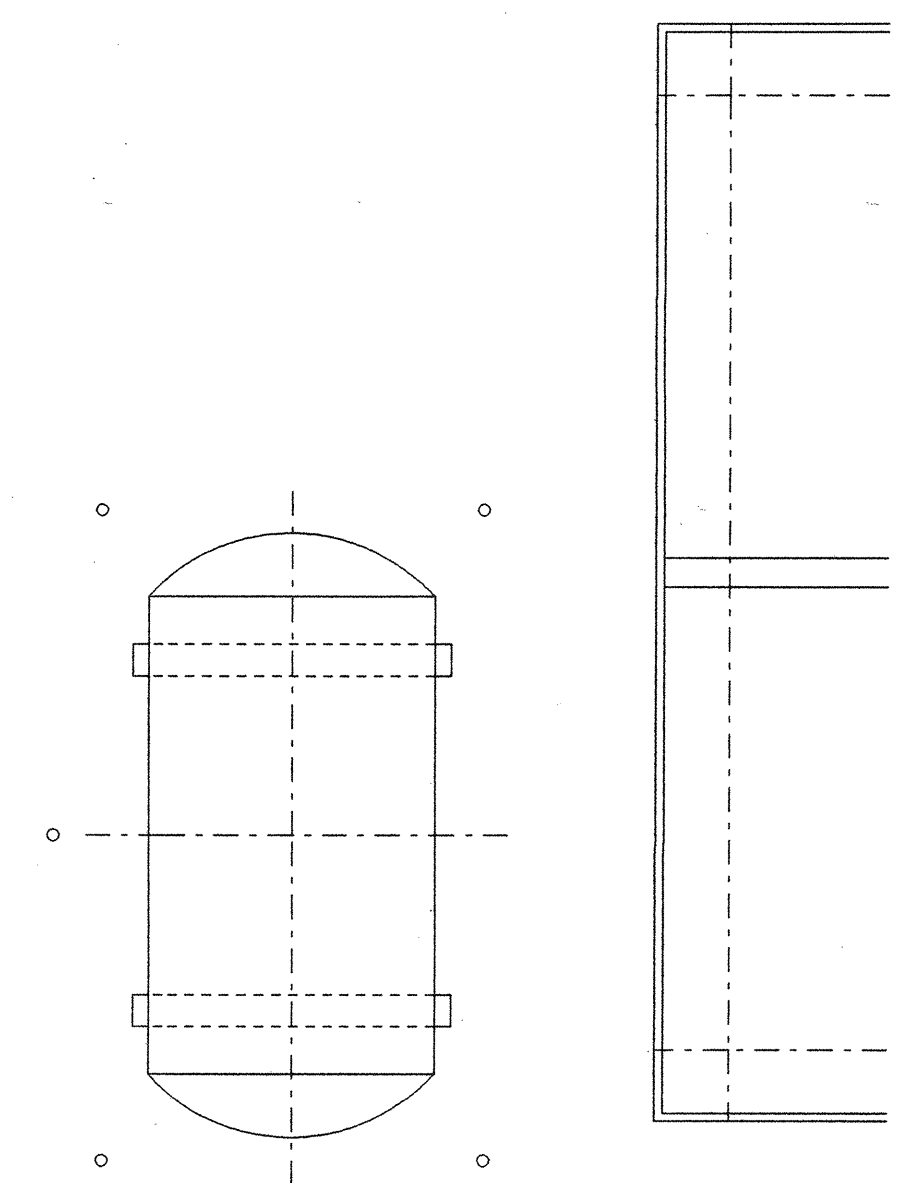


NOTES:

1. FOR LEGEND, ABBREVIATIONS AND GENERAL NOTES SEE SHEET LA-H-001 AND LA-H-002.
2. MAINTAIN MINIMUM 6'-8" CLEAR HEIGHT UNDER PIPES. FOR PIPE SUPPORT DETAILS SEE STRUCTURAL DRAWING WA-S-407.
3. PROVIDE FLOOR MOUNTED ELBOW SUPPORT AT THE PUMP SUCTION. CONTRACTOR MAY USE SUCTION DIFFUSER/STRAINER.
4. REFER TO SPECIFICATIONS FOR PIPE SUPPORT REQUIREMENTS.
5. SUPPORT PIPING TO ELIMINATE ANY LOADS TRANSMITTED FROM PIPING TO PUMPS AND CHILLERS.
6. FOR PIPING FLOW DIAGRAM SEE SHEET LA-H-121.
7. FOR VALVES AND CONTROL COMPONENTS SEE SHEET LA-H-121.
8. PROVIDE FLEXIBLE CONNECTOR ON THE COMPRESSED AIR DISCHARGE.
9. FOR CHILLERS AND PUMPS PIPING DETAILS SEE SHEETS LA-H-411 AND LA-H-412.
10. FOR EXACT LOCATION OF THE CHILLERS AND PUMPS SEE CIVIL DRAWINGS.



CORNER STATION CHILLER YARD PLAN
 1/4" = 1'-0"



KEY PLAN
 1/4" = 1'-0"

LIGO-D960971-01-O

| NO. | DATE | BY | CHKD | ENGR | PROJ | DESCRIPTION |
|-----|--------|-----|------|------|------|---------------------|
| 1 | 8-7-98 | DJB | AA | AA | WU | ISSUED FOR AS-BUILT |

| | | |
|--------------------------|-----|----------|
| ISSUED FOR CONSTRUCTION | | |
| DRAWN | CLP | 11-15-96 |
| CHECKED | MV | 10-25-96 |
| ENGINEER | AA | 1-23-96 |
| PROJ | TDM | 11-15-96 |
| AS-BUILT DRAWINGS | | |

PARSONS
 100 WEST WALNUT STREET
 PASADENA, CALIFORNIA

LIGO
 CALIFORNIA INSTITUTE OF TECHNOLOGY
 MASSACHUSETTS INSTITUTE OF TECHNOLOGY

LASER INTERFEROMETER
 GRAVITATIONAL-WAVE OBSERVATORY
 SITE NO. 2 - LIVINGSTON, LOUISIANA

| | | | |
|---|-----------------|-----------------|----------------|
| TITLE | SCALE | CONTRACT NUMBER | PROJECT NUMBER |
| HVAC CORNER STATION CHILLERS YARD FLOOR PLAN | AS NOTED | PP150969 | 8094 |
| | SHEET NUMBER | | |
| | LA-H-115 | | |

of PARSONS. They are loaned only with the consent of the borrower's expressed written agreement that they will be returned to the borrower.