

**NOTES:**

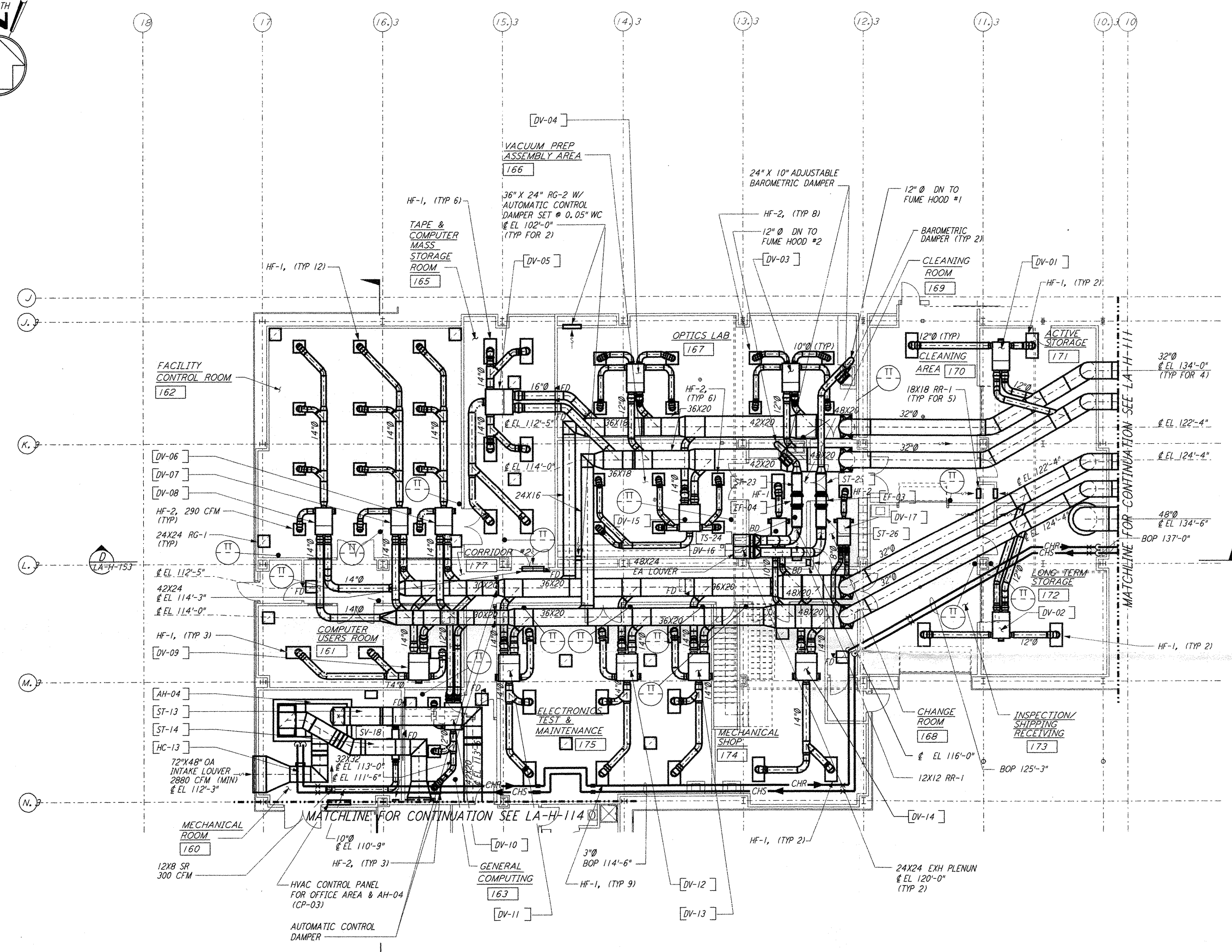
- FOR LEGEND, ABBREVIATIONS AND GENERAL NOTES SEE SHEETS LA-H-001 AND LA-H-002.
- ALL SUPPLY AIR DUCTS SHALL BE DOUBLE WALL WITH 1" RIGID INSULATION AND PERFORATED SHEET METAL LINER.
- RETURN AIR DUCTS SHALL BE DOUBLE WALL WITH 2" RIGID INSULATION AND PERFORATED SHEET METAL LINER.
- OUTSIDE AIR DUCTS AND INTAKE PLENUMS SHALL BE DOUBLE WALL WITH 2" INSULATION AND SHEET METAL JACKET.
- FUME HOOD EXHAUST DUCTS SHALL BE SINGLE WALL 304 STAINLESS STEEL, ALL WELDED. INSULATE DISCHARGE PLENUM UP TO THE EXHAUST FAN WITH 1" FIBERGLASS INSULATION & SHEET METAL JACKET.
- HF-1 (48"x24") SHALL BE 580 CFM EACH.
- HF-2 (24"x24") SHALL BE 290 CFM EACH.

VAV TERMINAL	VAV TERMINAL NUMBER	SIZE	CFM SETTING				TEMP SETTING	
			COLD		WARM		MIN	MAX
			MIN	MAX	MIN	MAX		
L-CS-171-DV-01	08	0	1160	0	1160	65	80	
L-CS-172-DV-02	08	0	1160	0	1160	65	80	
L-CS-173-DV-03	08	0	1160	0	1160	72	72	
L-CS-170-DV-04	08	0	1160	0	1160	72	72	
L-CS-167-DV-05	10	0	3480	0	3480	72	72	
L-CS-167-DV-06	08	0	1160	0	1160	72	72	
L-CS-166-DV-07	08	0	1160	0	1160	72	72	
L-CS-165-DV-08	08	0	1160	0	1160	72	72	
L-CS-164-DV-09	09	0	1740	0	1740	72	72	
L-CS-164-DV-10	07	0	870	0	870	72	72	
L-CS-162-DV-11	09	0	1740	0	1740	72	72	
L-CS-161-DV-12	09	0	1740	0	1740	72	72	
L-CS-174-DV-13	09	0	1740	0	1740	72	72	
L-CS-175-DV-14	09	0	1740	0	1740	72	72	
L-CS-175-DV-15	09	0	1740	0	1740	72	72	
L-CS-175-DV-16	05	0	580	0	580	72	72	
L-CS-175-DV-17	03	0	290	0	290	72	72	

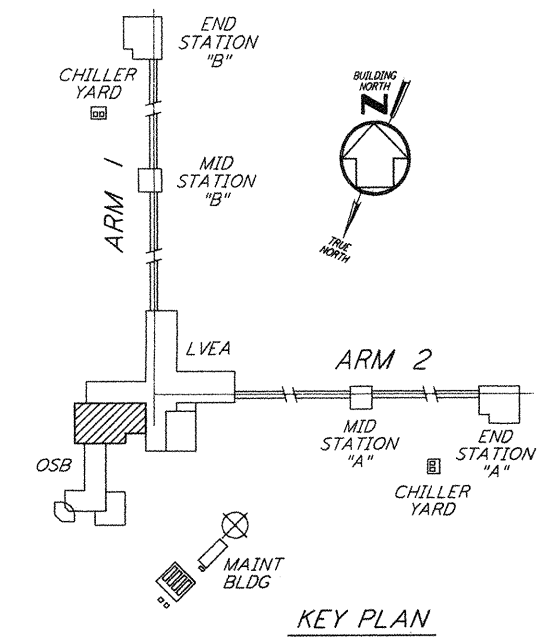
ALL VAV TERMINAL SHALL BE CONSTANT VOLUME, FACTORY PRESET

**LEGEND:**

- HF-1, HEPA FILTER OUTLET, 580 CFM, 48"x24" (TYP)
- HF-2, HEPA FILTER OUTLET, 290 CFM, 24"x24" (TYP)
- TT ROOM TEMPERATURE SENSOR/TRANSMITTER



**OSB FLOOR PLAN**  
 1/8" = 1'-0"



**KEY PLAN**  
 1/4" = 1'-0"

This document and the design it covers are the property of PARSONS. They are loaned only with the borrower's expressed written agreement that they will not be reproduced, copied, loaned, exhibited, or used in any other way, except by written consent from PARSONS to the borrower.

NO.	DATE	BY	CHKD	ENGR	PROJ	DESCRIPTION
3	5-21-99	AO	AA	AA	MDW	ISSUED AS REVISED AS-BUILT
2	8-7-98	DJB	AA	AA	MDW	ISSUED FOR AS-BUILT
1	3-20-97	WVK	AA	AA	TDM	REVISED NOTE 3

NO.	DATE	BY	CHKD	ENGR	PROJ	DESCRIPTION
1	10-15-96	CLP	AA	AA	TDM	ISSUED FOR CONSTRUCTION
2	10-25-96	MN	AA	AA	TDM	CHECKED
3	10-23-96	AA	AA	AA	TDM	ENGINEER
4	11-15-96	TDM	AA	AA	TDM	PROJ

**AS-BUILT DRAWINGS**

**PARSONS**  
 100 WEST WALNUT STREET  
 PASADENA, CALIFORNIA

**LIGO**  
 CALIFORNIA INSTITUTE OF TECHNOLOGY  
 MASSACHUSETTS INSTITUTE OF TECHNOLOGY

**LIGO-D960969-03-0**  
 LASER INTERFEROMETER  
 GRAVITATIONAL-WAVE OBSERVATORY  
 SITE NO. 2 - LIVINGSTON, LOUISIANA

TITLE	HVAC CORNER STATION OSB FLOOR PLAN SHEET 1	SCALE	AS NOTED	CONTRACT NUMBER	PP150969	PROJECT NUMBER	8094
SHEET NUMBER	LA-H-113	REVISIONS	3				