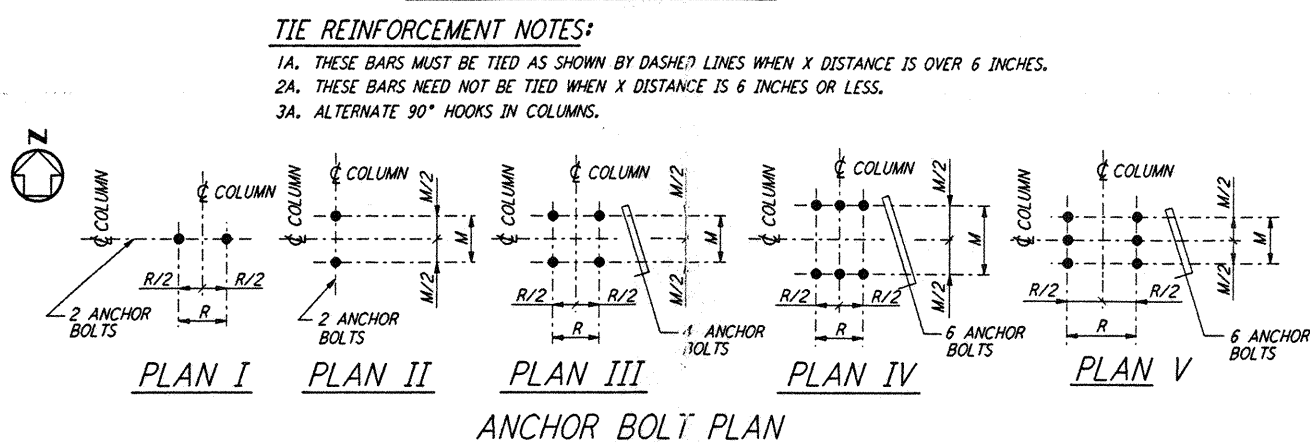
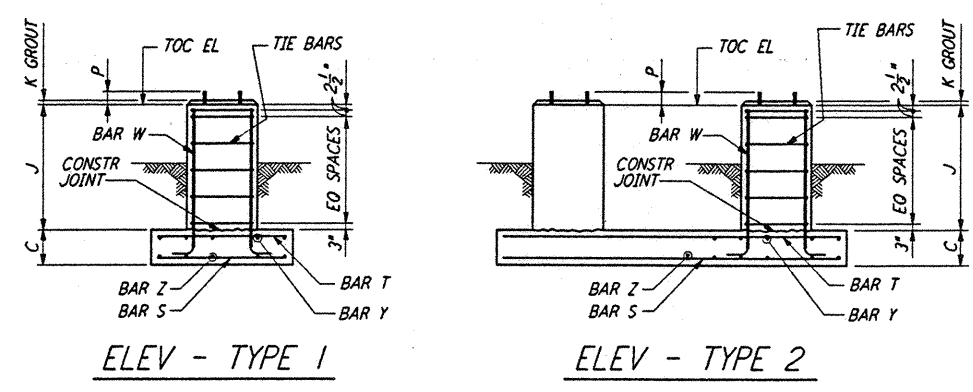


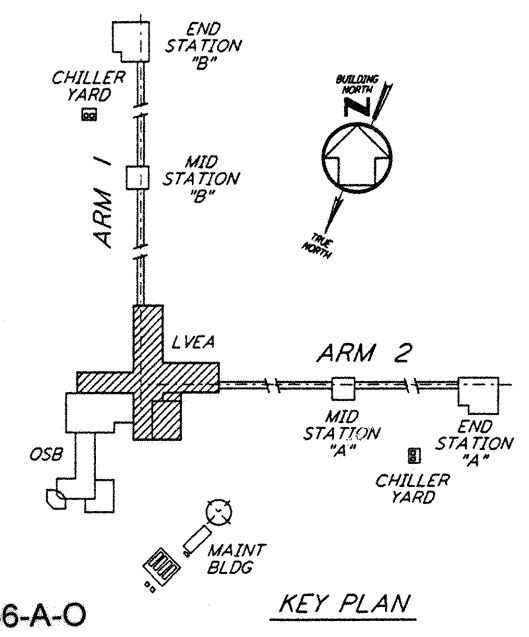
NOTES:
 1. CONSTRUCTION SHALL COMPLY WITH ALL THE REQUIREMENTS OF THE GENERAL NOTES ON DRAWING LA-S-001.
 2. THE BAR SPACING IS BASED ON CENTER TO CENTER OF TIE SET.
 3. FOR ANCHOR BOLT DETAILS SEE DETAIL W-S-003



TIE REINFORCEMENT NOTES:
 1A. THESE BARS MUST BE TIED AS SHOWN BY DASHED LINES WHEN X DISTANCE IS OVER 6 INCHES.
 2A. THESE BARS NEED NOT BE TIED WHEN X DISTANCE IS 6 INCHES OR LESS.
 3A. ALTERNATE 90° HOOKS IN COLUMNS.

FOUNDATION NO. OF FOMS REGD.	FOUNDATION LOCATION (COL LINES)	TOP OF CONC. EL.	FOUNDATION TYPE		A	B	C	DIMENSIONS														ANCHOR BOLT PLAN	TYPE	NO PER PIER	SIZE D	L	P	REINFORCING PER FOUNDATION						CONC CY	FDM LOC PLAN	REMARKS			
			PLAN	ELEV				D	E	F	G	H	J	K	M	R	N	BAR S NO.	BAR S SIZE	BAR Z NO.	BAR Z SIZE							BAR Y NO.	BAR Y SIZE	BAR W NO.	BAR W SIZE	TIE BAR TYPE	TIE BAR SIZE						
I	K-6	100'-0"	A	1	5'-0"	5'-0"	1'-0"	10"	10"	10"	1'-8"	1"	7"	7"	---	III	2	4	1"	1'-4"	4"	6	#5	6	#5	6	#5	6	#5	8	#6	B	#4	4	1.1	LA-S-101			
I	K-5	100'-0"	A	1	5'-0"	5'-0"	1'-0"	10"	10"	1'-4 1/2"	10"	10"	1'-8"	1"	7"	7"	---	III	2	4	1"	1'-4"	4"	6	#5	6	#5	6	#5	8	#6	B	#4	4	1.12	LA-S-101			
I	P-7	100'-0"	A	1	5'-0"	5'-0"	1'-0"	10"	10"	1'-4 1/2"	10"	10"	1'-8"	1"	7"	7"	---	III	2	4	1"	1'-4"	4"	6	#5	6	#5	6	#5	8	#6	B	#4	4	1.1	LA-S-101			
I	L-5	100'-0"	B	2	7'-0"	27'-0"	2'-0"	11"	1'-4 1/2"	11"	11"	2'-0"	1"	7"	7"	20'-0"	III	2	4	1 1/2"	2'-6"	6"	9	#6	32	#6	9	#6	32	#6	8	#6	B	#4	4	15.0	LA-S-101		
I	M-5	100'-0"	B	2	7'-0"	27'-0"	2'-0"	11"	1'-4 1/2"	11"	11"	2'-0"	1"	7"	7"	---	III	2	4	1 1/2"	2'-6"	6"	9	#6	32	#6	9	#6	32	#6	8	#6	B	#4	4	15.0	LA-S-101		
I	N-5	100'-0"						11"	1'-4 1/2"	11"	11"	2'-0"	1"	7"	7"	---	III	2	4	1 1/2"	2'-6"	6"						8	#6	B	#4	4	26.0	LA-S-101					
I	P-5	100'-0"						11"	1'-4 1/2"	1'-4 1/2"	11"	2'-0"	1"	7"	7"	---	III	2	4	1 1/2"	2'-6"	6"						8	#7	B	#4	4	26.0	LA-S-101					
I	P-6	100'-0"						11"	11"	1'-4 1/2"	11"	2'-0"	1"	7"	7"	---	III	2	4	1 1/2"	2'-6"	6"						8	#6	B	#4	4	26.0	LA-S-101					
I	A-8, 7, A-9, 7, A-10, B-7, B-10, C-7, C-10, D-7, D-10, E-7, E-10, G-2, G-3, G-4, G-5, H-12, H-13, H-14, H-15, H-7, I, I-7, J-1, J-2, J-3, J-4, J-5, J-12, J-13, J-14, J-15, J-16, K-10, N-8, N-10, P-10																		1"	7"	7"	---	III	2	4	1"	1'-4"	4"										LA-S-101	
I	A-7, A-8, F-7, F-10, G-1, G-5, G-7, G-10, H-1, H-10, H-11, H-16, I-16, J-6, J-7, J-8, J-11, K-7, K-8, L-8, L-10, M-8, M-10, P-8, P-9																		1"	7"	7"	---	III	2	4	1 1/2"	2'-6"	6"											LA-S-101

LVEA - CORNER STATION (FOR 2 INTERFEROMETER DESIGN)



This document and the design it covers are the property of PARSONS. They are loaned only with the borrower's expressed written agreement that they will not be reproduced, copied, loaned, exhibited, or used in any other way, except by written consent from PARSONS to the borrower.

REFERENCES			
NO.	DATE	DESCRIPTION	BY
A	6-14-96	MCS	

DRAWN	MCS
CHECKED	
ENGINEER	
PROJ	

PARSONS
 100 WEST WALNUT STREET
 PASADENA, CALIFORNIA

LIGO
 CALIFORNIA INSTITUTE OF TECHNOLOGY
 MASSACHUSETTS INSTITUTE OF TECHNOLOGY

LASER INTERFEROMETER
 GRAVITATIONAL-WAVE OBSERVATORY
 SITE NO. 2 - LIVINGSTON, LOUISIANA

TITLE: STRUCTURAL CORNER STATION - LVEA FOUNDATION SCHEDULE AND DETAILS
 SHEET NUMBER: LA-S-404
 CONTRACT NUMBER: PP150969
 PROJECT NUMBER: 8094