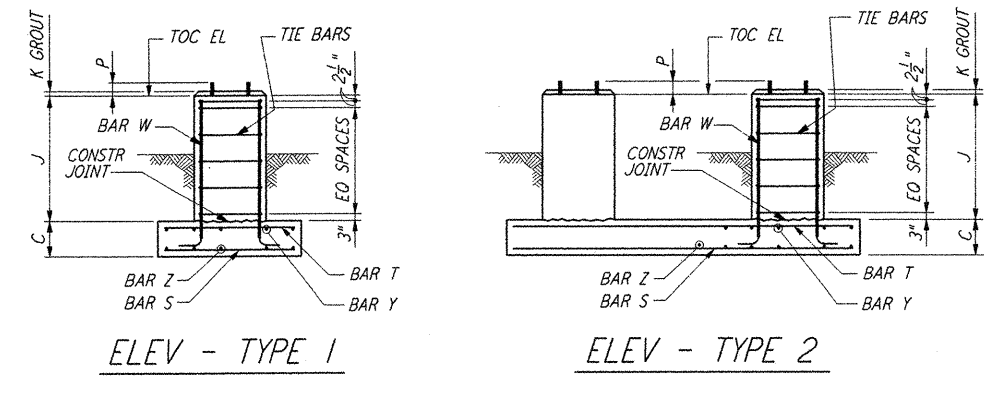
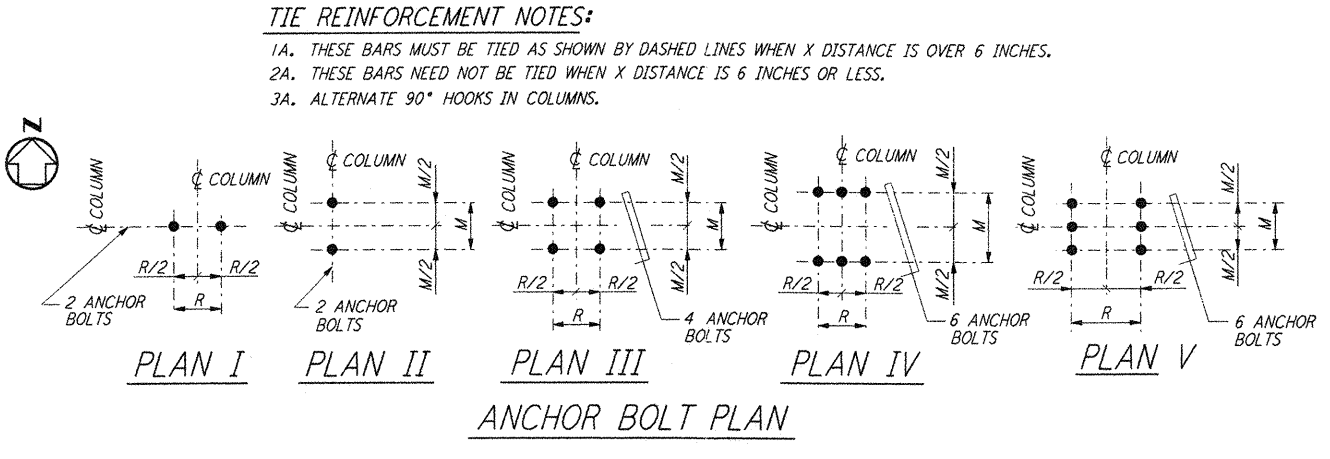


4 - BARS TYPE A  
 8 - BARS TYPE B  
 12 - BARS TYPE C  
 16 - BARS TYPE D  
 20 - BARS TYPE E  
 24 - BARS TYPE F  
 TIE ARRANGEMENT TYPE

**NOTES:**  
 1. CONSTRUCTION SHALL COMPLY WITH ALL THE REQUIREMENTS OF THE GENERAL NOTES ON DRAWING LA-S-001.  
 2. THE BAR SPACING IS BASED ON CENTER TO CENTER OF TIE SET.  
 3. FOR ANCHOR BOLT DETAILS SEE DETAIL (W-5-003)



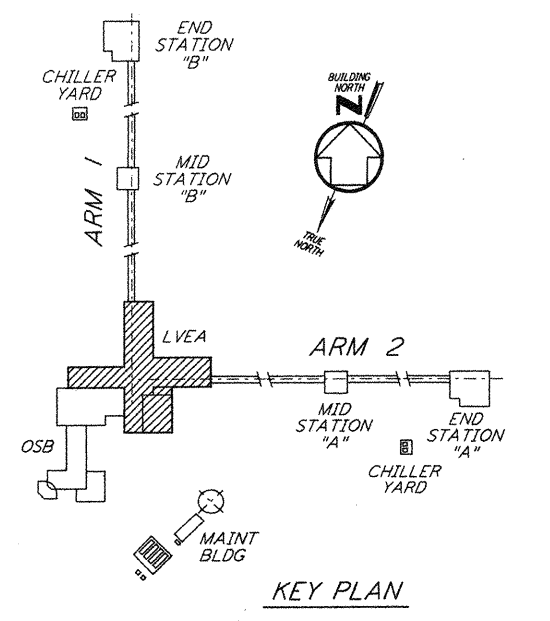
ELEV - TYPE 1  
 ELEV - TYPE 2



**TIE REINFORCEMENT NOTES:**  
 1A. THESE BARS MUST BE TIED AS SHOWN BY DASHED LINES WHEN X DISTANCE IS OVER 6 INCHES.  
 2A. THESE BARS NEED NOT BE TIED WHEN X DISTANCE IS 6 INCHES OR LESS.  
 3A. ALTERNATE 90° HOOKS IN COLUMNS.

PLAN I PLAN II PLAN III PLAN IV PLAN V  
 ANCHOR BOLT PLAN

NO OF FDN'S REQD	FOUNDATION LOCATION (COL LINES)	TOP OF CONC EL	FOUNDATION TYPE	DIMENSIONS															ANCHOR BOLTS						REINFORCING PER FOUNDATION						CONC CY	FDN LOC PLAN	REMARKS							
				PLAN	ELEV	A	B	C	D	F	G	H	J	K	M	R	N	ANCHOR BOLT PLAN	TYPE	NO PER PIER	SIZE	L	P	BAR S NO SIZE	BAR Z NO SIZE	BAR T NO SIZE	BAR Y NO SIZE	BAR W NO SIZE	TIE BAR TYPE SIZE	NO REQD										
1	K-6	100'-0"	A	1	5'-0"	5'-0"	1'-0"	10"	10"	10"	10"	1'-8"	1"	7"	7"		III	2	4	1"	1'-4"	4"	6	#5	6	#5	6	#5	6	#5	6	#5	8	#6	8	#4	4	1.1	LA-S-101	
1	K-5	100'-0"	A	1	5'-0"	5'-0"	1'-0"	10"	1'-4 1/2"	10"	10"	1'-8"	1"	7"	7"		III	2	4	1"	1'-4"	4"	6	#5	6	#5	6	#5	6	#5	8	#6	8	#4	4	1.12	LA-S-101			
1	P-7	100'-0"	A	1	5'-0"	5'-0"	1'-0"	10"	10"	1'-4 1/2"	10"	1'-8"	1"	7"	7"		III	2	4	1"	1'-4"	4"	6	#5	6	#5	6	#5	6	#5	8	#6	8	#4	4	1.1	LA-S-101			
1	L-5	100'-0"	B	2	7'-0"	27'-0"	2'-0"	11"	1'-4 1/2"	11"	11"	2'-0"	1"	7"	7"	20'-0"	III	2	4	1 1/2"	2'-6"	6"	9	#6	32	#6	9	#6	32	#6	8	#6	8	#4	4	15.0	LA-S-101			
1	M-5	100'-0"						11"	1'-4 1/2"	11"	11"	2'-0"	1"	7"	7"		III	2	4	1 1/2"	2'-6"	6"							8	#6	8	#4	4							
1	N-5	100'-0"						11"	1'-4 1/2"	11"	11"	2'-0"	1"	7"	7"		III	2	4	1 1/2"	2'-6"	6"							8	#6	8	#4	4							
1	P-5	100'-0"						11"	1'-4 1/2"	1'-4 1/2"	11"	2'-0"	1"	7"	7"		III	2	4	1 1/2"	2'-6"	6"							8	#7	8	#4	4	26.0	LA-S-101	FOR ADDITIONAL INFORMATION SEE FDN LOCATION PLAN				
1	P-6	100'-0"						11"	1'-4 1/2"	11"	11"	2'-0"	1"	7"	7"		III	2	4	1 1/2"	2'-6"	6"						8	#6	8	#4	4								
1	A-8, 7, A-9, 7, A-10, B-7, B-10, C-7, C-10, D-7, D-10, E-7, E-10, G-2, G-3, G-4, G-5, H-12, H-13, H-14, H-15, H-7-1, I-7-1, J-1, J-2, J-3, J-4, J-5, J-12, J-13, J-14, J-15, J-16, K-10, N-8, N-10, P-10																III	2	4	1"	1'-4"	4"																		
1	A-7, A-8, F-7, F-10, G-1, G-6, G-7, G-10, H-1, H-10, H-11, H-16, I-16, J-7, J-6, J-11, K-7, K-8, L-8, L-10, M-8, M-10, P-8, P-9																III	2	4	1 1/2"	2'-6"	6"																		



KEY PLAN  
**LIGO-D960956-01-0**

This document and the design it covers are the property of PARSONS. They are loaned only with the borrower's expressed written agreement that they will not be reproduced, copied, loaned, exhibited, or used in any other way, except by written consent from PARSONS.

This document and the design it covers are the property of PARSONS. They are loaned only with the borrower's expressed written agreement that they will not be reproduced, copied, loaned, exhibited, or used in any other way, except by written consent from PARSONS.

NO.	DATE	BY	CHKD	ENGR	PROJ	DESCRIPTION
1	08-07-98	WA	[Signature]	[Signature]	[Signature]	ISSUED FOR AS-BUILT

ISSUED FOR CONSTRUCTION  
 DRAWN MCS 11-15-96  
 CHECKED DDM 11-15-96  
 ENGINEER BP 11-15-96  
 PROJ TDM 11-15-96  
**AS-BUILT DRAWINGS**

**PARSONS**  
 100 WEST WALNUT STREET  
 PASADENA, CALIFORNIA

**LIGO**  
 CALIFORNIA INSTITUTE OF TECHNOLOGY  
 MASSACHUSETTS INSTITUTE OF TECHNOLOGY

LASER INTERFEROMETER  
 GRAVITATIONAL-WAVE OBSERVATORY  
 SITE NO.2 - LIVINGSTON, LOUISIANA  
**STRUCTURAL CORNER STATION - LVEA FOUNDATION SCHEDULE AND DETAILS**  
 SCALE NONE CONTRACT NUMBER PP150969 PROJECT NUMBER 8094  
**LA-S-404**