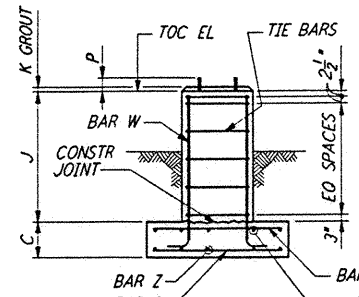
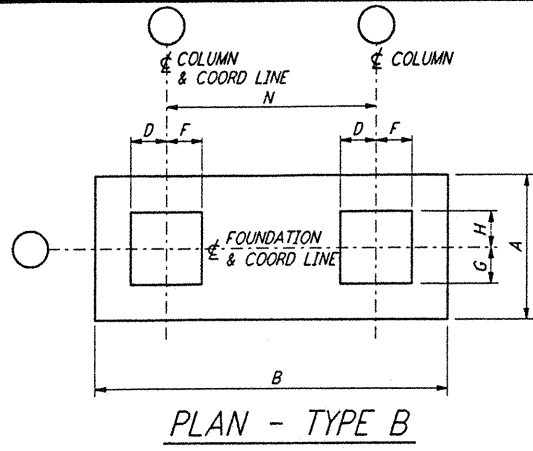


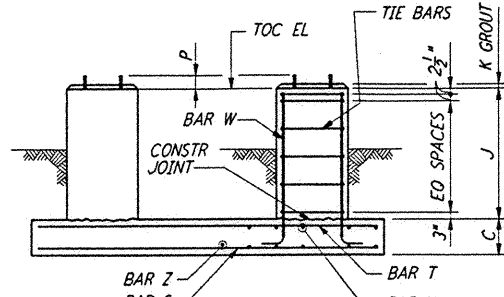
PLAN - TYPE A



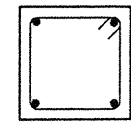
ELEV - TYPE 1



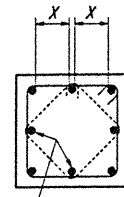
PLAN - TYPE B



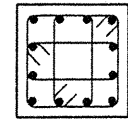
ELEV - TYPE 2



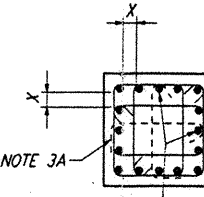
4 - BARS
TYPE A



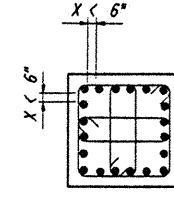
8 - BARS
TYPE B



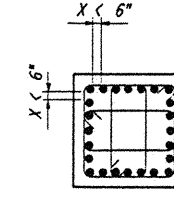
12 - BARS
TYPE C



16 - BARS
TYPE D



20 - BARS
TYPE E

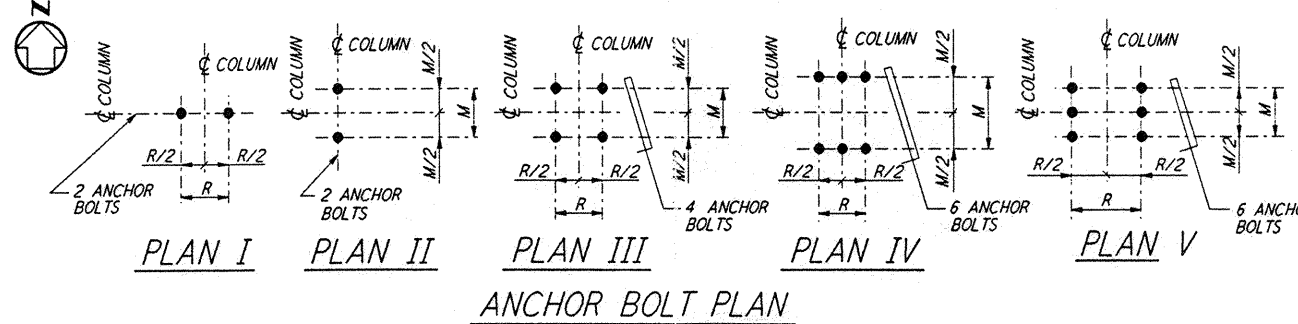


24 - BARS
TYPE F

TIE ARRANGEMENT TYPE

TIE REINFORCEMENT NOTES:

- 1A. THESE BARS MUST BE TIED AS SHOWN BY DASHED LINES WHEN X DISTANCE IS OVER 6 INCHES.
- 2A. THESE BARS NEED NOT BE TIED WHEN X DISTANCE IS 6 INCHES OR LESS.
- 3A. ALTERNATE 90° HOOKS IN COLUMNS.



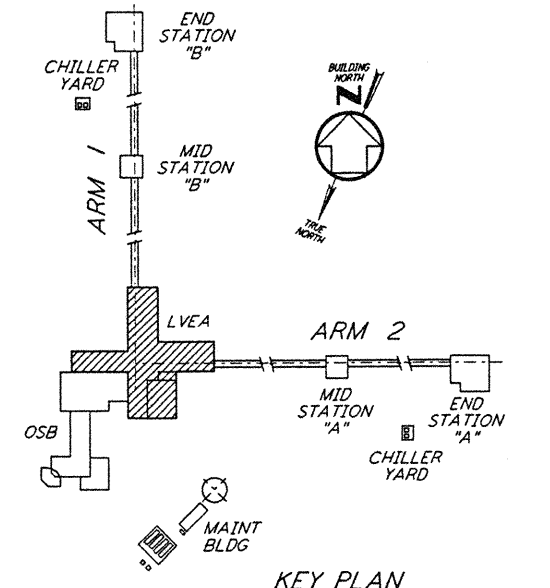
ANCHOR BOLT PLAN

NOTES:

1. CONSTRUCTION SHALL COMPLY WITH ALL THE REQUIREMENTS OF THE GENERAL NOTES ON DRAWING LA-5-001.
2. THE BAR SPACING IS BASED ON CENTER TO CENTER OF TIE SET.
3. FOR ANCHOR BOLT DETAILS SEE DETAIL W-S-003

FOUNDATION NO OF FDN'S REQ'D.	FOUNDATION LOCATION (COL LINES)	TOP OF CONC EL.	FOUNDATION TYPE	DIMENSIONS														ANCHOR BOLTS				REINFORCING PER FOUNDATION								CONC CY	FDM LOC PLAN	REMARKS																				
				PLAN		ELEV		A		B		C		D		F		G		H		J		K		M		R					N		ANCHOR BOLT PLAN	TYPE	NO PER PIER	SIZE D	L	P	BAR S		BAR Z		BAR T		BAR Y		BAR W		TIE BAR	
				NO	LOC	ELEV	A	B	C	D	F	G	H	J	K	M	R	N	NO	SIZE	NO	SIZE	NO	SIZE	NO	SIZE	NO	SIZE	NO				SIZE	NO							SIZE	NO	SIZE	NO	SIZE	NO	SIZE	NO	SIZE	NO	SIZE	NO
1	K-6	100'-0"	A 1	5'-0"	5'-0"	1'-0"	10"	10"	10"	10"	1'-8"	1"	7"	7"	—	III	2	4	1"	1'-4"	4"	6	#5	6	#5	6	#5	6	#5	6	#5	6	#5	6	#5	6	#5	6	#5	8	#6	8	#4	4	1.1	LA-5-101						
1	K-5	100'-0"	A 1	5'-0"	5'-0"	1'-0"	10"	10"	1'-4 1/2"	10"	10"	1'-8"	1"	7"	7"	—	III	2	4	1"	1'-4"	4"	6	#5	6	#5	6	#5	6	#5	6	#5	6	#5	6	#5	8	#6	8	#4	4	1.12	LA-5-101									
1	P-7	100'-0"	A 1	5'-0"	5'-0"	1'-0"	10"	10"	1'-4 1/2"	10"	10"	1'-8"	1"	7"	7"	—	III	2	4	1"	1'-4"	4"	6	#5	6	#5	6	#5	6	#5	6	#5	6	#5	6	#5	8	#6	8	#4	4	1.1	LA-5-101									
1	L-5	100'-0"	B 2	7'-0"	27'-0"	2'-0"	11"	1'-4 1/2"	11"	11"	2'-0"	1"	7"	7"	20'-0"	III	2	4	1 1/2"	2'-6"	6"	9	#6	32	#6	9	#6	32	#6	8	#6	8	#6	8	#6	8	#6	8	#4	4	15.0	LA-5-101										
1	M-5	100'-0"	B 2	7'-0"	27'-0"	2'-0"	11"	1'-4 1/2"	11"	11"	2'-0"	1"	7"	7"	20'-0"	III	2	4	1 1/2"	2'-6"	6"	9	#6	32	#6	9	#6	32	#6	8	#6	8	#6	8	#6	8	#6	8	#4	4												
1	N-5	100'-0"	—	—	—	—	11"	1'-4 1/2"	11"	11"	2'-0"	1"	7"	7"	—	III	2	4	1 1/2"	2'-6"	6"	—	—	—	—	—	—	—	—	8	#6	8	#6	8	#6	8	#4	4	26.0	LA-5-101	FOR ADDITIONAL INFORMATION SEE FDN LOCATION PLAN											
1	P-5	100'-0"	—	—	—	—	11"	1'-4 1/2"	1'-4 1/2"	11"	2'-0"	1"	7"	7"	—	III	2	4	1 1/2"	2'-6"	6"	—	—	—	—	—	—	—	—	8	#7	8	#4	4	—	—	—	—														
1	P-6	100'-0"	—	—	—	—	11"	11"	1'-4 1/2"	11"	2'-0"	1"	7"	7"	—	III	2	4	1 1/2"	2'-6"	6"	—	—	—	—	—	—	—	—	8	#6	8	#4	4	—	—	—	—														
1	A-8, 7, A-9, 7, A-10, B-7, B-10, C-7, C-10, D-7, D-10, E-7, E-10, F-2, F-3, G-4, G-5, H-12, H-13, H-14, H-15, H-7, 1, I-7, 1, J-1, J-2, J-3, J-4, J-5, J-12, J-13, J-14, J-15, J-16, K-10, N-8, N-10, P-10	—	—	—	—	—	—	—	—	—	1"	7"	7"	—	III	2	4	1"	1'-4"	4"	—	—	—	—	—	—	—	—	—	—	—	—	—	—	—	—	—	—	—	—	—											
1	A-7, A-8, F-7, F-10, G-1, G-6, G-7, G-10, H-1, H-10, H-11, H-16, F-16, J-6, J-7, J-10, J-11, K-7, K-8, L-8, L-10, M-8, M-10, P-8, P-9	—	—	—	—	—	—	—	—	—	1"	7"	7"	—	III	2	4	1 1/2"	2'-6"	6"	—	—	—	—	—	—	—	—	—	—	—	—	—	—	—	—	—	—	—	—	—											

LVEA - CORNER STATION (FOR INTERFEROMETER DESIGN)



KEY PLAN

not be reproduced, copied, loaned, exhibited, or used in any other way, except by written consent from PARSONS to the borrower.

This document and the design it covers are the property of PARSONS. They are loaned only with the borrower's expressed written agreement that they will

REFERENCES	REVISIONS	ISSUED FOR CONSTRUCTION
DRAWING NO.	NO.	DATE
DESCRIPTION	BY	CHKO
	ENGR	PROJ
		DESCRIPTION

DRAWN	MCS	11-16-96
CHECKED	BBA	11-15-96
ENGINEER	B/T	11-15-96
PROJ	B/M	11/15/96



LASER INTERFEROMETER GRAVITATIONAL-WAVE OBSERVATORY SITE NO. 2 - LIVINGSTON, LOUISIANA		
TITLE	STRUCTURAL CORNER STATION - LVEA FOUNDATION SCHEDULE AND DETAILS	PROJECT NUMBER
SCALE	NONE	PPI50969 8094
SHEET NUMBER	LA-S-404	REVISIONS