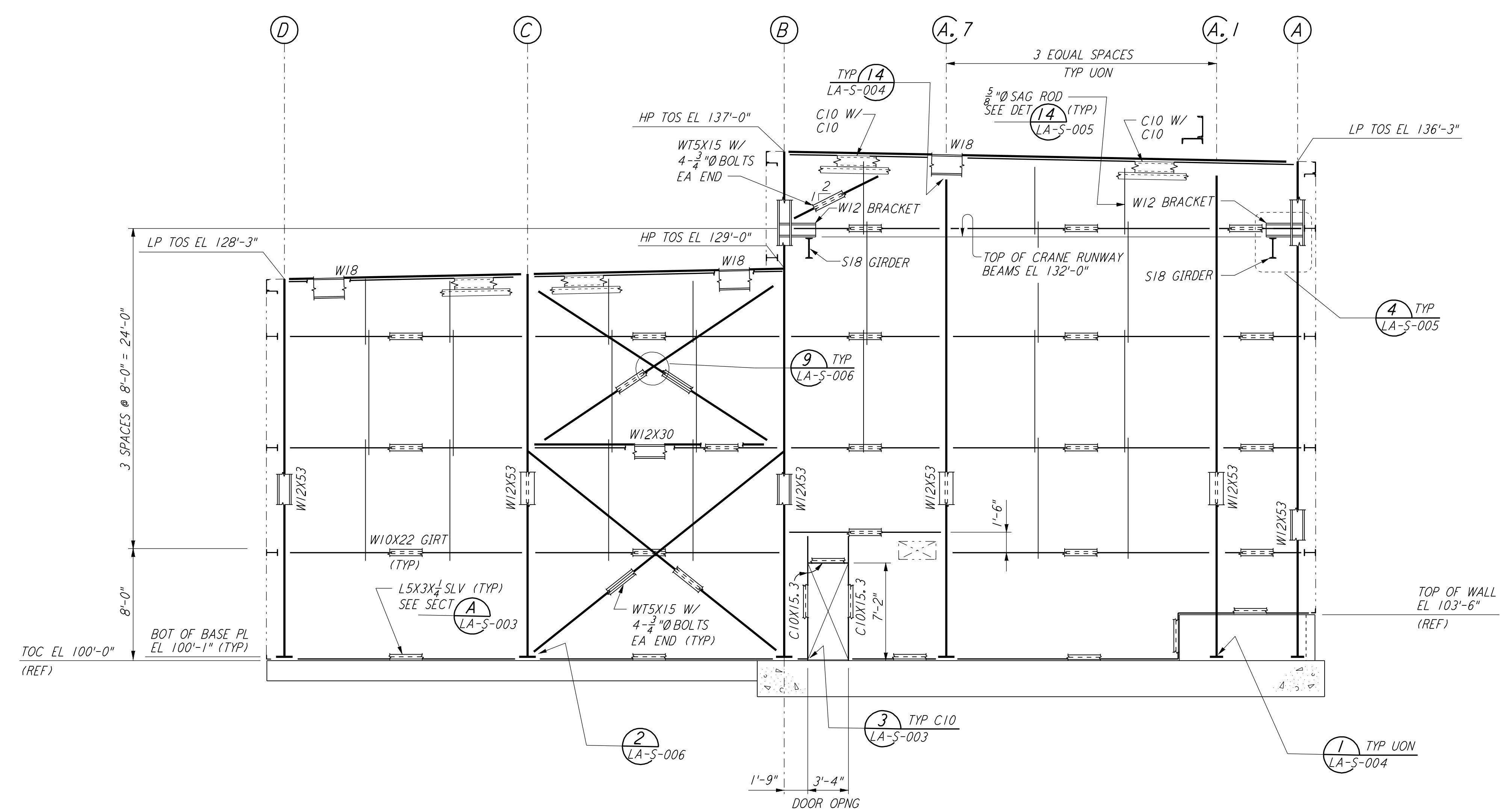
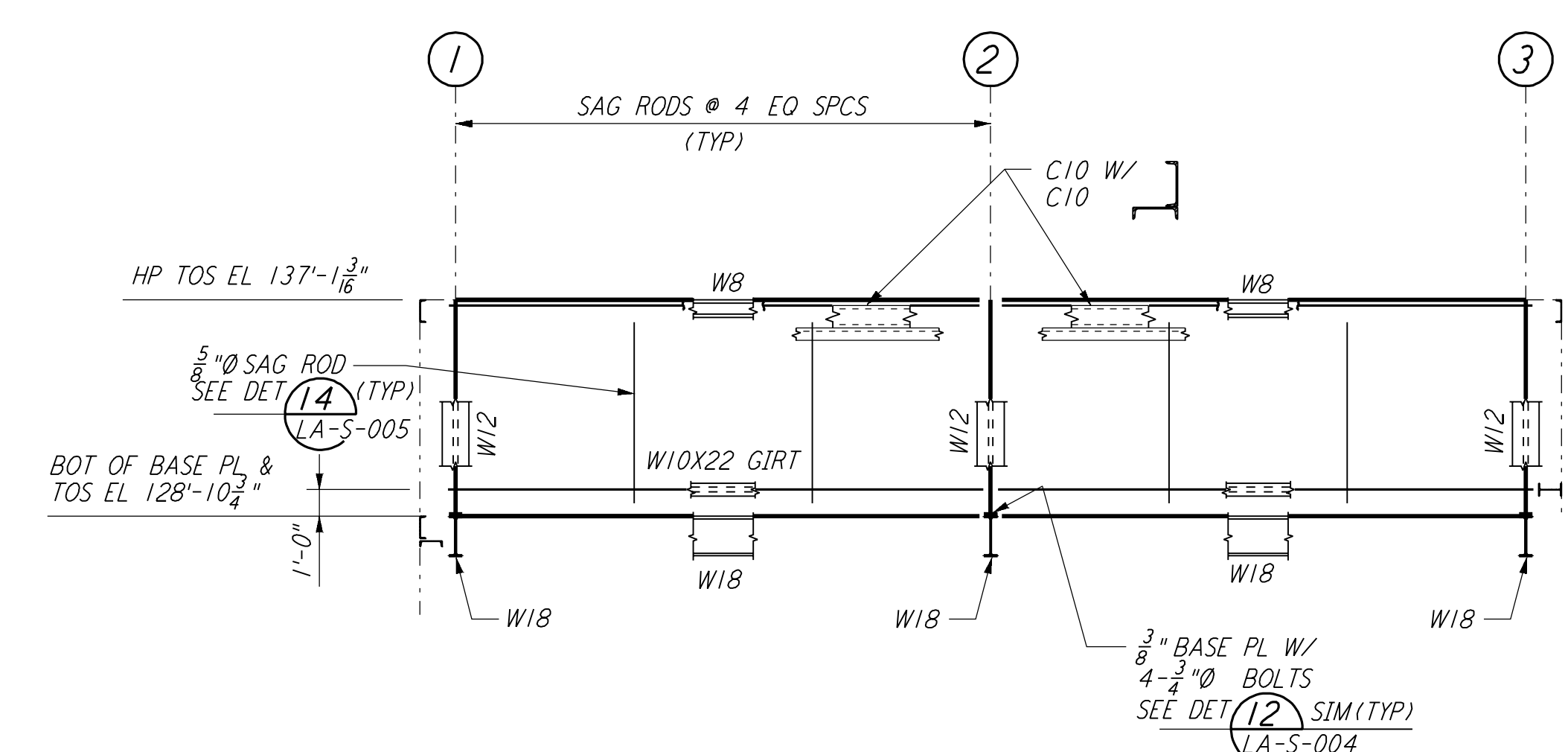


This document and the design it covers are the property of PARSONS. They are loaned only with the borrower's expressed written agreement that they will not be reproduced, copied, loaned, exhibited, or used in any other way, except by written consent from PARSONS to the borrower.

This document and the design it covers are the property of PARSONS. They are loaned only with the borrower's expressed written agreement that they will not be reproduced, copied, loaned, exhibited, or used in any other way, except by written consent from PARSONS to the borrower.



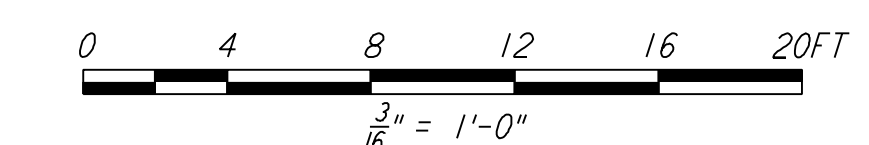
LOOKING NORTH - FOR END STATION "B" ON ARM 1
 LOOKING WEST - FOR END STATION "A" ON ARM 2
 ELEVATION AT COLUMN LINE B.1
 $\frac{3}{16}'' = 1'-0''$



LOOKING WEST - FOR END STATION "A" ON ARM 1
 LOOKING NORTH - FOR END STATION "B" ON ARM 2
 ELEVATION AT COLUMN LINE B.1
 $\frac{3}{16}'' = 1'-0''$

NOTE:

FOR NOTES SEE DRAWING LA-S-305.



LIGO-D960951-01-O

NO.	DATE	BY	CHKD	ENGR	PROJ	DESCRIPTION
1	08-07-98	WA				ISSUED FOR AS-BUILT

ISSUED FOR CONSTRUCTION		
DRAWN	MCS	11-15-96
CHECKED	DDM	11-15-96
ENGINEER	BP	11-15-96
PROJ	TDM	11-15-96
AS-BUILT DRAWINGS		


PARSONS
 100 WEST WALNUT STREET
 PASADENA, CALIFORNIA


LIGO
 CALIFORNIA INSTITUTE OF TECHNOLOGY
 MASSACHUSETTS INSTITUTE OF TECHNOLOGY

LASER INTERFEROMETER
 GRAVITATIONAL-WAVE OBSERVATORY
 SITE NO. 2 - LIVINGSTON, LOUISIANA

TITLE	STRUCTURAL END STATIONS "A" & "B" FRAMING ELEVATIONS SHEET 3	SCALE	AS NOTED	CONTRACT NUMBER	PP150969	PROJECT NUMBER	8094
SHEET NUMBER	LA-S-307	REVISIONS	