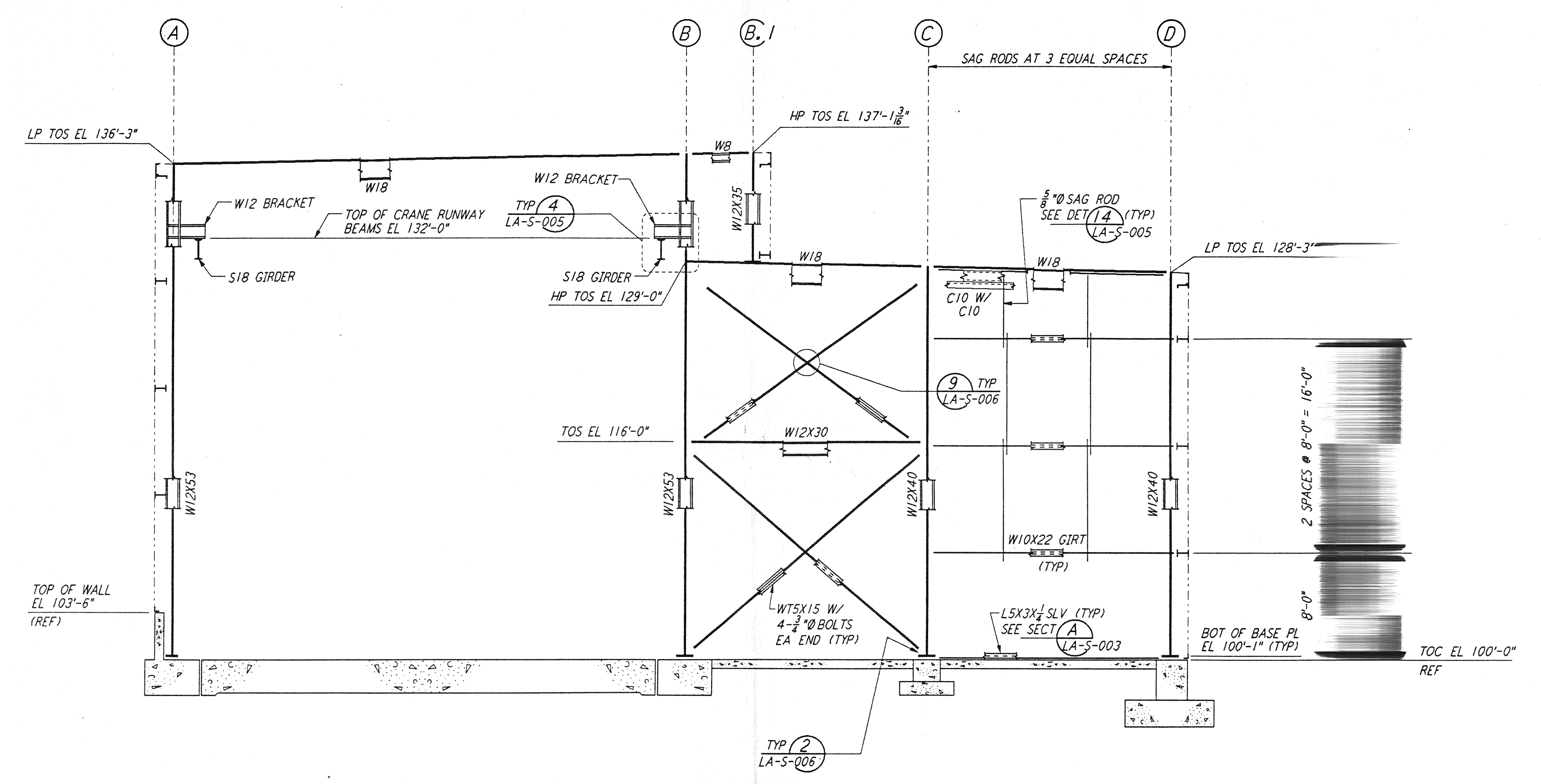
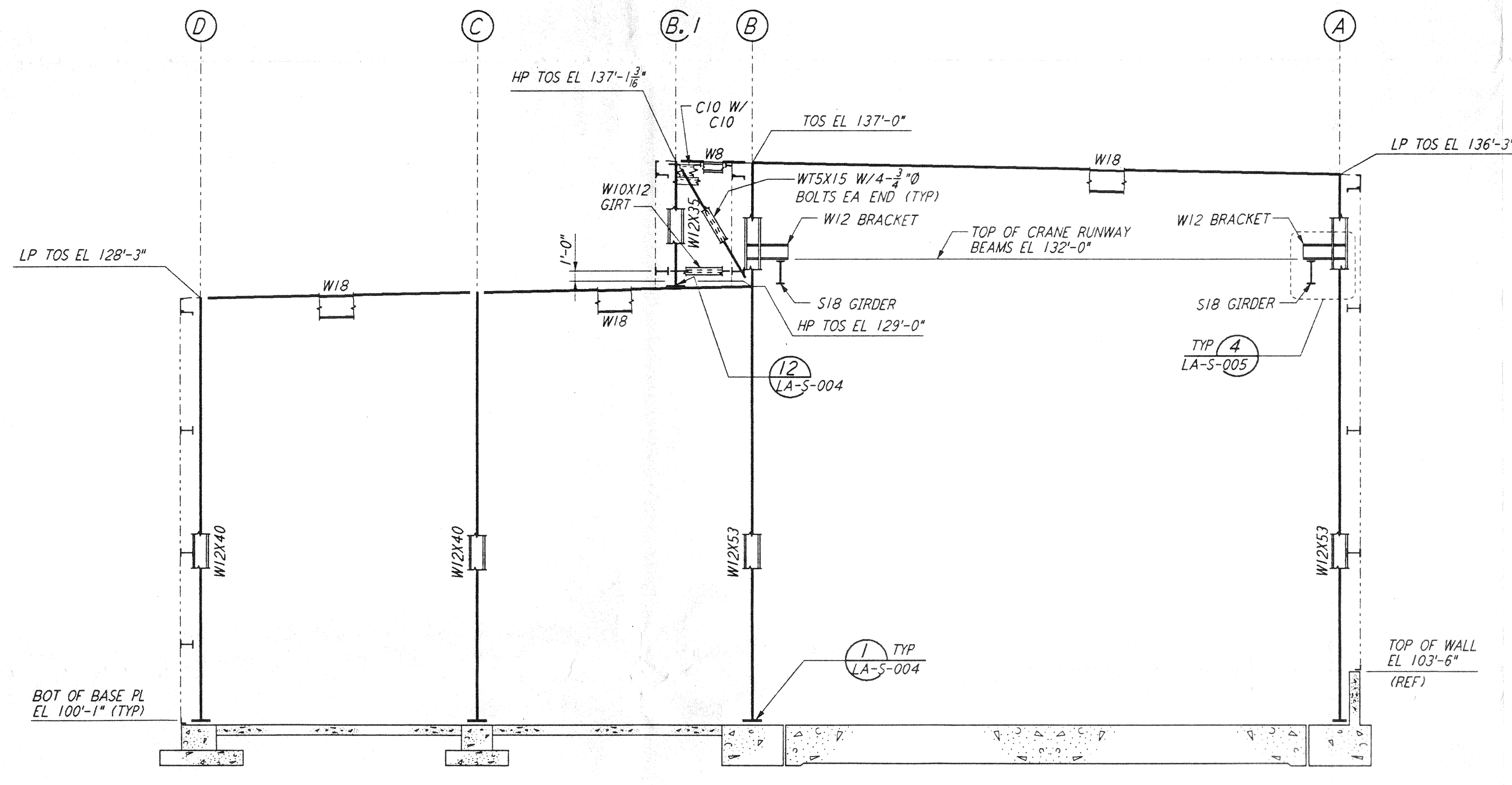


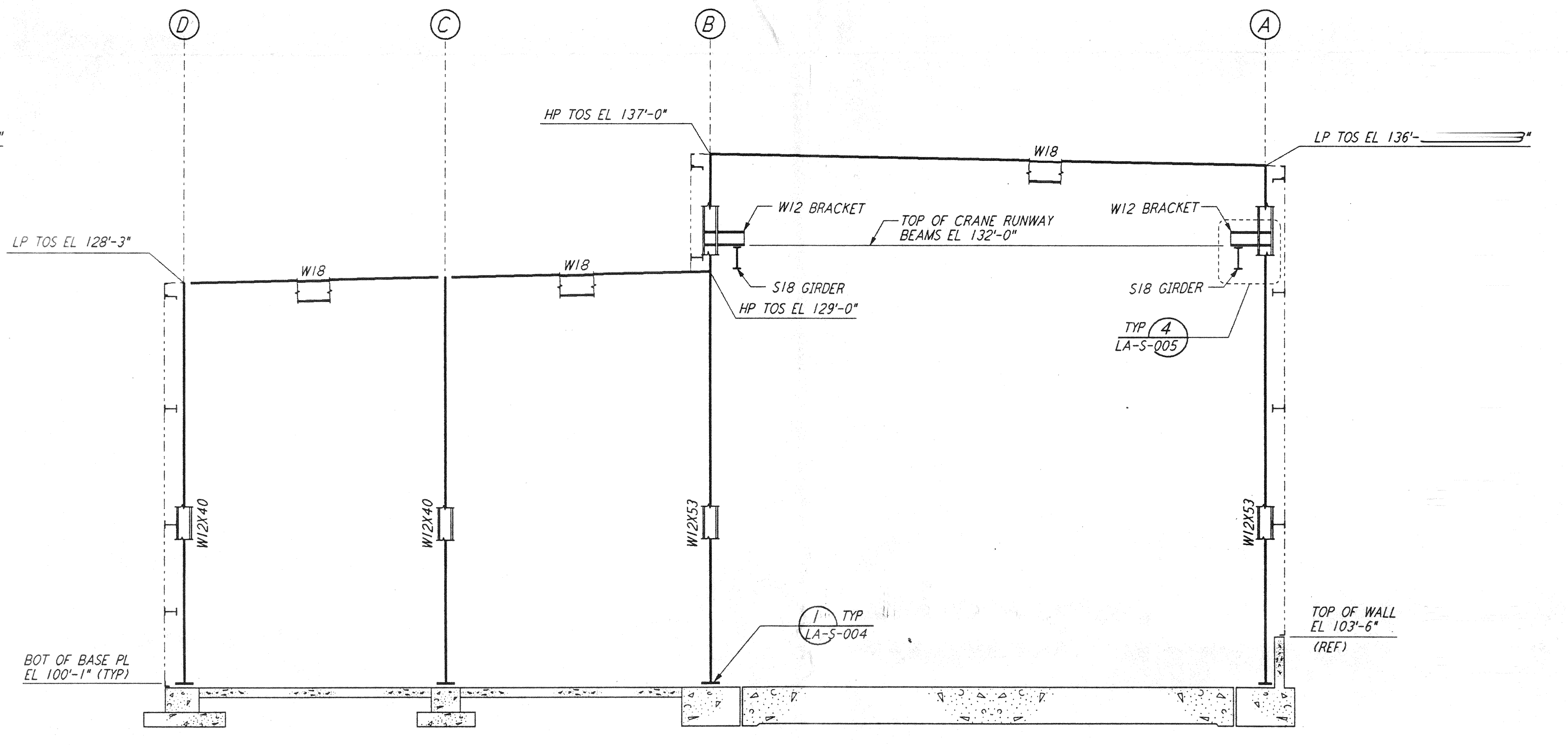
LOOKING SOUTH - FOR END STATION "B" ON ARM 1
LOOKING EAST - FOR END STATION "A" ON ARM 2
ELEVATION AT COLUMN LINE 1
3/8" = 1'-0"



LOOKING SOUTH - FOR END STATION "B" ON ARM 1
LOOKING EAST - FOR END STATION "A" ON ARM 2
ELEVATION AT COLUMN LINE 2
3/8" = 1'-0"

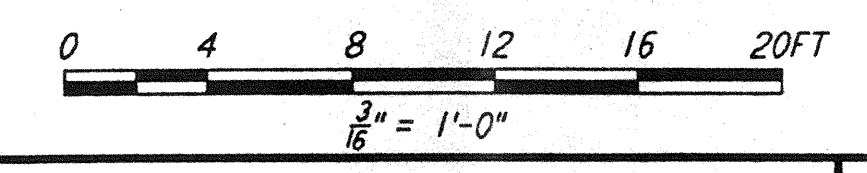


LOOKING NORTH - FOR END STATION "B" ON ARM 1
LOOKING WEST - FOR END STATION "A" ON ARM 2
ELEVATION AT COLUMN LINE 3
3/8" = 1'-0"



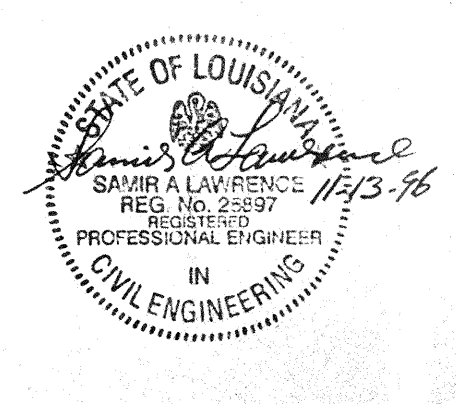
LOOKING NORTH - FOR END STATION "B" ON ARM 1
LOOKING WEST - FOR END STATION "A" ON ARM 2
ELEVATION AT COLUMN LINE 4
3/8" = 1'-0"

- NOTES:
1. FOR NOTES SEE DRAWING LA-S-107.
2. FOR VERTICAL BRACING CONNECTIONS, SEE DETAIL LA-S-006



DRAWING NO.	DESCRIPTION	NO.	DATE	BY	CHKD	ENGR	PROJ	DESCRIPTION

ISSUED FOR CONSTRUCTION	
DRAWN	MCS 11-15-96
CHECKED	gem 11-15-96
ENGINEER	BP 11-15-96
PROJ	epm 11/15/96



PARSONS
100 WEST WALNUT STREET
PASADENA, CALIFORNIA

LIGO
CALIFORNIA INSTITUTE OF TECHNOLOGY
MASSACHUSETTS INSTITUTE OF TECHNOLOGY

LASER INTERFEROMETER
GRAVITATIONAL-WAVE OBSERVATORY
SITE NO. 2 - LIVINGSTON, LOUISIANA

STRUCTURAL
END STATIONS "A" & "B"
FRAMING ELEVATIONS
SHEET 1

SCALE: AS NOTED
CONTRACT NUMBER: PP15-969
PROJECT NUMBER: 8094
SHEET NUMBER: LA-S-305