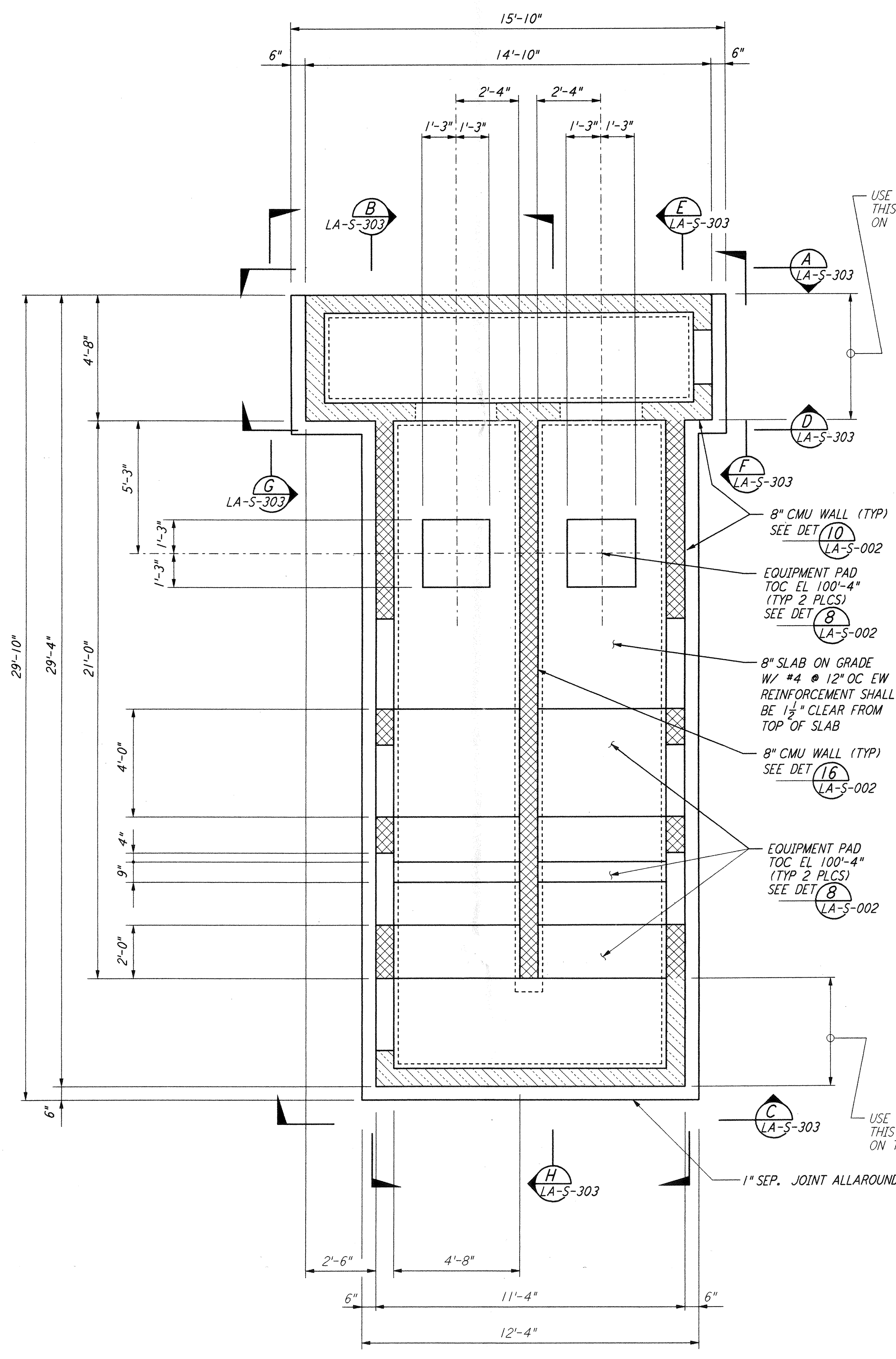
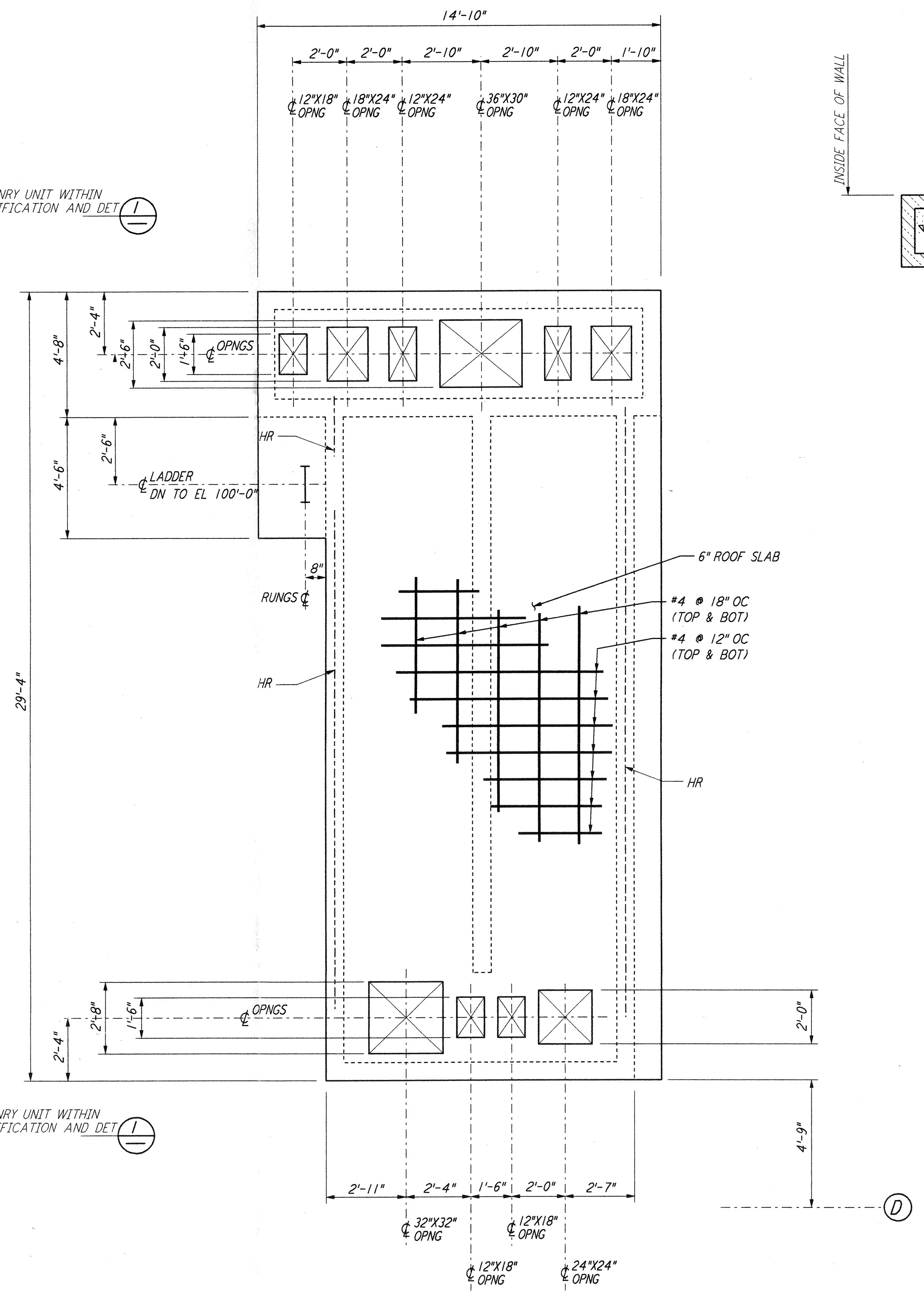


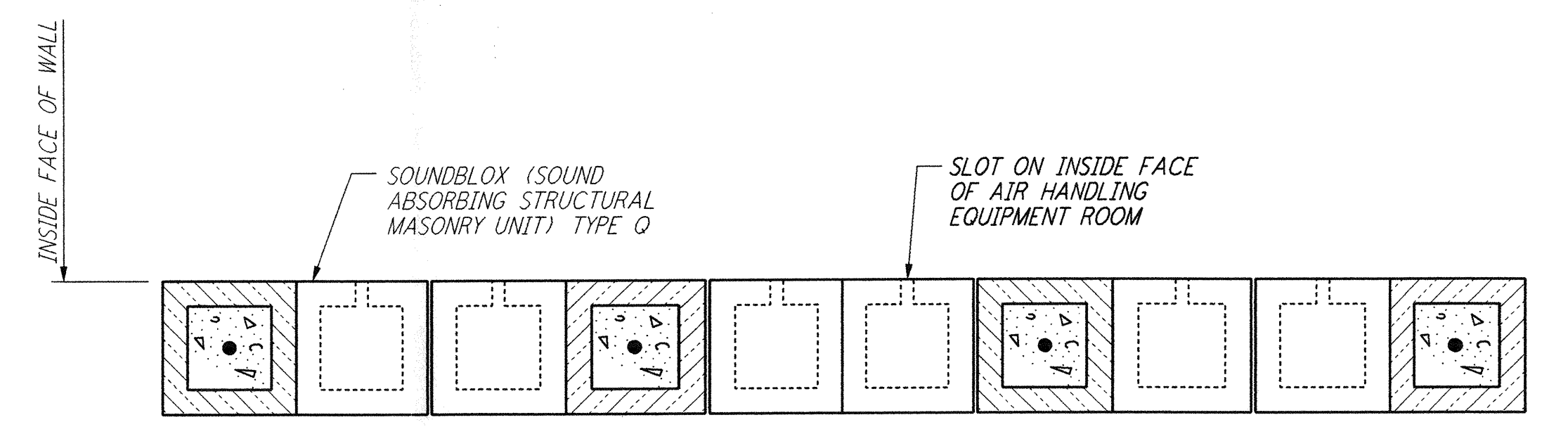
This document and the design it covers are the property of PARSONS. They are loaned only with the borrower's expressed written agreement that they will not be reproduced, copied, loaned, exhibited, or used in any other way, except by written consent from PARSONS to the borrower.



AIR HANDLING UNIT STRUCTURE
FOUNDATION PLAN
3/8" = 1'-0"

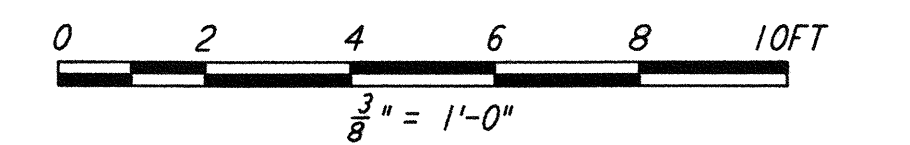


AIR HANDLING UNIT STRUCTURE
CONCRETE ROOF SLAB PLAN
3/8" = 1'-0"



TYPICAL SECTION OF SOUNDBLOX MASONRY WALL
DETAIL 1
1 1/2" = 1'-0"

- NOTES:
1. LOCATION AND SIZE OF ALL EQUIPMENT PADS ARE FOR BID PURPOSE ONLY. CONTRACTOR SHALL ADJUST TO SUIT ACTUAL EQUIPMENT AND SUBMIT DRAWINGS SHOWING ACTUAL SIZES AND LOCATIONS PRIOR TO CONSTRUCTION.
 2. FOR AIR HANDLING UNIT STRUCTURE ORIENTATION, SEE FOUNDATION PLAN ON DRAWING LA-S-301.



LIGO-D960946-01-0

ISSUED FOR CONSTRUCTION		
DRAWN	MCS	11-15-96
CHECKED	DDM	11-15-96
ENGINEER	BP	11-15-96
PROJ	TDM	11-15-96

AS-BUILT DRAWINGS



100 WEST WALNUT STREET
PASADENA, CALIFORNIA



CALIFORNIA INSTITUTE OF TECHNOLOGY
MASSACHUSETTS INSTITUTE OF TECHNOLOGY

LASER INTERFEROMETER
GRAVITATIONAL-WAVE OBSERVATORY
SITE NO. 2 - LIVINGSTON, LOUISIANA

TITLE	SCALE	CONTRACT NUMBER	PROJECT NUMBER
STRUCTURAL END STATIONS "A" & "B" AIR HANDLING UNIT ENCLOSURE PLANS	AS NOTED	PP150969	8094
SHEET NUMBER		REVISIONS	
LA-S-302			

REFERENCES	NO.	DATE	BY	CHKD	ENGR	PROJ	DESCRIPTION
	1	08-07-98	WA	BBM	BBM		ISSUED FOR AS-BUILT