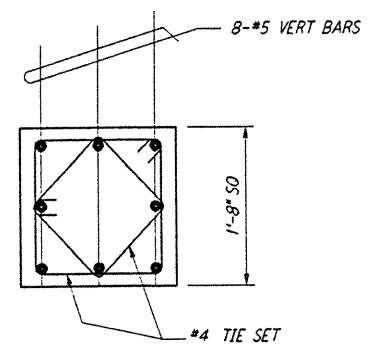


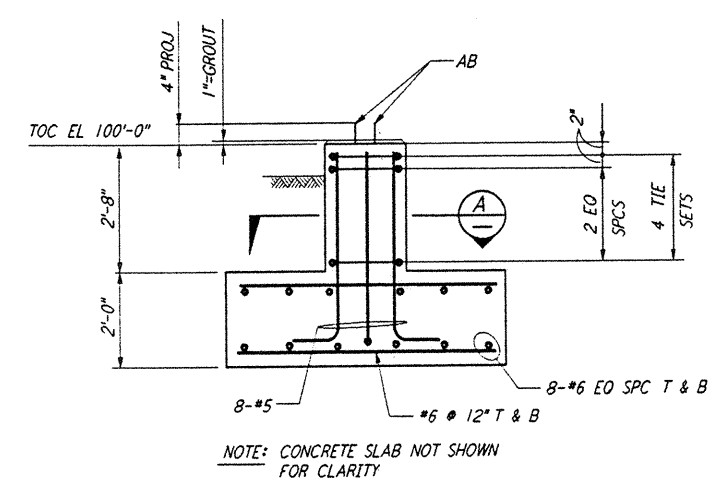
FOR FLOOR SLOPES AND FLOOR DRAINS
 SEE ARCHITECTURAL DWGS

DATUM POINT EL 100'-0" = EL 63.12'

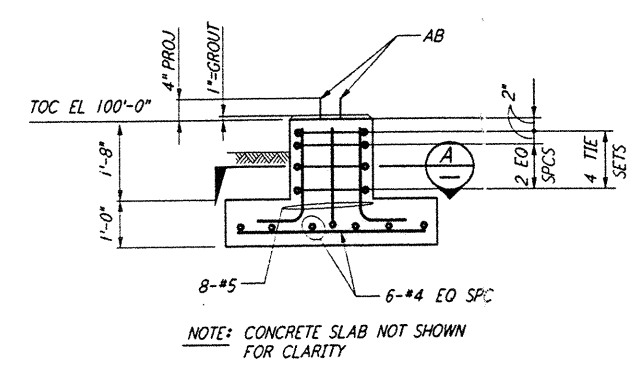
FOUNDATION PLAN
 1/4" = 1'-0"



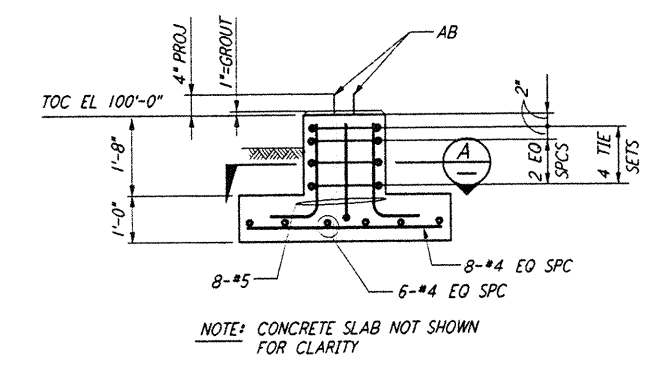
SECTION A
 1" = 1'-0"



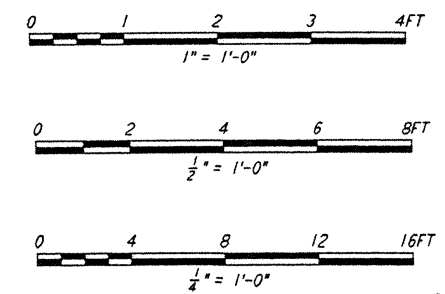
SECTION B
 1/2" = 1'-0"



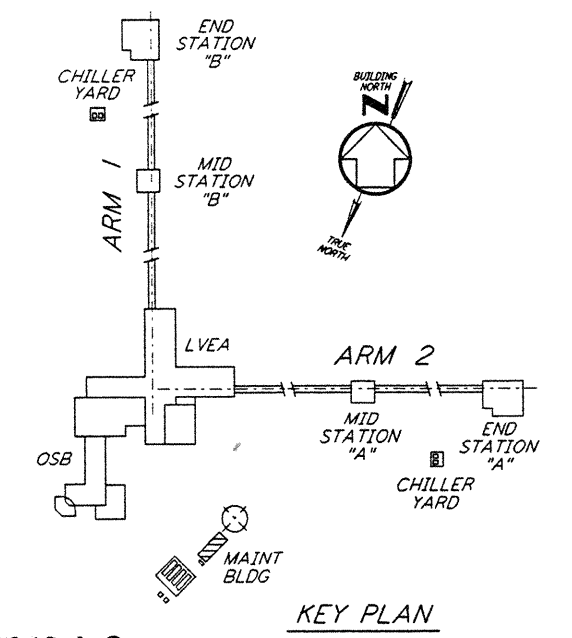
SECTION C
 1/2" = 1'-0"



SECTION D
 1/2" = 1'-0"



- NOTES:**
- FOR STRUCTURAL GENERAL NOTES, ABBREVIATIONS AND LEGEND SEE DWG. LA-S-001.
 - CONTRACTOR TO ADJUST LOCATION AND SIZE OF EQUIPMENT PADS TO SUIT VENDOR EQUIPMENT.
 - ALL VERTICAL SURFACES OF FOUNDATION SHALL BE FORMED.



LIGO-D960940-A-0

NO.	DATE	BY	CHKD	ENGR	PROJ	DESCRIPTION
A	6-14-96	MCS	PK	PK	PK	FINAL DESIGN REVIEW

DRAWN	PK
CHECKED	
ENGINEER	
PROJ	

PARSONS

100 WEST WALNUT STREET
 PASADENA, CALIFORNIA

LIGO

CALIFORNIA INSTITUTE OF TECHNOLOGY
 MASSACHUSETTS INSTITUTE OF TECHNOLOGY

LASER INTERFEROMETER
 GRAVITATIONAL-WAVE OBSERVATORY
 SITE NO. 2 - LIVINGSTON, LOUISIANA

TITLE: **STRUCTURAL MAINTENANCE BUILDING FDN PLAN & SECTIONS**

AS NOTED PPI50969 8094

SHEET NUMBER: **LA-S-124**

This document and the design it covers are the property of PARSONS. They are loaned only with the borrower's expressed written agreement that they will not be reproduced, copied, loaned, exhibited, or used in any other way, except by written consent from PARSONS to the borrower.

This document and the design it covers are the property of PARSONS. They are loaned only with the borrower's expressed written agreement that they will not be reproduced, copied, loaned, exhibited, or used in any other way, except by written consent from PARSONS to the borrower.

JUN 13 2004 11:16:35 AM C:\LIGO\PROJECTS\MAINTENANCE\BDR\ST124.DWG

JUN 13 2004 11:16:35 AM C:\LIGO\PROJECTS\MAINTENANCE\BDR\ST124.DWG