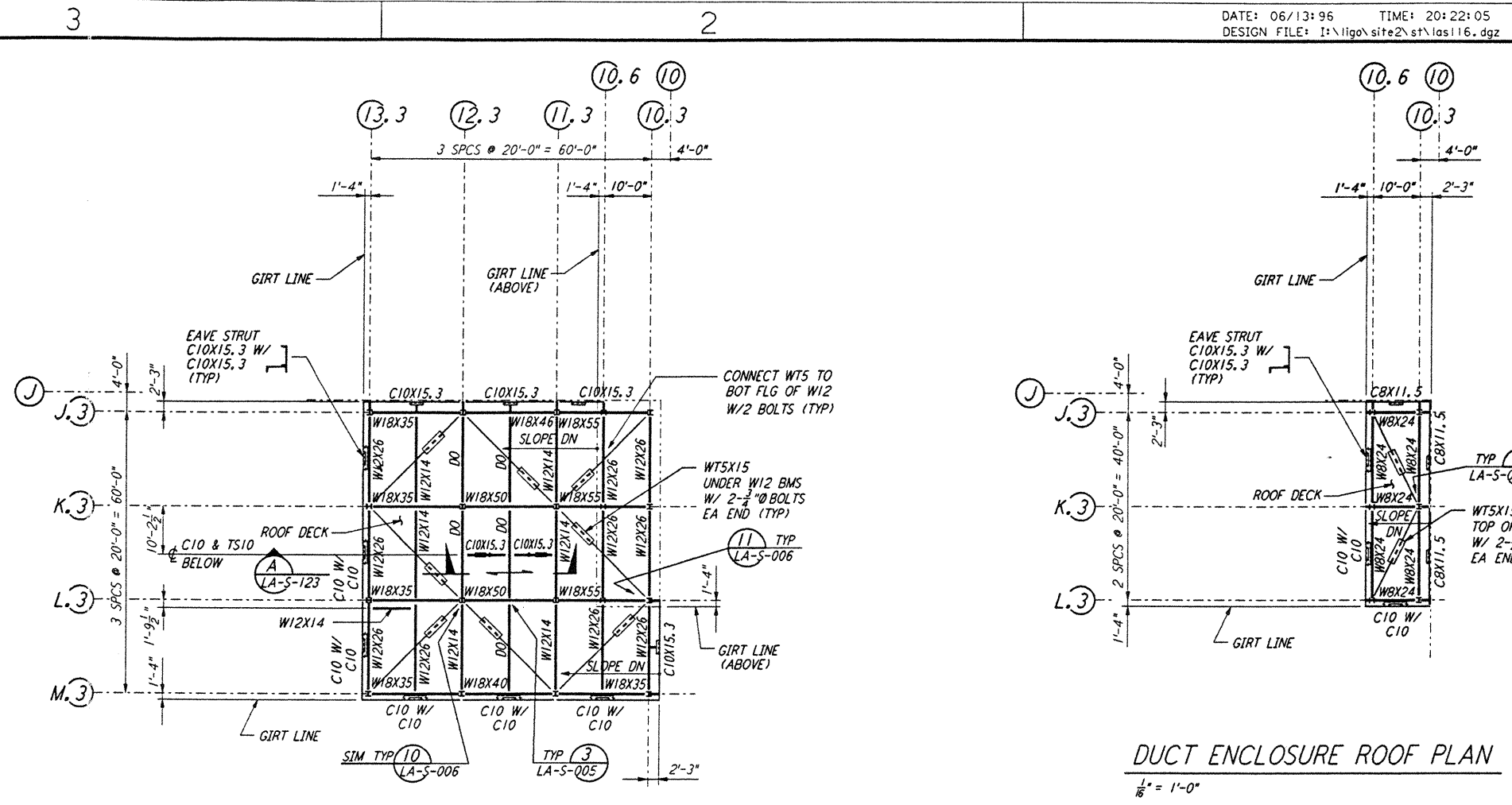
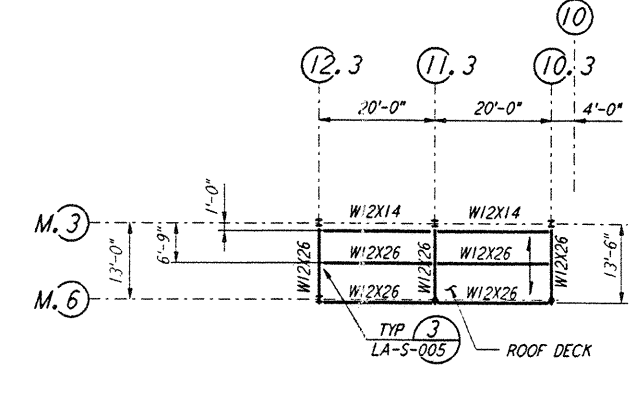


LOW ROOF FRAMING PLAN
 $\frac{1}{16}'' = 1'-0''$

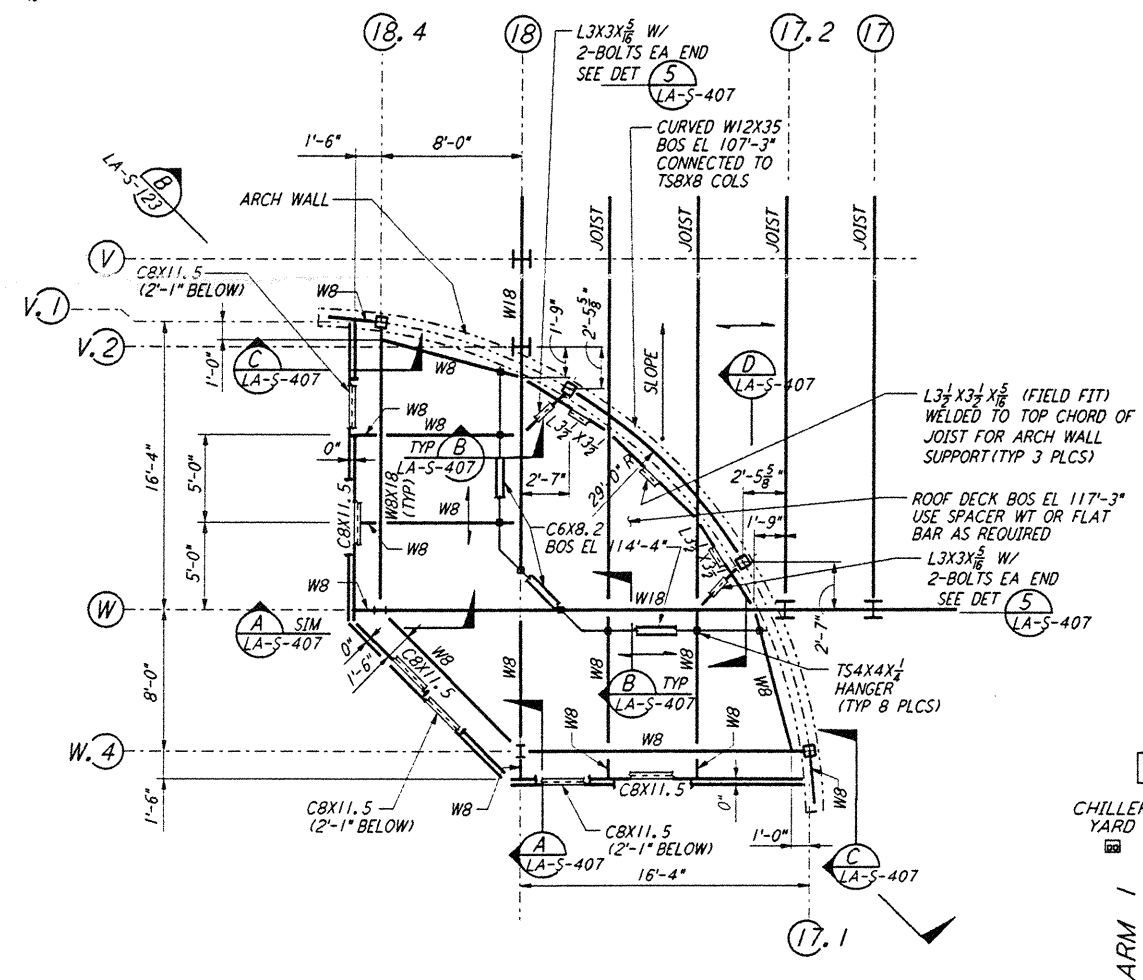


HIGH ROOF FRAMING PLAN
 $\frac{1}{8}'' = 1'-0''$

DUCT ENCLOSURE ROOF PLAN
 $\frac{1}{8}'' = 1'-0''$

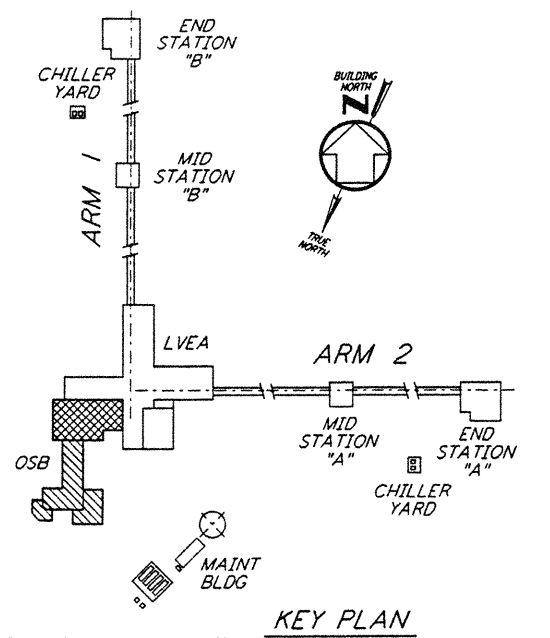
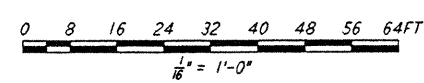


CANOPY FRAMING PLAN
 $\frac{1}{8}'' = 1'-0''$



ENLARGED FRAMING PLAN
 $\frac{1}{8}'' = 1'-0''$

NOTE:
 1. FOR STRUCTURAL GENERAL NOTES, ABBREVIATIONS AND LEGEND, SEE DWG LA-S-001.



KEY PLAN

This document and the design it covers are the property of PARSONS. They are loaned only with the borrower's expressed written agreement that they will not be reproduced, copied, loaned, exhibited, or used in any other way, except by written consent from PARSONS to the borrower.

NO.	DATE	BY	CHKD	ENGR	PROJ	DESCRIPTION
B	6-14-96	MCS				FINAL DESIGN REVIEW
A	10-31-95					PRELIMINARY DESIGN REVIEW

DRAWN	MCS
CHECKED	
ENGINEER	
PROJ	

PARSONS
 100 WEST WALNUT STREET
 PASADENA, CALIFORNIA

LIGO
 CALIFORNIA INSTITUTE OF TECHNOLOGY
 MASSACHUSETTS INSTITUTE OF TECHNOLOGY

LIGO-D960932-B-O
 LASER INTERFEROMETER
 GRAVITATIONAL-WAVE OBSERVATORY
 SITE NO. 2 - LIVINGSTON, LOUISIANA

STRUCTURAL
 CORNER STATION
 OSB ROOF FRAMING PLANS

AS NOTED PPI50969 8094
LA-S-116