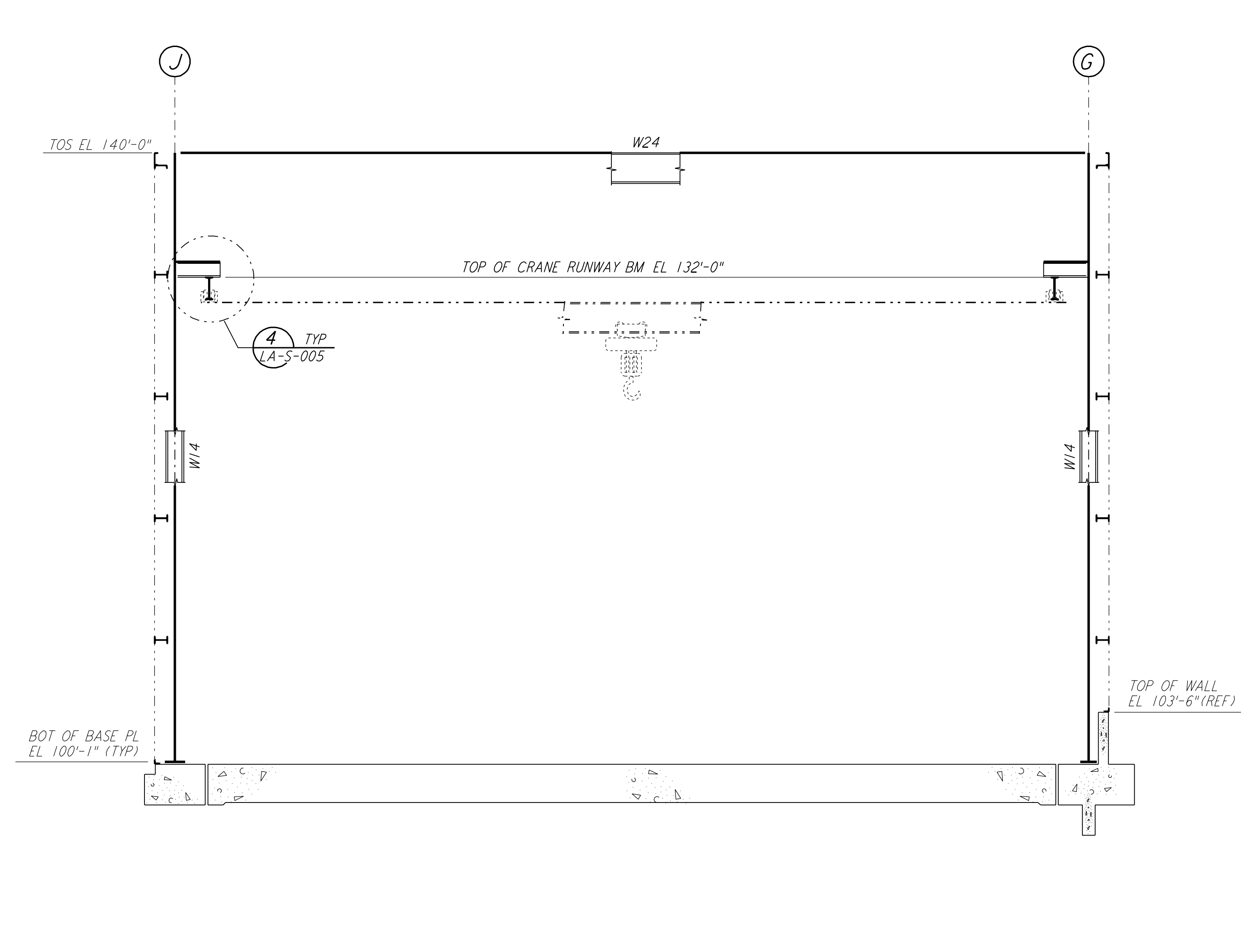
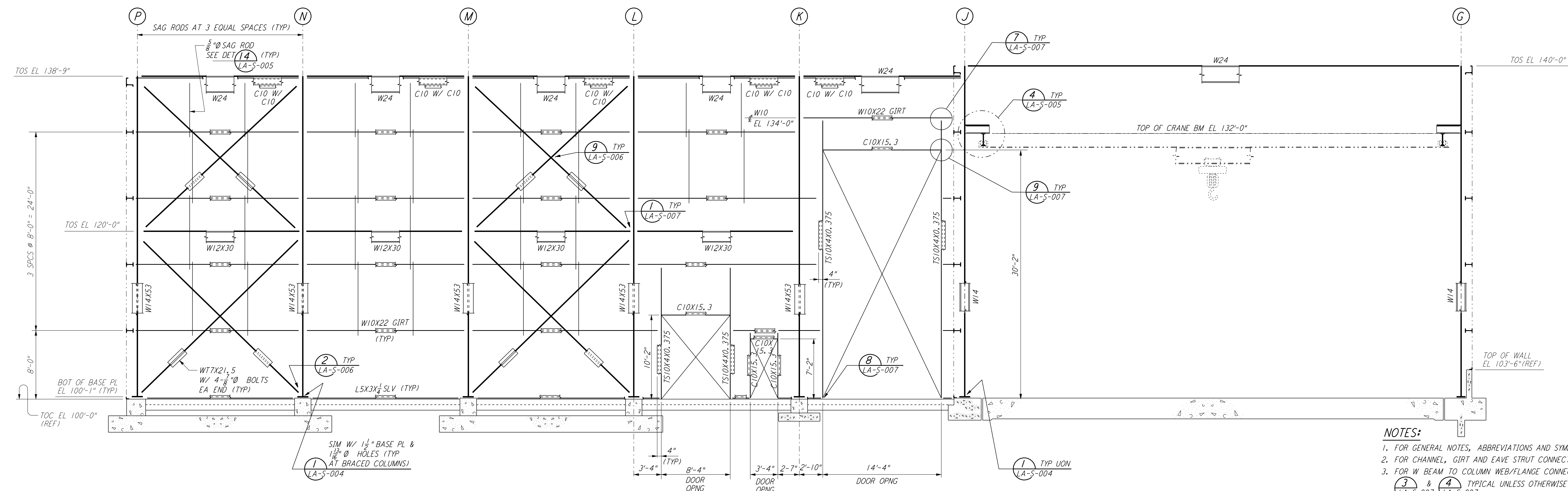


ELEVATION AT COLUMN LINE 1
 $\frac{3}{16}'' = 1'-0''$



ELEVATION AT COLUMN LINES 2, 3 & 4
 $\frac{3}{16}'' = 1'-0''$



ELEVATION AT COLUMN LINE 5
 $\frac{3}{16}'' = 1'-0''$

LIGO-D960923-02-O

- NOTES:**
- FOR GENERAL NOTES, ABBREVIATIONS AND SYMBOLS SEE DRAWING LA-S-001.
 - FOR CHANNEL, GIRT AND EAVE STRUT CONNECTION DETAILS SEE DRAWING LA-S-005.
 - FOR W BEAM TO COLUMN WEB/FLANGE CONNECTIONS, SEE DETAILS (6) LA-S-004 & (3) LA-S-007 TYPICAL UNLESS OTHERWISE NOTED.
 - FOR BASE ANGLE (LSX3) CONNECTIONS, SEE SECTION (A) LA-S-003.
 - FOR LOCATION OF INTERIOR ROOLED-UP DOORS SEE DETAIL (6) LA-S-007.
 - TRIM VERTICAL BRACING W/7 STEM AS REQUIRED (1/2" X 12" APPROX) AT GIRT LOCATION TO CLEAR GIRTS. PROVIDE 2 1/2" TO 1" TRANSITION AT ENDS OF CUT.

This document and the design it covers are the property of PARSONS. They are loaned only with the borrower's expressed written agreement that they will not be reproduced, copied, loaned, exhibited, or used in any other way, except by written consent from PARSONS to the borrower.

This document and the design it covers are the property of PARSONS. They are loaned only with the borrower's expressed written agreement that they will not be reproduced, copied, loaned, exhibited, or used in any other way, except by written consent from PARSONS to the borrower.

NO.	DATE	BY	CHKD	ENGR	PROJ	DESCRIPTION
2	08-07-98	IWA				ISSUED FOR AS-BUILT
1	2-28-97	RM	AB	BP		ADDED DET REF AT ELEV LN 1

ISSUED FOR CONSTRUCTION

DRAWN	MCS	11-15-96
CHECKED	DDM	11-15-96
ENGINEER	BP	11-15-96
PROJ	TDM	11-15-96

AS-BUILT DRAWINGS

100 WEST WALNUT STREET
PASADENA, CALIFORNIA

CALIFORNIA INSTITUTE OF TECHNOLOGY
MASSACHUSETTS INSTITUTE OF TECHNOLOGY

LASER INTERFEROMETER
GRAVITATIONAL-WAVE OBSERVATORY
SITE NO. 2 - LIVINGSTON, LOUISIANA

TITLE	STRUCTURAL CORNER STATION LVEA FRAMING ELEVATIONS SHEET 1	SCALE	AS NOTED	CONTRACT NUMBER	PP150969	PROJECT NUMBER	8094
SHEET NUMBER	LA-S-107	REVISIONS					