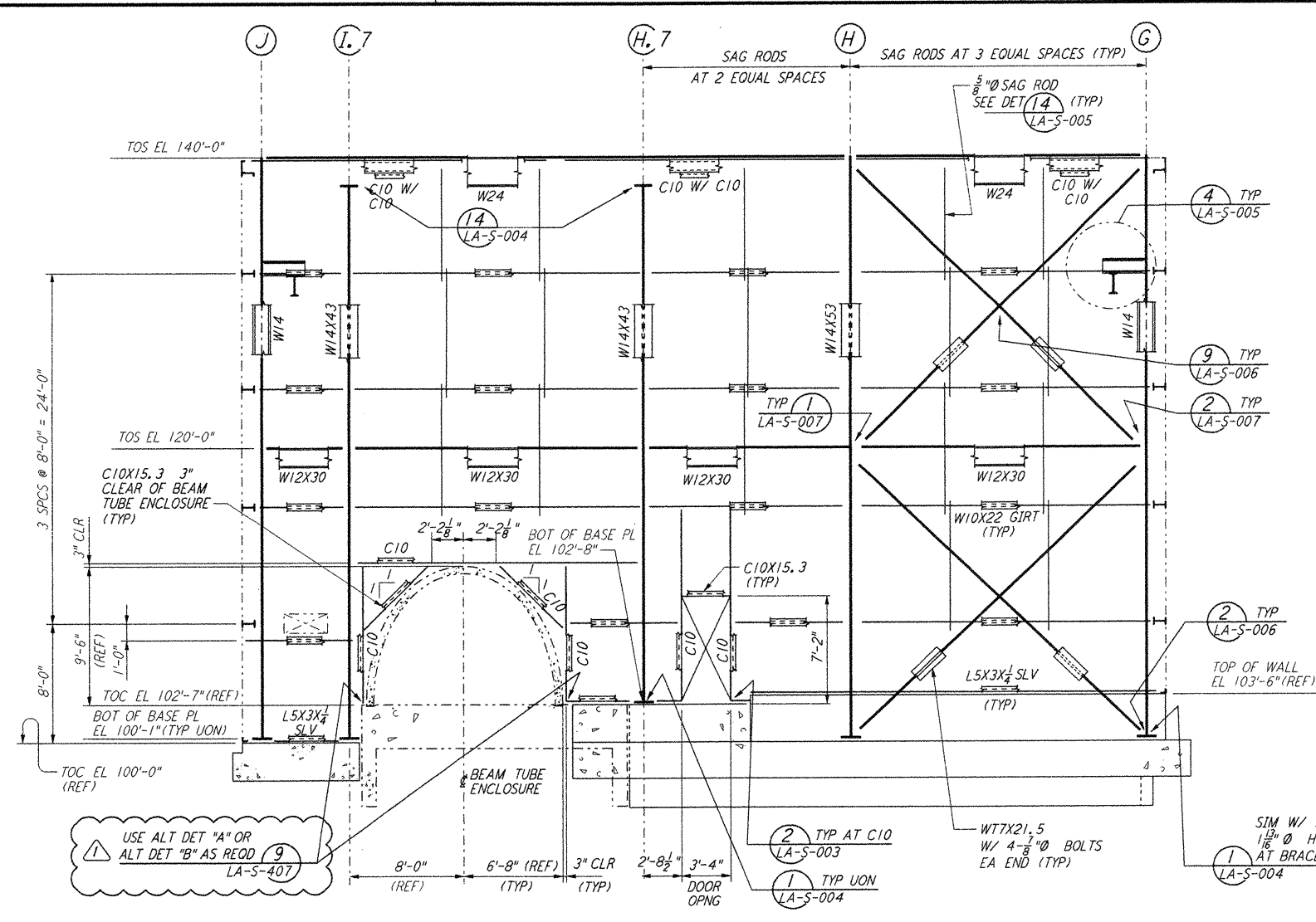
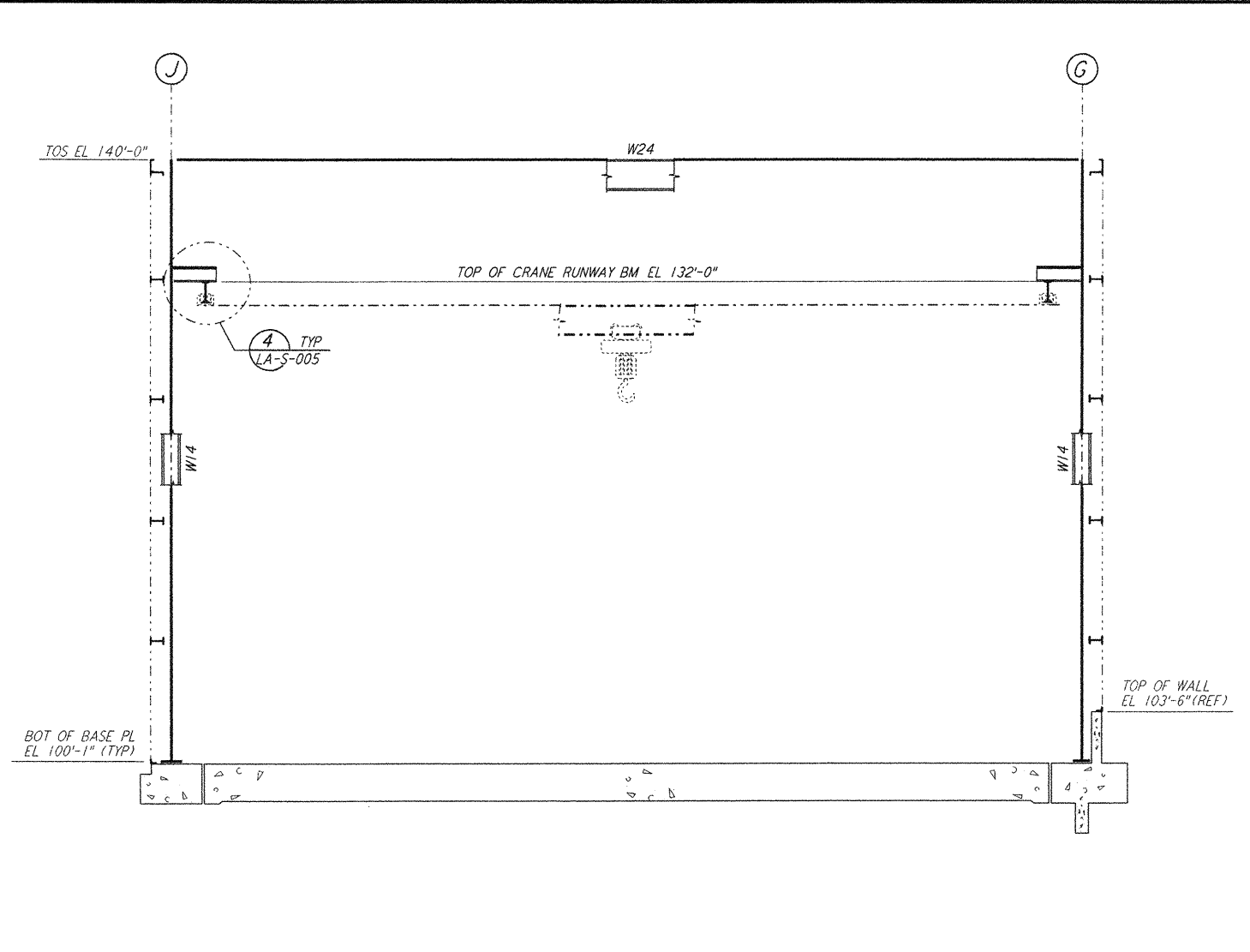


This document and the design it covers are the property of PARSONS. They are loaned only with the borrower's expressed written agreement that they will not be reproduced, copied, loaned, exhibited, or used in any other way, except by written consent from PARSONS to the borrower.

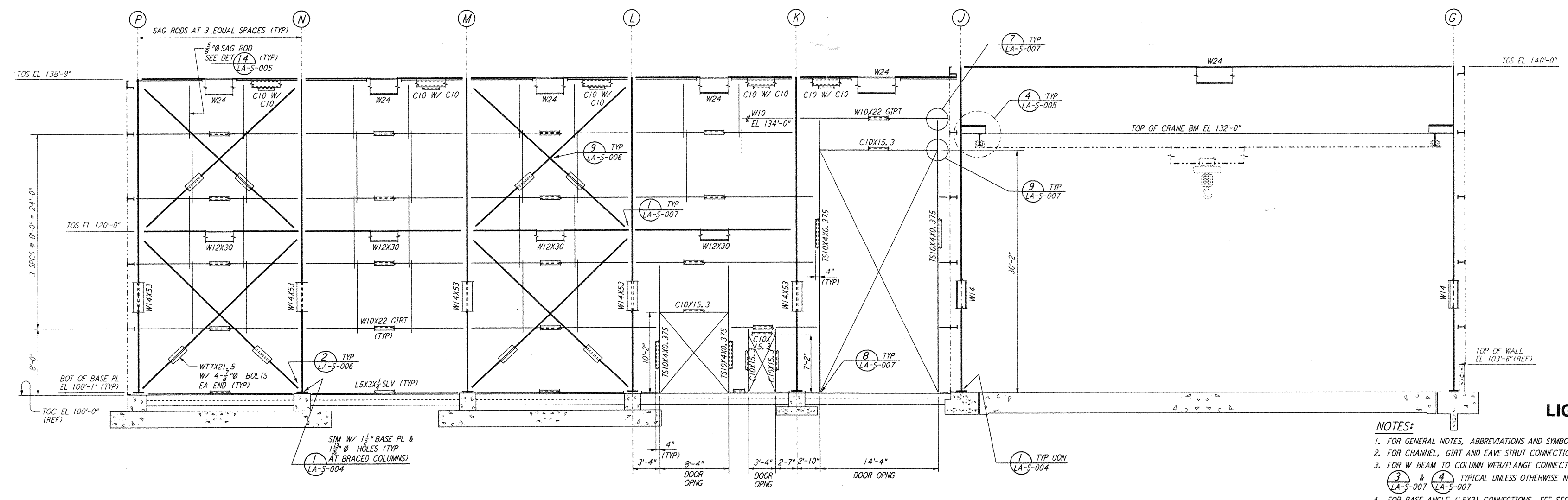
This document and the design it covers are the property of PARSONS. They are loaned only with the borrower's expressed written agreement that they will not be reproduced, copied, loaned, exhibited, or used in any other way, except by written consent from PARSONS to the borrower.



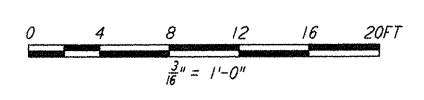
ELEVATION AT COLUMN LINE 1
 $\frac{1}{8}'' = 1'-0''$



ELEVATION AT COLUMN LINES 2, 3 & 4
 $\frac{1}{8}'' = 1'-0''$



ELEVATION AT COLUMN LINE 5
 $\frac{1}{8}'' = 1'-0''$



- NOTES:**
- FOR GENERAL NOTES, ABBREVIATIONS AND SYMBOLS SEE DRAWING LA-S-001.
 - FOR CHANNEL, GIRT AND EAVE STRUT CONNECTION DETAILS SEE DRAWING LA-S-005.
 - FOR W BEAM TO COLUMN WEB/FLANGE CONNECTIONS, SEE DETAILS (6) & (4) LA-S-007 & (4) LA-S-004 TYPICAL UNLESS OTHERWISE NOTED.
 - FOR BASE ANGLE (LSX3) CONNECTIONS, SEE SECTION (A) LA-S-003.
 - FOR LOCATION OF INTERIOR ROOLED-UP DOORS SEE DETAIL (6) LA-S-007.
 - TRIM VERTICAL BRACING W/IT STEM AS REQUIRED ($\frac{1}{8}'' \times 12''$ APPROX) AT GIRT LOCATION TO CLEAR GIRTS. PROVIDE $2\frac{1}{2}''$ TO 1" TRANSITION AT ENDS OF CUT.

LIGO-D960923-02-0

NO.	DATE	BY	CHKD	ENGR	PROJ	DESCRIPTION
2	08-07-98	WA	BP	BP	WVU	ISSUED FOR AS-BUILT
1	2-28-97	RM	AB	BP		ADDED DET REF AT ELEV LN 1

ISSUED FOR CONSTRUCTION
 DRAWN: MCS 11-15-96
 CHECKED: DDM 11-15-96
 ENGINEER: BP 11-15-96
 PROJ: TDM 11-15-96

AS-BUILT DRAWINGS

PARSONS
 100 WEST WALNUT STREET
 PASADENA, CALIFORNIA

LIGO
 CALIFORNIA INSTITUTE OF TECHNOLOGY
 MASSACHUSETTS INSTITUTE OF TECHNOLOGY

LASER INTERFEROMETER
 GRAVITATIONAL-WAVE OBSERVATORY
 SITE NO. 2 - LIVINGSTON, LOUISIANA

SCALE: AS NOTED
 SHEET NUMBER: PP150969
 PROJECT NUMBER: 8094

STRUCTURAL CORNER STATION
 LVEA FRAMING ELEVATIONS
 SHEET 1

LA-S-107