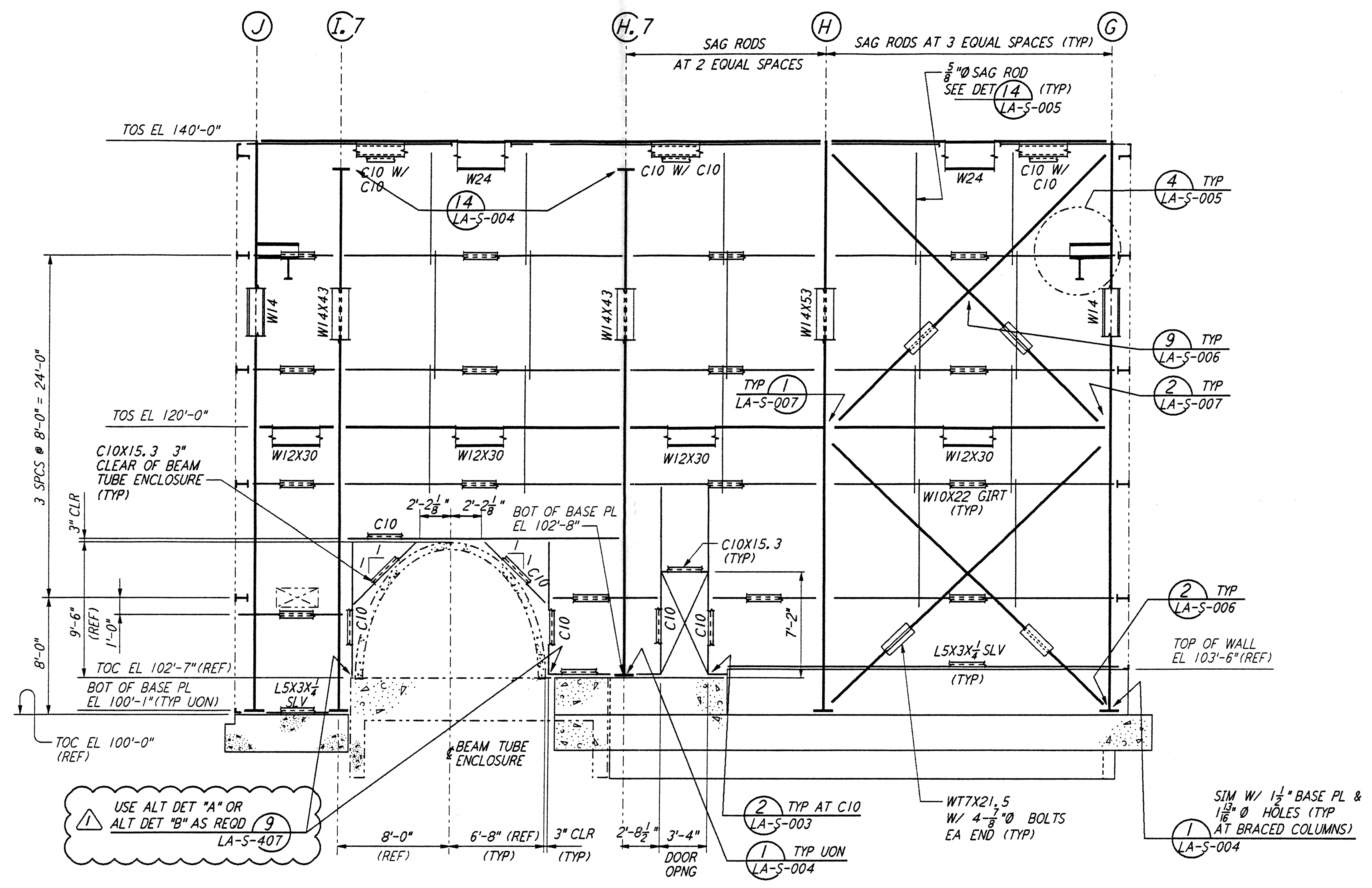
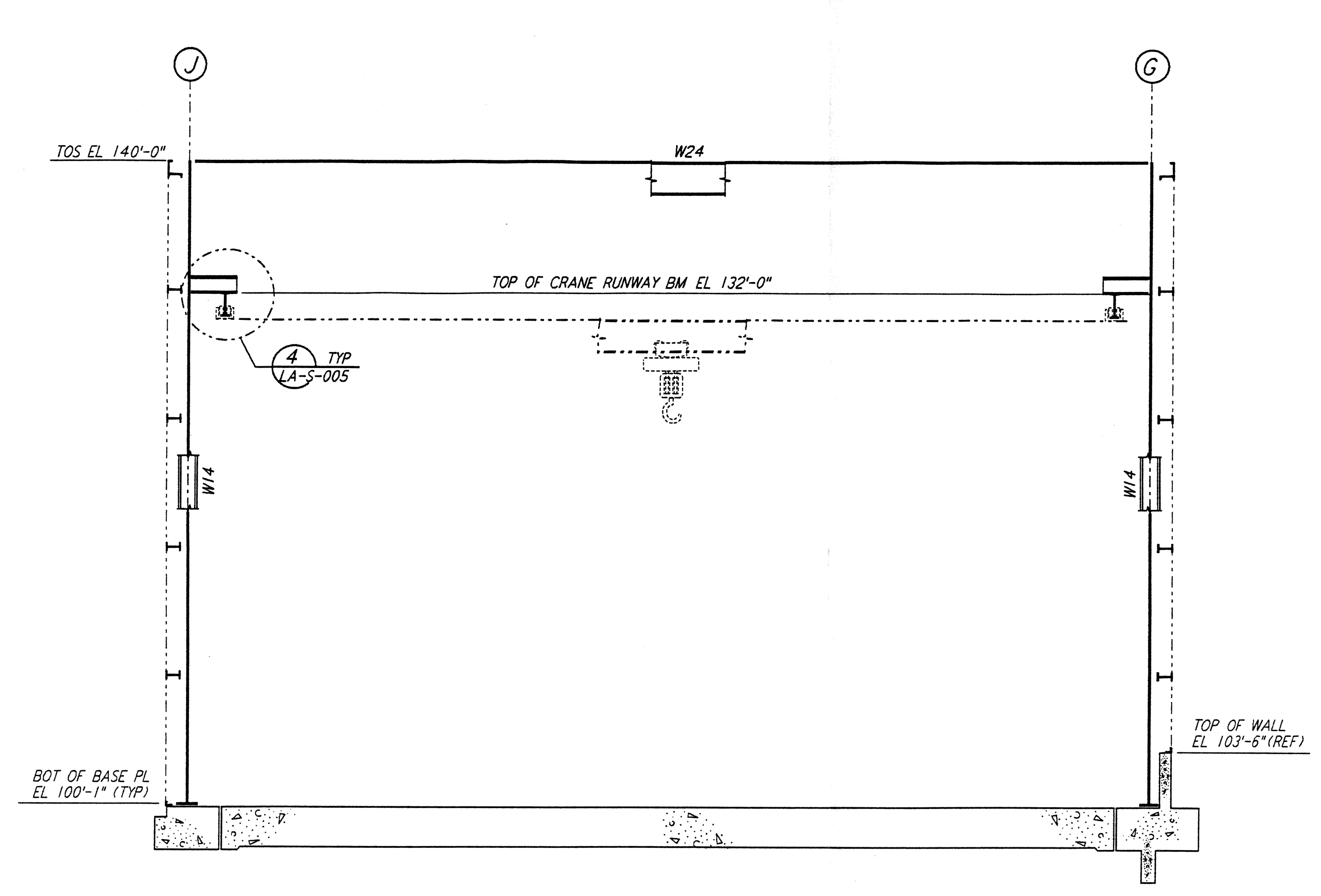


This document and the design it covers are the property of PARSONS. They are loaned only with the borrower's expressed written agreement that they will not be reproduced, copied, loaned, exhibited, or used in any other way, except by written consent from PARSONS to the borrower.

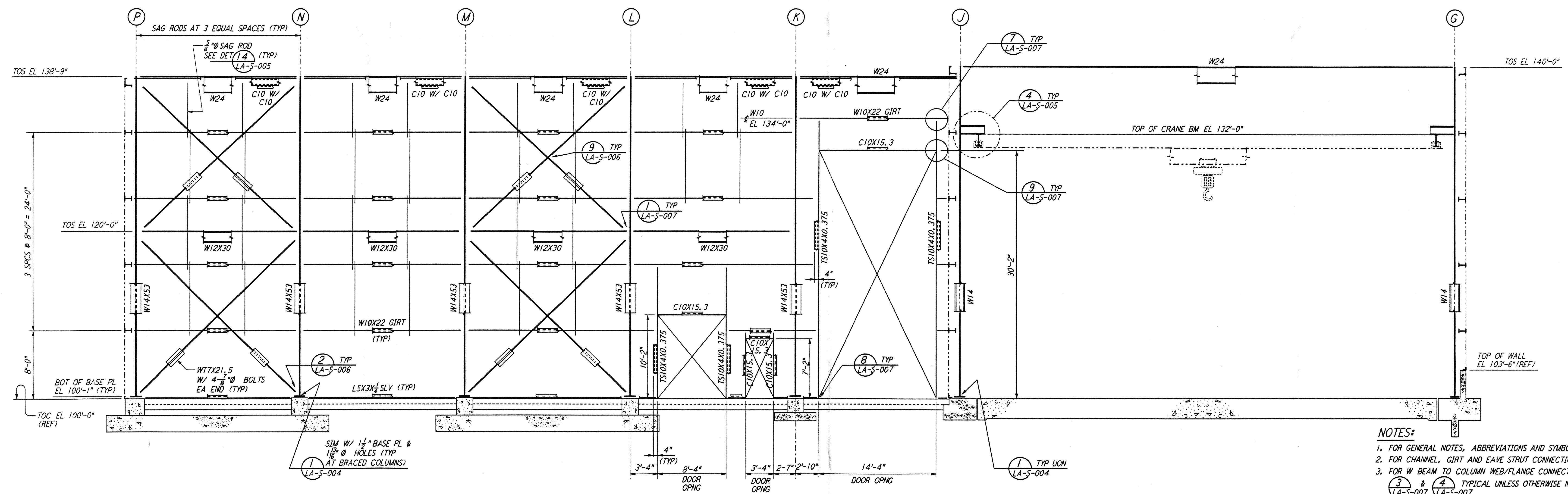
This document and the design it covers are the property of PARSONS. They are loaned only with the borrower's expressed written agreement that they will not be reproduced, copied, loaned, exhibited, or used in any other way, except by written consent from PARSONS to the borrower.



ELEVATION AT COLUMN LINE 1  
 $\frac{3}{8}'' = 1'-0''$

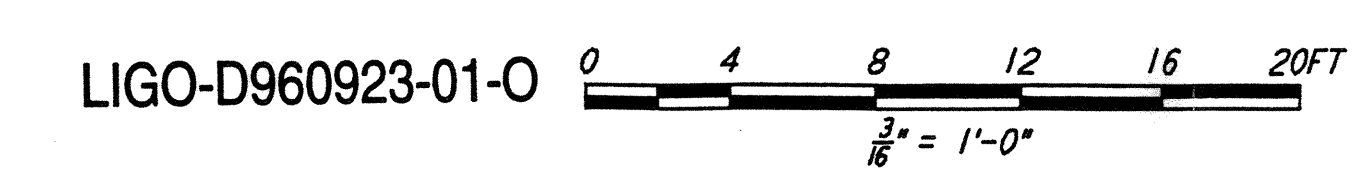


ELEVATION AT COLUMN LINES 2, 3 & 4  
 $\frac{3}{8}'' = 1'-0''$



ELEVATION AT COLUMN LINE 5  
 $\frac{3}{8}'' = 1'-0''$

- NOTES:**
- FOR GENERAL NOTES, ABBREVIATIONS AND SYMBOLS SEE DRAWING LA-S-001.
  - FOR CHANNEL, GIRT AND EAVE STRUT CONNECTION DETAILS SEE DRAWING LA-S-005.
  - FOR W BEAM TO COLUMN WEB/FLANGE CONNECTIONS, SEE DETAILS (3) & (4) TYPICAL UNLESS OTHERWISE NOTED.
  - FOR BASE ANGLE (LSX3) CONNECTIONS, SEE SECTION (A) LA-S-003.
  - FOR LOCATION OF INTERIOR ROOLED-UP DOORS SEE DETAIL (6) LA-S-007.
  - TRIM VERTICAL BRACING W/7 STEM AS REQUIRED ( $\frac{1}{2}'' \times 12''$  APPROX) AT GIRT LOCATION TO CLEAR GIRTS. PROVIDE  $2\frac{1}{2}''$  TO 1 TRANSITION AT ENDS OF CUT.



NO.	DATE	BY	CHKD	ENGR	PROJ	DESCRIPTION
1	2-28-97	RM	PE	PK		ADDED DET REF AT ELEV LN 1

ISSUED FOR CONSTRUCTION	DRAWN	MCS	11-15-96
CHECKED	DDM	11-15-96	
ENGINEER	BP	11-15-96	
PROJ	TDM	11-15-96	



**PARSONS**  
 100 WEST WALNUT STREET  
 PASADENA, CALIFORNIA

**LIGO**  
 CALIFORNIA INSTITUTE OF TECHNOLOGY  
 MASSACHUSETTS INSTITUTE OF TECHNOLOGY

LASER INTERFEROMETER  
 GRAVITATIONAL-WAVE OBSERVATORY  
 SITE NO. 2 - LIVINGSTON, LOUISIANA

TITLE: STRUCTURAL CORNER STATION LVEA FRAMING ELEVATIONS SHEET 1

SCALE: AS NOTED CONTRACT NUMBER: PPI 50969 PROJECT NUMBER: 8094

SHEET NUMBER: LA-S-107