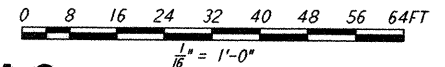
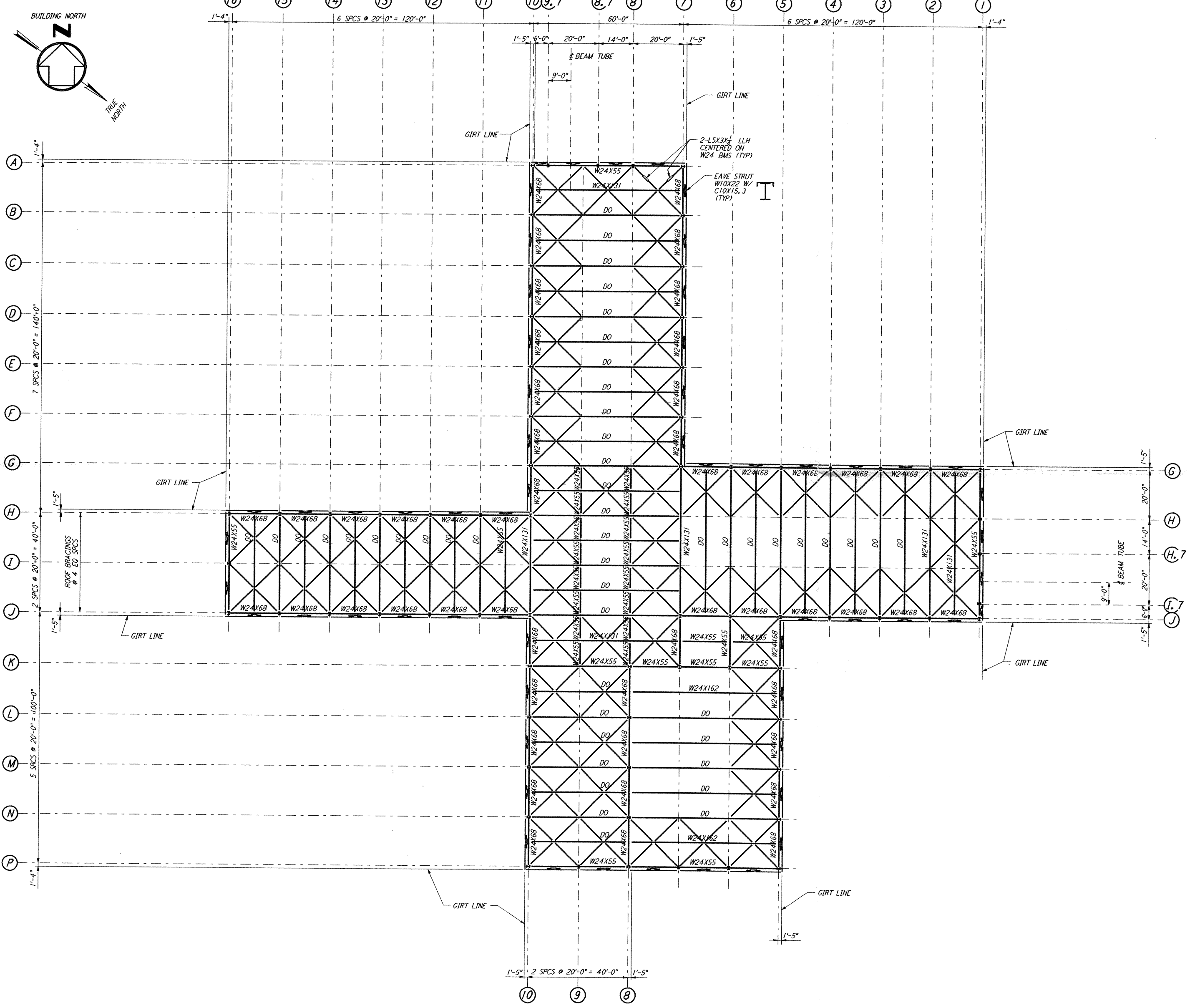


This document and the design it covers are the property of PARSONS. They are loaned only with the borrower's expressed written agreement that they will not be reproduced, copied, loaned, exhibited, or used in any other way, except by written consent from PARSONS to the borrower.



LIGO-D960922-A-0

9					
8					
7					
6					
5					
4					
3					
2					
1					
NO.	DATE	APRD BY	DESCRIPTION OF REVISION	NO.	DATE

DATE	10-31-95
DRAWN	MCS
CHECKED	
ENGINEER	
PROJ MGR	

ISSUE			
A	10-31-95	TDM	PRELIMINARY DESIGN REVIEW
B			
C			
D			
E			
F			
G			
H			
J			

PARSONS
 100 WEST WALNUT STREET
 PASADENA, CALIFORNIA

LIGO
 CALIFORNIA INSTITUTE OF TECHNOLOGY
 MASSACHUSETTS INSTITUTE OF TECHNOLOGY

LASER INTERFEROMETER
 GRAVITATIONAL-WAVE OBSERVATORY
 SITE NO. 2 - LIVINGSTON, LOUISIANA

CORNER STATION (LVEA)
 ROOF FRAMING PLAN

AS NOTED PP150969 8094
LA-S-106