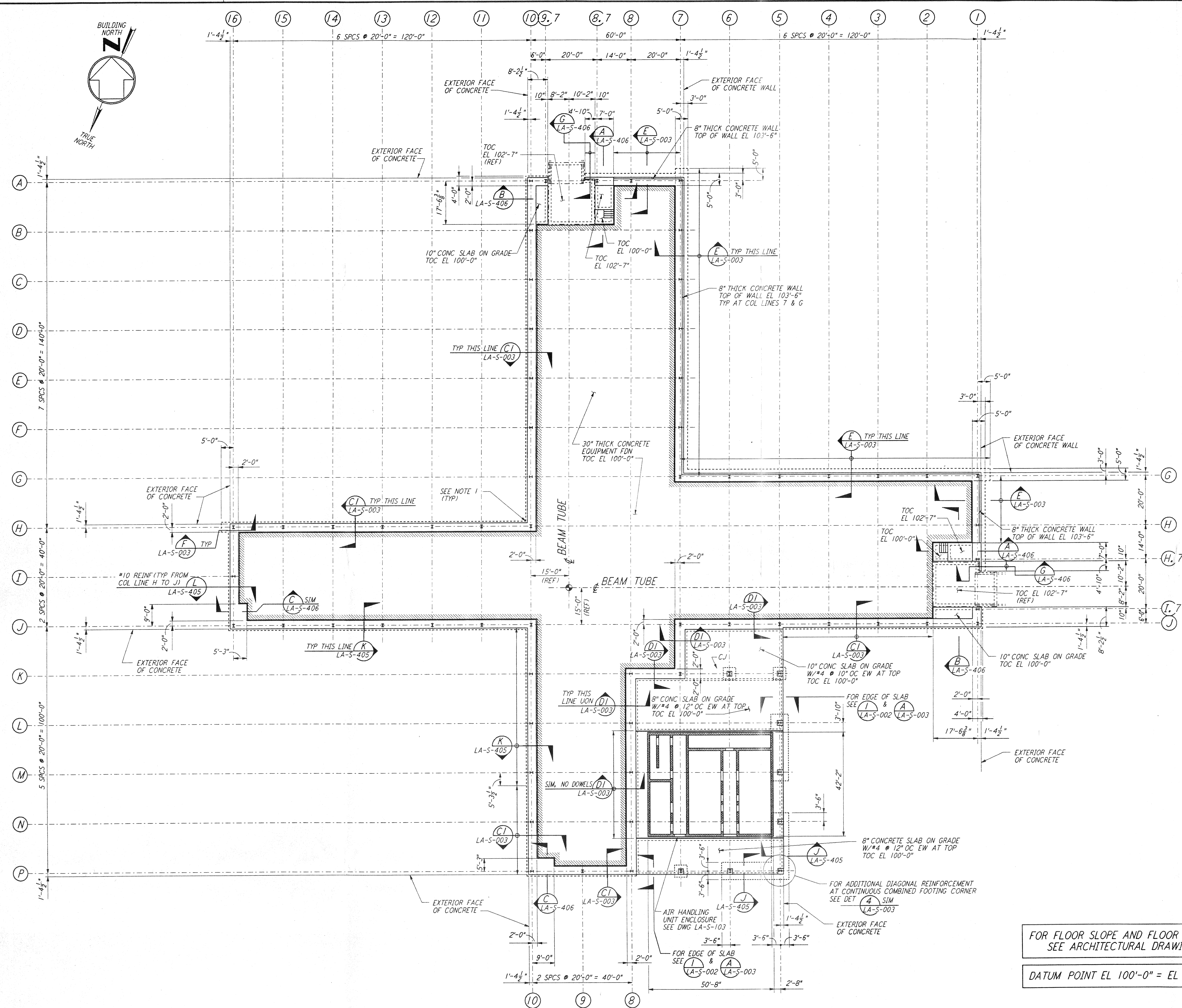
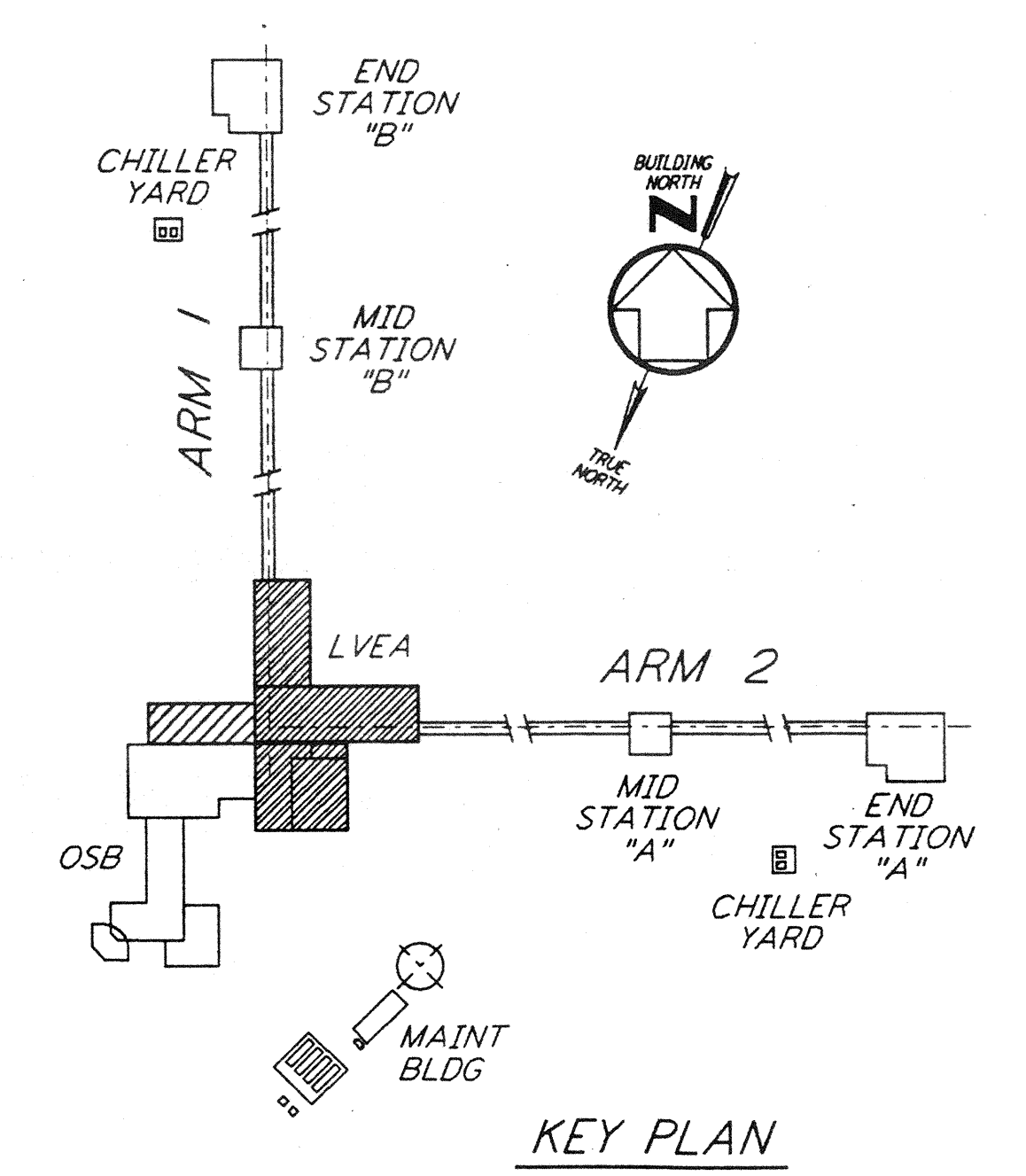


This document and the design it covers are the property of PARSONS. They are loaned only with the borrower's expressed written agreement that they will not be reproduced, copied, loaned, exhibited, or used in any other way, except by written consent from PARSONS to the borrower.



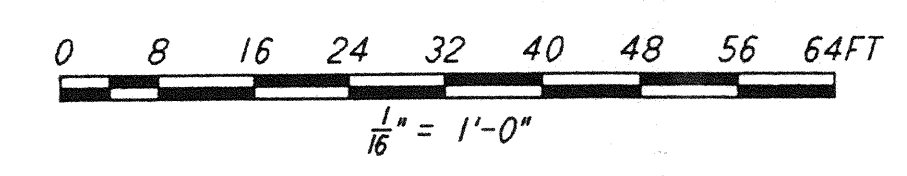
- EQUIPMENT FOUNDATION NOTES:**
- CONCRETE FOR EQUIPMENT FOUNDATION SHALL BE PLACED IN MULTIPLE LIFTS OF ONE (1) FOOT OR MORE WITH A FINAL LIFT OF SIX (6) INCHES.
 - FIBERMESH FIBERS (MANUFACTURED BY FIBERMESH, CHATTANOOGA, TENNESSEE OR EQUAL) SHALL BE MIXED WITH CONCRETE FOR THE FINAL LIFT OF SIX (6) INCHES FOR THE EQUIPMENT FOUNDATION.
 - CONCRETE SURFACE SHALL BE CLEANED, RAKED AND ROUGHENED TO DEVELOPE BOND BETWEEN CONCRETE LAYERS.
 - TOP REINFORCEMENT OF EQUIPMENT FOUNDATION SHALL HAVE 1/2" CLEAR COVER. CONTRACTOR SHALL TAKE ALL THE NECESSARY PRECAUTIONS TO MAINTAIN UNIFORM COVER.
 - CONTRACTOR SHALL USE FOUR (4) SETS OF EQUIPMENTS AND CREWS TO PLACE LVEA EQUIPMENT FOUNDATION FROM FOUR (4) ENDS SIMULTANEOUSLY. CONTRACTOR SHALL HAVE SPARE PUMPS TO ENSURE UNINTERRUPTED PLACEMENT OF CONCRETE.
 - EQUIPMENT FOUNDATION SHALL BE CURED BY MEMBRANE CURING METHOD AS PER SPECIFICATIONS.

- NOTES:**
- FOR ADDITIONAL REINFORCEMENT AT 90° FOUNDATION DIRECTION CHANGES IN STRIP FOOTING SEE DETAIL (A) SIM. LA-S-003
 - FOR GENERAL NOTES, ABBREVIATIONS & SYMBOLS SEE DRAWING LA-S-001.
 - FOR SLAB ON GRADE DETAILS SEE DRAWING LA-S-002.
 - FOR BASE ANGLE AT EDGE OF SLAB OR TOP OF 8" CONCRETE WALL, SEE FRAMING ELEVATIONS AND DETAIL (A) LA-S-003
 - FOR FOUNDATION SCHEDULE AND DETAILS SEE DRAWING LA-S-404.
 - ALL VERTICAL SURFACES OF FOUNDATION SHALL BE FORMED EXCEPT AT SHEAR KEYS.



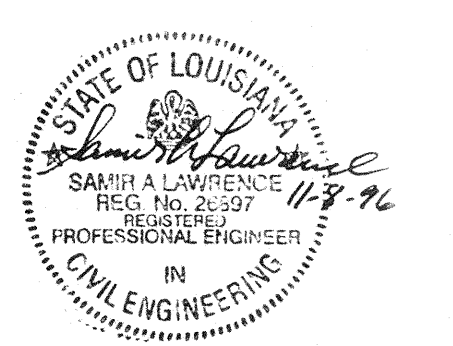
FOR FLOOR SLOPE AND FLOOR DRAINS
 SEE ARCHITECTURAL DRAWINGS

DATUM POINT EL 100'-0" = EL 61.44'



CORNER STATION FOUNDATION PLAN
 1/16" = 1'-0"

| | |
|-------------------------|--------------|
| ISSUED FOR CONSTRUCTION | |
| DRAWN | MCS 11-15-96 |
| CHECKED | DBM 11-15-96 |
| ENGINEER | HP 11-15-96 |
| PRJ | SPM 11/15/96 |



100 WEST WALNUT STREET
 PASADENA, CALIFORNIA



CALIFORNIA INSTITUTE OF TECHNOLOGY
 MASSACHUSETTS INSTITUTE OF TECHNOLOGY

LASER INTERFEROMETER
 GRAVITATIONAL-WAVE OBSERVATORY
 SITE NO. 2 - LIVINGSTON, LOUISIANA

| | | | |
|--|-----------------|-----------------|----------------|
| TITLE | SCALE | CONTRACT NUMBER | PROJECT NUMBER |
| STRUCTURAL CORNER STATION LVEA FOUNDATION PLAN | AS NOTED | PPI 50969 | 8094 |
| | SHEET NUMBER | REVISIONS | |
| | LA-S-101 | | |

| NO. | DATE | BY | CHKD | ENGR | PROJ | DESCRIPTION |
|-----|------|----|------|------|------|-------------|
| | | | | | | |
| | | | | | | |
| | | | | | | |
| | | | | | | |