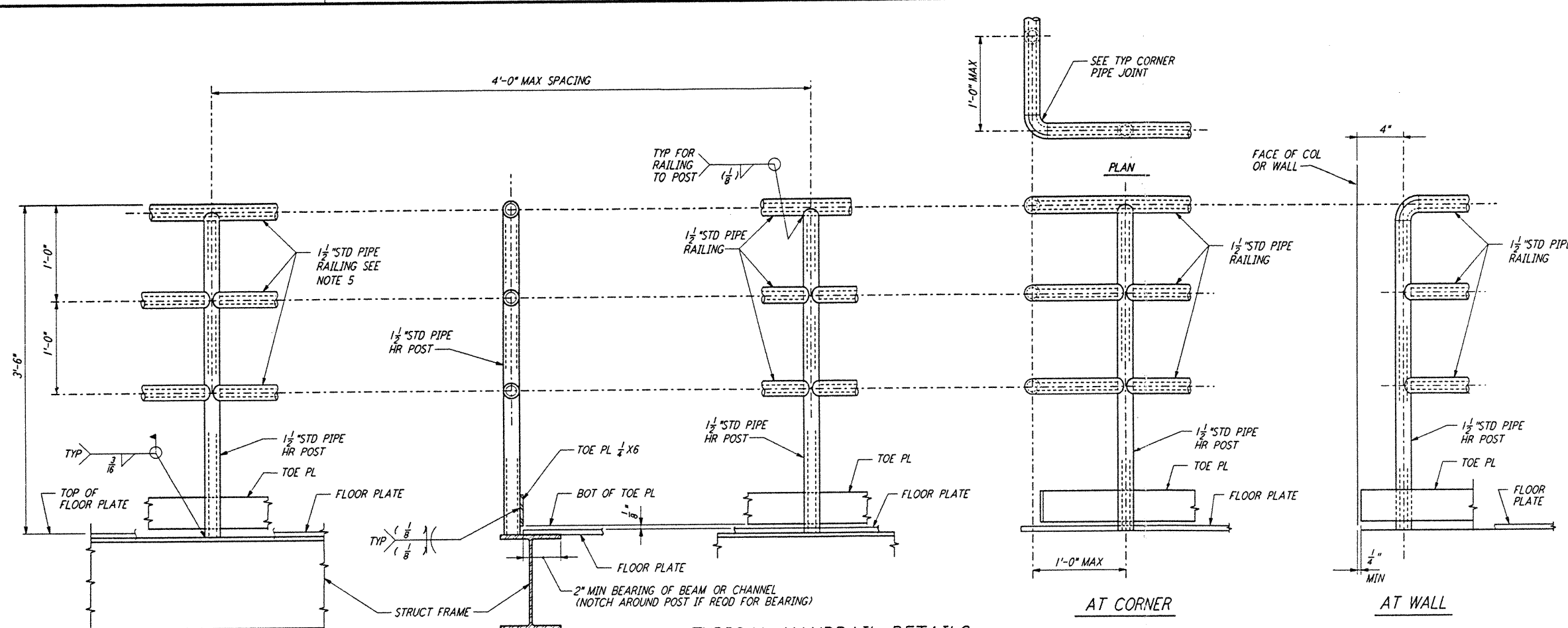
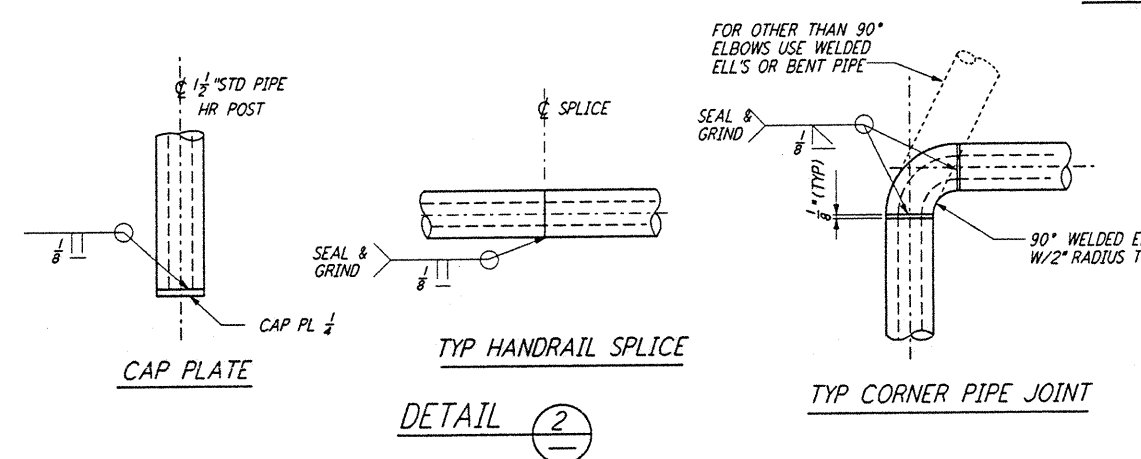


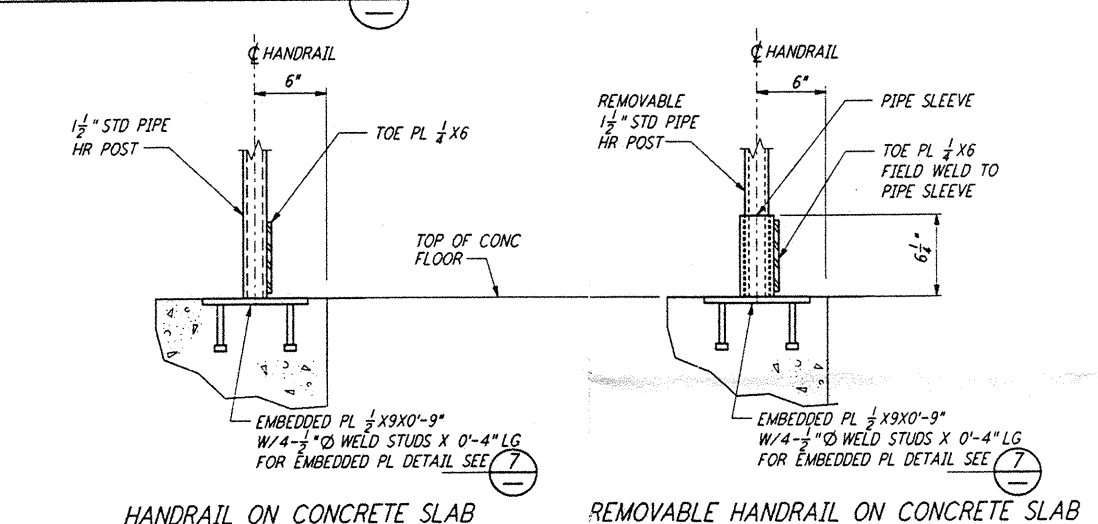
- NOTES:**
- FOR GENERAL NOTES, ABBREVIATIONS AND SYMBOLS SEE DRAWING LA-S-001.
 - SEE DESIGN DRAWINGS FOR STRUCTURAL MEMBER SIZE AND DIMENSIONS.
 - ALL EXPOSED SHARP EDGES AND CORNERS SHALL BE GROUND SMOOTH.
 - GALVANIZED MEMBER TO BE FIELD WELDED SHALL BE LEFT UNGALVANIZED A DISTANCE OF ONE INCH FROM AREA OF WELDING. THESE AREAS SHALL BE PAINTED WITH GALVANIZE COATING AFTER WELDING.
 - SHOP-WELDED HANDRAIL SECTIONS SHALL NOT EXCEED 20'-0" IN LENGTH.
 - ALL MISCELLANEOUS STEEL SHOWN ON THIS DRAWING SHALL BE GALVANIZED UNLESS OTHERWISE NOTED ON DESIGN DRAWINGS.
 - PROVIDE CLOSURE PL BETWEEN STAIR TREADS.



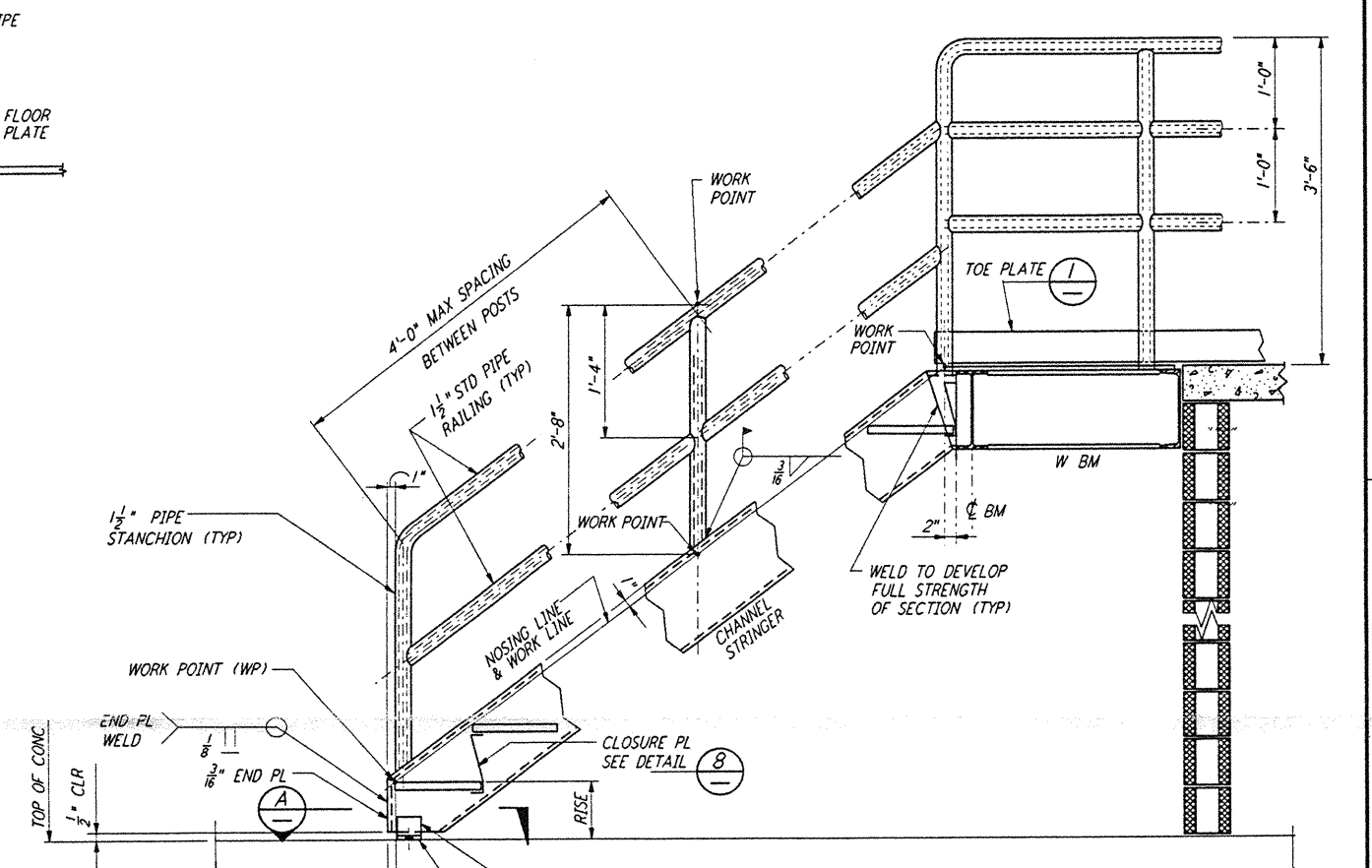
TYPICAL HANDRAIL DETAILS



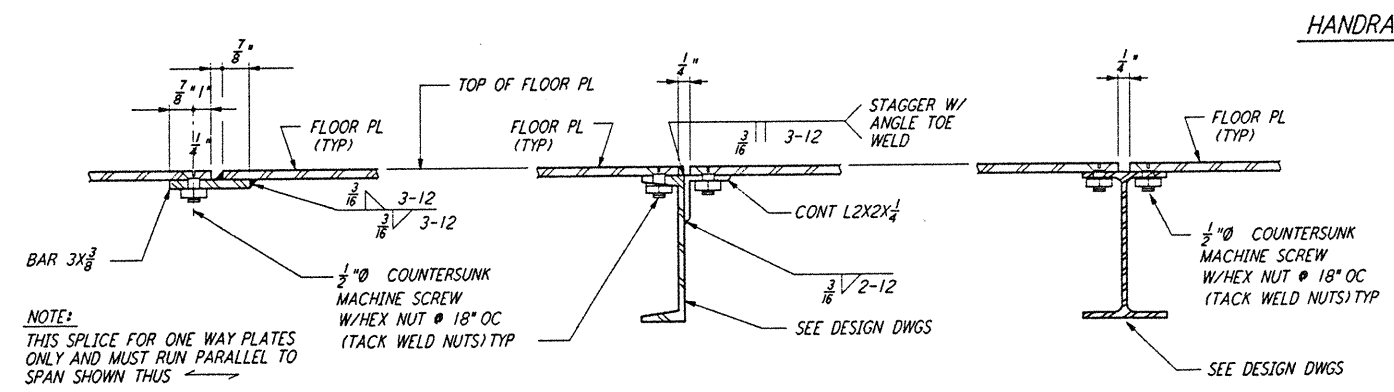
DETAIL 2



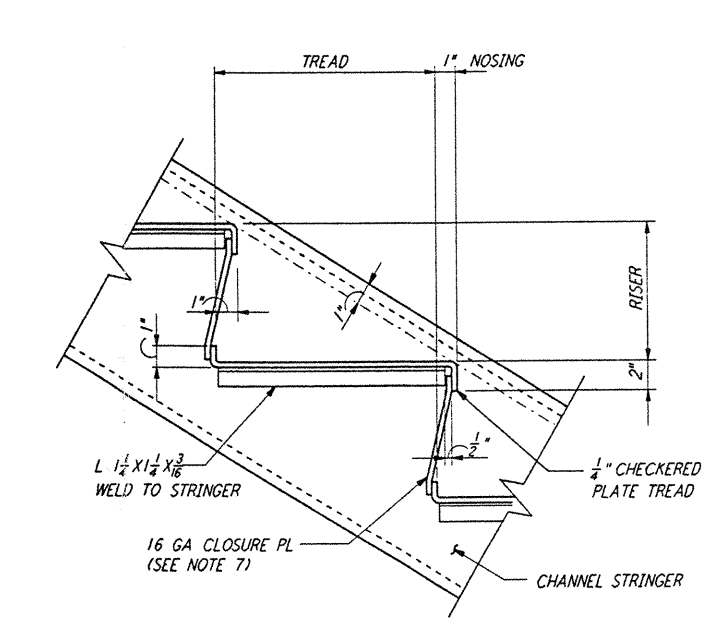
DETAIL 3



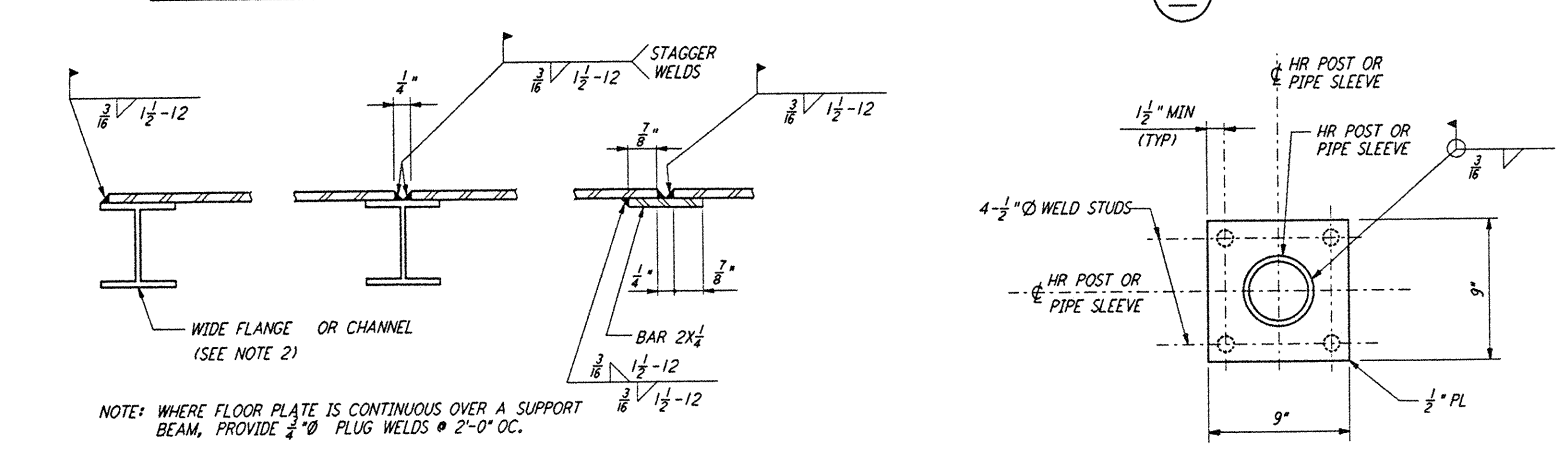
TYPICAL STAIR DETAILS



TYP SPlice CONN AT REMOVABLE FLOOR OR CHECKERED PLATE



CHECKERED PLATE TREAD DETAIL



TYP FIXED FLOOR OR CHECKERED PLATE

EMBEDDED PLATE DETAIL

This document and the design it covers are the property of PARSONS. They are loaned only with the borrower's expressed written agreement that they will not be reproduced, copied, loaned, exhibited, or used in any other way, except by written consent from PARSONS to the borrower.

| | | | | | | | | |
|---|---|--|---|---|---|--|--------------------------|---------------------|
| REFERENCES DRAWING NO. DESCRIPTION NO. DATE BY CHKD ENGR PROJ DESCRIPTION | ISSUED FOR CONSTRUCTION DRAWN MCS 11-15-96 CHECKED [Signature] 11-15-96 ENGINEER [Signature] 11-15-96 PROJ [Signature] 11/15/96 | | STATE OF LOUISIANA PROFESSIONAL ENGINEER No. 11376 JAMES A. LAURENCE | PARSONS 100 WEST WALNUT STREET PASADENA, CALIFORNIA | LIGO CALIFORNIA INSTITUTE OF TECHNOLOGY MASSACHUSETTS INSTITUTE OF TECHNOLOGY | LASER INTERFEROMETER GRAVITATIONAL-WAVE OBSERVATORY SITE NO. 2 - LIVINGSTON, LOUISIANA | | |
| | TITLE STRUCTURAL STANDARD STAIR & HANDRAIL DETAILS | | | | | SCALE NONE | CONTRACT NUMBER PP150969 | PROJECT NUMBER 8094 |
| SHEET NUMBER LA-S-009 | | | | | | LIGO-D960915-00-01 | | |