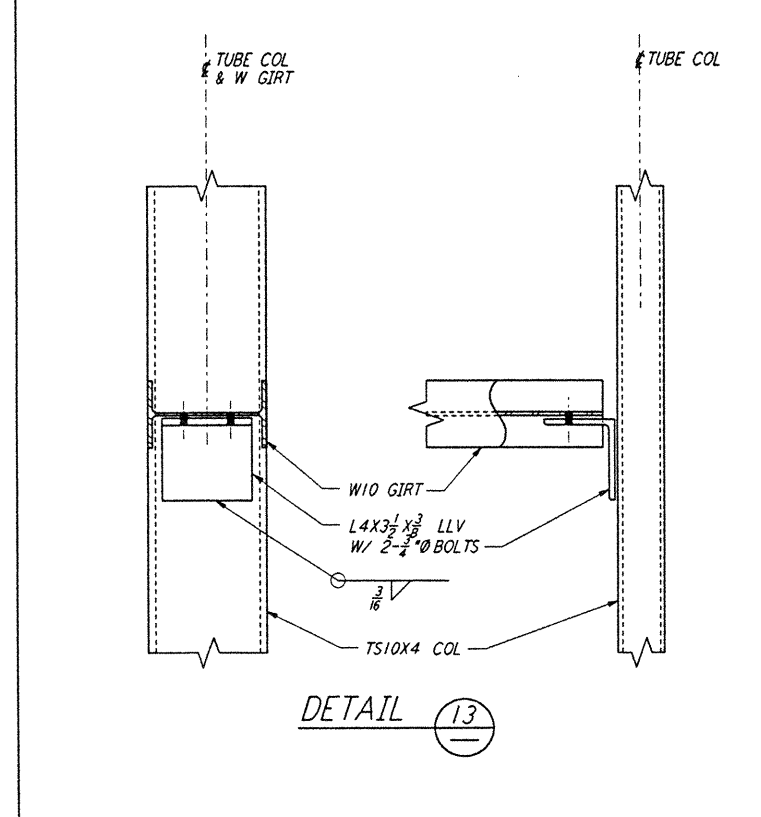
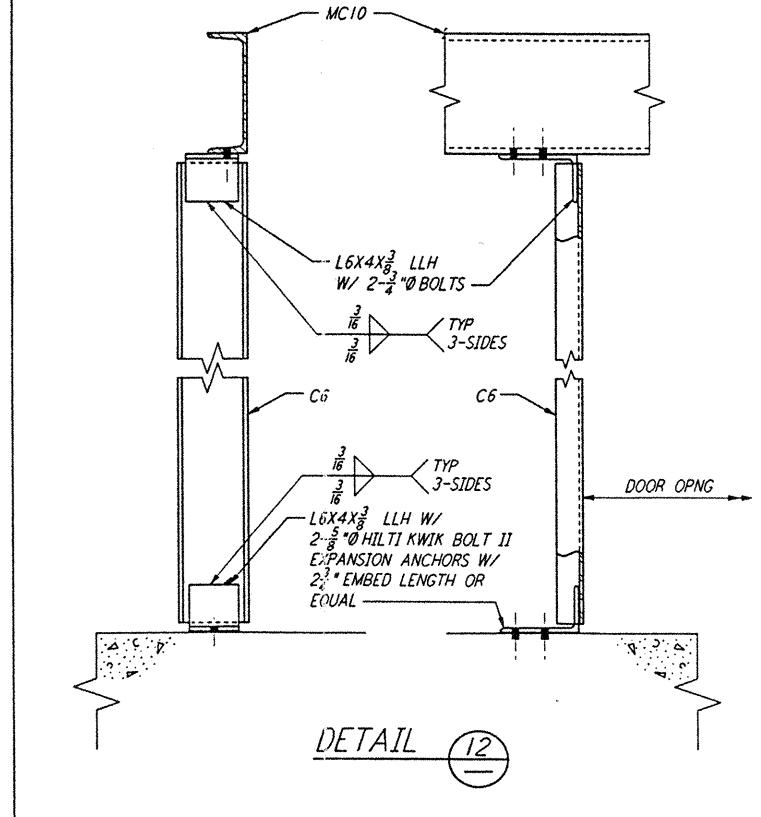
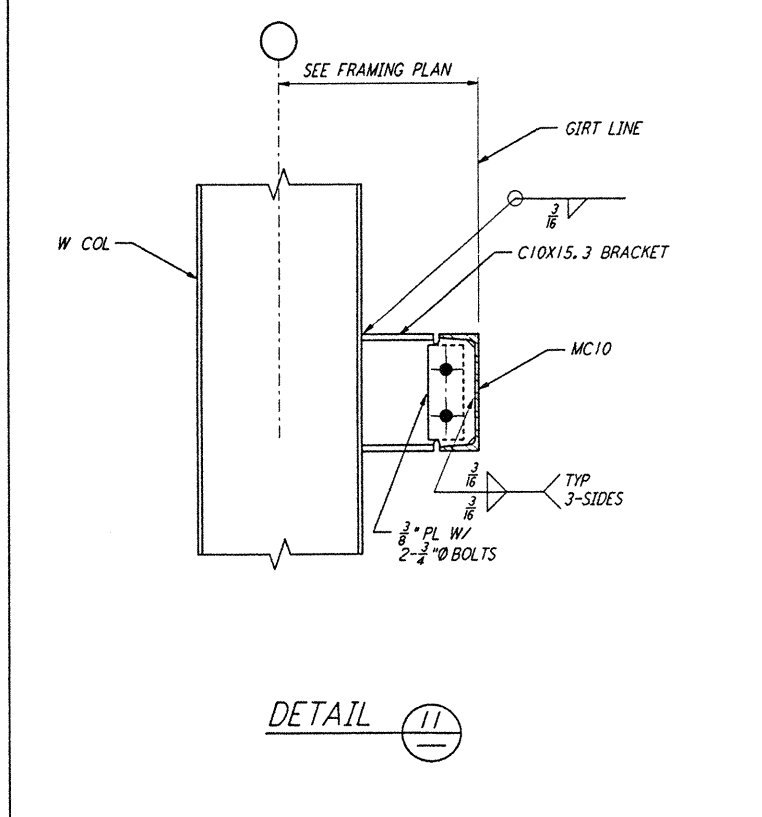
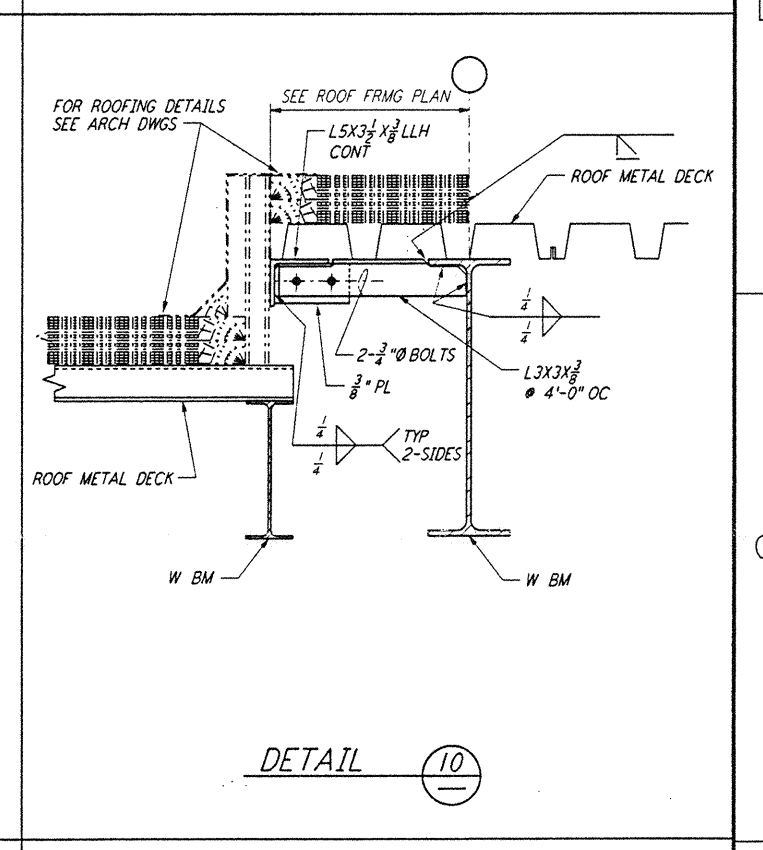
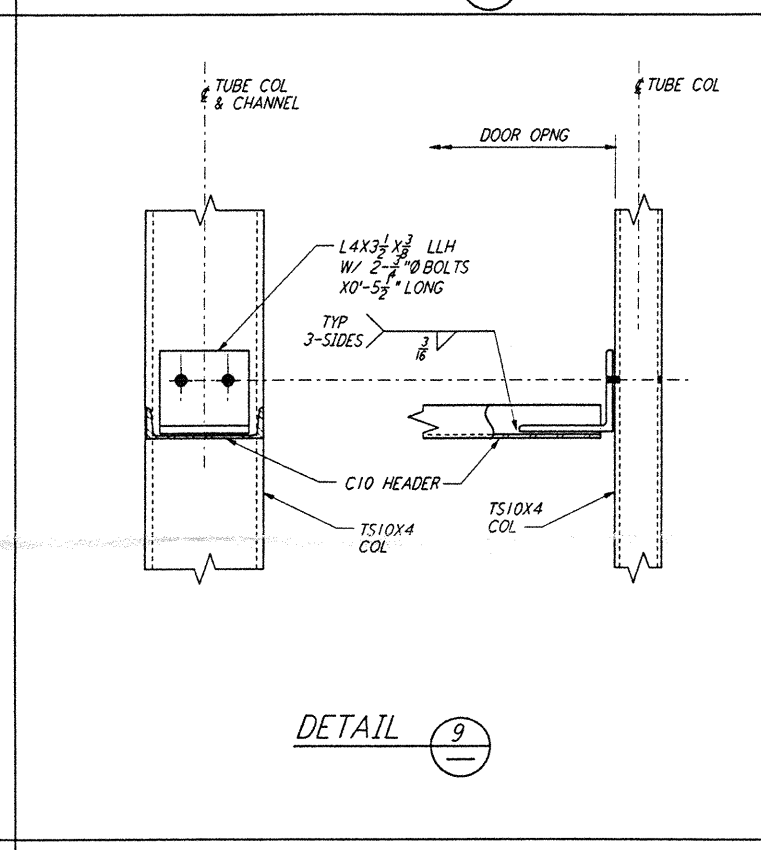
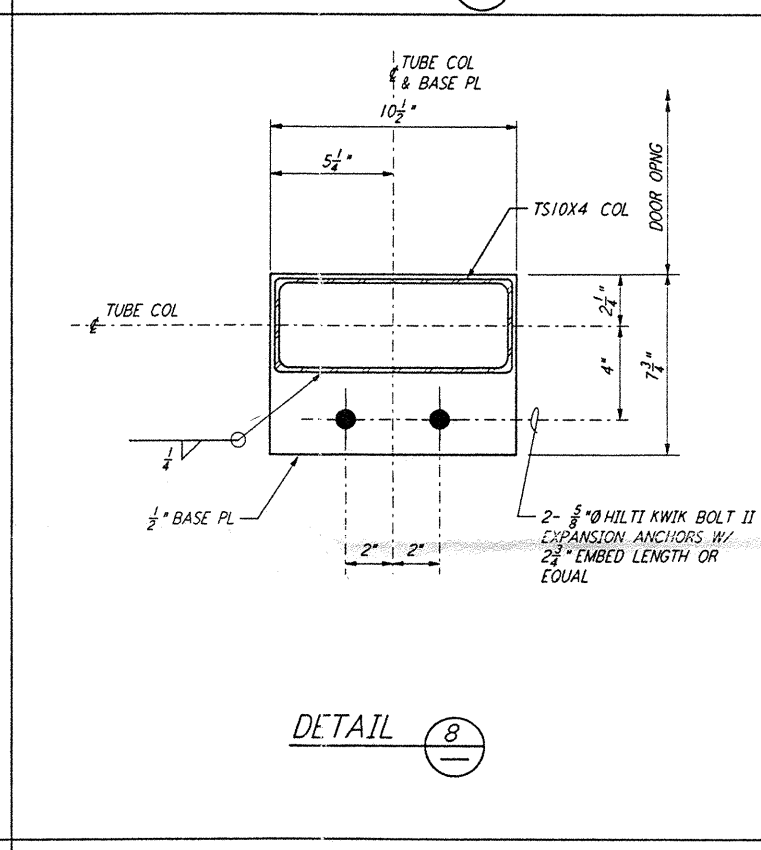
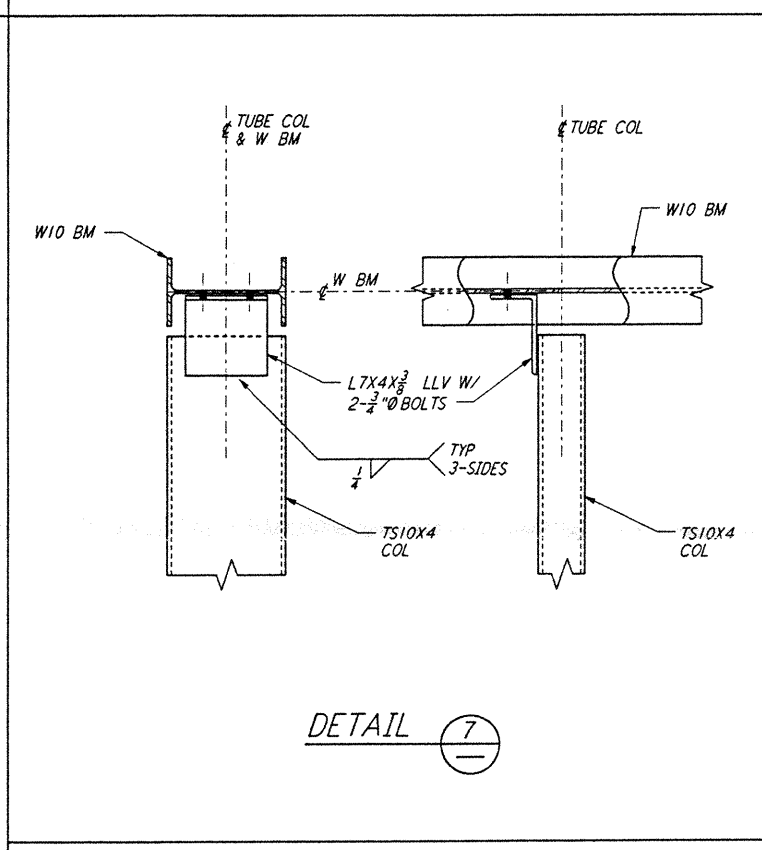


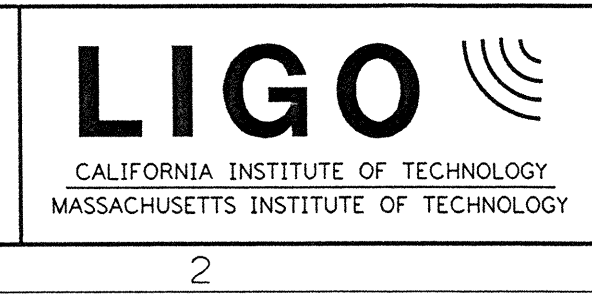
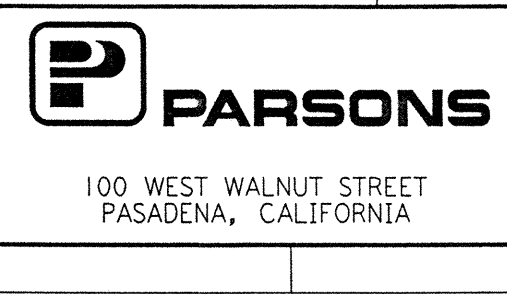
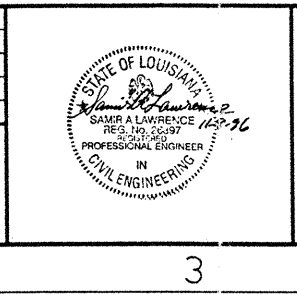
BUILDING ID	DOOR ID	DIMENSION "A"	FROM GRID (X)	TOWARD GRID (Y)
LVEA	101B	7 1/2'	7	8
OSB	170A	9'-9 1/2"	K.3	L.3
OSB	171B	6 1/2'	11.3	12.3
OSB	172B	6 1/2'	11.3	12.3
OSB	173B	3 1/2'	M.3	L.3
END STATION	205A	4 1/2'	C	D
END STATION	205B	8 1/2'	B	A



NOTE:
1. FOR GENERAL NOTES, ABBREVIATIONS AND SYMBOLS SEE DRAWING LA-S-001.

ISSUED FOR CONSTRUCTION	DATE
DRAWN	MCS 11-15-96
CHECKED	2001 11-15-96
ENGINEER	187 11-15-96
PROJ	52399 11/15/96

REV	NO.	DATE	BY	CHKD	ENGR	PROJ	DESCRIPTION



LASER INTERFEROMETER GRAVITATIONAL-WAVE OBSERVATORY SITE NO.2 - LIVINGSTON, LOUISIANA

TITLE	STRUCTURAL STANDARD STRUCTURAL STEEL CONNECTION DETAILS SHEET 4	SCALE	NONE	PROJECT NUMBER	PP150969
SHEET NUMBER	LA-S-007	REVISIONS			

LIG0-D960913-00-□ | LIG0LAF-BDR

This document and the design it covers are the property of PARSONS. They are loaned only with the borrower's expressed written agreement that they will not be reproduced, copied, loaned, exhibited, or used in any other way, except by written consent from PARSONS to the borrower.

PROJECT: 24 000000 0100 537000C - JAVL013\WEBERS\A\B002\1000\H2M2

E
D
C
B
A