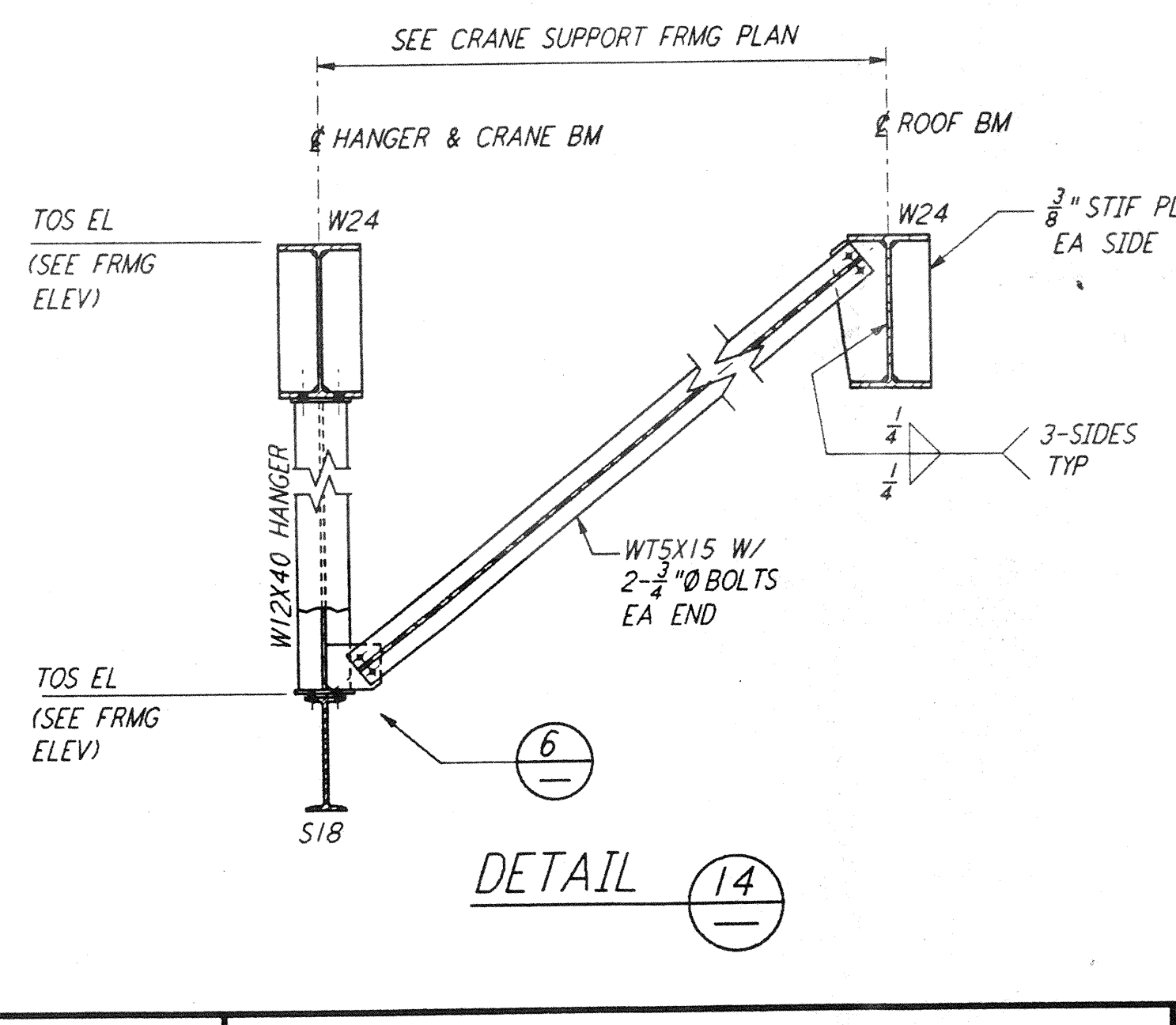
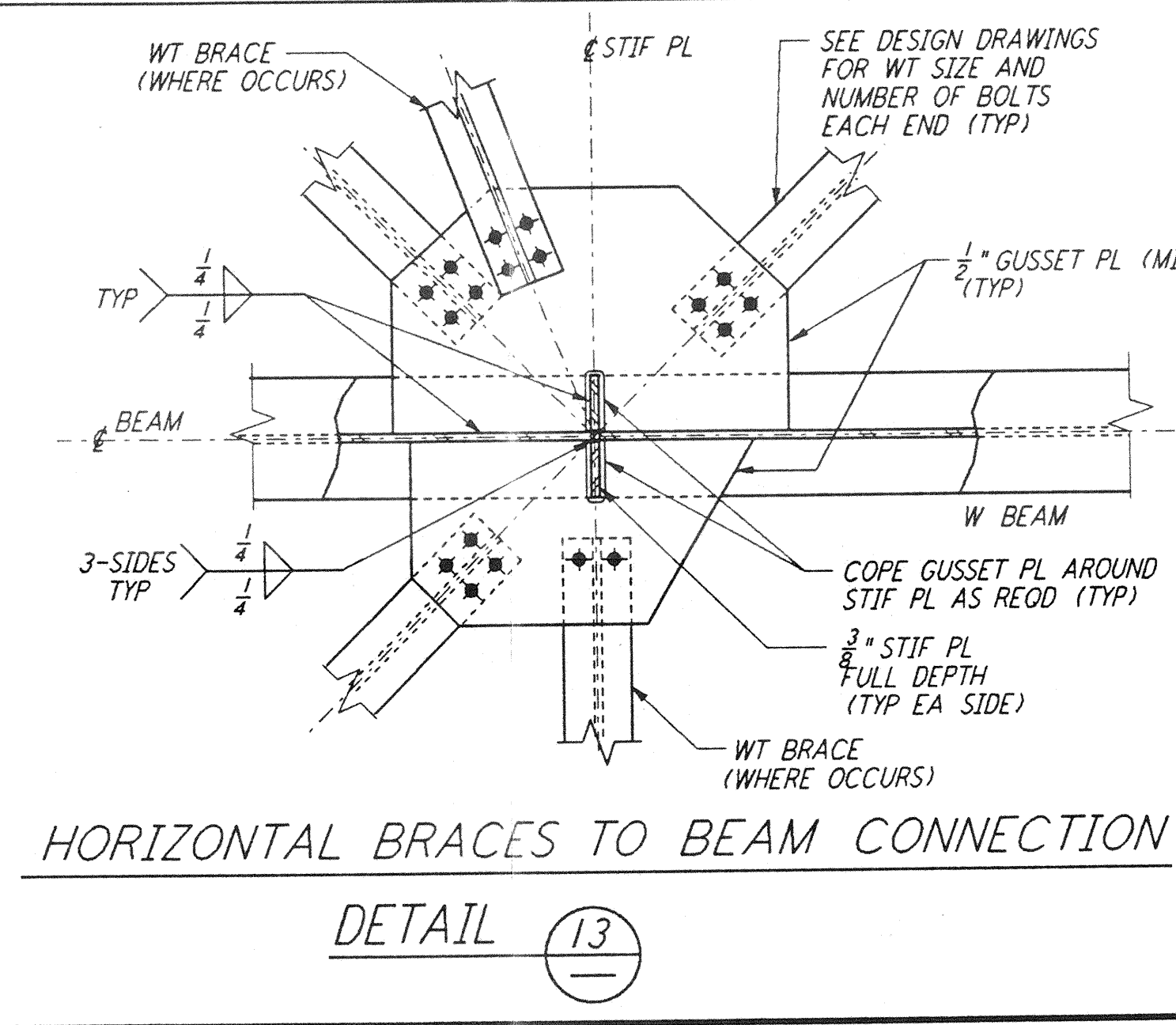
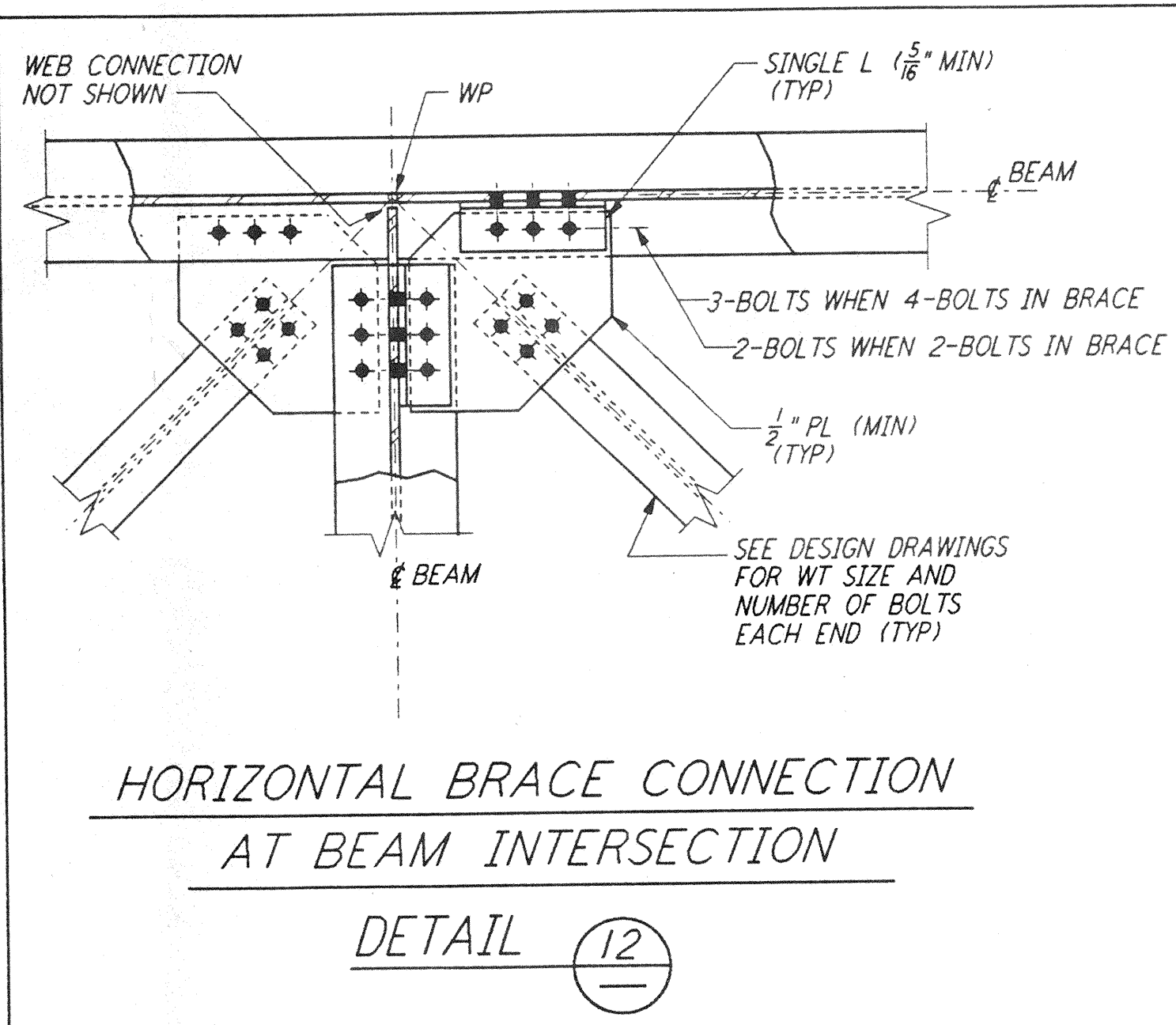
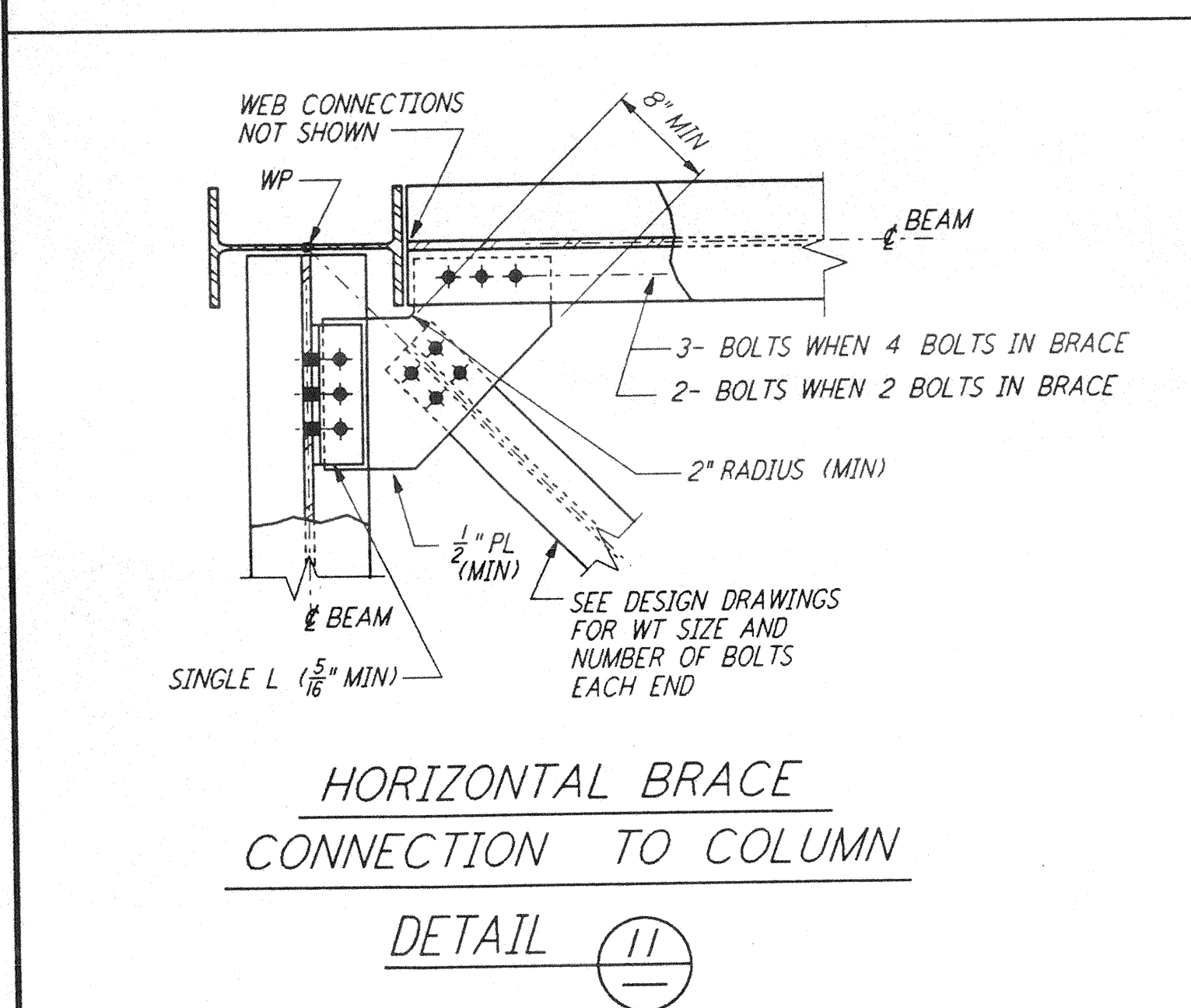
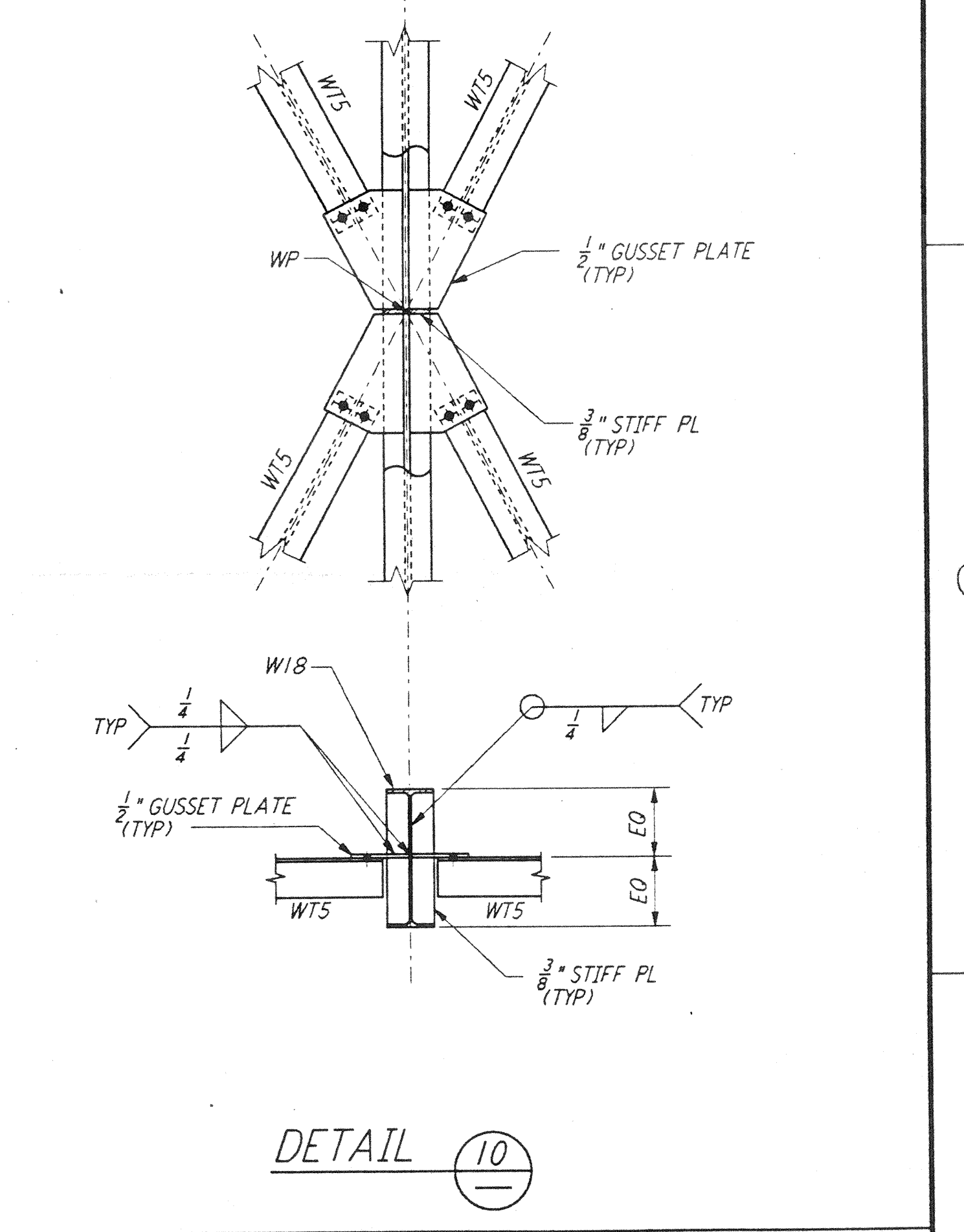
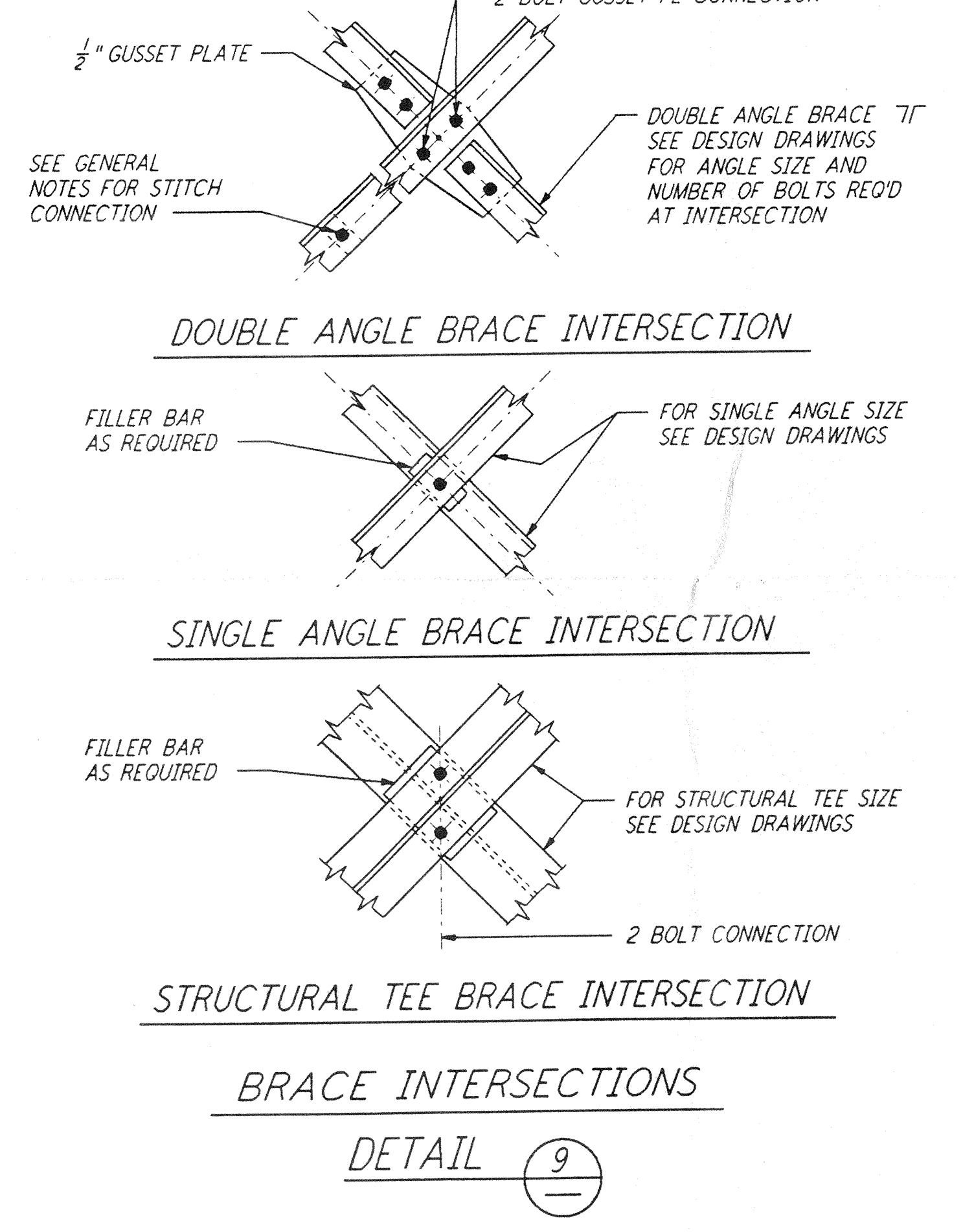
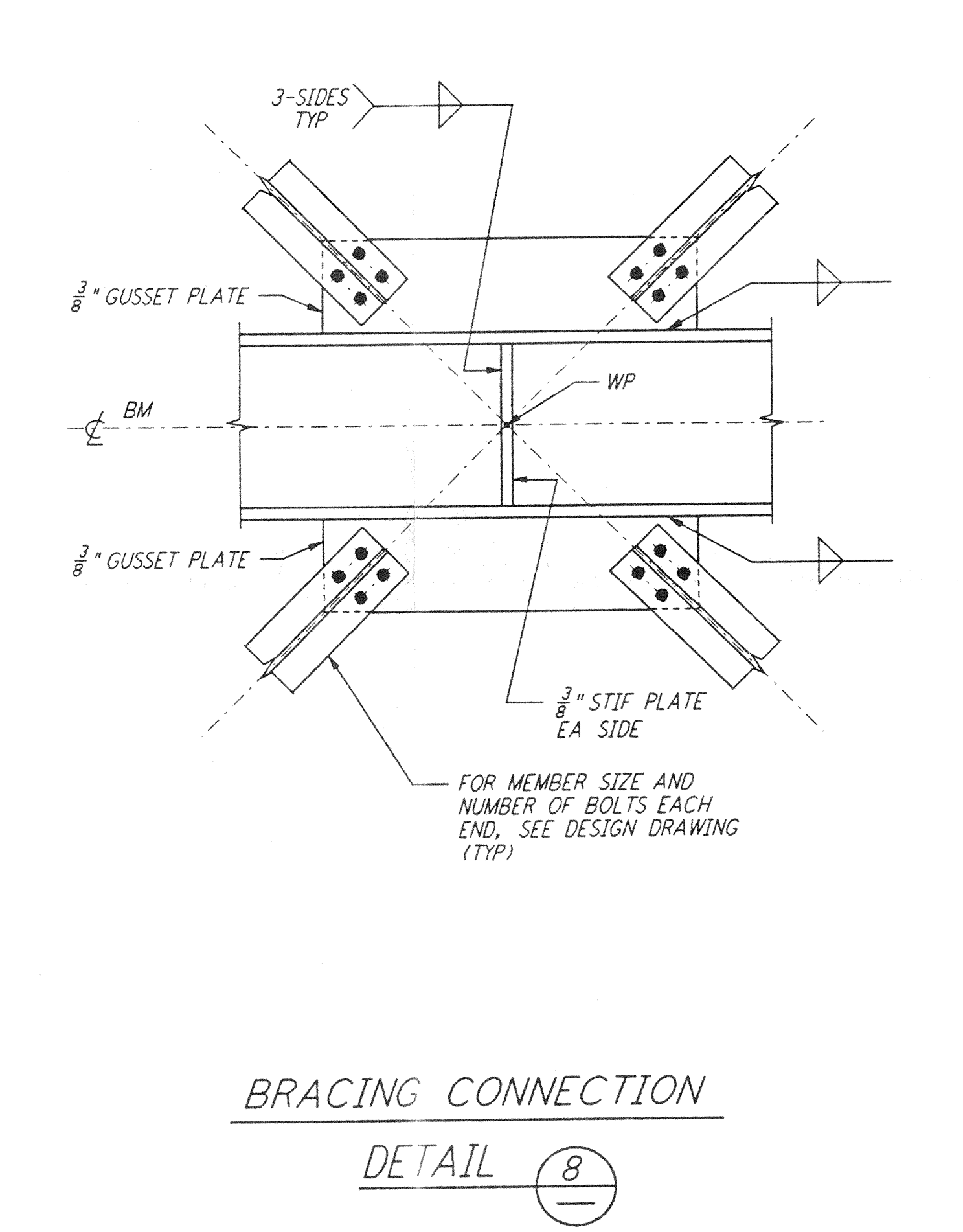
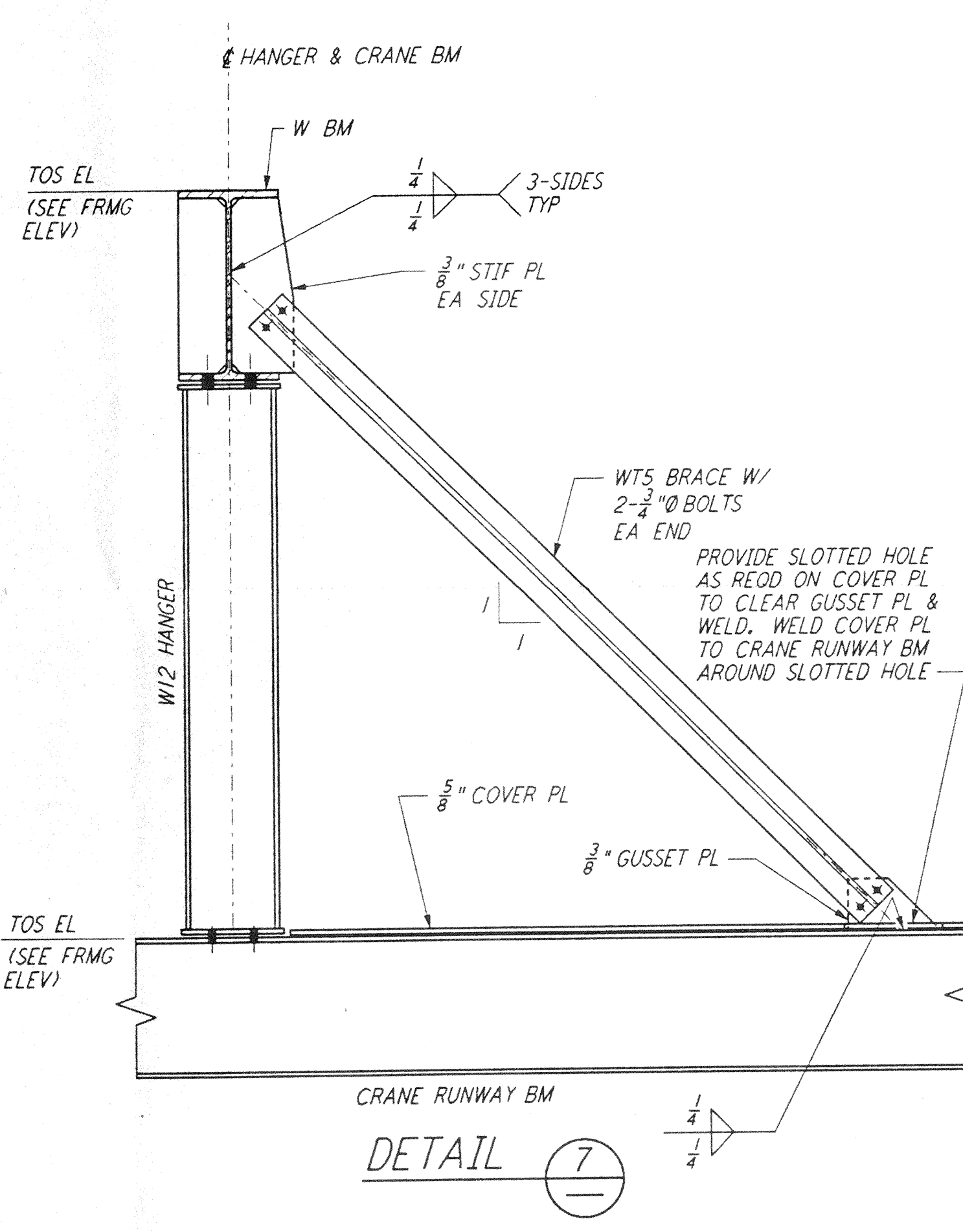
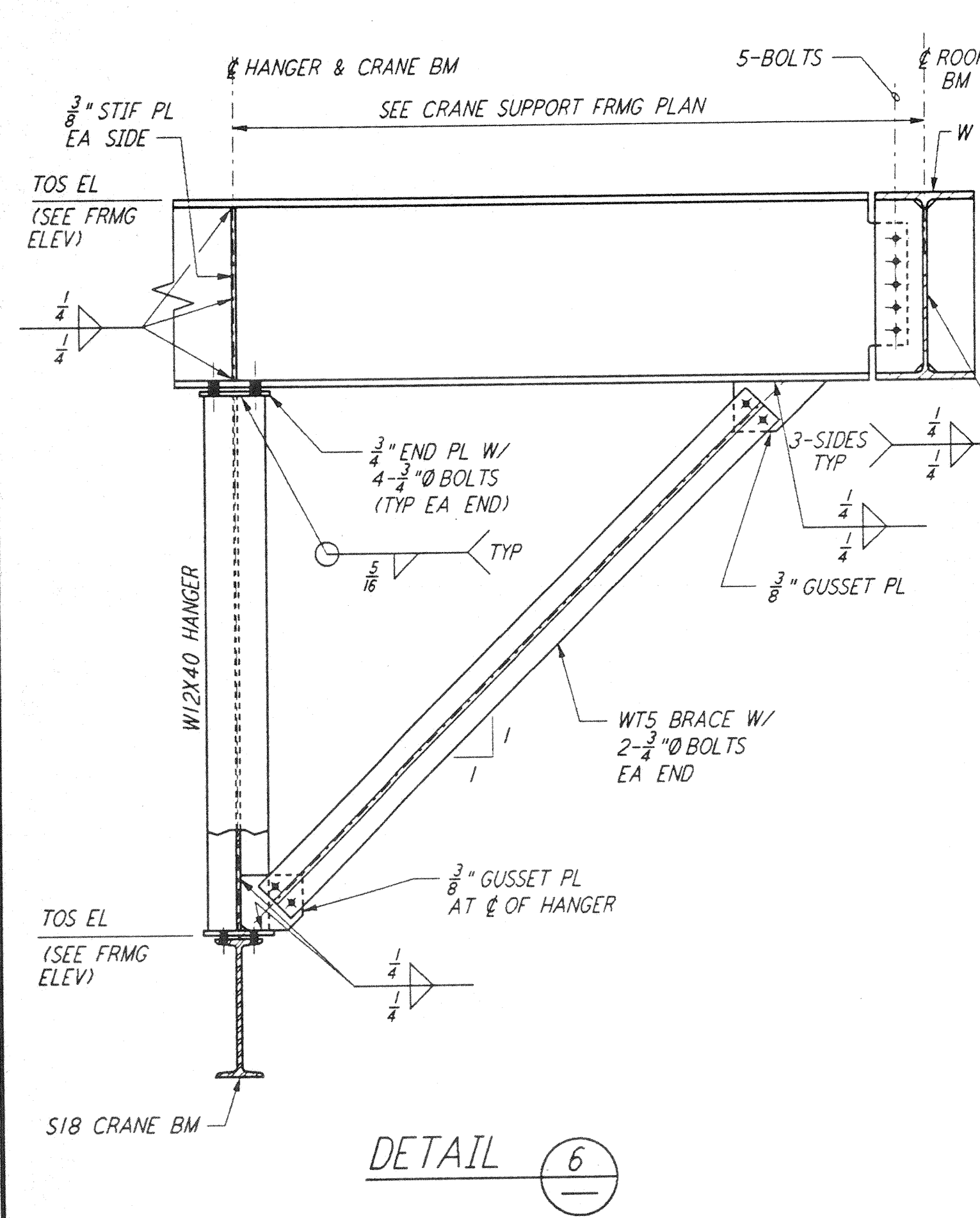
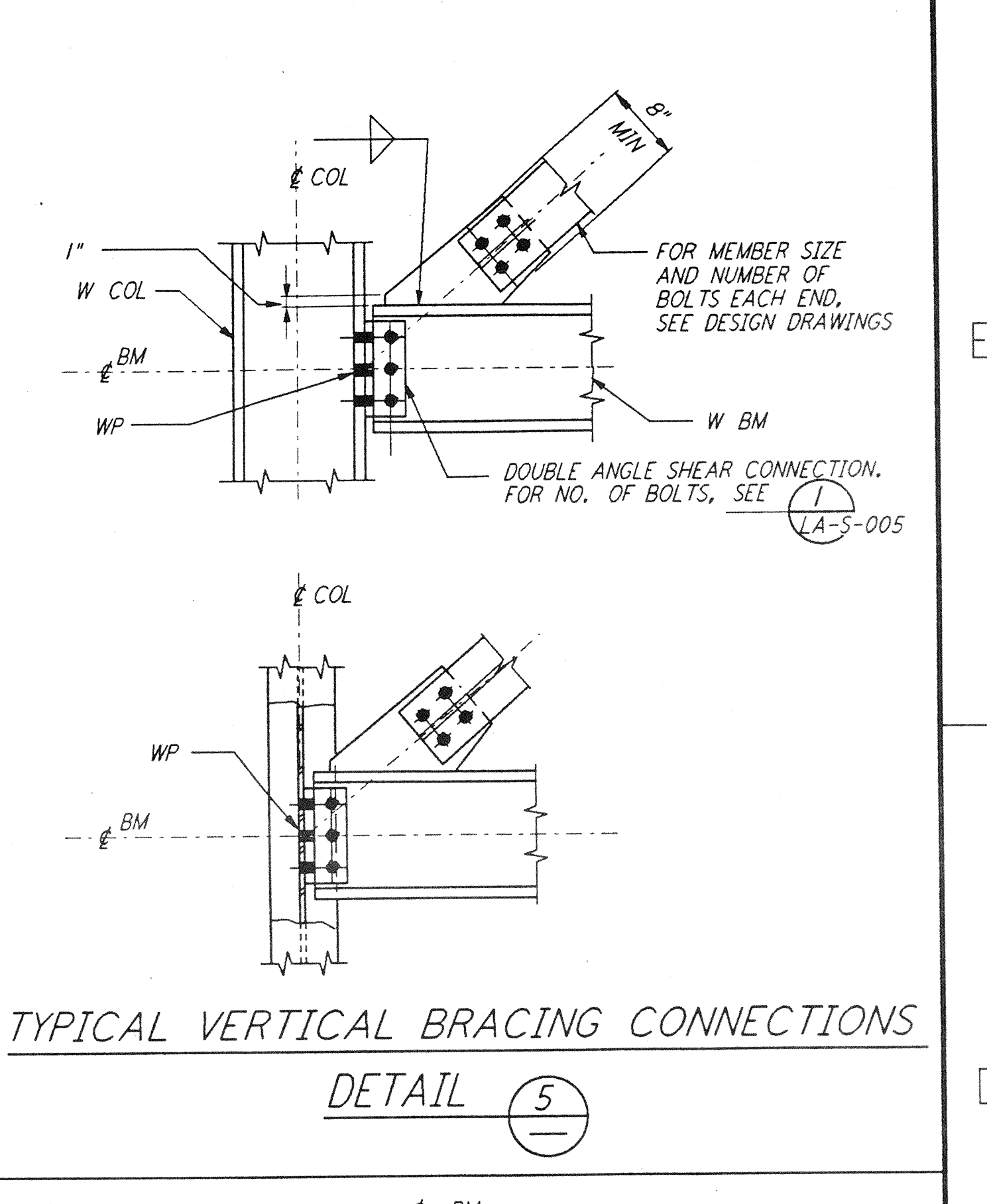
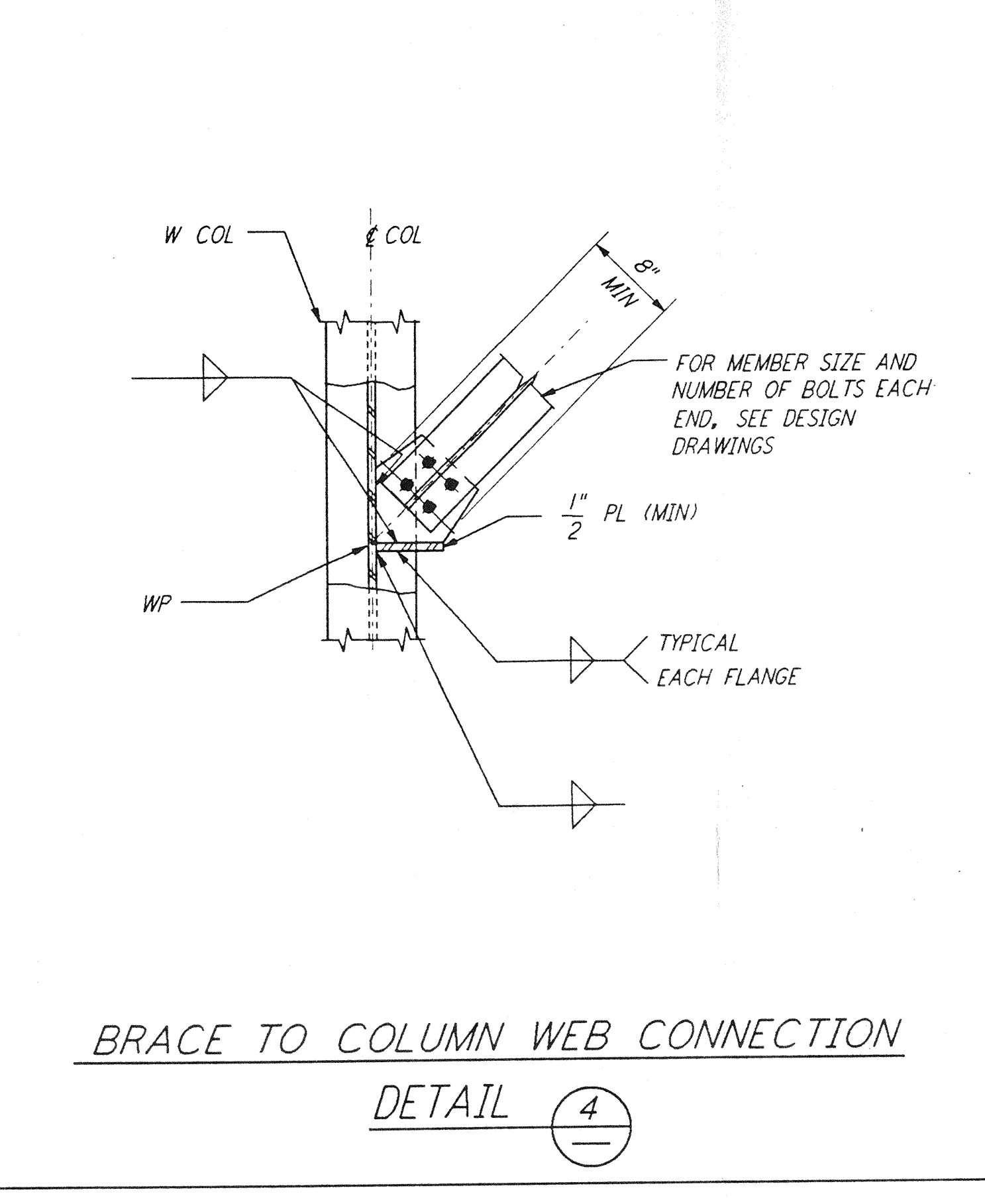
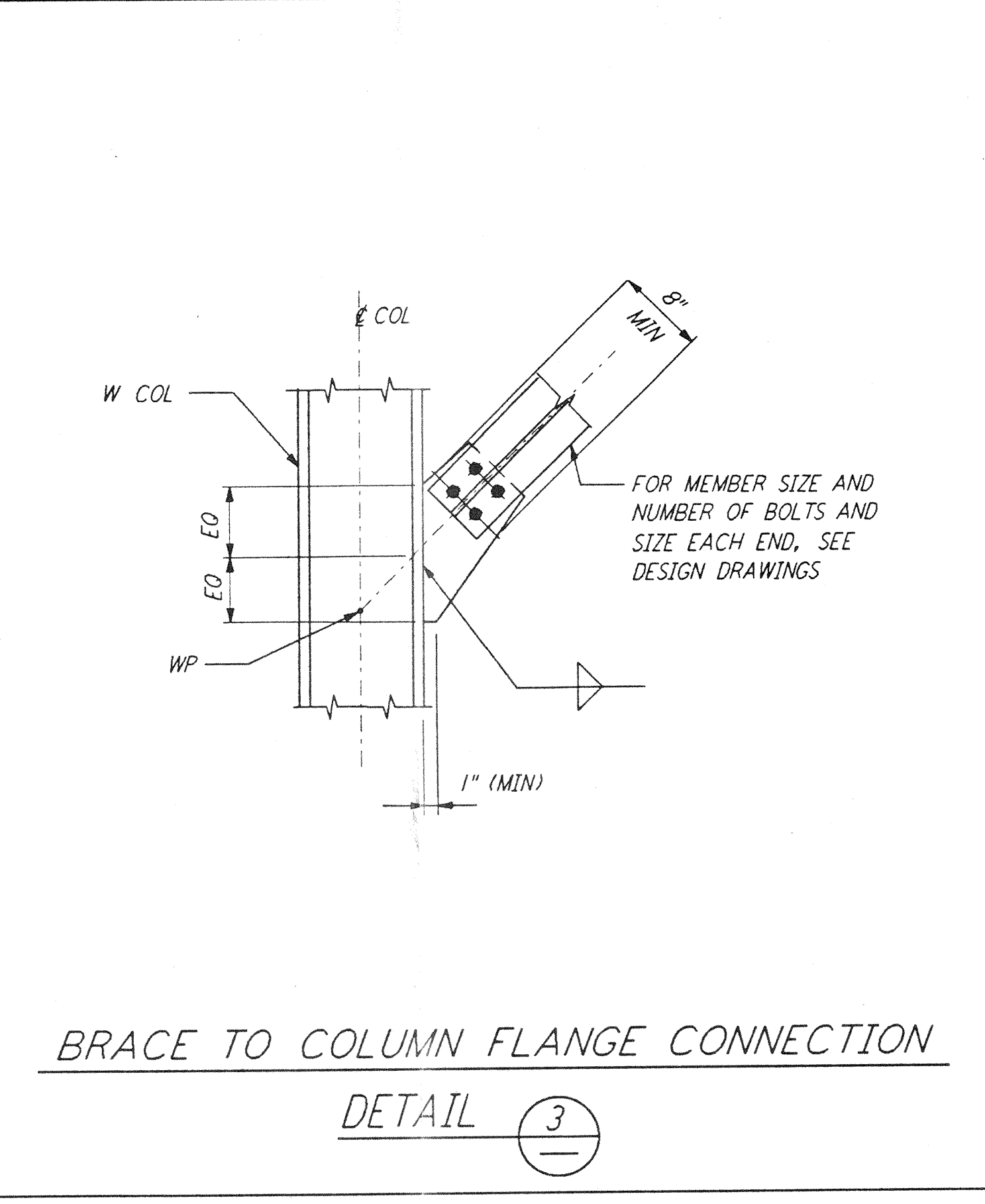
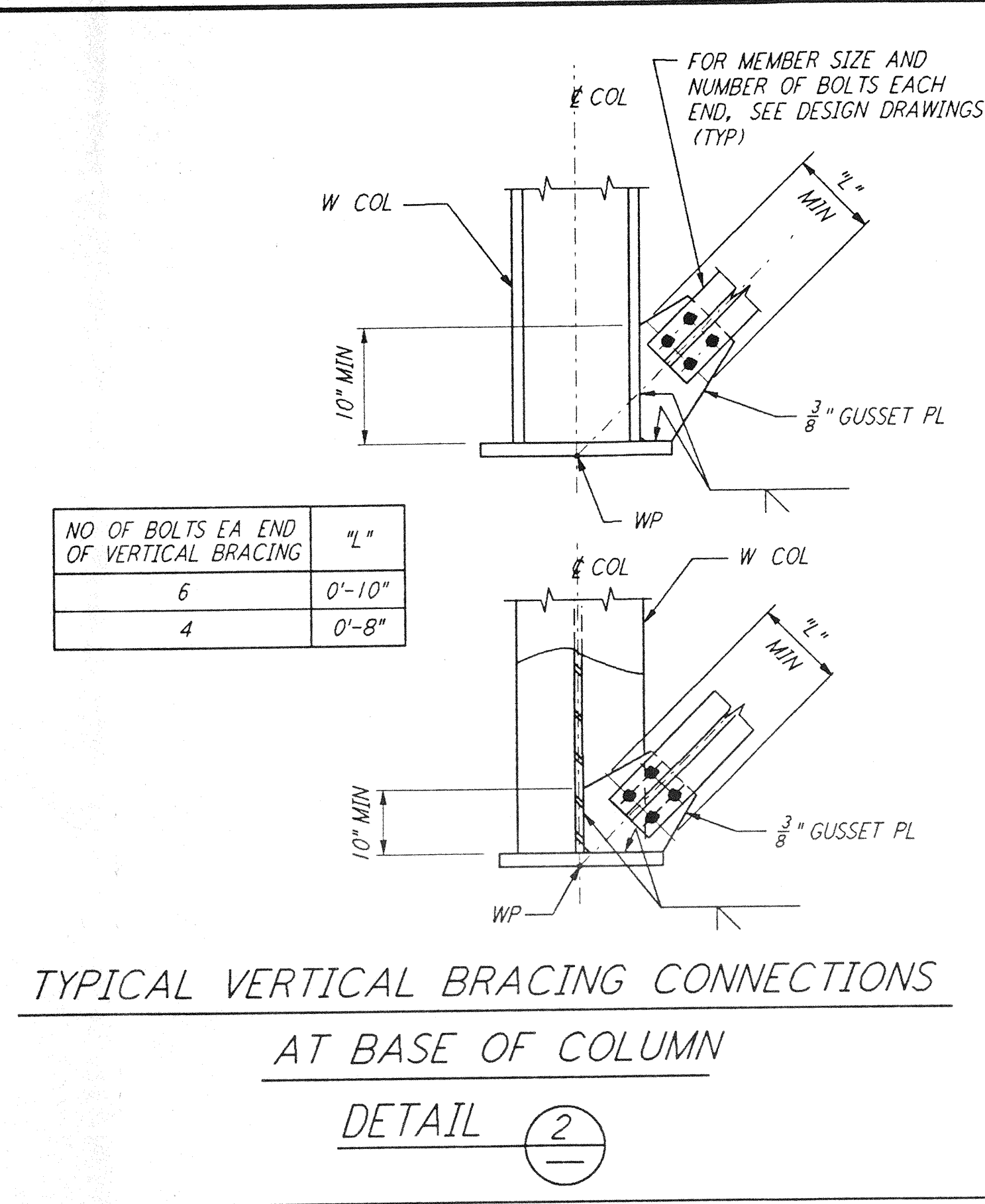
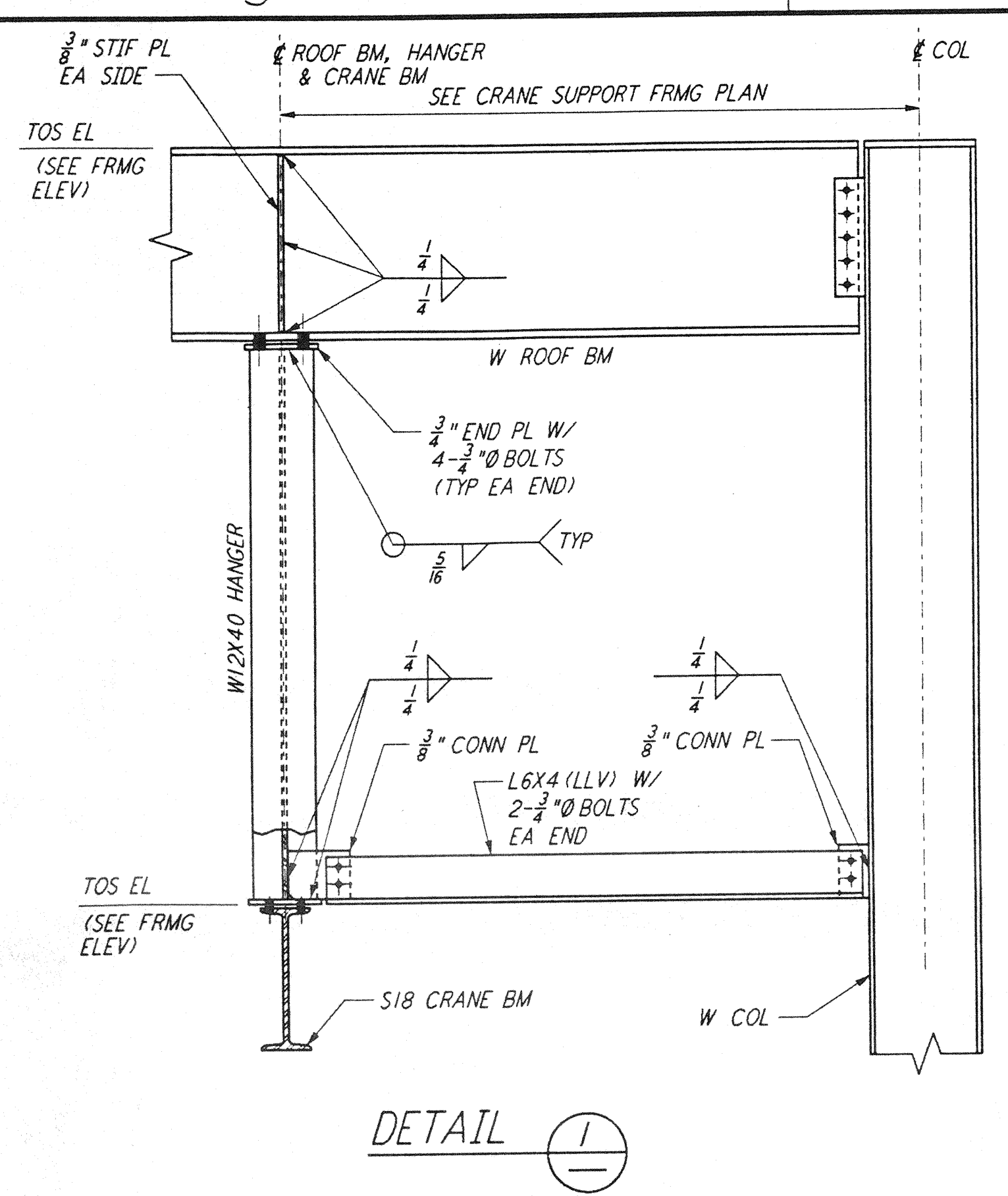


This document and the design it covers are the property of PARSONS. They are loaned only with the borrower's expressed written agreement that they will not be reproduced, copied, loaned, exhibited, or used in any other way, except by written consent from PARSONS to the borrower.



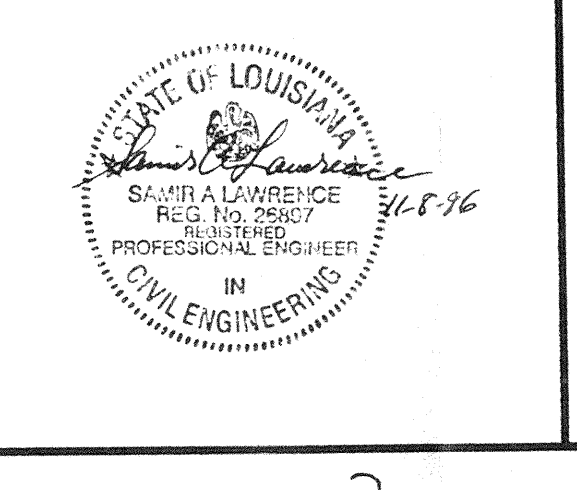
NOTES:

- FOR GENERAL NOTES, ABBREVIATIONS AND SYMBOLS SEE DRAWING LA-5-001.
- ALL ANGLE VERTICAL BRACING END CONNECTIONS SHALL HAVE TWO BOLTS EACH END UNLESS NOTED OTHERWISE ON THE DESIGN DRAWINGS.

ISSUED FOR CONSTRUCTION	11-15-96
DRAWN	MCS 11-15-96
CHECKED	11-15-96
ENGINEER	11-15-96
PROJ	11/15/96

NO.	DATE	BY	CHKD	ENGR	PROJ	DESCRIPTION

STATE OF LOUISIANA
 PROFESSIONAL ENGINEER
 11/15/96



PARSONS
 100 WEST WALNUT STREET
 PASADENA, CALIFORNIA

LIGO
 CALIFORNIA INSTITUTE OF TECHNOLOGY
 MASSACHUSETTS INSTITUTE OF TECHNOLOGY

LASER INTERFEROMETER GRAVITATIONAL-WAVE OBSERVATORY SITE NO. 2 - LIVINGSTON, LOUISIANA			
TITLE	SCALE	CONTRACT NUMBER	PROJECT NUMBER
STRUCTURAL STANDARD STRUCTURAL STEEL CONNECTION DETAILS SHEET 3	NONE	PP150969	8094
SHEET NUMBER	LA-S-006		REVISIONS