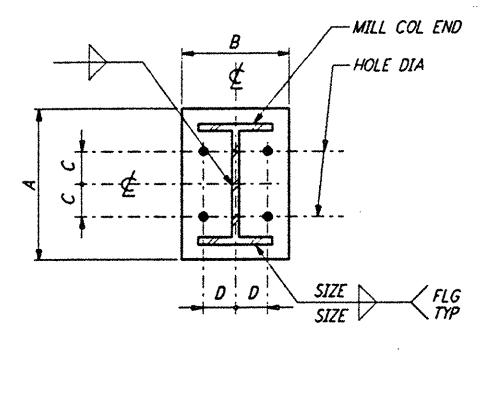


5

4

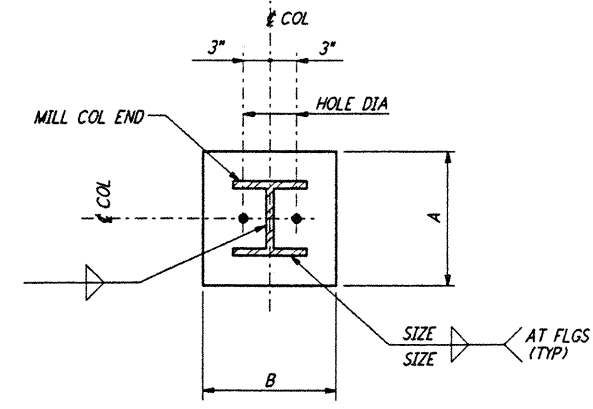
3

2



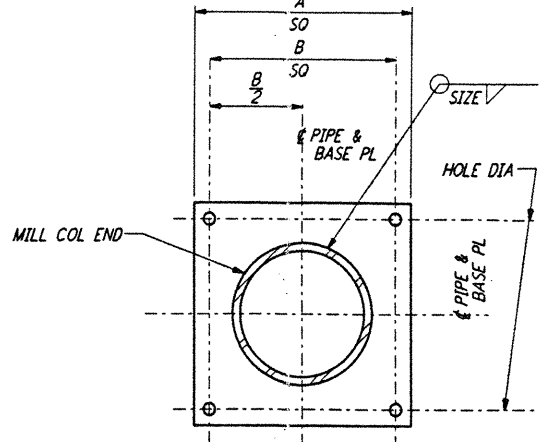
BASE PLATE SCHEDULE						
MEMBER SIZE	A	B	C	D	PL THICK	SIZE WELD
WB	1'-0"	0'-11"	2 1/2"	2 1/2"	1"	5/8"
W10	1'-0"	0'-11"	3"	3"	1"	5/8"
W12	1'-2"	0'-11"	3 1/2"	3 1/2"	1 1/2"	5/8"
W14	1'-4"	1'-4"	3 1/2"	3 1/2"	1 1/2"	5/8"
W16	1'-6"	1'-4"	3 1/2"	3 1/2"	1 1/2"	5/8"

BASE PLATE DETAILS (1)



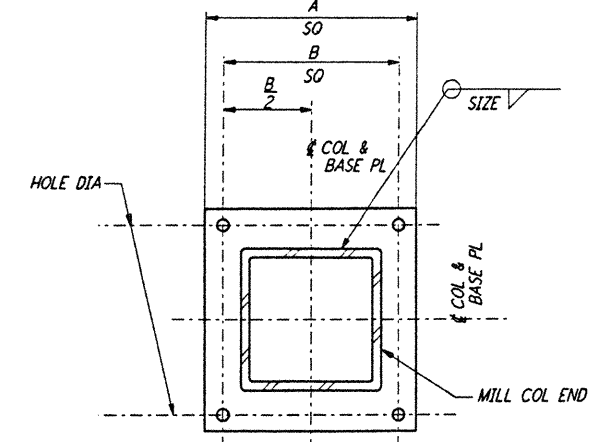
BASE PLATE SCHEDULE					
MEMBER SIZE	A	B	PL THICK	HOLE DIA	SIZE WELD
WB	0'-10"	0'-10"	3/4"	1 1/8"	1/2"
W10	1'-0"	0'-10"	1"	1 1/8"	5/8"
W12	1'-2"	0'-10"	1"	1 1/8"	5/8"
W14	1'-4"	0'-10"	1 1/2"	1 1/8"	5/8"
W16	1'-6"	0'-10"	1 1/2"	1 1/8"	5/8"

BASE PLATE DETAIL (2)



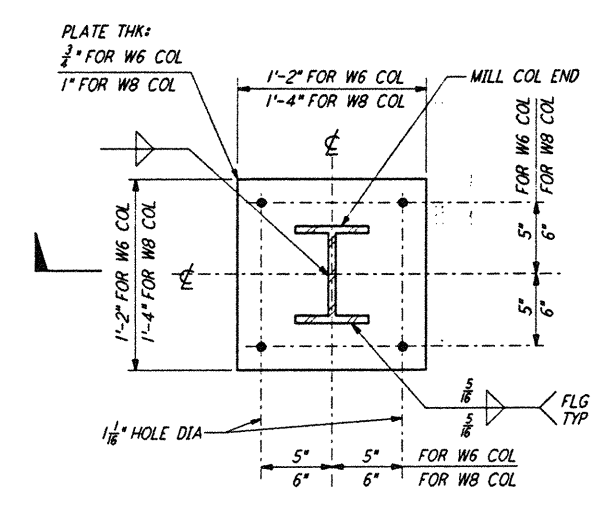
BASE PLATE SCHEDULE					
PIPE DIA	A	B	PL THICK	HOLE DIA	SIZE WELD
3"	1'-0"	0'-8"	3/4"	1 1/8"	1/2"
4"	1'-0"	0'-8"	1"	1 1/8"	5/8"
5"	1'-2"	0'-10"	1 1/2"	1 1/8"	5/8"
6"	1'-4"	1'-0"	1 1/2"	1 1/8"	5/8"
8"	1'-4"	1'-0"	1 1/2"	1 1/8"	5/8"

PIPE BASE PLATE DETAIL (3)



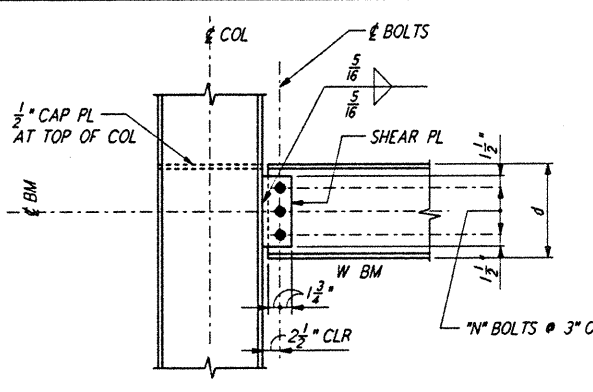
BASE PLATE SCHEDULE					
COL SIZE	A	B	PL THICK	HOLE DIA	SIZE WELD
TS4X4	1'-0"	0'-8"	1"	1 1/8"	1/2"
TS5X5	1'-2"	0'-10"	1 1/2"	1 1/8"	5/8"
TS6X6	1'-4"	1'-0"	1 1/2"	1 1/8"	5/8"
TS7X7	1'-6"	1'-2"	1 1/2"	1 1/8"	5/8"
TS8X8	1'-6"	1'-2"	1 1/2"	1 1/8"	5/8"

TS BASE PLATE DETAIL (4)



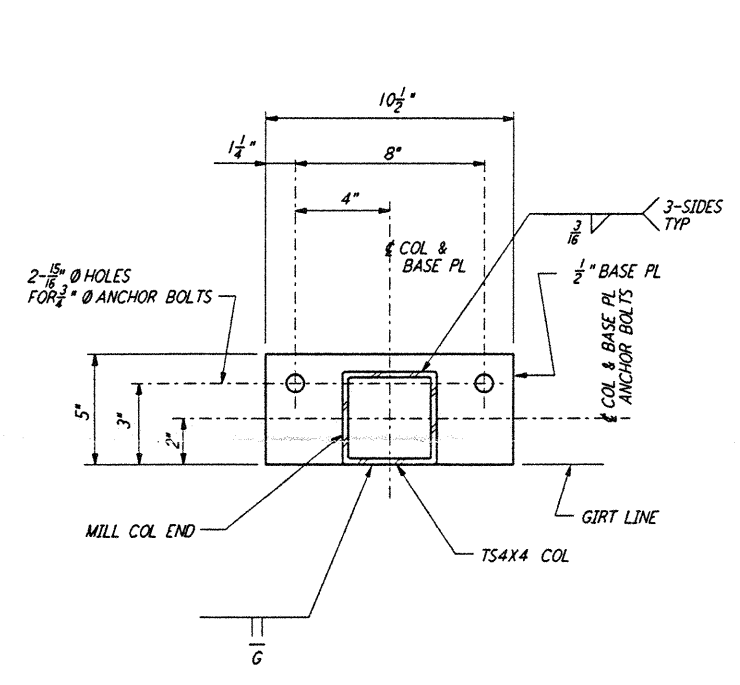
BASE PLATE DETAIL (5)

This document and the design it covers are the property of PARSONS. They are loaned only with the borrower's expressed written agreement that they will not be reproduced, copied, loaned, exhibited, or used in any other way, except by written consent from PARSONS to the borrower.

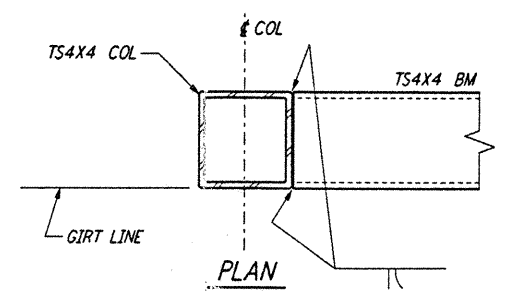


SCHEDULE	
BEAM DEPTH d (INCHES)	NO. OF BOLTS "n"
8, 10	2
12, 14	3
16, 18	4
21, 24, 27	5
30, 33, 36	6

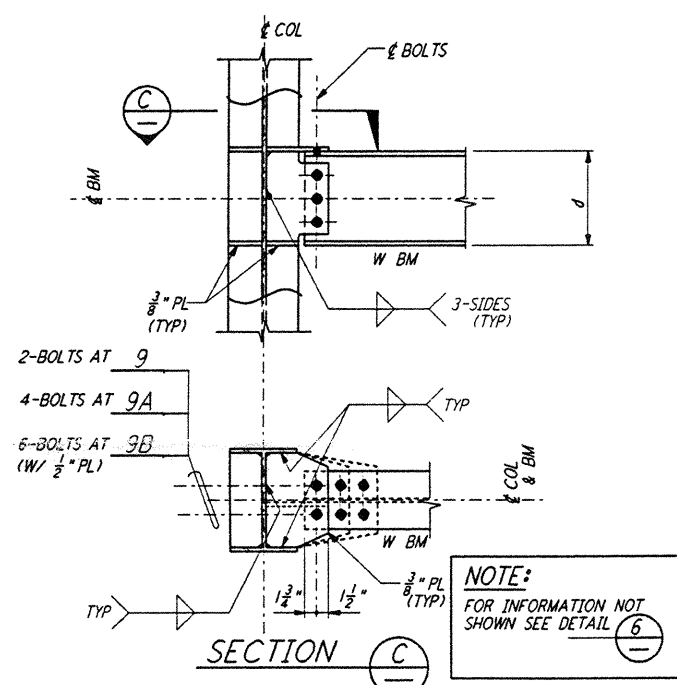
BEAM TO COLUMN CONNECTION DETAIL (6)



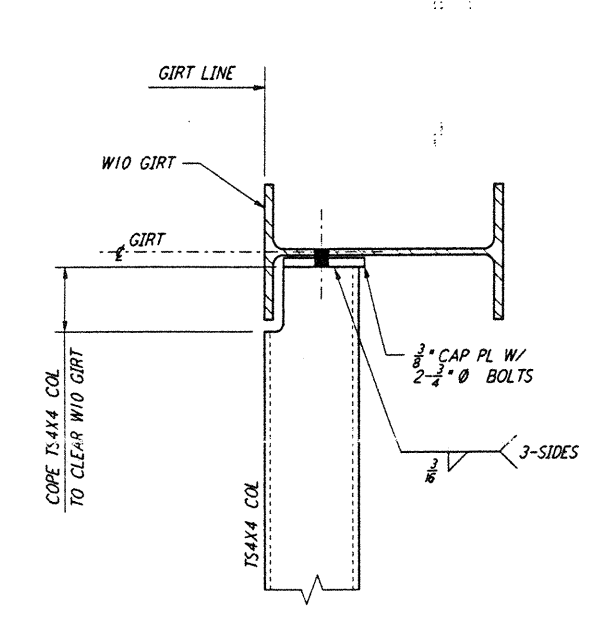
BASE PLATE DETAIL (7)



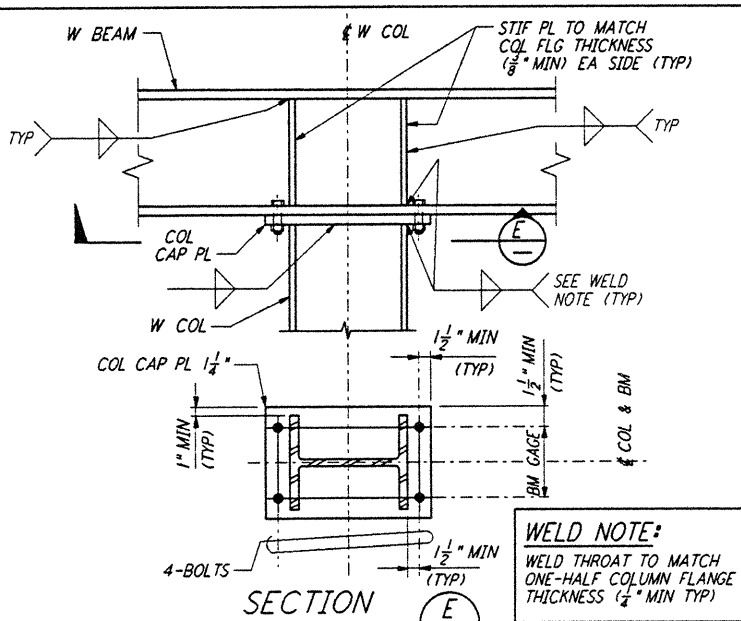
ELEVATION DETAIL (8)



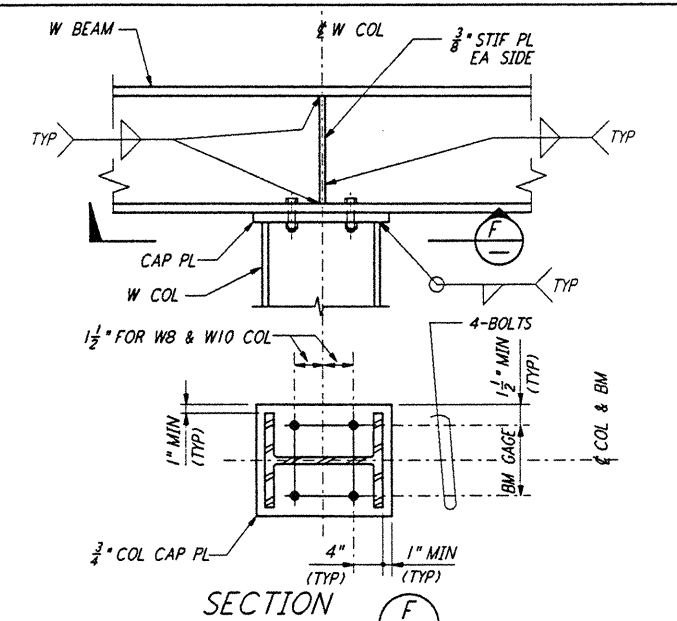
STRUT BEAM TO COLUMN CONNECTION DETAIL (9)



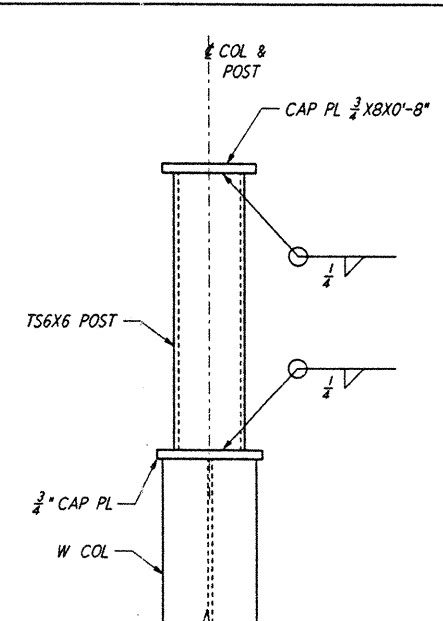
DETAIL (10)



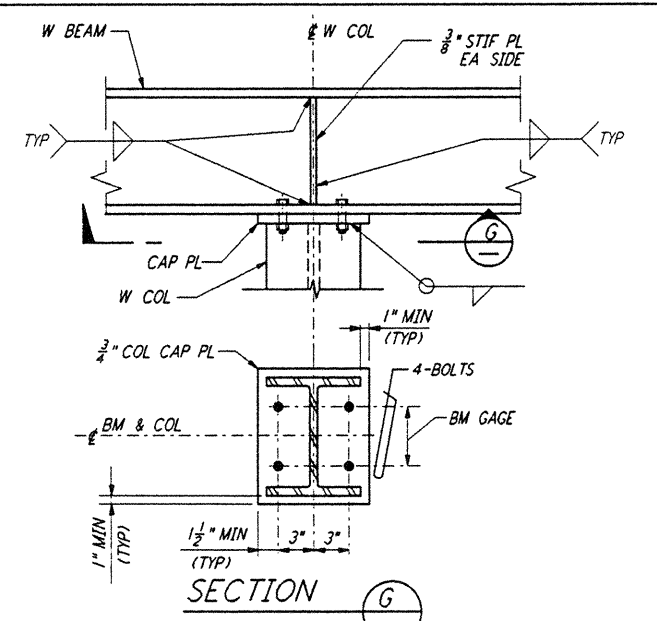
BEAM TO COLUMN BOLTED MOMENT CONNECTION DETAIL (11)



BEAM TO COLUMN BOLTED CONNECTION DETAIL (12)



ROOF PLATFORM SUPPORT DETAIL (13)



BEAM TO COLUMN BOLTED CONNECTION DETAIL (14)

NOTE:
 1. FOR GENERAL NOTES, ABBREVIATIONS AND SYMBOLS SEE DRAWING S-001.

LIGO-D960910-B-0

NO.	DATE	BY	CHKD	ENGR	PROJ	DESCRIPTION
B	6-14-96	MCS	SM	SM	SM	FINAL DESIGN REVIEW
A	10-31-95	TDM	SM	SM	SM	PRELIMINARY DESIGN REVIEW

DRAWN	MCS
CHECKED	
ENGINEER	
PROJ	

PARSONS
 100 WEST WALNUT STREET
 PASADENA, CALIFORNIA

LIGO
 CALIFORNIA INSTITUTE OF TECHNOLOGY
 MASSACHUSETTS INSTITUTE OF TECHNOLOGY

LASER INTERFEROMETER
 GRAVITATIONAL-WAVE OBSERVATORY
 SITE NO. 2 - LIVINGSTON, LOUISIANA

TITLE	STRUCTURAL : STANDARD STRUCTURAL STEEL CONNECTION DETAILS SHEET 1	NO. NONE	PROJECT NUMBER PPI50969	PROJECT NUMBER 8094
LA-S-004				

JUN 13 17:42:24 1996 837082Z JAVELIN\VOIR\SVR\B2\ST004.PDF