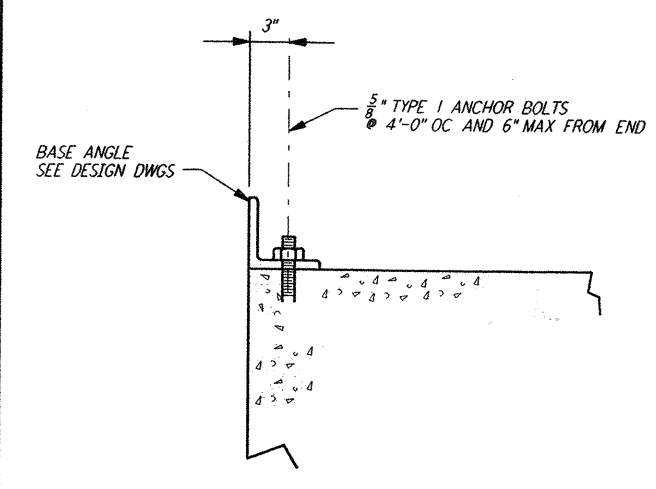
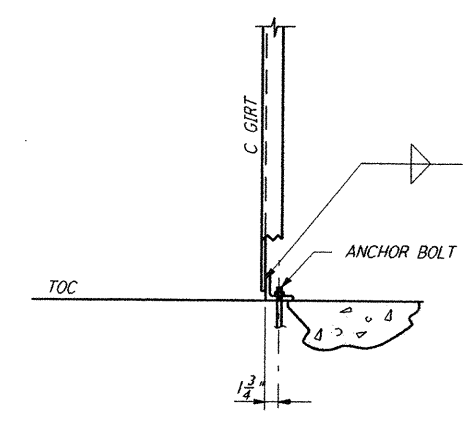


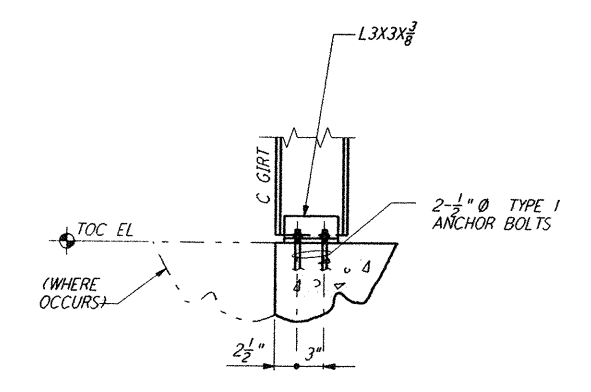
- NOTES:**
- BOLT MATERIAL SHALL BE IN ACCORDANCE WITH ASTM A307, UNLESS OTHERWISE SPECIFIED.
  - USE UNIFIED NATIONAL COARSE THREAD, CLASS 2 FIT.
  - USE HEAVY DOUBLE CHAMFER HEX NUTS UP TO 1", AND HEAVY FLAT FACE HEX NUTS LARGER THAN 1".
  - PROVIDE 1 HEX NUT FOR EACH BOLT, UNLESS OTHERWISE NOTED ON DESIGN DRAWINGS.
  - PLATE WASHER MATERIAL SHALL BE ASTM A36, UNLESS OTHERWISE NOTED.
  - FABRICATOR SHALL BUNDLE AND TAG BOLTS BY INDIVIDUAL FOUNDATIONS OR MEMBERS. TAGS SHALL BE WEATHER RESISTANT, WITH MARKS AT LEAST 1/2" HIGH, AND FIRMLY WIRED TO BUNDLES.
  - SLEEVES SHALL NOT BE USED UNLESS SPECIFIED ON THE DESIGN DRAWINGS.



**BASE ANGLE CONNECTION** (2) LA-S-003



**FRONT VIEW**

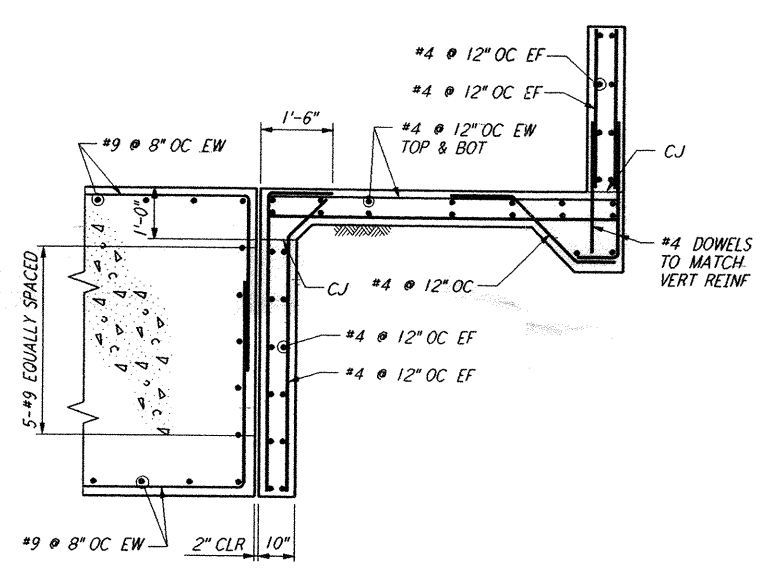


**SIDE VIEW**

**DETAIL** (3) LA-S-003

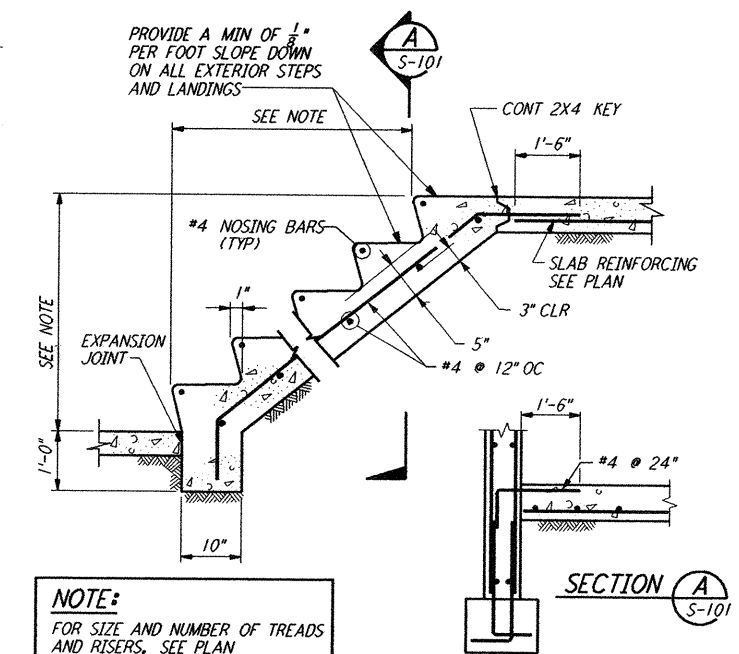
ANCHOR BOLT SCHEDULE							
DIA D	TYPE 2		TYPE 3	SLEEVE TYPE 1, 2 & 3		TYPE 3	DIA D
	B	C	PLATE WASHER	DIA	LENGTH	WELD SIZE	
1/2"	2 1/2"	3 1/2"		2"	5"		1 1/2"
3/8"	3 1/2"	3 1/2"		2"	5"		3/8"
3/4"	3 3/4"	4 1/2"		2"	7"		3/4"
7/8"	4 1/8"	5 1/2"		2"	7"		7/8"
1"	5"	6 1/2"	2 1/2" X 2 1/2" X 3/8"	3"	10"	1/4"	1"
1 1/8"	5 3/8"	7"	3" X 3" X 1/2"	3"	10"	1/4"	1 1/8"
1 1/4"	6 1/4"	7 3/4"	3 1/2" X 3 1/2" X 1/2"	3"	10"	5/16"	1 1/4"
1 3/8"	6 3/8"	8 1/2"	3 1/2" X 3 1/2" X 1/2"	4"	15"	5/16"	1 3/8"
1 1/2"	7 1/2"	9 3/8"	3 3/4" X 3 3/4" X 5/8"	4"	15"	5/16"	1 1/2"

**ANCHOR BOLTS DETAILS** (1) LA-S-003



**NOTE:**  
DO NOT REMOVE WALL SHORING UNTIL BOTTOM AND TOP SLAB ON GRADE ARE IN PLACE.

**DETAIL** (4) LA-S-003



**NOTE:**  
FOR SIZE AND NUMBER OF TREADS AND RISERS, SEE PLAN

**CONCRETE STAIRS ON GRADE** (4) LA-S-003

**NOTES:**  
1. FOR GENERAL NOTES, ABBREVIATIONS AND SYMBOLS, SEE DRAWING S-001

This document and the design it covers are the property of PARSONS. They are loaned only with the borrower's expressed written agreement that they will not be reproduced, copied, loaned, exhibited, or used in any other way, except by written consent from PARSONS to the borrower.

NO.	DATE	APRD BY	DESCRIPTION OF REVISION
9			
8			
7			
6			
5			
4			
3			
2			
1			

ISSUE	NO.	DATE	APRD BY	ISSUED FOR
A	10-31-95	TDM		PRELIMINARY DESIGN REVIEW

DATE	10-31-95
DRAWN	MCS
CHECKED	
ENGINEER	
PROJ MGR	

**PARSONS**  
 100 WEST WALNUT STREET  
 PASADENA, CALIFORNIA

**LIGO**  
 CALIFORNIA INSTITUTE OF TECHNOLOGY  
 MASSACHUSETTS INSTITUTE OF TECHNOLOGY

LASER INTERFEROMETER  
 GRAVITATIONAL-WAVE OBSERVATORY  
 SITE NO. 2 - LIVINGSTON, LOUISIANA

TITLE: STANDARD CONCRETE DETAILS SHEET 2

SCALE: NONE CONTRACT NUMBER: PPI50969 PROJECT NUMBER: 8094

SHEET NUMBER: **LA-S-003**