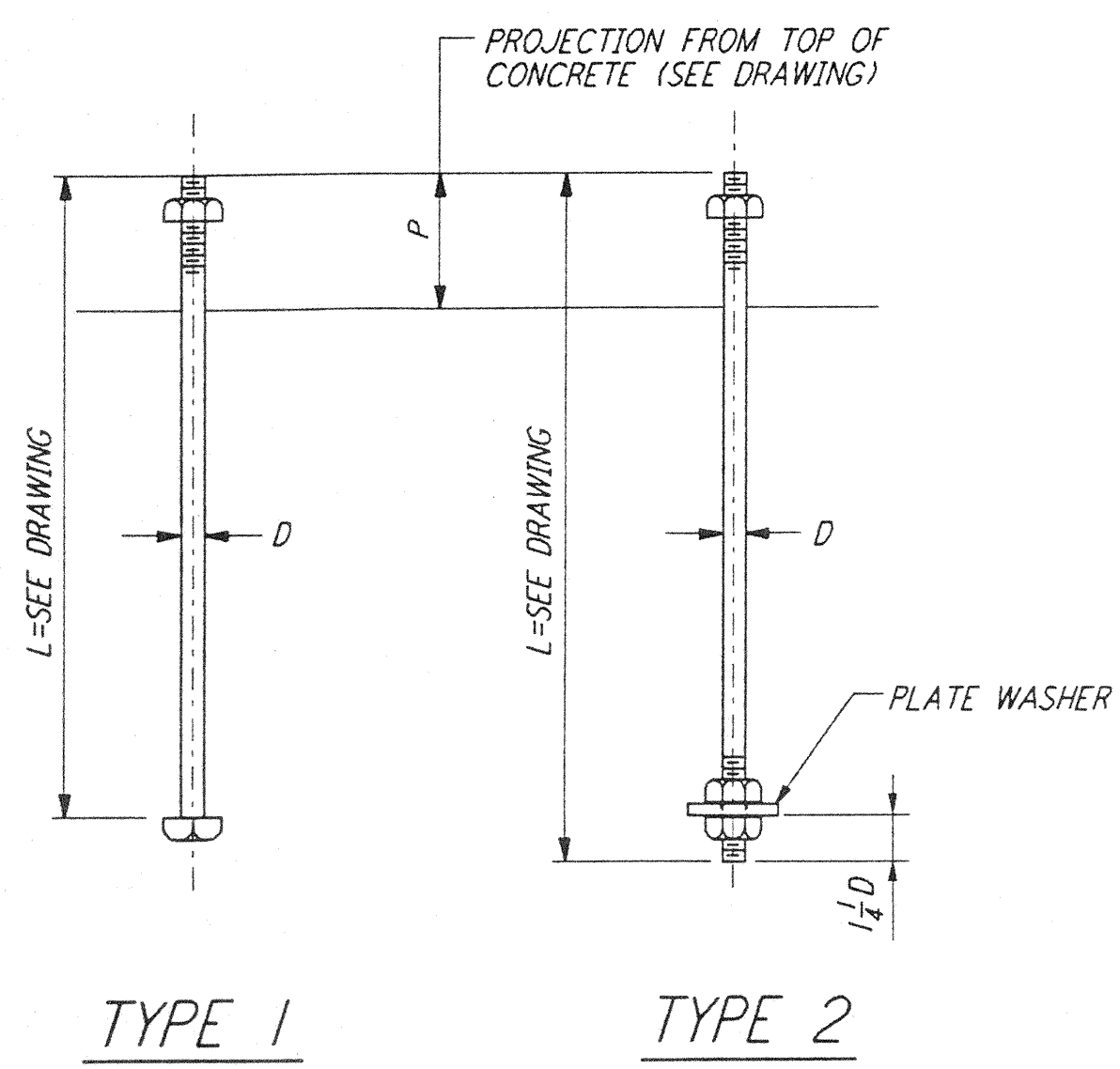


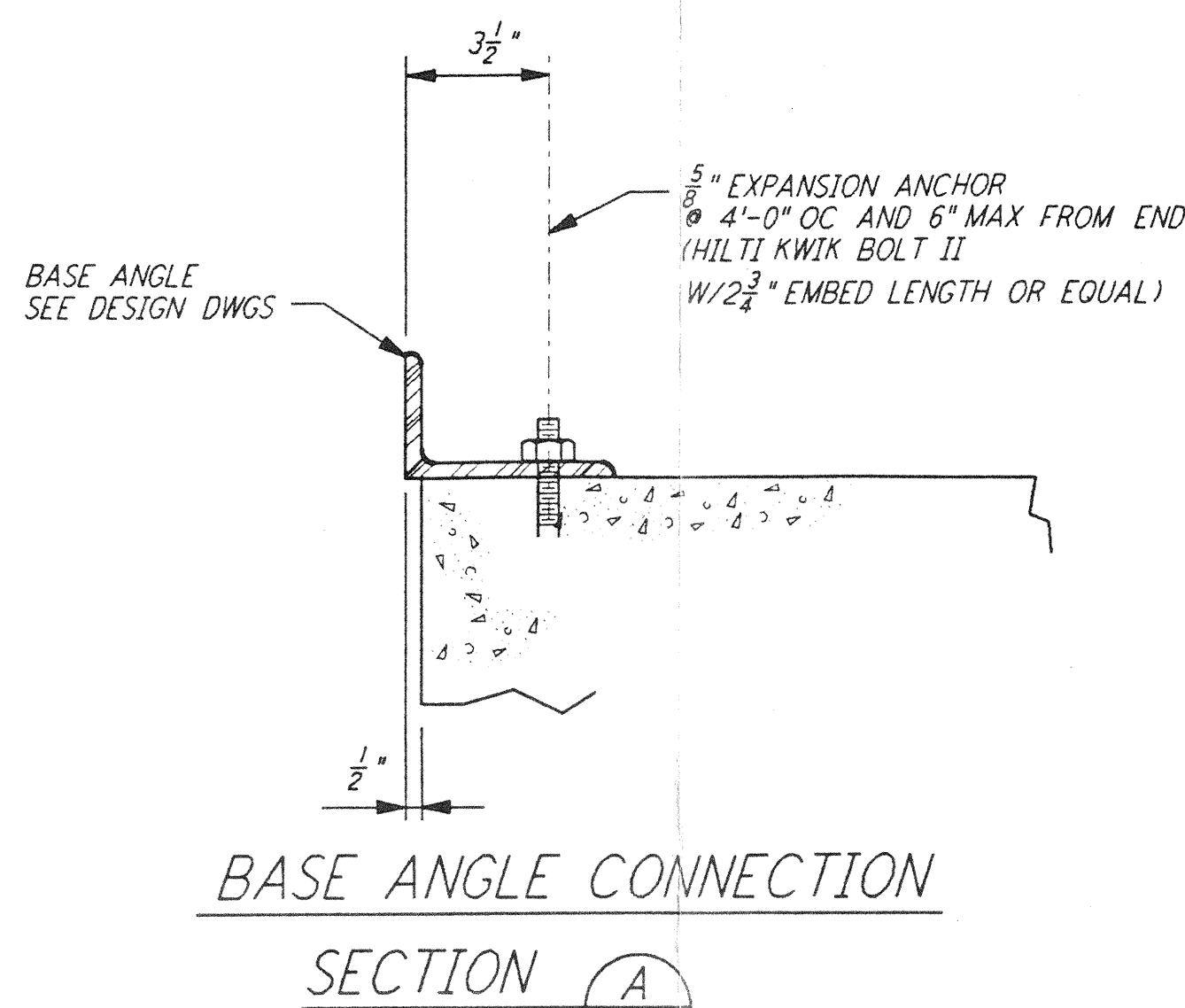
**NOTES:**

1. BOLT MATERIAL SHALL BE IN ACCORDANCE WITH ASTM A307, UNLESS OTHERWISE SPECIFIED.
2. USE UNIFIED NATIONAL COARSE THREAD, CLASS 2 FIT.
3. USE HEAVY DOUBLE CHAMFER HEX NUTS UP TO 1", AND HEAVY FLAT FACE HEX NUTS LARGER THAN 1".
4. PROVIDE 1 HEX NUT FOR EACH BOLT, UNLESS OTHERWISE NOTED ON DESIGN DRAWINGS.
5. PLATE WASHER MATERIAL SHALL BE ASTM A36, UNLESS OTHERWISE NOTED.
6. FABRICATOR SHALL BUNDLE AND TAG BOLTS BY INDIVIDUAL FOUNDATIONS OR MEMBERS. TAGS SHALL BE WEATHER RESISTANT, WITH MARKS AT LEAST 1/2" HIGH, AND FIRMLY WIRED TO BUNDLES.
7. SLEEVES SHALL NOT BE USED UNLESS SPECIFIED ON THE DESIGN DRAWINGS.

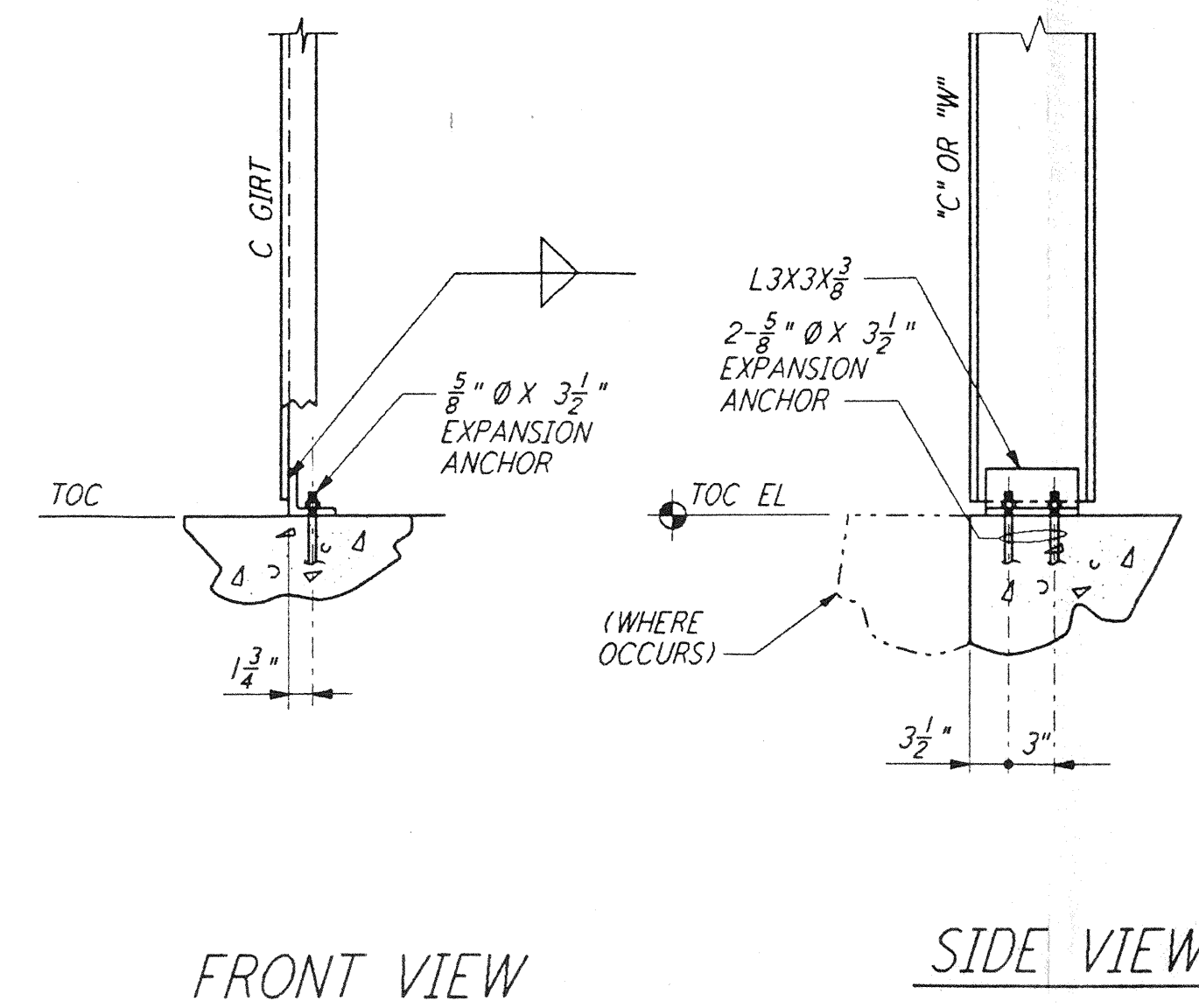


TYPE 1 TYPE 2  
 ANCHOR BOLTS DETAILS (1)

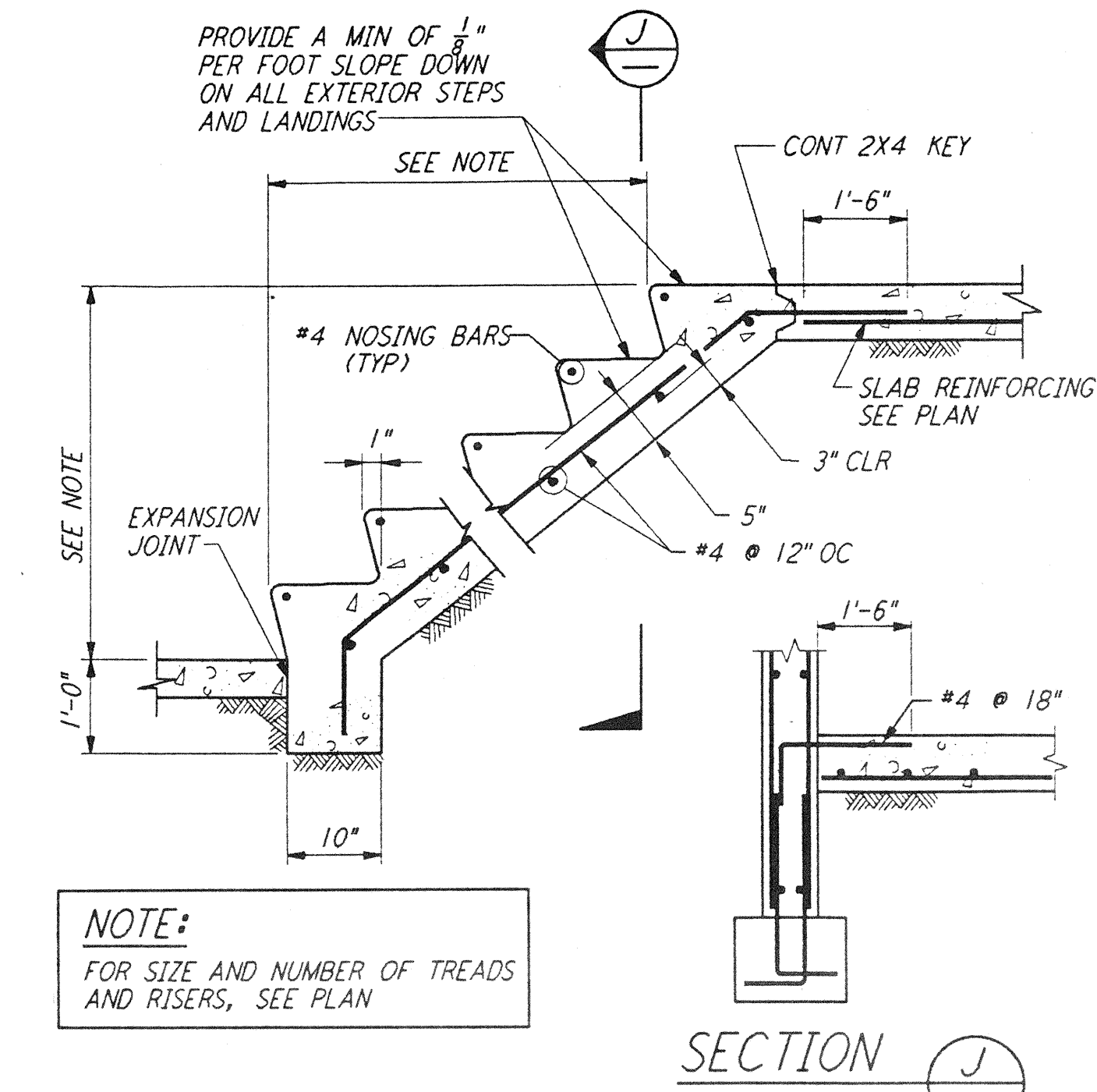
DIA D	PLATE WASHER	SLEEVE IF REQD		THREAD LENGTH	DIA D
		DIA	LENGTH		
1/2"		2"	5"	1 3/4"	1/2"
5/8"		2"	5"	2 1/8"	5/8"
3/4"		2"	7"	2 1/2"	3/4"
7/8"		2"	7"	2 7/8"	7/8"
1"	2 1/2" X 2 1/2" X 5/16"	3"	10"	3 1/4"	1"
1 1/8"	3" X 3" X 1/2"	3"	10"	3 5/8"	1 1/8"
1 1/4"	3 1/2" X 3 1/2" X 1/2"	3"	10"	4"	1 1/4"
1 3/8"	3 1/2" X 3 1/2" X 1/2"	4"	15"	4 3/8"	1 3/8"
1 1/2"	3 3/4" X 3 3/4" X 5/8"	4"	15"	4 3/4"	1 1/2"



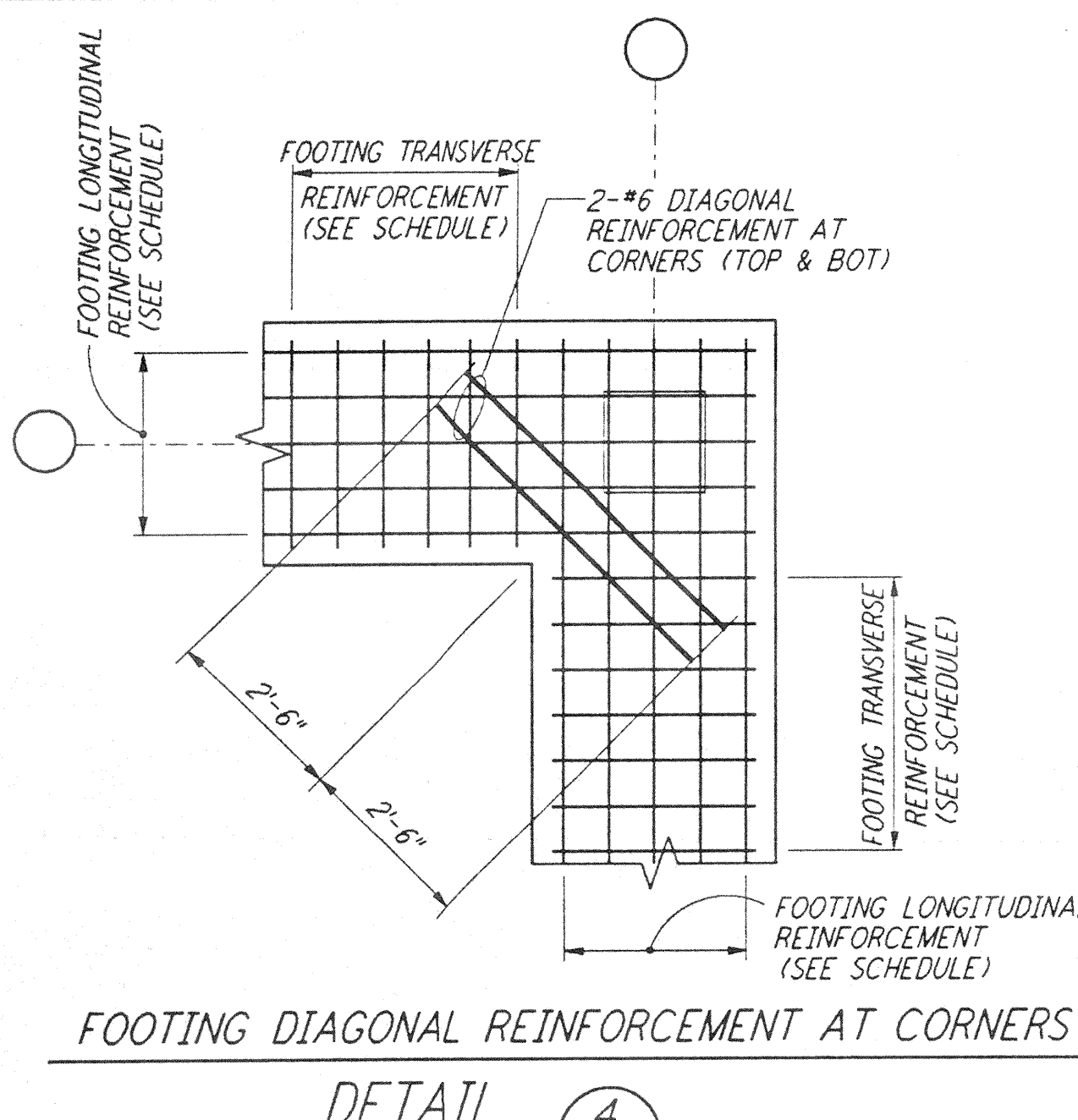
BASE ANGLE CONNECTION  
 SECTION (A)



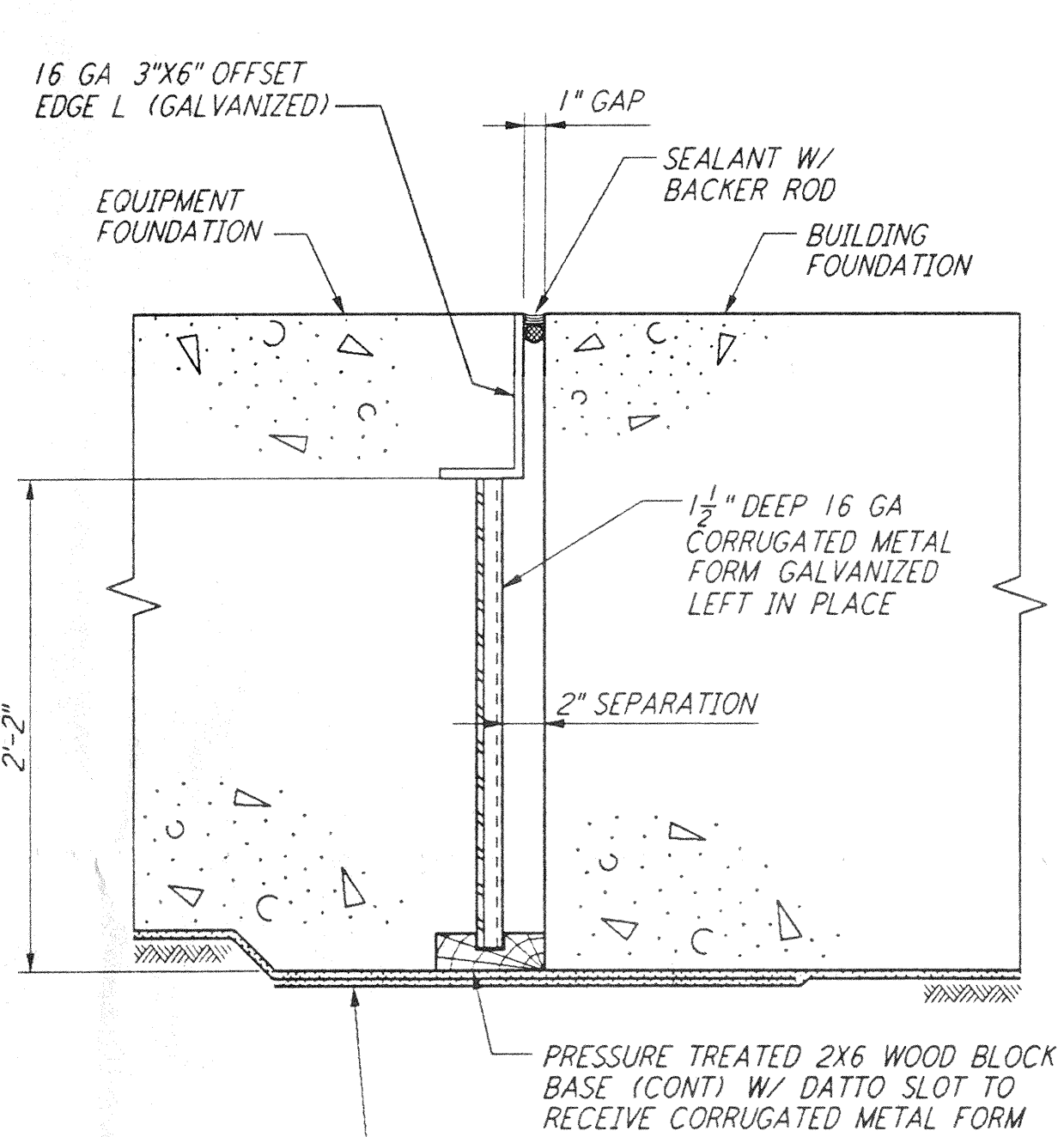
FRONT VIEW SIDE VIEW  
 DETAIL (2)



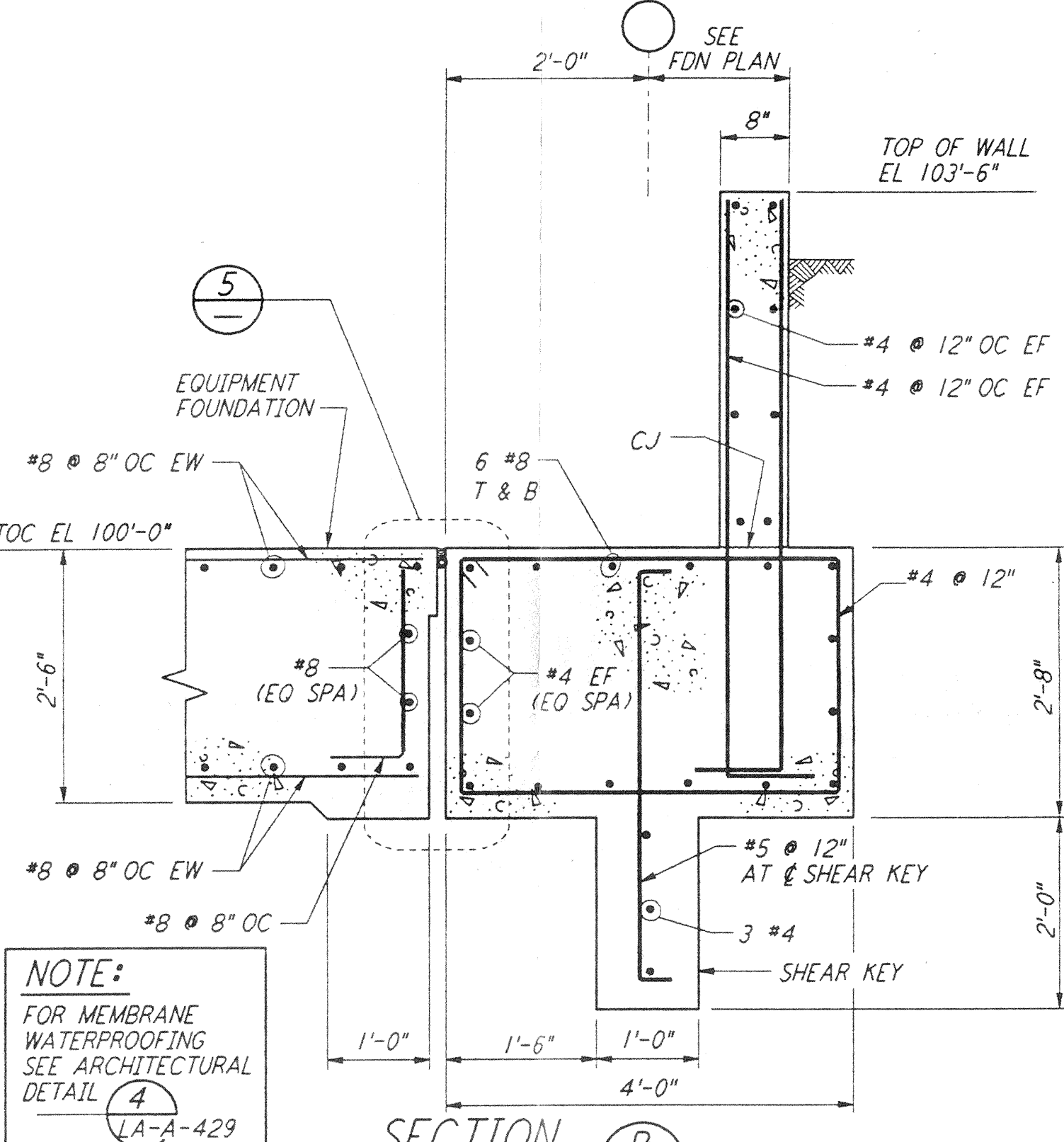
CONCRETE STAIRS ON GRADE (3)  
 SECTION (J)



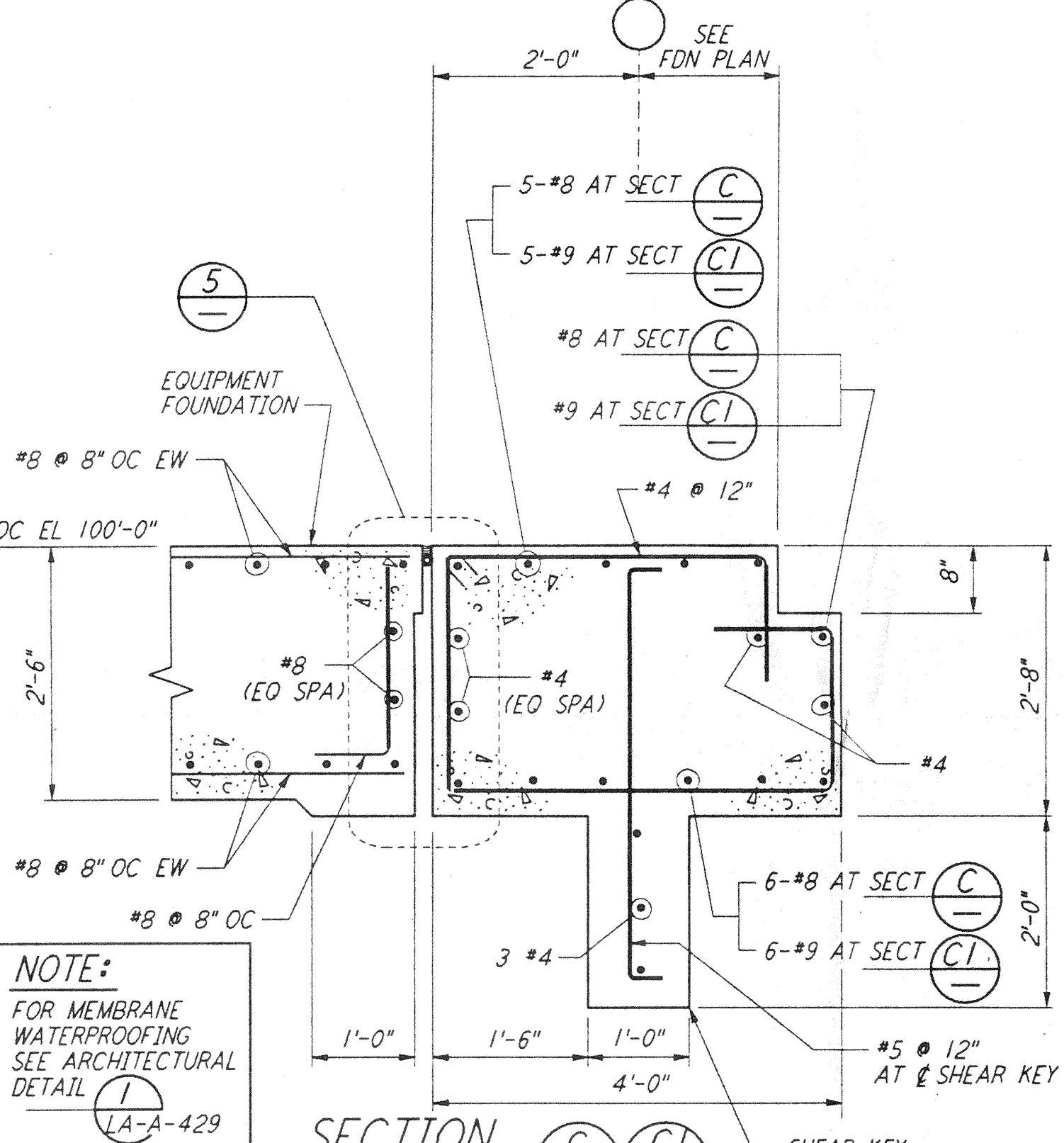
FOOTING DIAGONAL REINFORCEMENT AT CORNERS  
 DETAIL (4)



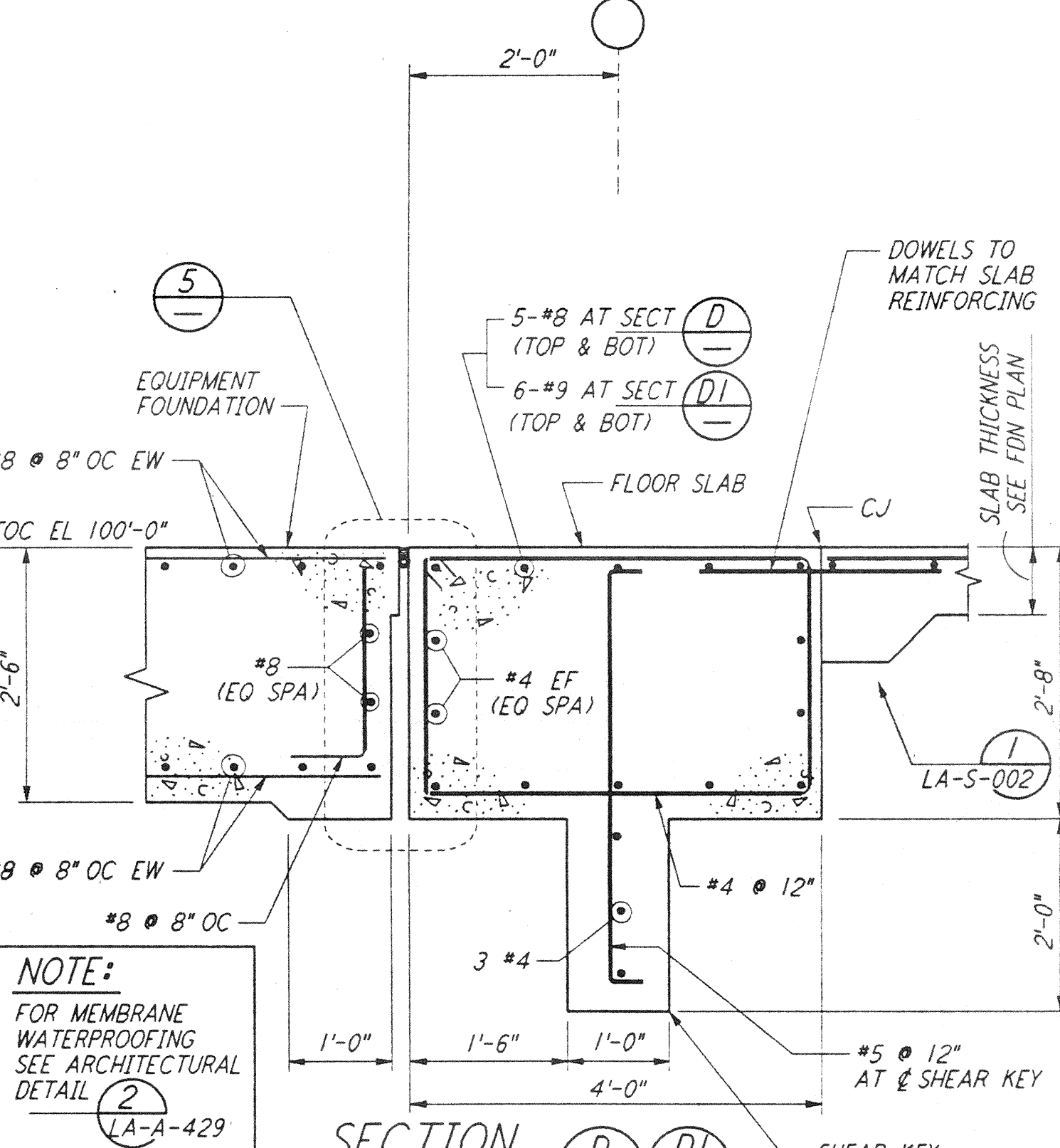
EQUIPT FDN & BLDG FDN INTERFACE  
 DETAIL (5)



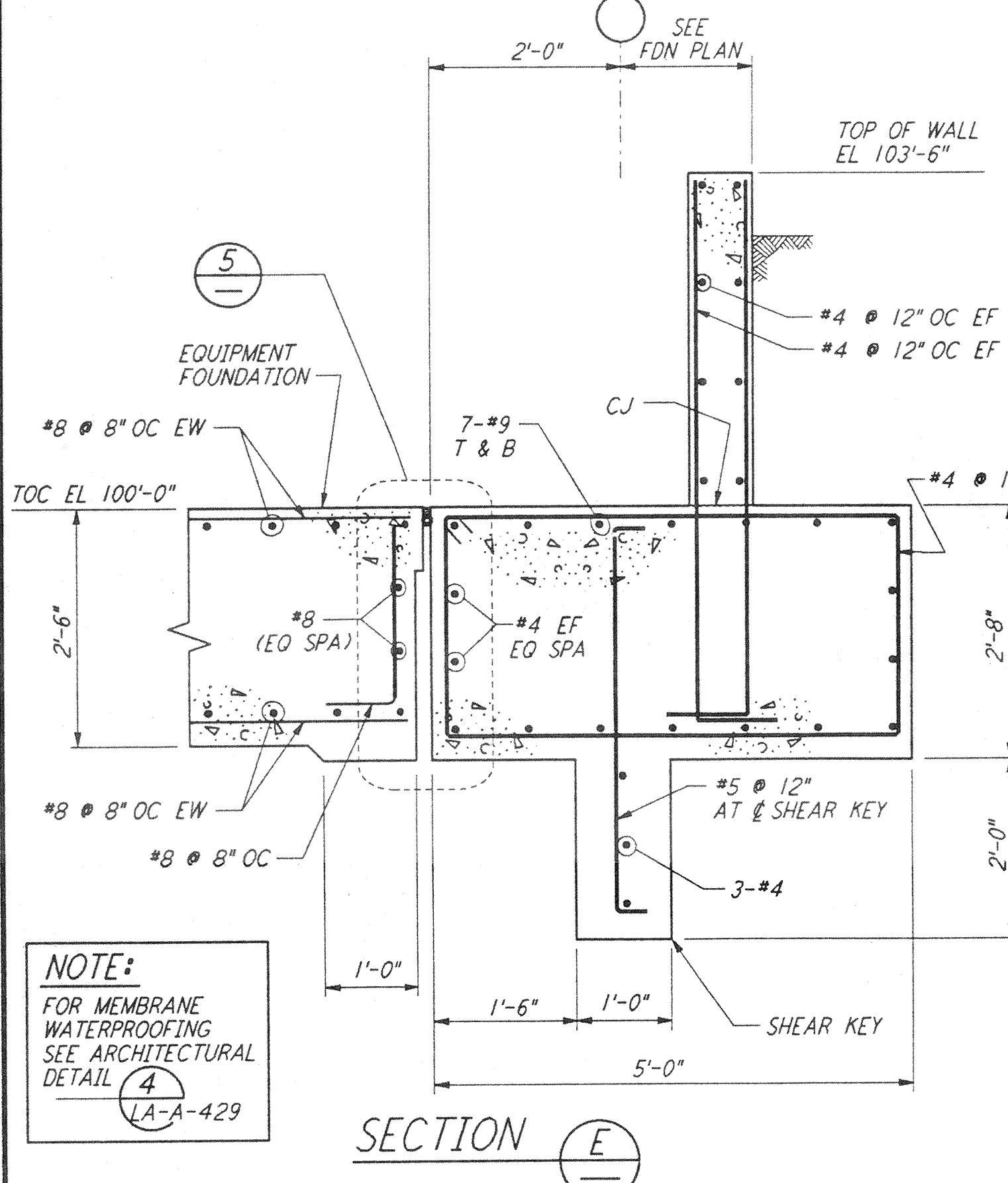
SECTION (B)



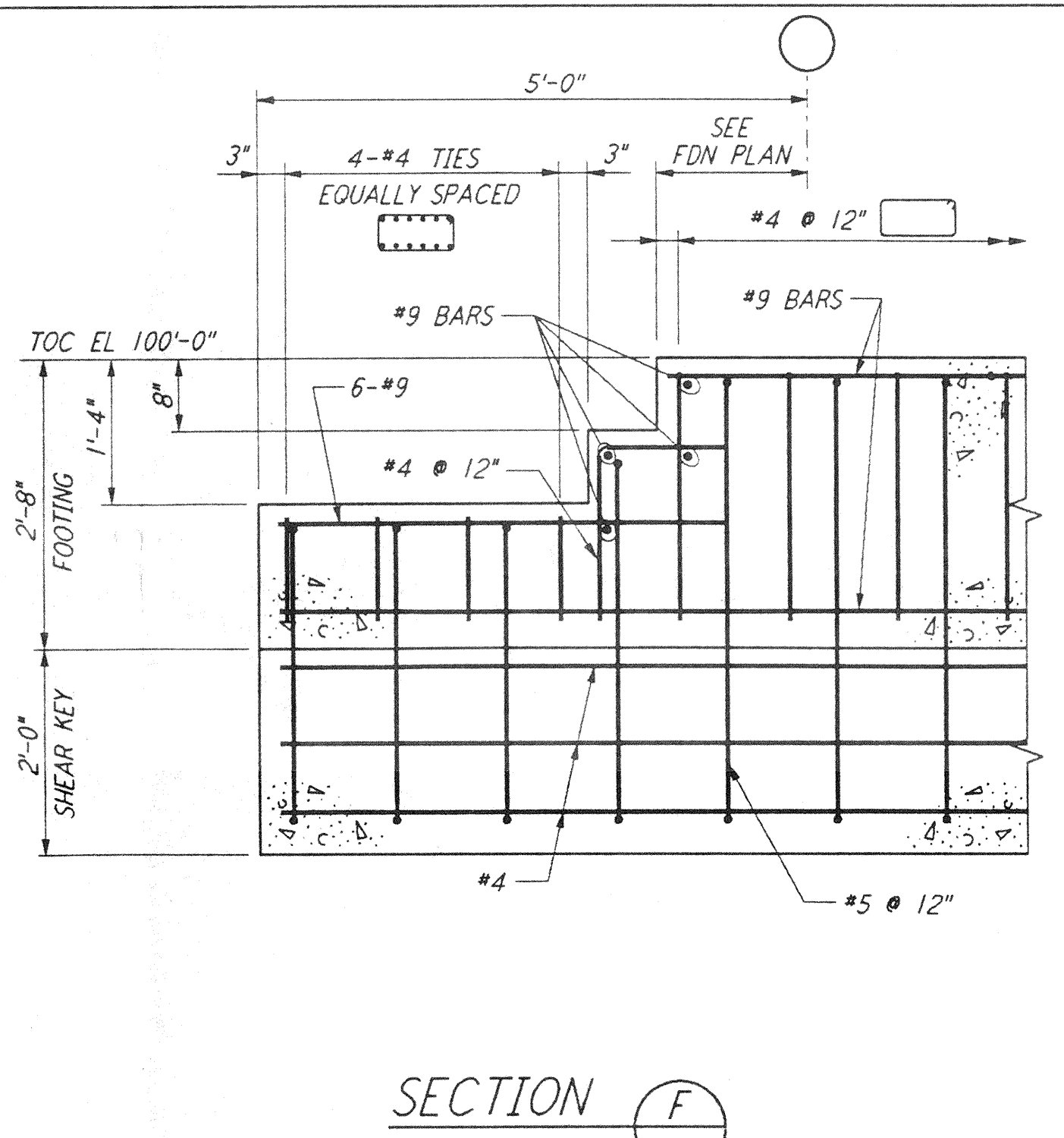
SECTION (C)



SECTION (D)



SECTION (E)



SECTION (F)

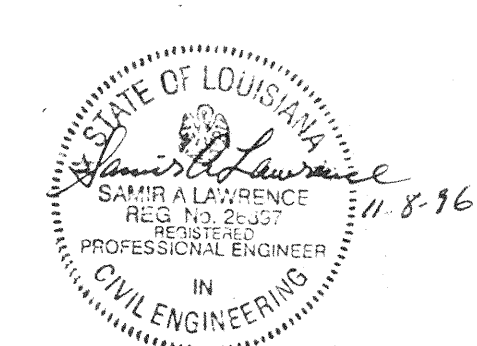
**NOTE:**  
 1. FOR GENERAL NOTES, ABBREVIATIONS AND SYMBOLS SEE DRAWING LA-S-001.

not be reproduced, copied, loaned, exhibited, or used in any other way, except by written consent from PARSONS to the borrower.

This document and the design it covers are the property of PARSONS. They are loaned only with the borrower's expressed written agreement that they will

DRAWING NO.	DESCRIPTION	NO.	DATE	BY	CHKD	ENGR	PROJ	DESCRIPTION

ISSUED FOR CONSTRUCTION	MCS	11-15-96
CHECKED	BM	11-15-96
ENGINEER	AP	11-15-96
PROJ	BM	11/15/96



LASER INTERFEROMETER GRAVITATIONAL-WAVE OBSERVATORY SITE NO. 2 - LIVINGSTON, LOUISIANA		
TITLE	SCALE	CONTRACT NUMBER
STRUCTURAL STANDARD CONCRETE DETAILS SHEET 2	NONE	PP150969
SHEET NUMBER		PROJECT NUMBER
LA-S-003		8094