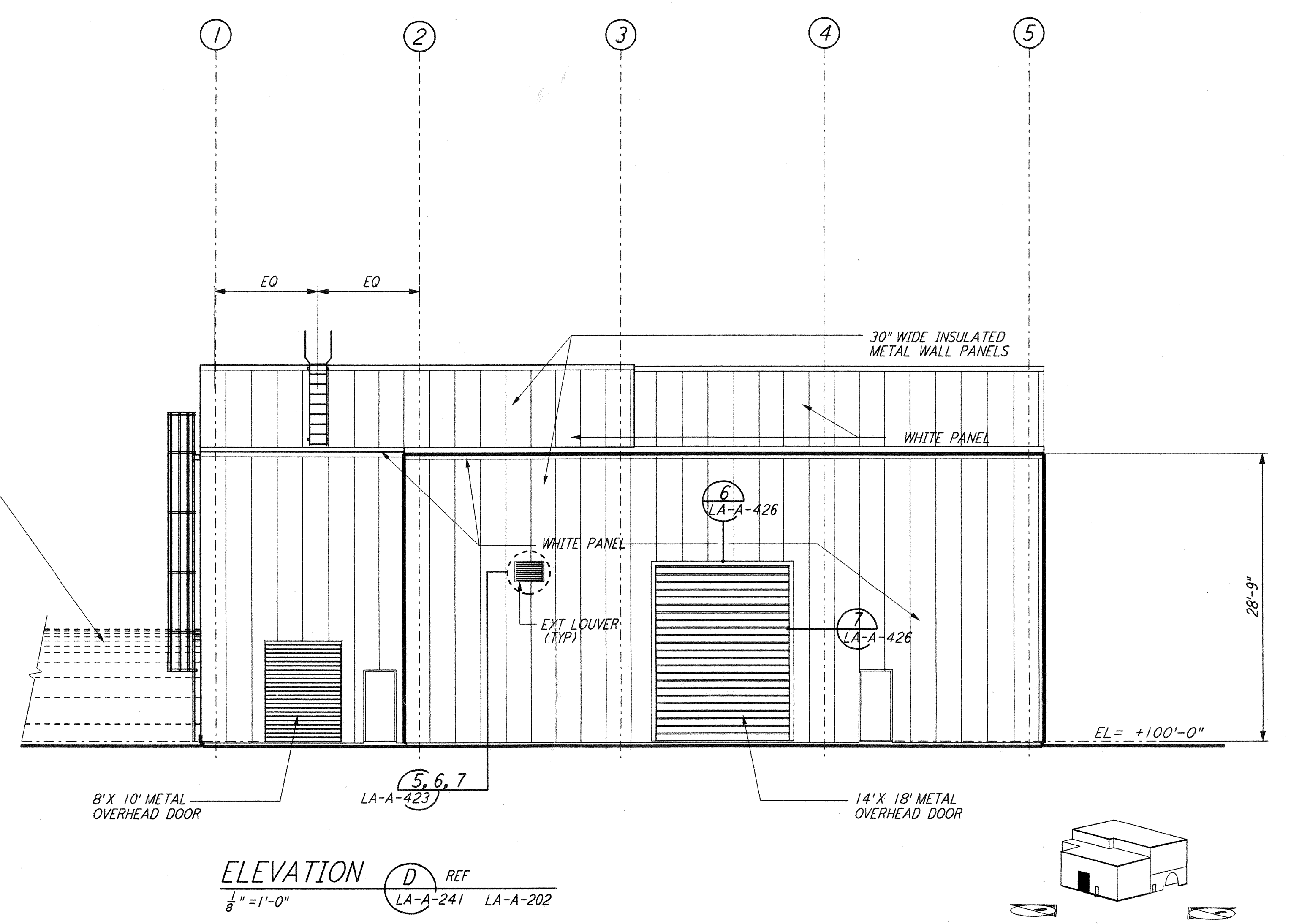
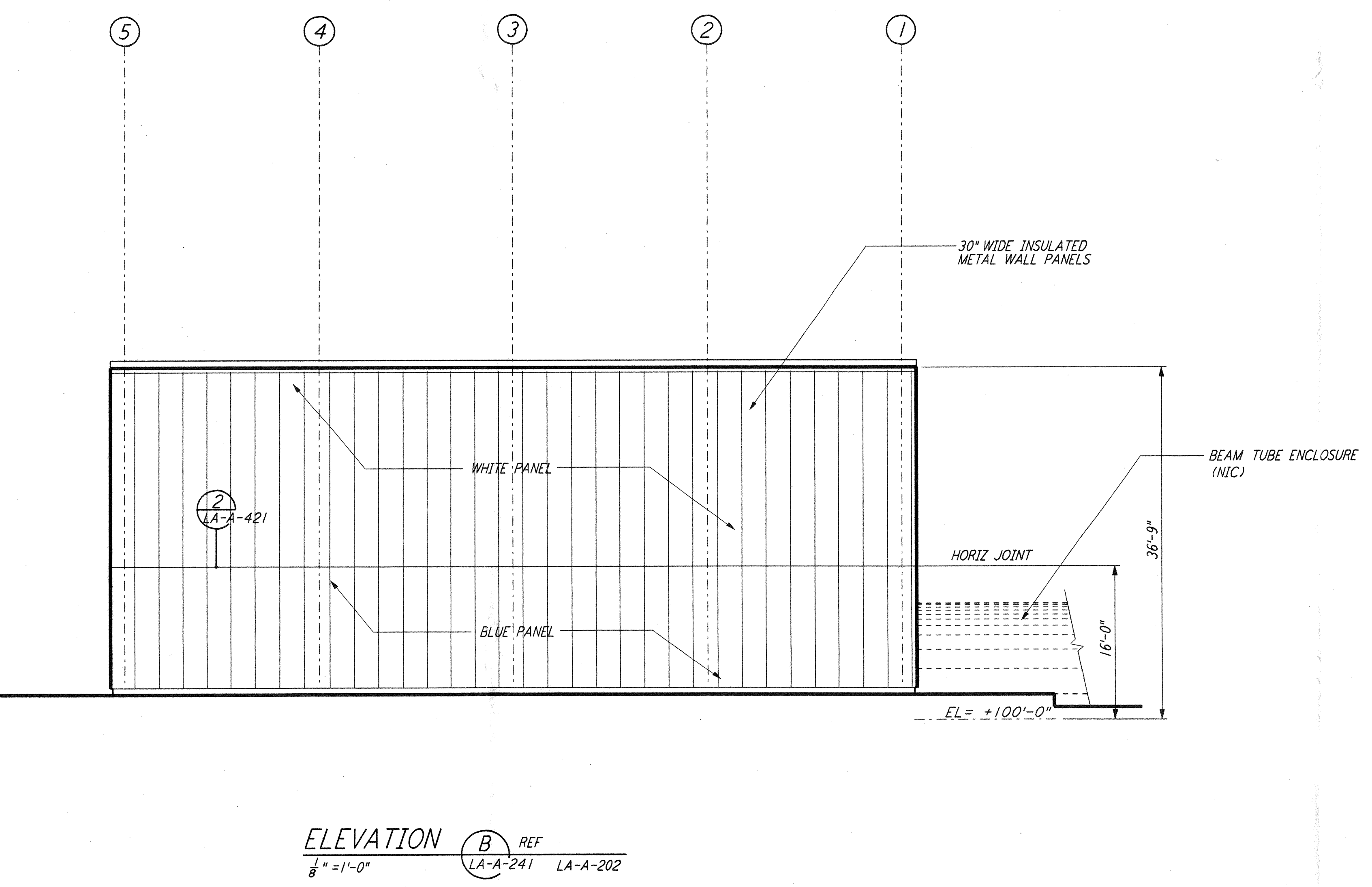
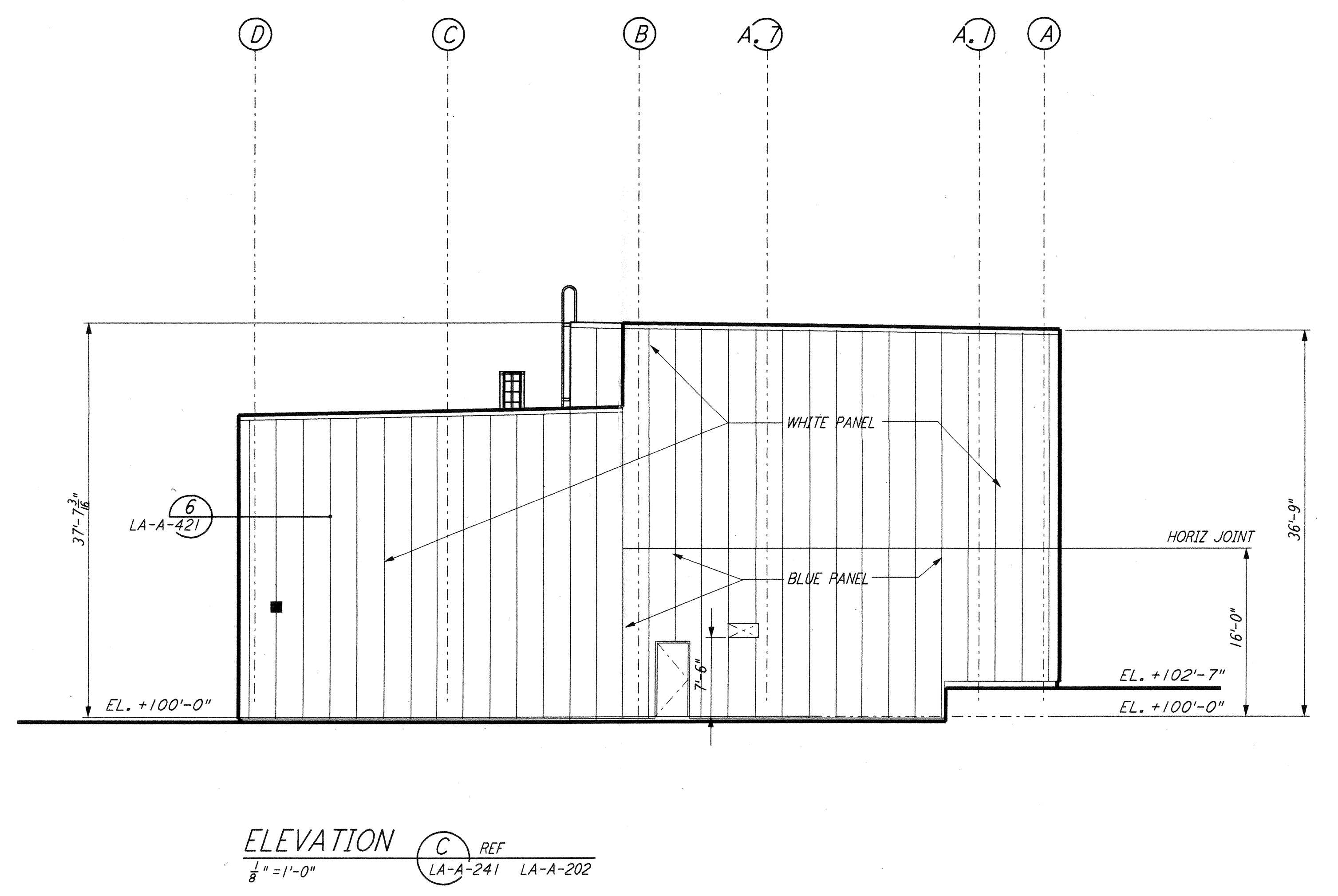
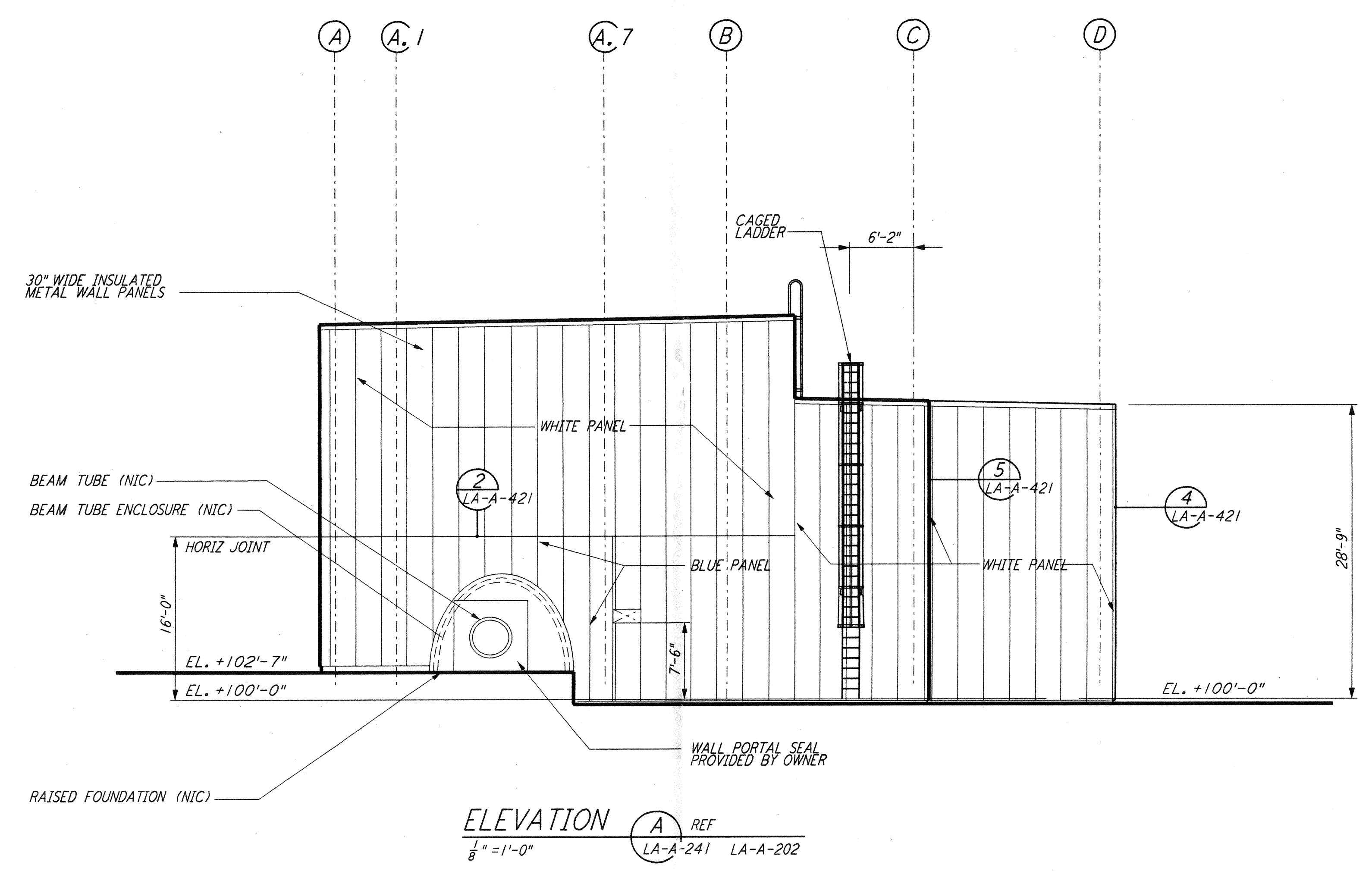


not be reproduced, copied, loaned, exhibited, or used in any other way, except by written consent from PARSONS to the borrower.

This document and the design it covers are the property of PARSONS. They are loaned only with the borrower's expressed written agreement that they will



DATUM POINT EL +100.00 = 57.46' (END STATION "B")
 DATUM POINT EL +100.00 = 61.49' (END STATION "A")

LIGO-D960895-01-0

NO.	DATE	BY	CHKD	ENGR	PROJ	DESCRIPTION
1	08-07-98	SJM	CKT			ISSUED FOR AS-BUILT

ISSUED FOR CONSTRUCTION	
DRAWN	CKT 11-15-96
CHECKED	TB 11-15-96
ENGINEER	SF 11-15-96
PROJ	TDM 11-15-96
AS-BUILT DRAWINGS	

PARSONS
 100 WEST WALNUT STREET
 PASADENA, CALIFORNIA

LIGO
 CALIFORNIA INSTITUTE OF TECHNOLOGY
 MASSACHUSETTS INSTITUTE OF TECHNOLOGY

LASER INTERFEROMETER
 GRAVITATIONAL-WAVE OBSERVATORY
 SITE NO. 2 - LIVINGSTON, LOUISIANA

SCALE	CONTRACT NUMBER	PROJECT NUMBER
AS NOTED	PP150969	8094
SHEET NUMBER		REVISIONS
LA-A-241		