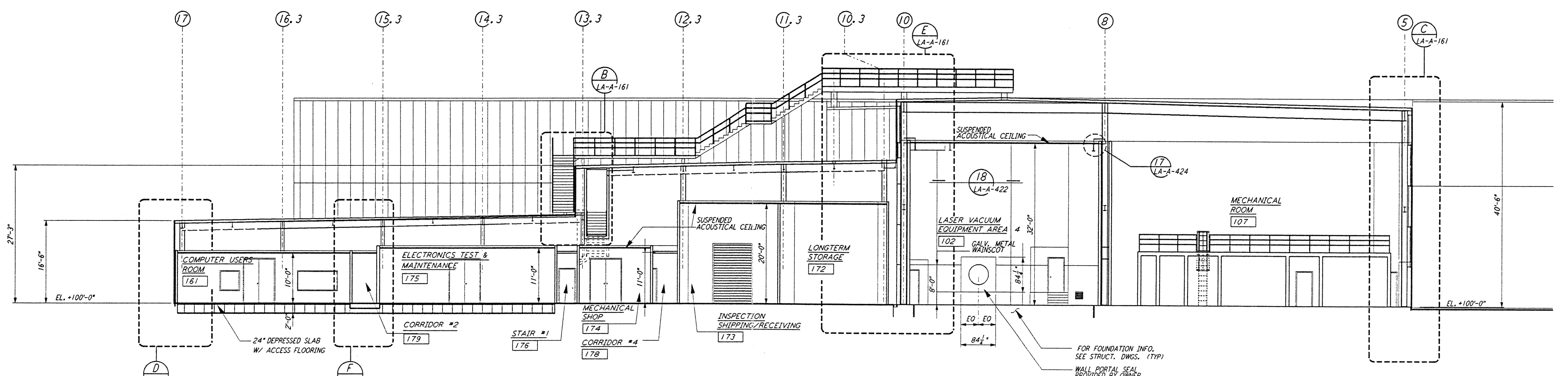
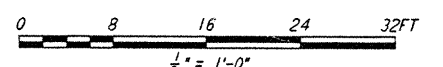


SECTION A REF  
 LA-A-151 LA-A-101 LA-A-131  
 3/8" = 1'-0"



SECTION B REF  
 LA-A-151 LA-A-101 LA-A-107  
 3/8" = 1'-0"

DATUM POINT EL +100.00 = 61.44' (LVEA)  
 DATUM POINT EL +100.00 = 61.44' (OSB)



LIGO-D960886-B-0

REFERENCES

NO.	DATE	BY	CHKD	ENGR	PROJ	DESCRIPTION
B	6-14-96	CKT	BK	SF	TDM	FINAL DESIGN REVIEW
A	10/31/95	SF	SF	TDM		PRELIMINARY DESIGN REVIEW

REVISIONS

NO.	DATE	BY	CHKD	ENGR	PROJ	DESCRIPTION
B	6-14-96	CKT	BK	SF	TDM	FINAL DESIGN REVIEW
A	10/31/95	SF	SF	TDM		PRELIMINARY DESIGN REVIEW

DRAWN	CKT/DS
CHECKED	
ENGINEER	
PROJ	

**PARSONS**  
 100 WEST WALNUT STREET  
 PASADENA, CALIFORNIA

**LIGO**  
 CALIFORNIA INSTITUTE OF TECHNOLOGY  
 MASSACHUSETTS INSTITUTE OF TECHNOLOGY

LASER INTERFEROMETER  
 GRAVITATIONAL-WAVE OBSERVATORY  
 SITE NO. 2 - LIVINGSTON, LOUISIANA

ARCHITECTURAL  
 CORNER STATION  
 LVEA & OSB SECTIONS  
 SHEET 1

AS NOTED PP150969 8094  
 SHEET NUMBER  
**LA-A-151**

This document and the design it covers are the property of PARSONS. They are loaned only with the borrower's expressed written agreement that they will not be reproduced, copied, loaned, exhibited, or used in any other way, except by written consent from PARSONS to the borrower.

This document and the design it covers are the property of PARSONS. They are loaned only with the borrower's expressed written agreement that they will not be reproduced, copied, loaned, exhibited, or used in any other way, except by written consent from PARSONS to the borrower.

I:\ligo\site2\or\l1a151.d32

I:\ligo\site2\or\l1a151.d32