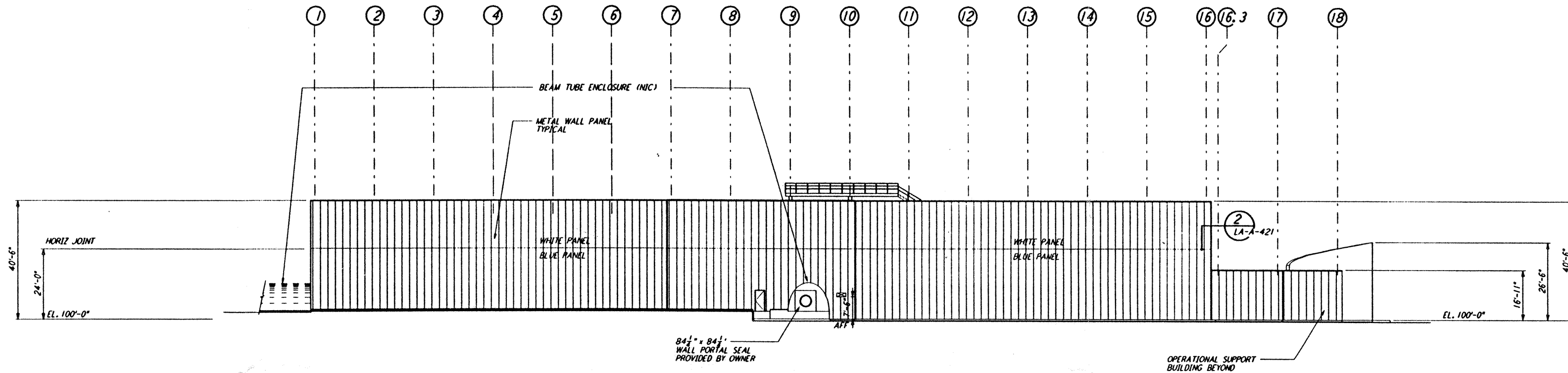
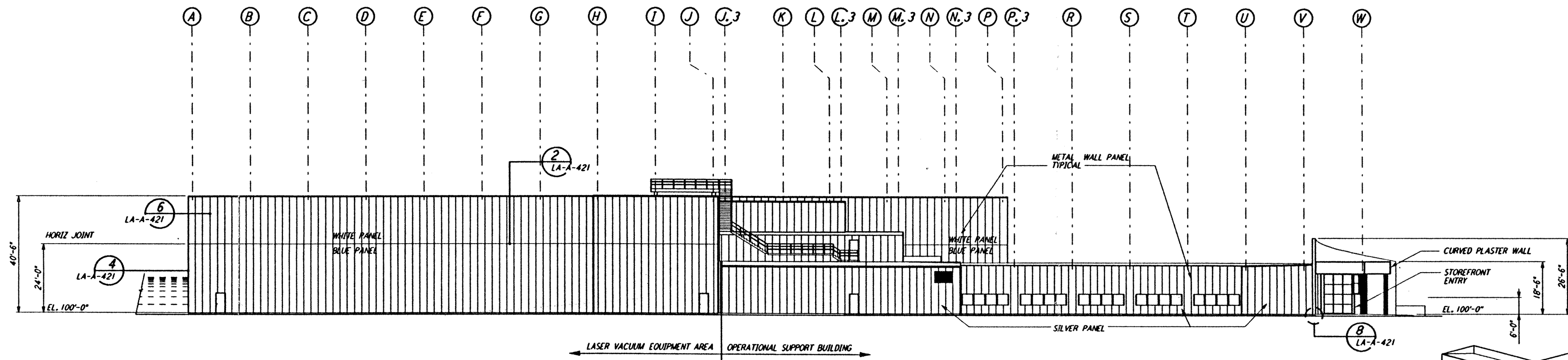


not be reproduced, copied, loaned, exhibited, or used in any other way, except by written consent from PARSONS to the borrower.

This document and the design it covers are the property of PARSONS. They are loaned only with the borrower's expressed written agreement that they will not be reproduced, copied, loaned, exhibited, or used in any other way, except by written consent from PARSONS to the borrower.



ELEVATION A REF
 LA-A-141 LA-A-101
 LA-A-107
 1/8" = 1'-0"



ELEVATION B REF
 LA-A-141 LA-A-101
 LA-A-107
 1/8" = 1'-0"

DATUM POINT EL +100.00 = 61.44' (LVEA)
 DATUM POINT EL +100.00 = 61.44' (OSB)
 KEY PLAN
 0 8 16 24 32 40 48 56 64 FT
 1/8" = 1'-0"

NO.	DATE	BY	CHKD	ENGR	PROJ	DESCRIPTION
C	7-24-96	CKT	TB	BK	TDM	ISSUED FOR BID
B	6-14-96	CKT	BK	SF	TDM	FINAL DESIGN REVIEW
A	10/31/95	SF	SF	TDM		PRELIMINARY DESIGN REVIEW

DRAWN	CKT
CHECKED	
ENGINEER	
PROJ	

PARSONS
 100 WEST WALNUT STREET
 PASADENA, CALIFORNIA

LIGO
 CALIFORNIA INSTITUTE OF TECHNOLOGY
 MASSACHUSETTS INSTITUTE OF TECHNOLOGY

LASER INTERFEROMETER
 GRAVITATIONAL-WAVE OBSERVATORY
 SITE NO. 2 - LIVINGSTON, LOUISIANA
 ARCHITECTURAL
 CORNER STATION
 LVEA & OSB ELEVATIONS
 SHEET 1
 AS NOTED
 CONTRACT NUMBER: PP150969
 PROJECT NUMBER: 8094
LA-A-141

LIGO-D960883-C-O

Tue Jul 23 09:49:56 1996 s3-v18b2 J:\PLOTS\QUEUES\18B2\AR141.PRF