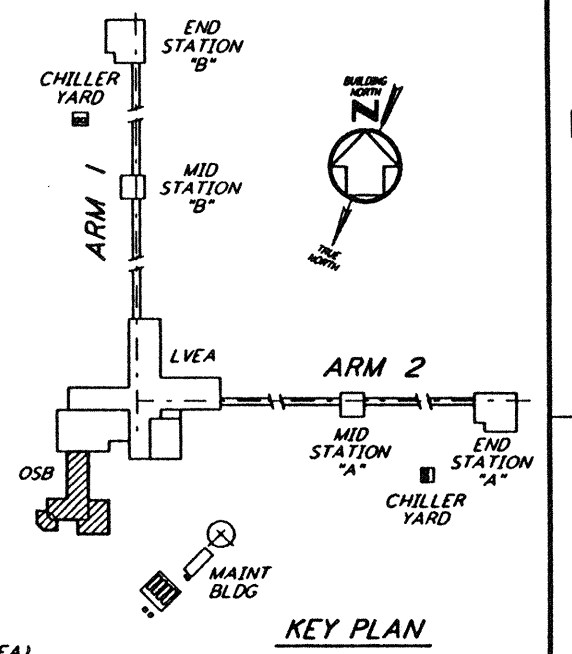
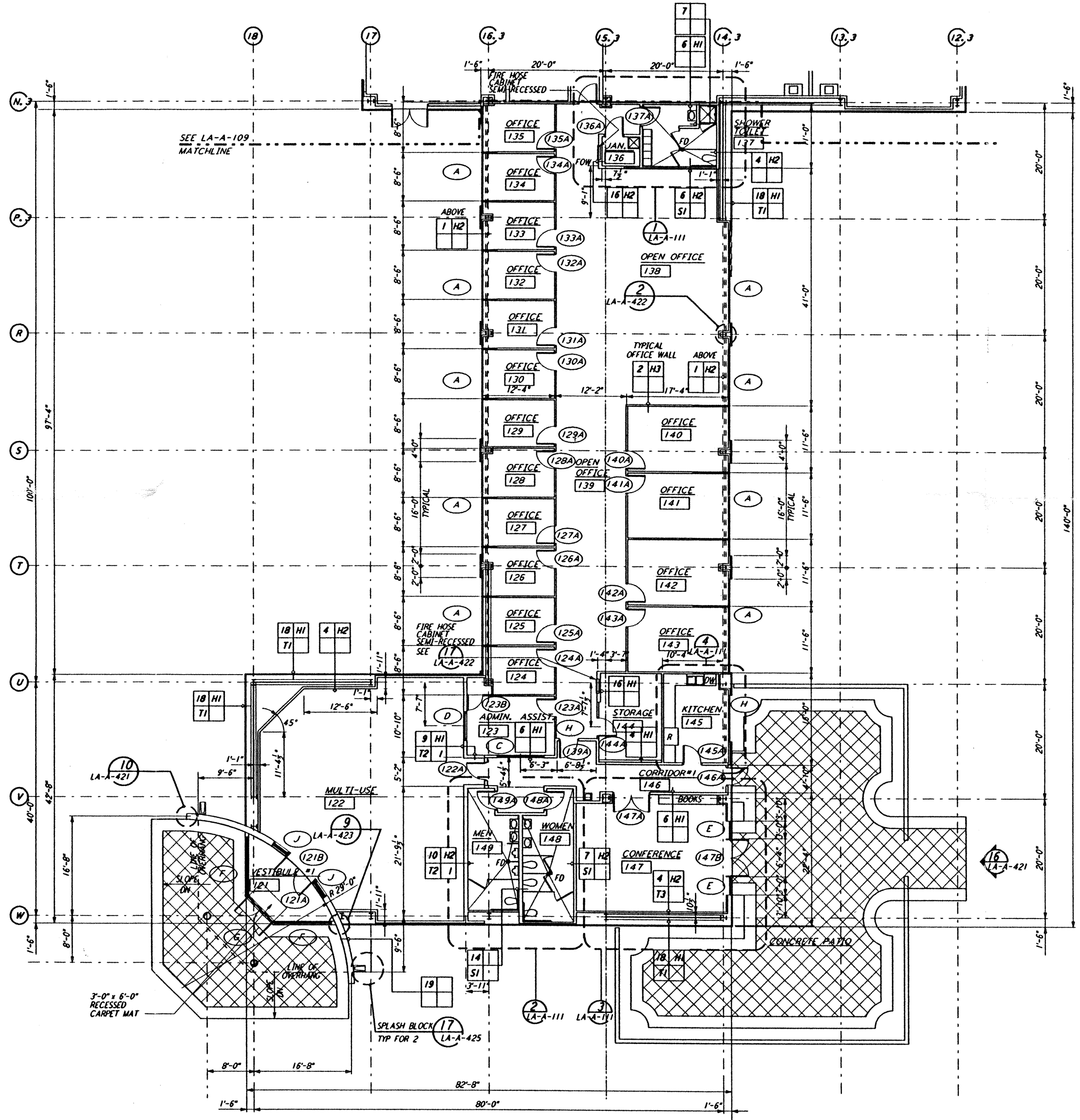


NOTE: SEE SPECIFICATIONS FOR ADDITIONAL INFORMATION AND SCHEDULES



0 8 16 24 32 FT  
 1" = 1'-0"  
 DATUM POINT EL +100.00 = 61.44' (LVEA)  
 DATUM POINT EL +100.00 = 61.44' (OSB)

This document and the design it covers are the property of PARSONS. They are loaned only with the borrower's expressed written agreement that they will not be reproduced, copied, loaned, exhibited, or used in any other way, except by written consent from PARSONS to the borrower.

NO.	DATE	BY	CHKD	ENGR	PROJ	DESCRIPTION
C	7-24-96	CKT	TB	BK	TDM	ISSUED FOR BID
B	6-14-96	CKT	BK	SF	TDM	FINAL DESIGN REVIEW
A	10/31/95	SF	SF	TDM	TDM	PRELIMINARY DESIGN REVIEW

DRAWN	CKT
CHECKED	
ENGINEER	
PROJ	

**PARSONS**  
 100 WEST WALNUT STREET  
 PASADENA, CALIFORNIA

**LIGO**  
 CALIFORNIA INSTITUTE OF TECHNOLOGY  
 MASSACHUSETTS INSTITUTE OF TECHNOLOGY

LASER INTERFEROMETER GRAVITATIONAL-WAVE OBSERVATORY SITE NO. 2 - LIVINGSTON, LOUISIANA			
TITLE	ARCHITECTURAL CORNER STATION OSB PARTIAL FLOOR PLAN SHEET 1	SCALE	AS NOTED
PROJECT NUMBER	LA-A-108	CONTRACT NUMBER	PP150969
REVISIONS		PROPERTY NUMBER	8094