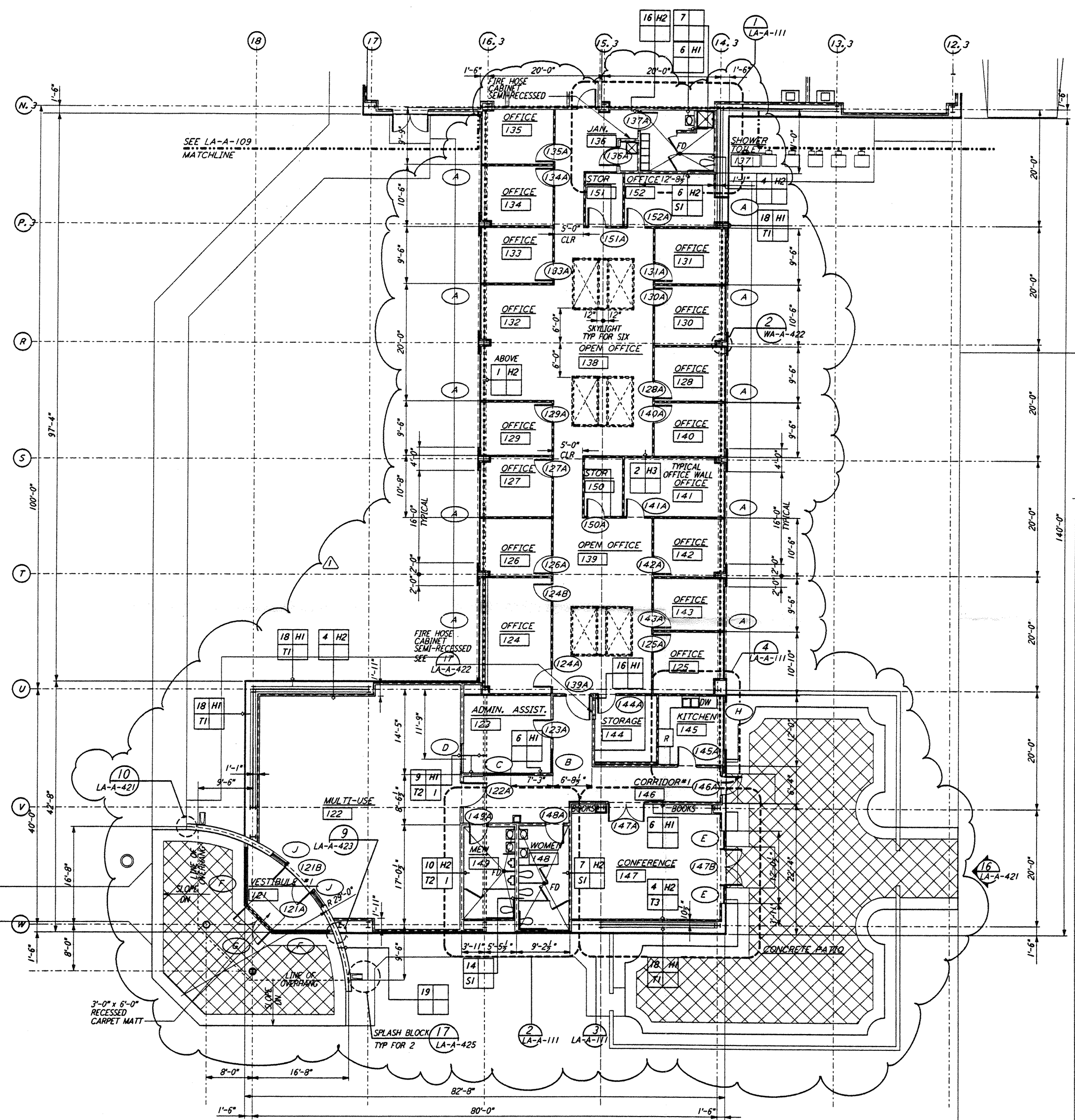
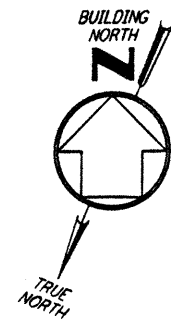
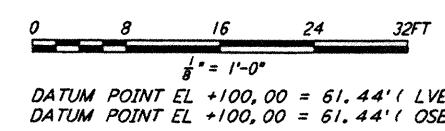


NOTE: SEE SPECIFICATIONS FOR ADDITIONAL INFORMATION AND SCHEDULES

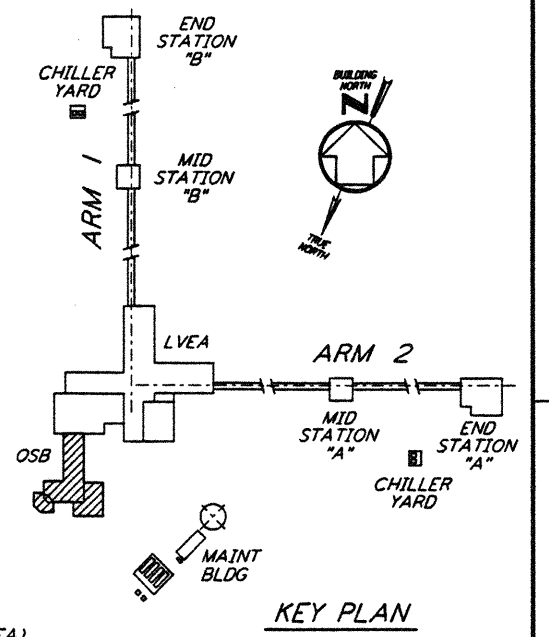


This document and the design it covers are the property of PARSONS. They are loaned only with the borrower's expressed written agreement that they will not be reproduced, copied, loaned, exhibited, or used in any other way, except by written consent from PARSONS to the borrower.

LIGO-D960873-01-0

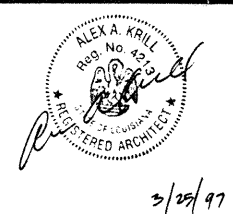


DATUM POINT EL +100.00 = 61.44' (LVEA)
 DATUM POINT EL +100.00 = 61.44' (OSB)



DRAWING NO.	DESCRIPTION	NO.	DATE	BY	CHKD	ENGR	PROJ	OSB REVISION	DESCRIPTION
		1	2-28-97	CKT	TB	AK	TDM	OSB	REVISION

ISSUED FOR CONSTRUCTION	
DRAWN	CKT 11-15-96
CHECKED	TB 11-15-96
ENGINEER	SF 11-15-96
PROJ	MDW 11-15-96



PARSONS
 100 WEST WALNUT STREET
 PASADENA, CALIFORNIA

LIGO
 CALIFORNIA INSTITUTE OF TECHNOLOGY
 MASSACHUSETTS INSTITUTE OF TECHNOLOGY

LASER INTERFEROMETER
 GRAVITATIONAL-WAVE OBSERVATORY
 SITE NO. 2 - LIVINGSTON, LOUISIANA

TITLE	ARCHITECTURAL CORNER STATION OSB PARTIAL FLOOR PLAN SHEET 1	SCALE	AS NOTED	CONTRACT NUMBER	PPI50969	PROJECT NUMBER	8094
LA-A-108						8094	