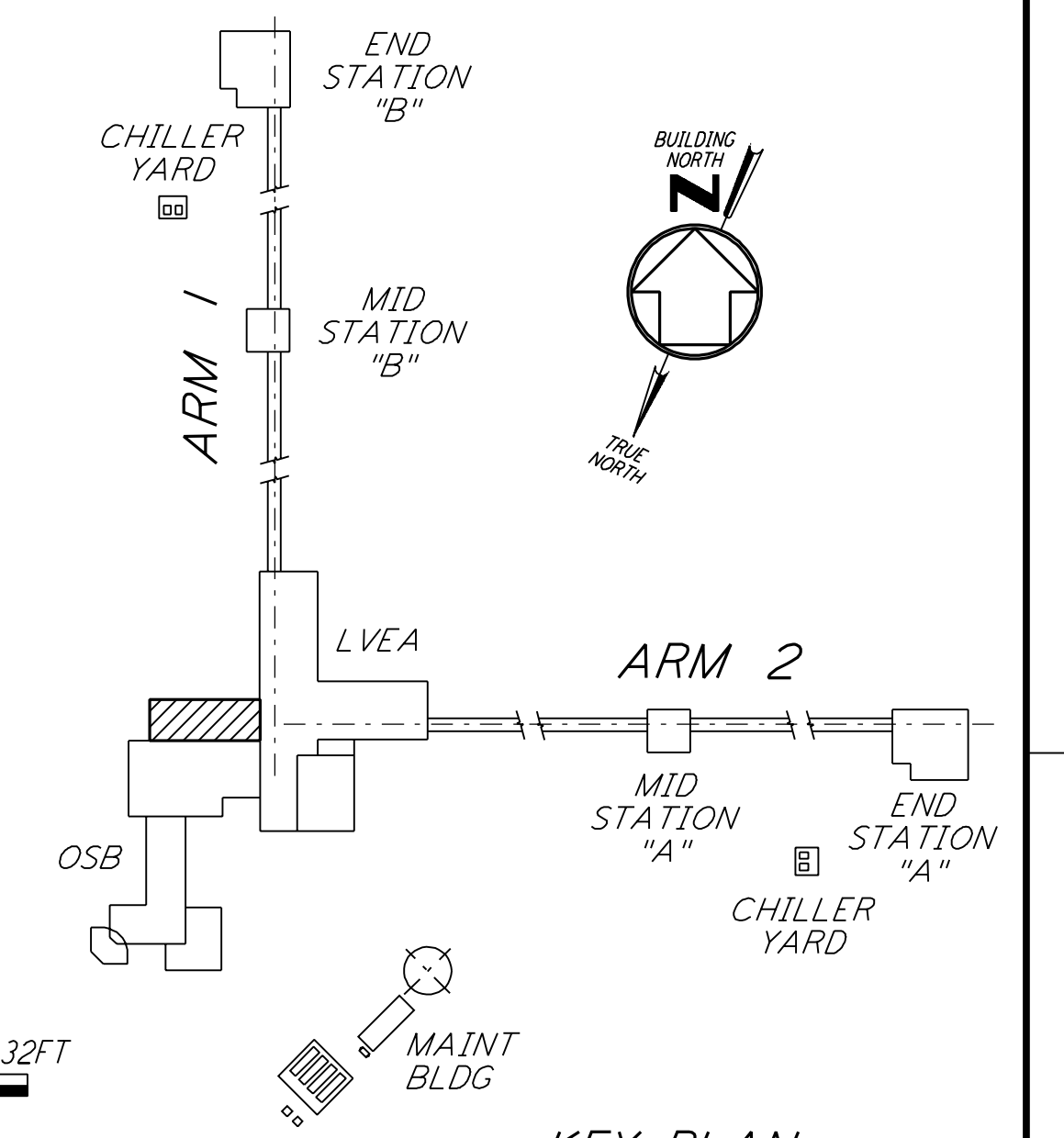
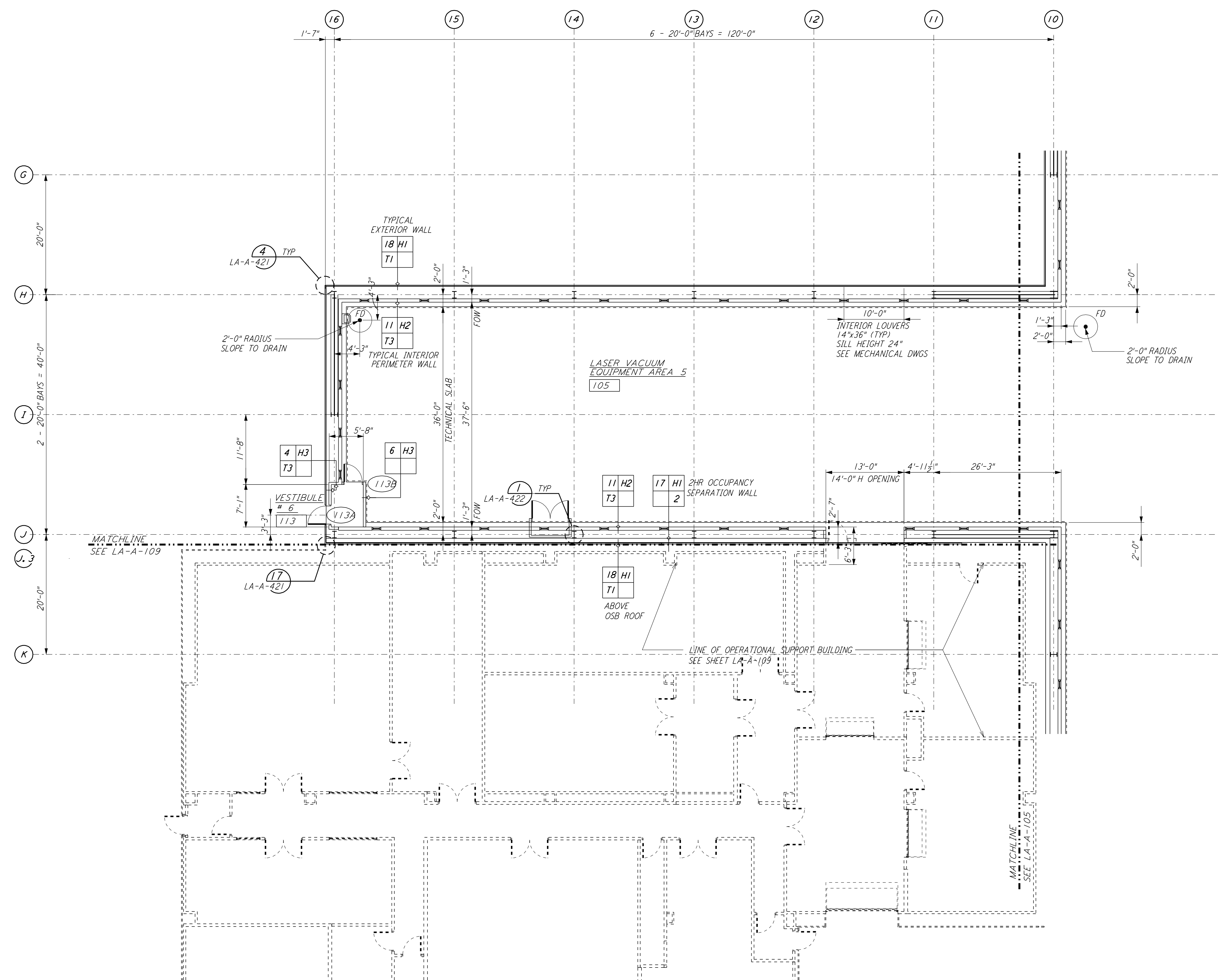
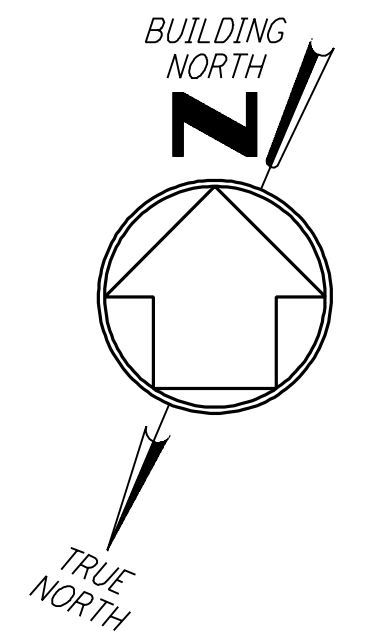


- NOTE:
 1. SEE SPECIFICATIONS FOR ADDITIONAL INFORMATION AND SCHEDULES
 2. PROVIDE CONTROL JOINTS @ 40'-0" O.C. MAX THROUGHOUT LVEA AREAS - AT GRID LINES AND WHERE OTHERWISE INDICATED.



0 8 16 24 32 FT
 1/8" = 1'-0"
 DATUM POINT EL +100.00 = 61.44' (LVEA)
 DATUM POINT EL +100.00 = 61.44' (OSB)

KEY PLAN
LIGO-D960870-01-0

This document and the design it covers are the property of PARSONS. They are loaned only with the borrower's expressed written agreement that they will not be reproduced, copied, loaned, exhibited, or used in any other way, except by written consent from PARSONS to the borrower.

NO.	DATE	BY	CHKD	ENGR	PROJ	DESCRIPTION
1	08-07-98	SJM				ISSUED FOR AS-BUILT

ISSUED FOR CONSTRUCTION		
DRAWN	CKT	11-15-96
CHECKED	TB	11-15-96
ENGINEER	SF	11-15-96
PROJ	TDM	11-15-96
AS-BUILT DRAWINGS		

PARSONS
 100 WEST WALNUT STREET
 PASADENA, CALIFORNIA

LIGO
 CALIFORNIA INSTITUTE OF TECHNOLOGY
 MASSACHUSETTS INSTITUTE OF TECHNOLOGY

LASER INTERFEROMETER
 GRAVITATIONAL-WAVE OBSERVATORY
 SITE NO. 2 - LIVINGSTON, LOUISIANA

TITLE	ARCHITECTURAL CORNER STATION LVEA PARTIAL FLOOR PLAN SHEET 3	SCALE	AS NOTED	CONTRACT NUMBER	PP150969	PROJECT NUMBER	8094
SHEET NUMBER	LA-A-104	REVISIONS					