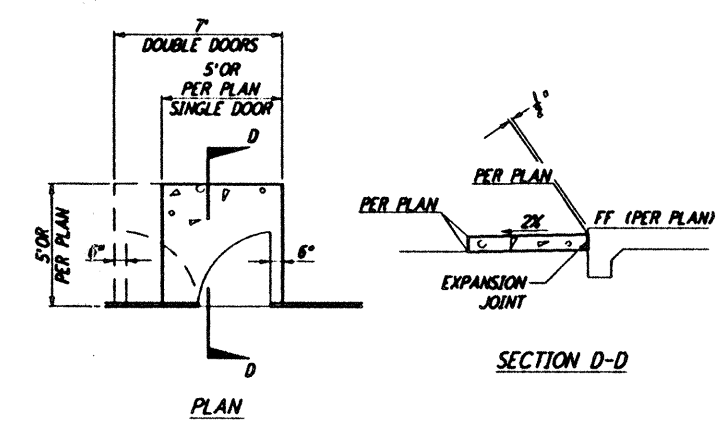
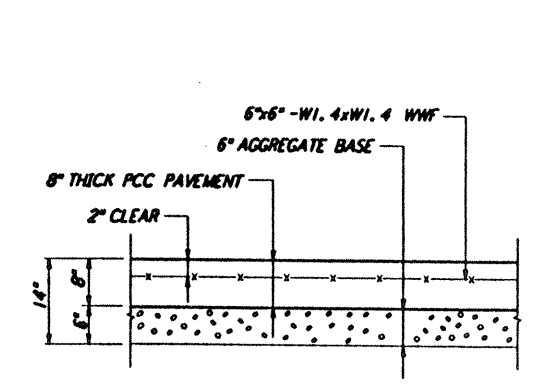


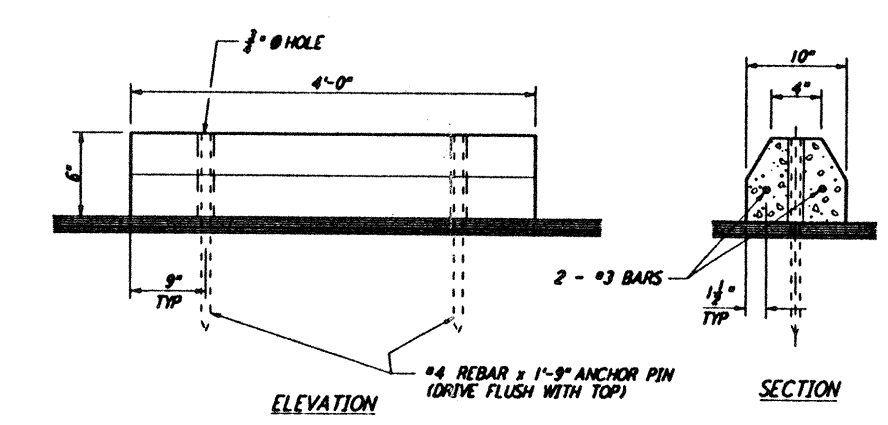
**CONCRETE WALKWAY** (1) REF: LA-C-051, LA-C-005, LA-C-006, LA-C-007, LA-C-008  
 NOT TO SCALE



**CONCRETE STOOP** (2) REF: LA-C-051, LA-C-005, LA-C-006, LA-C-025, LA-C-045  
 NOT TO SCALE

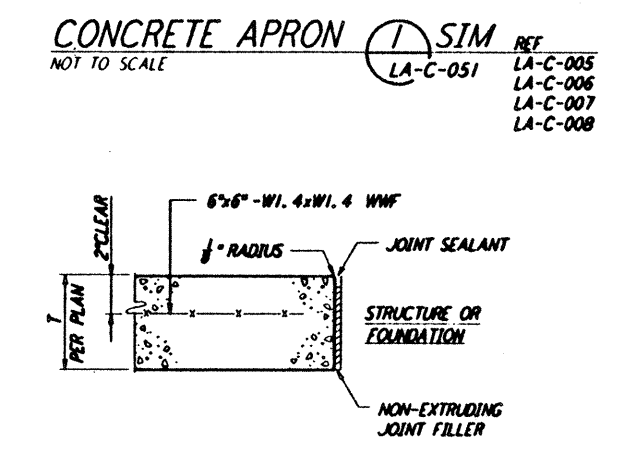


**CONCRETE PAVEMENT** (3) REF: LA-C-051, LA-C-005, LA-C-006, LA-C-021, LA-C-025, LA-C-041, LA-C-045  
 NOT TO SCALE

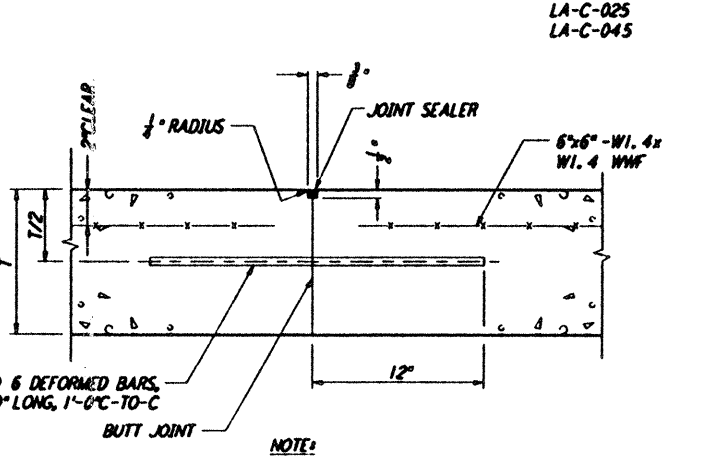


**CONCRETE PARKING BUMPER** (4) REF: LA-C-051, LA-C-005, LA-C-006, LA-C-021, LA-C-025, LA-C-041, LA-C-045  
 NOT TO SCALE

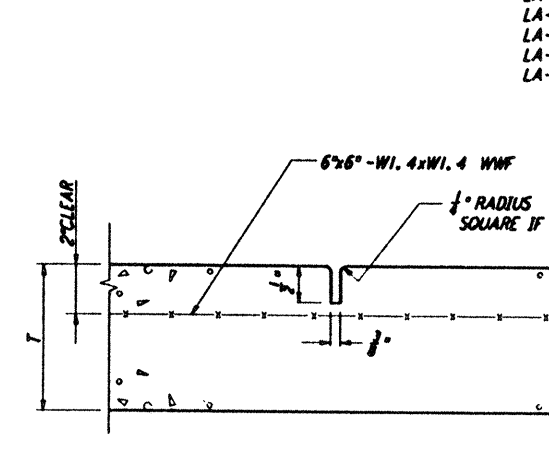
**NOTES:**  
 1. SEE SHEET LA-C-002 FOR GENERAL NOTES, LEGEND AND ABBREVIATIONS.



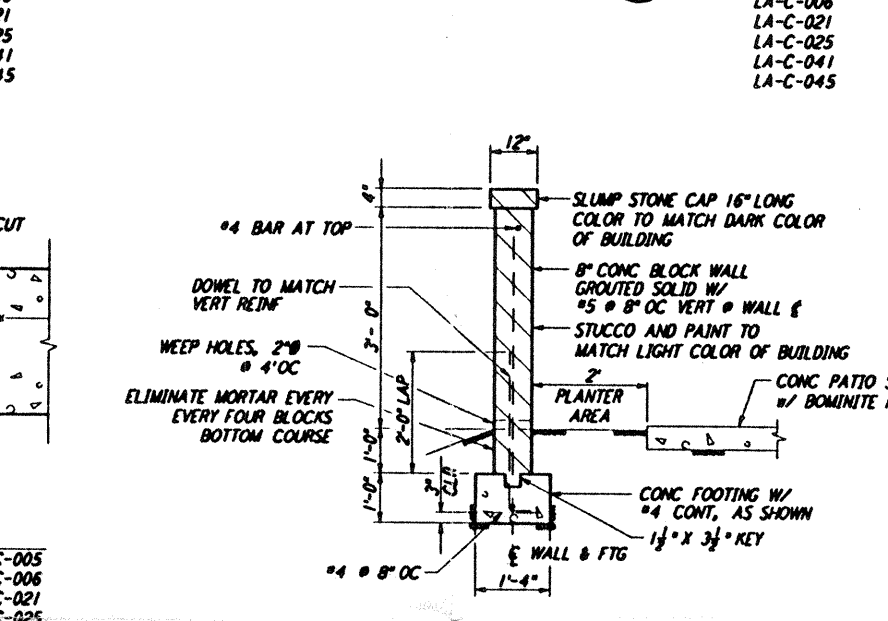
**CONCRETE APRON** (1) SIM REF: LA-C-051, LA-C-005, LA-C-006, LA-C-007, LA-C-008  
 NOT TO SCALE



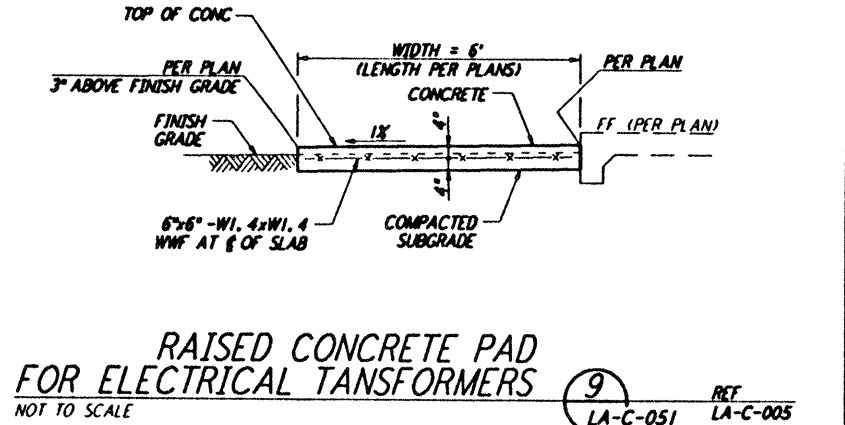
**CONSTRUCTION JOINT** (6) REF: LA-C-051, LA-C-005, LA-C-006, LA-C-021, LA-C-025, LA-C-041, LA-C-045  
 NOT TO SCALE  
 (SEPARATE POURS OR END OF DAY)



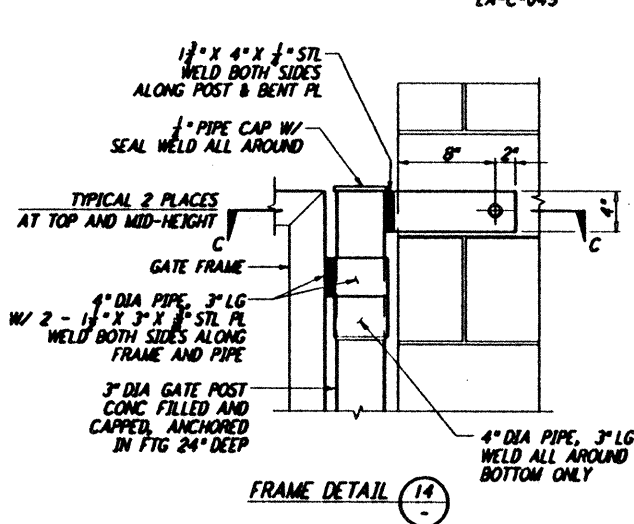
**CONTRACTION JOINT** (7) REF: LA-C-051, LA-C-005, LA-C-006, LA-C-021, LA-C-025, LA-C-041, LA-C-045  
 NOT TO SCALE  
 (SPACING 20' MAX)



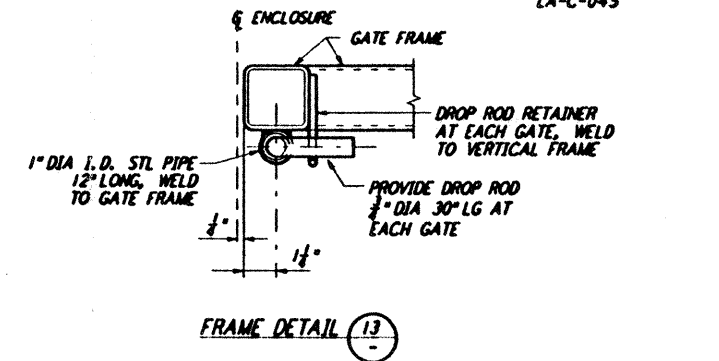
**PATIO WALL** (8) REF: LA-C-051, LA-C-006  
 NOT TO SCALE



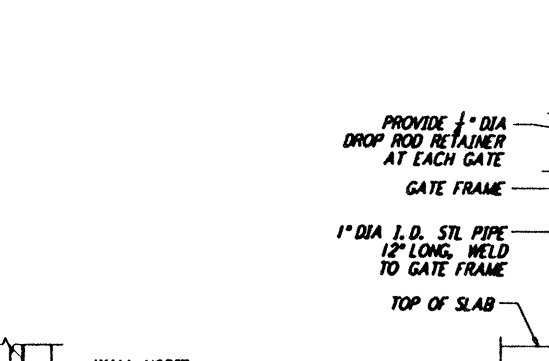
**RAISED CONCRETE PAD FOR ELECTRICAL TRANSFORMERS** (9) REF: LA-C-051, LA-C-005  
 NOT TO SCALE



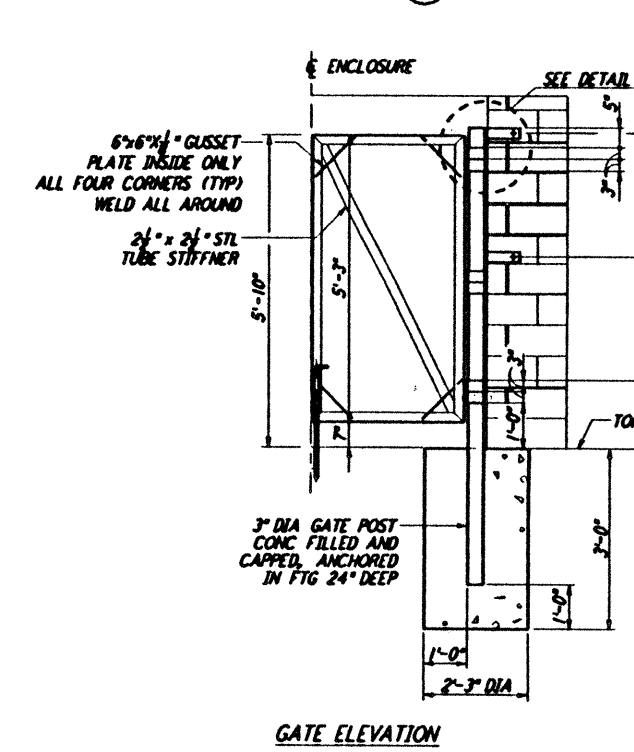
**EXPANSION JOINT (EJ)** (5) REF: LA-C-051, LA-C-005, LA-C-006, LA-C-021, LA-C-025, LA-C-041, LA-C-045  
 NOT TO SCALE



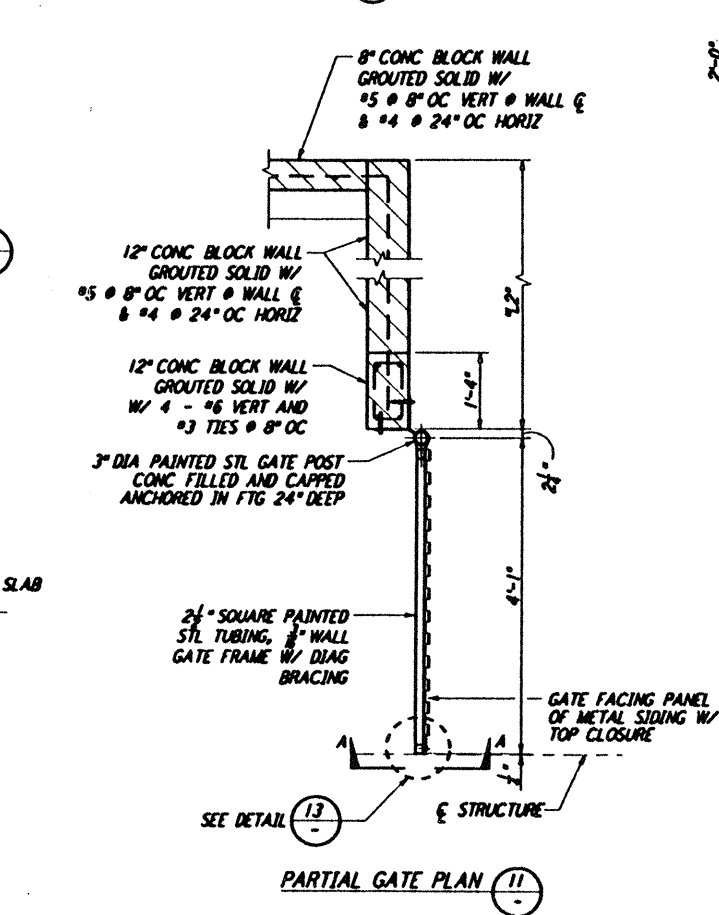
**FRAME DETAIL** (13)



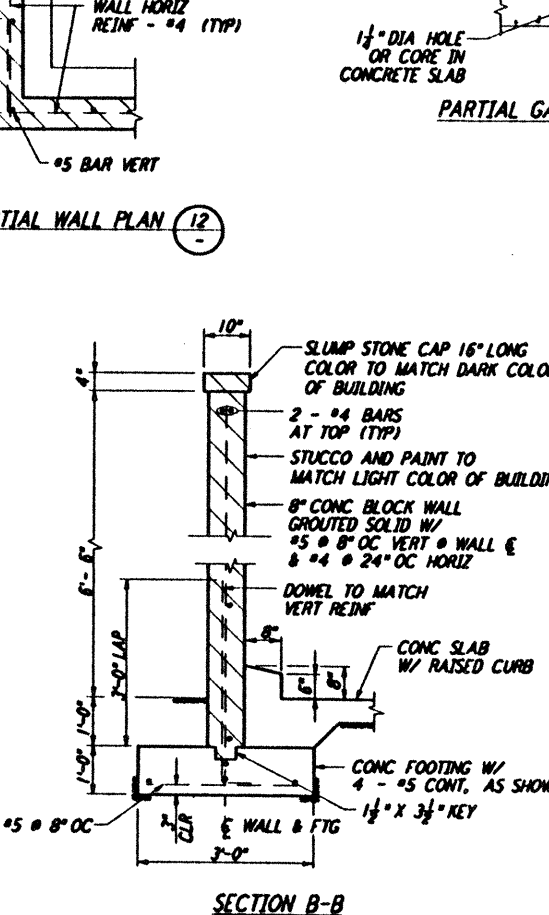
**PARTIAL GATE SECTION A-A**



**GATE ELEVATION**



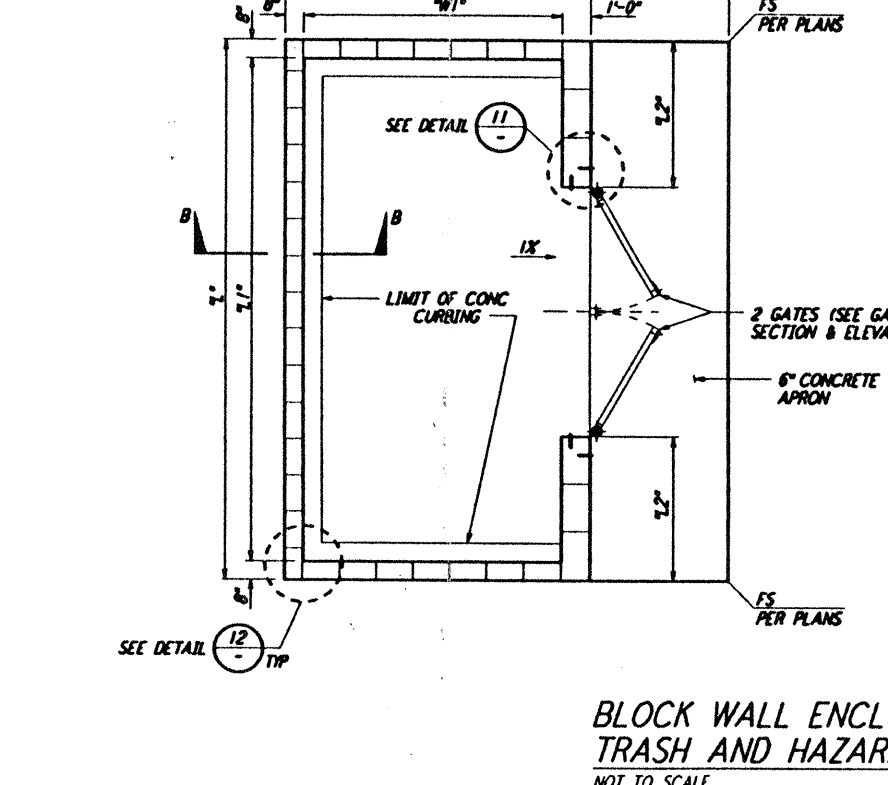
**PARTIAL GATE PLAN** (11)



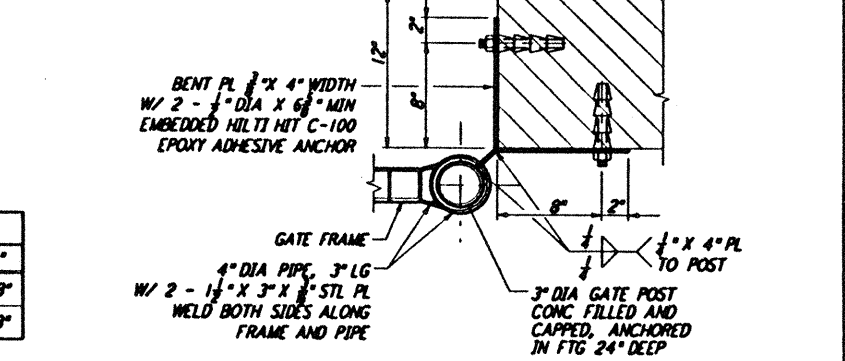
**SECTION B-B**

BLOCK WALL ENCLOSURE DIMENSIONS				
	2'	2 1/2'	2'	2'
HAZARDOUS WASTE STORAGE	30'	28'-4"	10'-0 1/2"	15'
TRASH ENCLOSURE	18'	16'-4"	4'-0 1/2"	10'

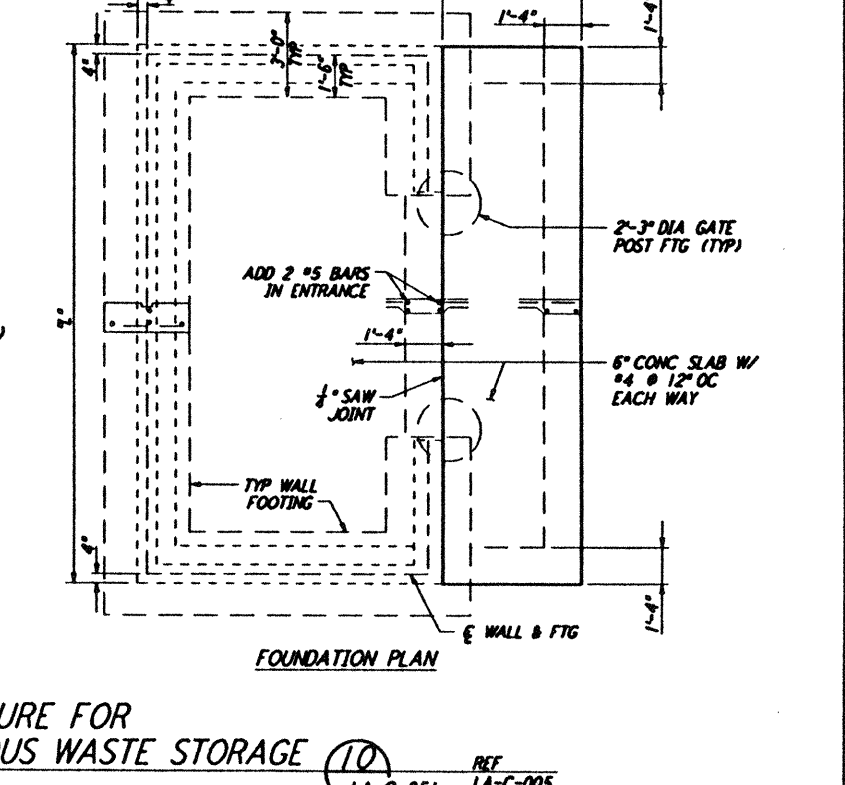
**PARTIAL WALL PLAN** (12)



**BLOCK WALL ENCLOSURE FOR TRASH AND HAZARDOUS WASTE STORAGE** (10) REF: LA-C-051, LA-C-005  
 NOT TO SCALE



**PARTIAL GATE SECTION C-C**



**FOUNDATION PLAN**

This document and the design it covers are the property of PARSONS. They are loaned only with the borrower's expressed written agreement that they will not be reproduced, copied, loaned, exhibited, or used in any other way, except by written consent from PARSONS to the borrower.

NO.	DATE	BY	CHKD	ENGR	PROJ	DESCRIPTION
B	7/24/96	WRB	ML	CV	TM	ISSUED FOR BID
A	6/14/96	WRB	ML	CV	TM	FINAL DESIGN REVIEW

DRAWN	WRB
CHECKED	
ENGINEER	
PROJ	

**PARSONS**  
 100 WEST WALNUT STREET  
 PASADENA, CALIFORNIA

**LIGO**  
 CALIFORNIA INSTITUTE OF TECHNOLOGY  
 MASSACHUSETTS INSTITUTE OF TECHNOLOGY

LASER INTERFEROMETER  
 GRAVITATIONAL-WAVE OBSERVATORY  
 SITE NO. 2 - LIVINGSTON, LOUISIANA  
 CIVIL SITEWORK DETAILS  
 SHEET 1  
**LA-C-051**

Mon Jul 22 08:45:25 1996 s3-v18b2 J:\PLOTS\QUEUES\18B2\CE051A.PRF