

CONCRETE WALKWAY (1) REF LA-C-051
 NOT TO SCALE
 LA-C-005
 LA-C-006
 LA-C-007
 LA-C-008

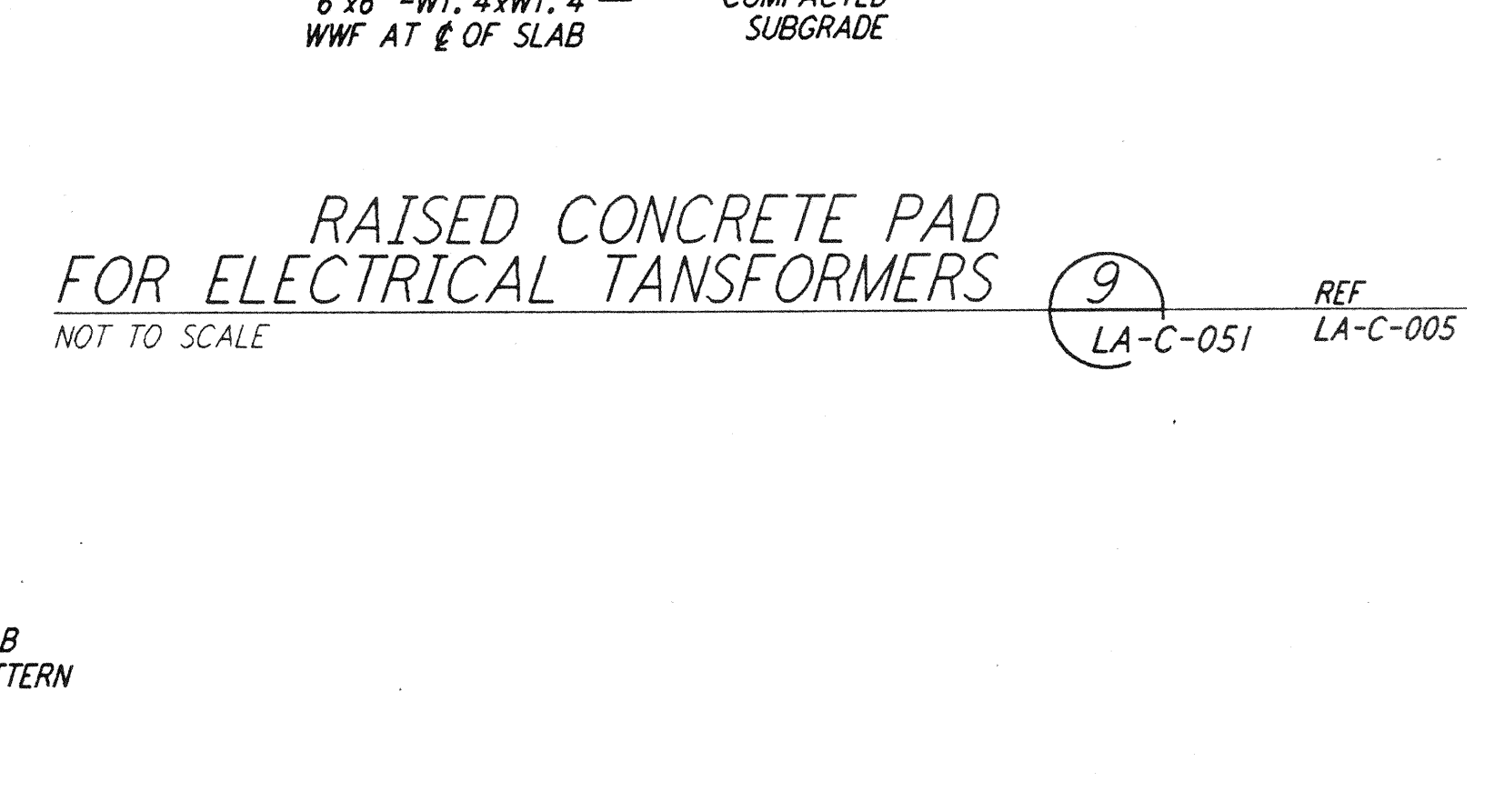
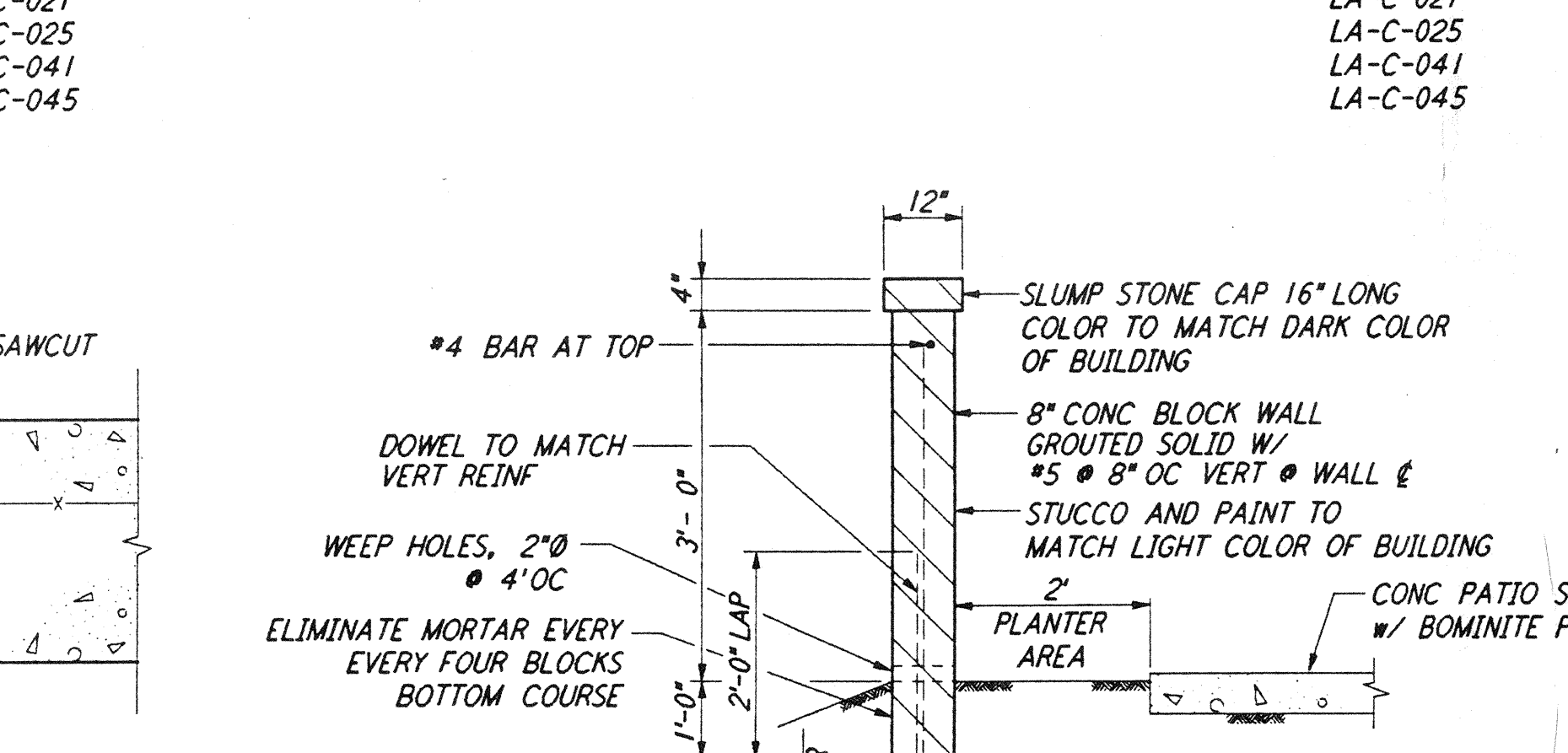
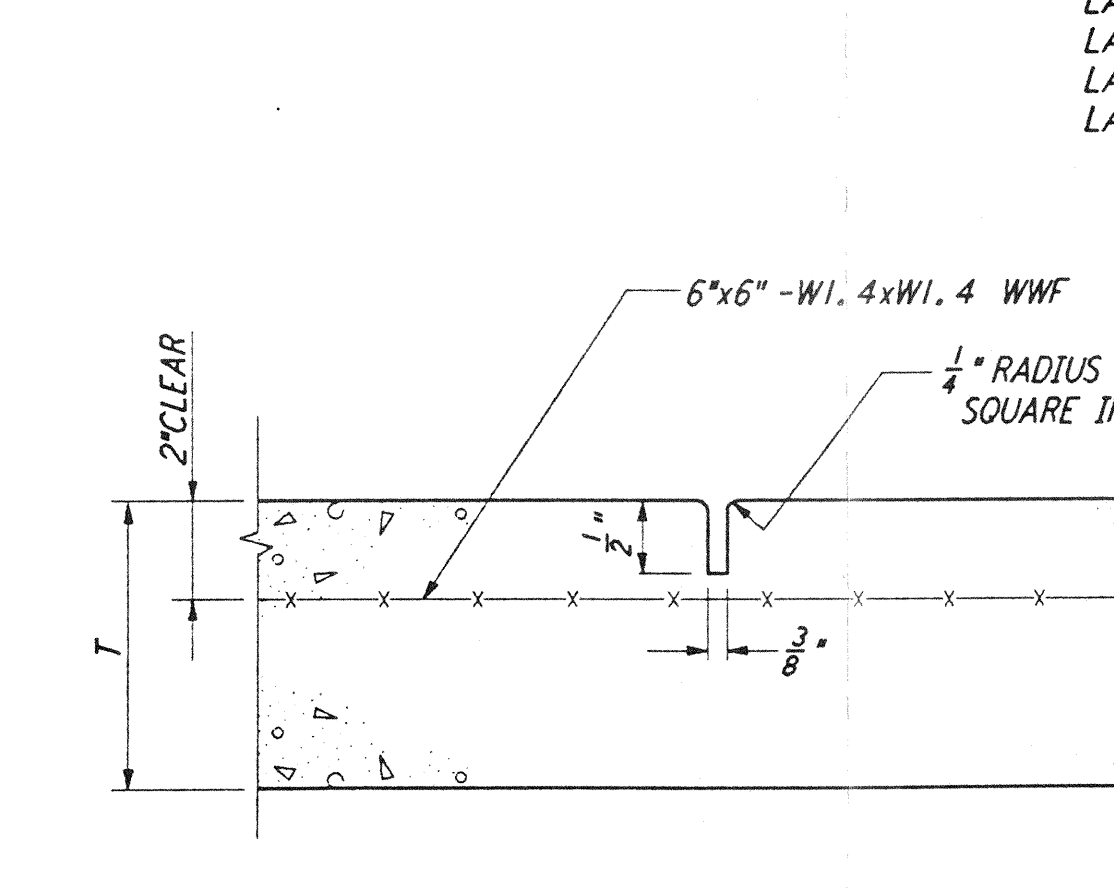
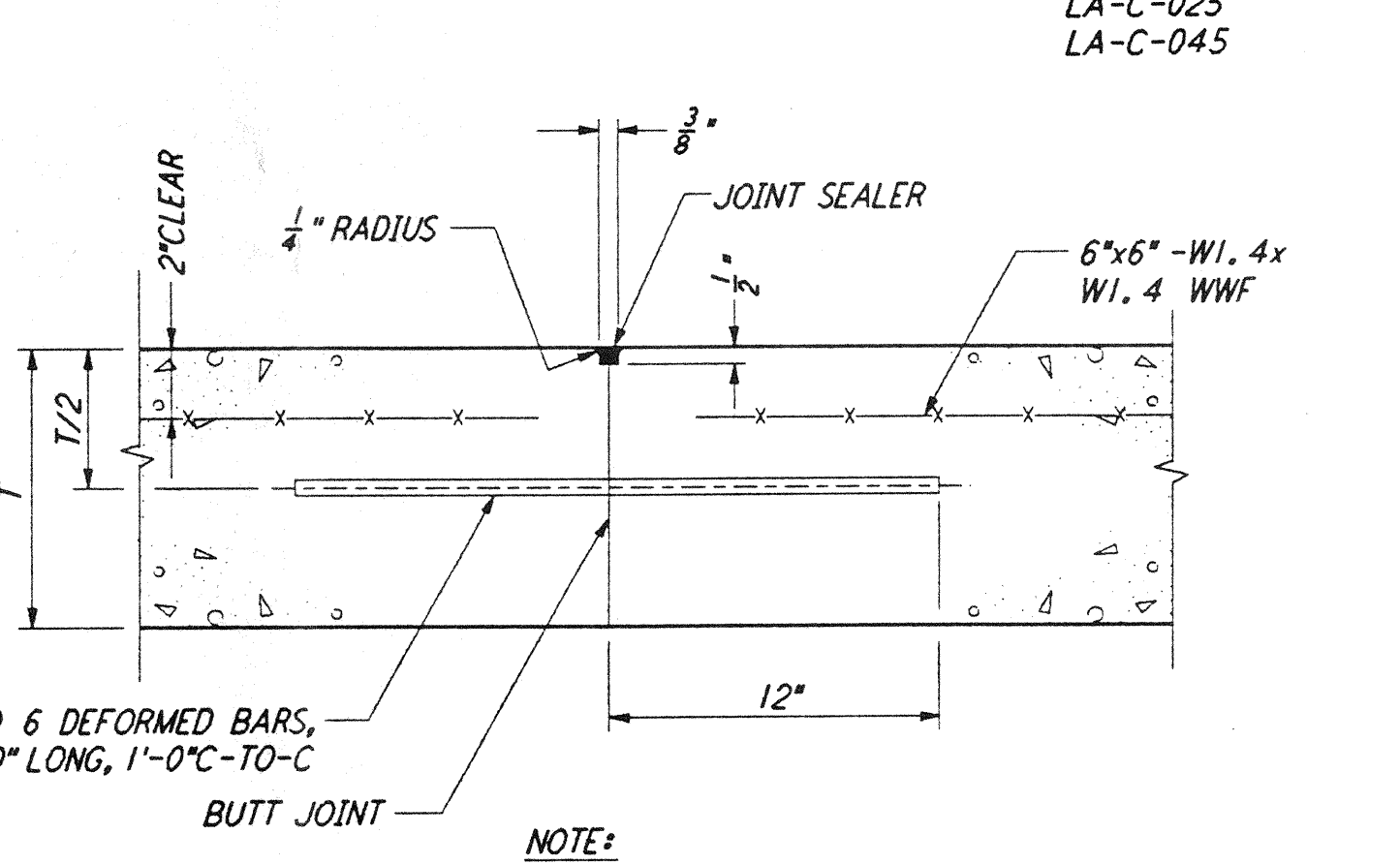
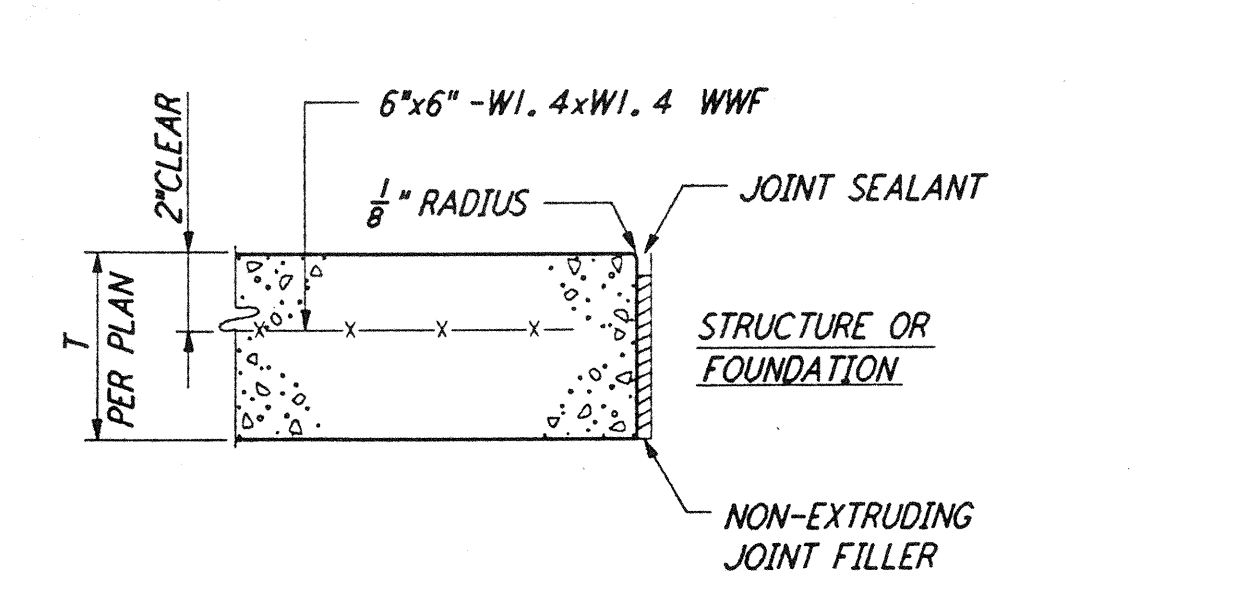
CONCRETE STOOP (2) REF LA-C-051
 NOT TO SCALE
 LA-C-005
 LA-C-006
 LA-C-025
 LA-C-045

CONCRETE PAVEMENT (3) REF LA-C-051
 NOT TO SCALE
 LA-C-005
 LA-C-006
 LA-C-021
 LA-C-025
 LA-C-041
 LA-C-045

CONCRETE PARKING BUMPER (4) REF LA-C-051
 NOT TO SCALE
 LA-C-005
 LA-C-006
 LA-C-021
 LA-C-025
 LA-C-041
 LA-C-045

RAISED CONCRETE PAD FOR ELECTRICAL TRANSFORMERS (9) REF LA-C-051
 NOT TO SCALE
 LA-C-005

CONCRETE APRON (1) SIM REF LA-C-051
 NOT TO SCALE
 LA-C-005
 LA-C-006
 LA-C-007
 LA-C-008



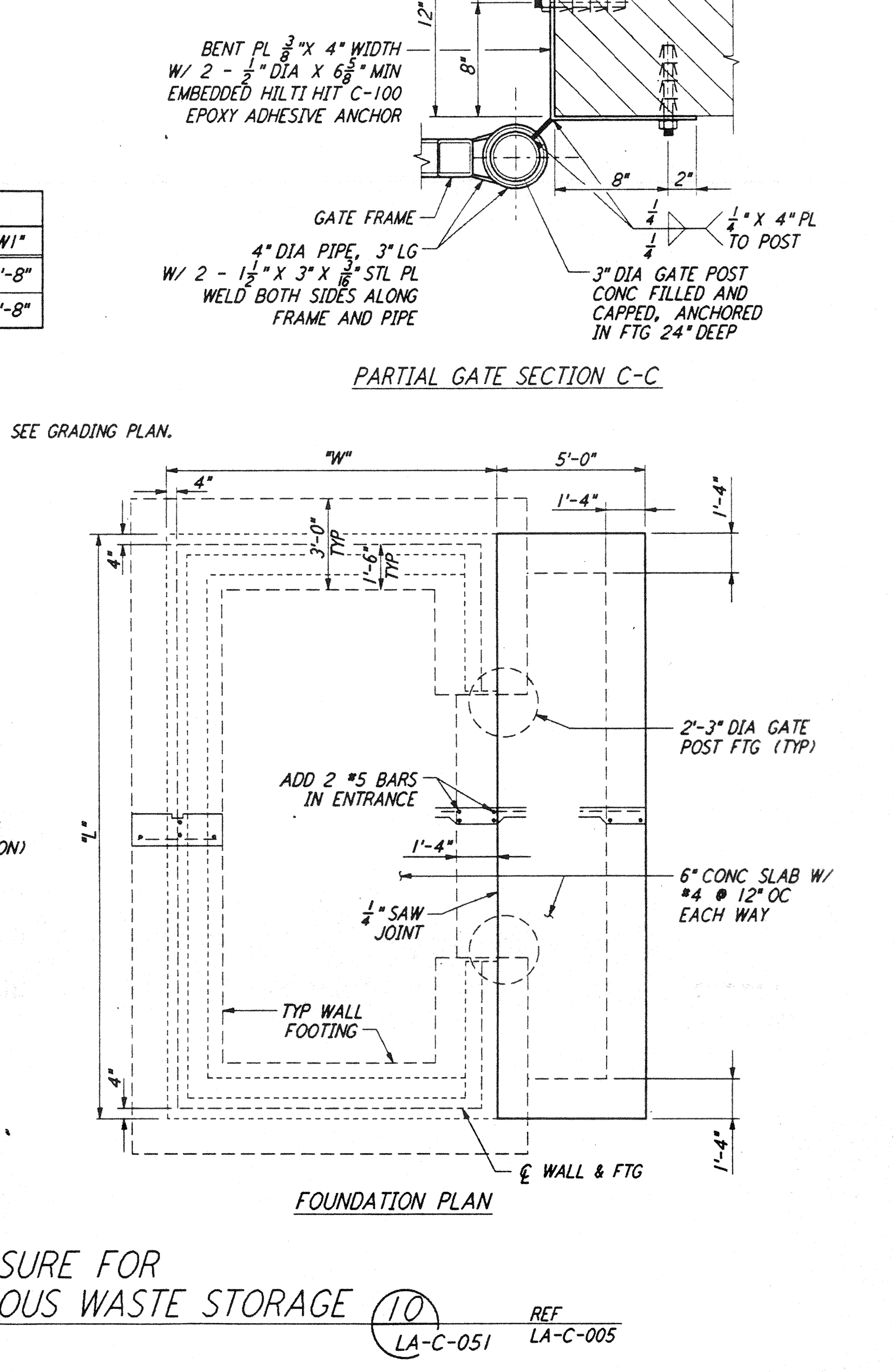
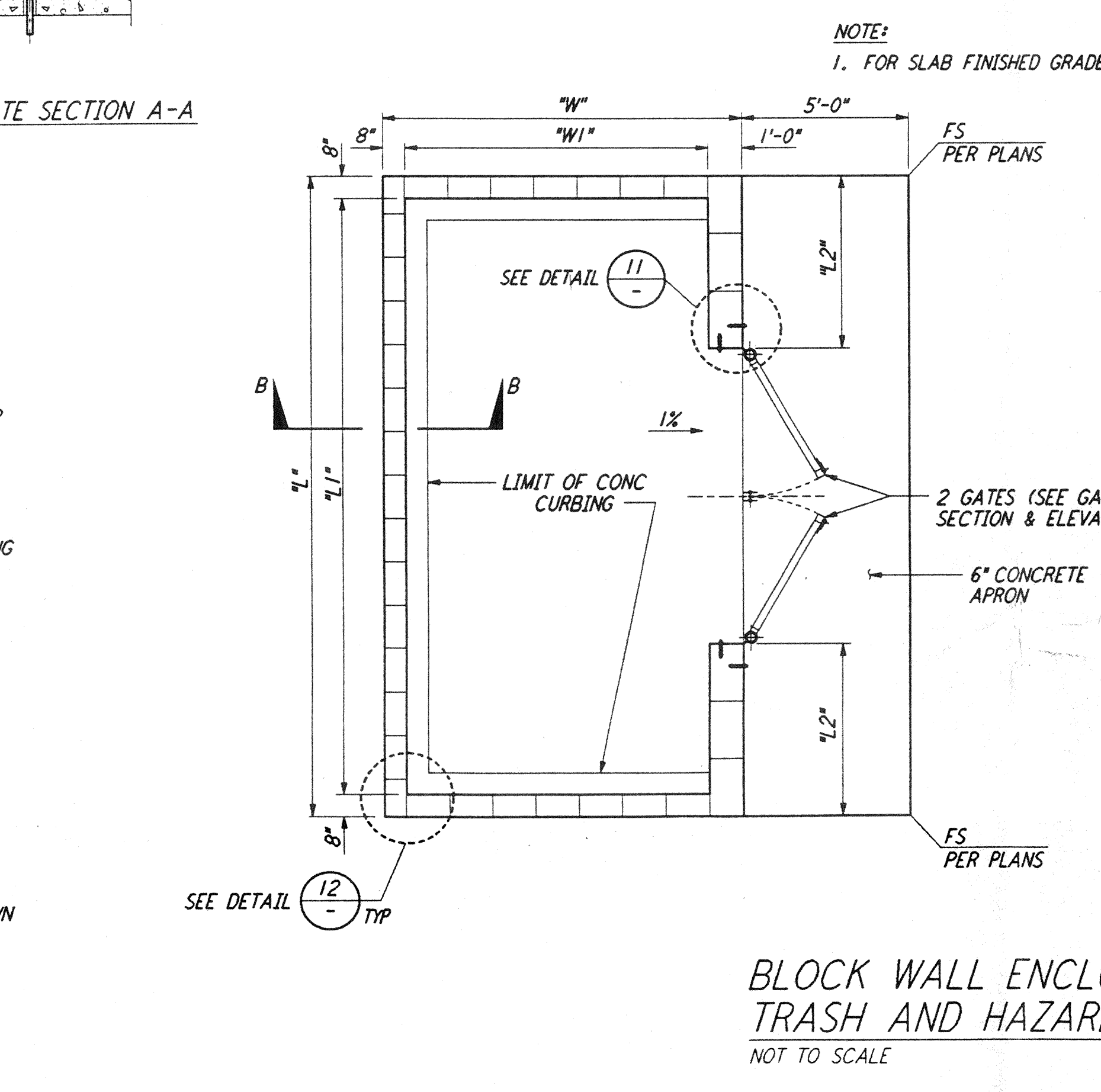
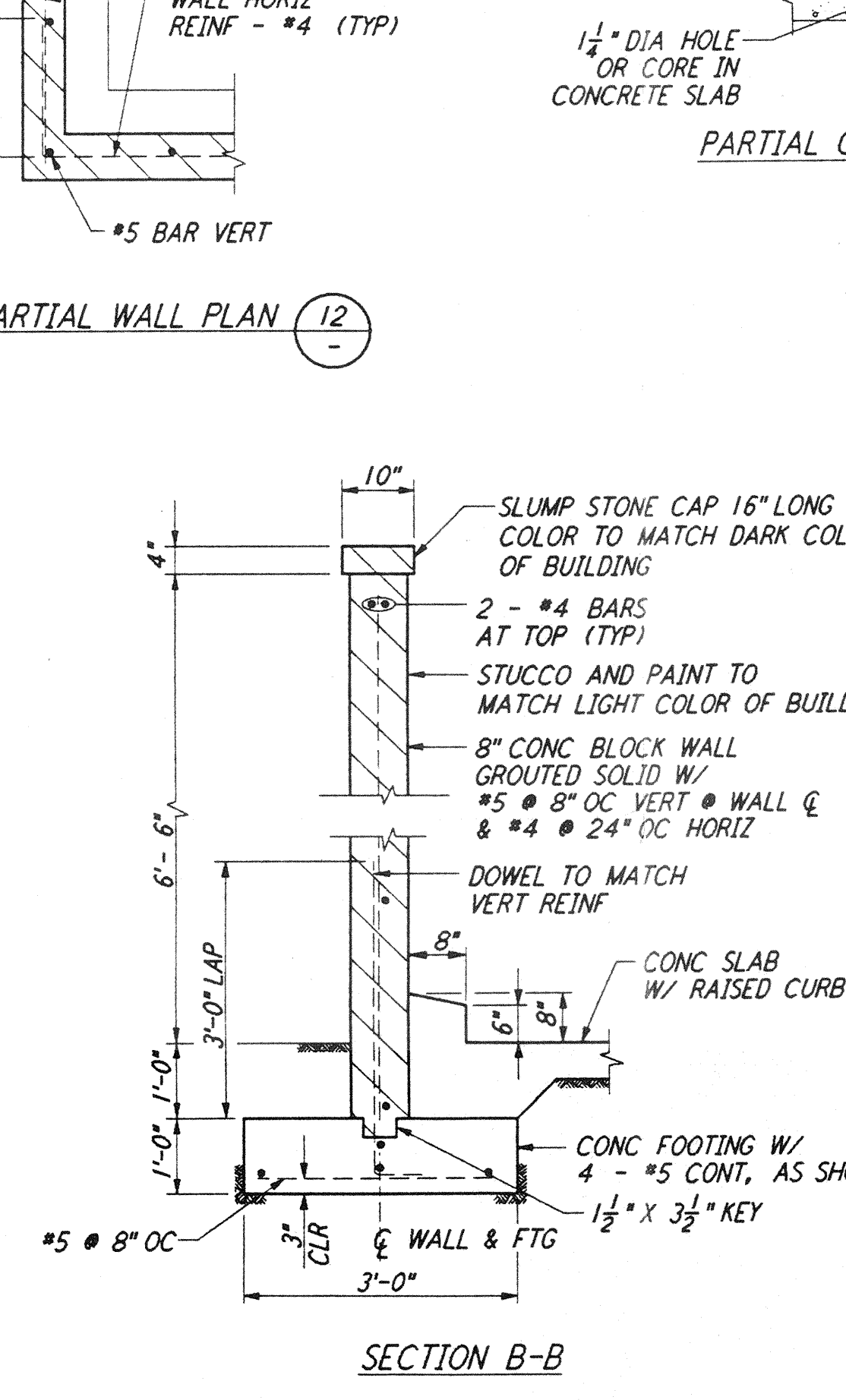
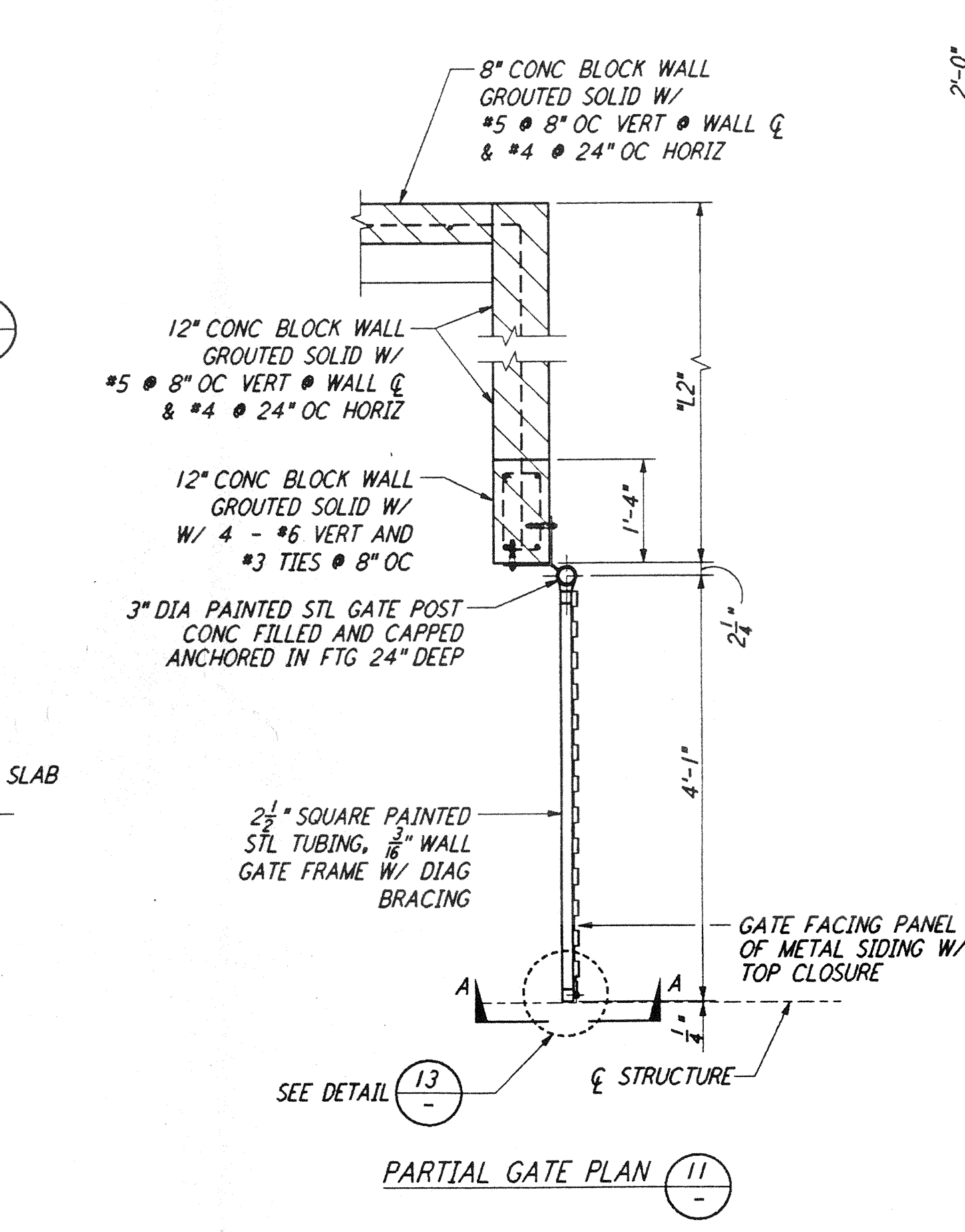
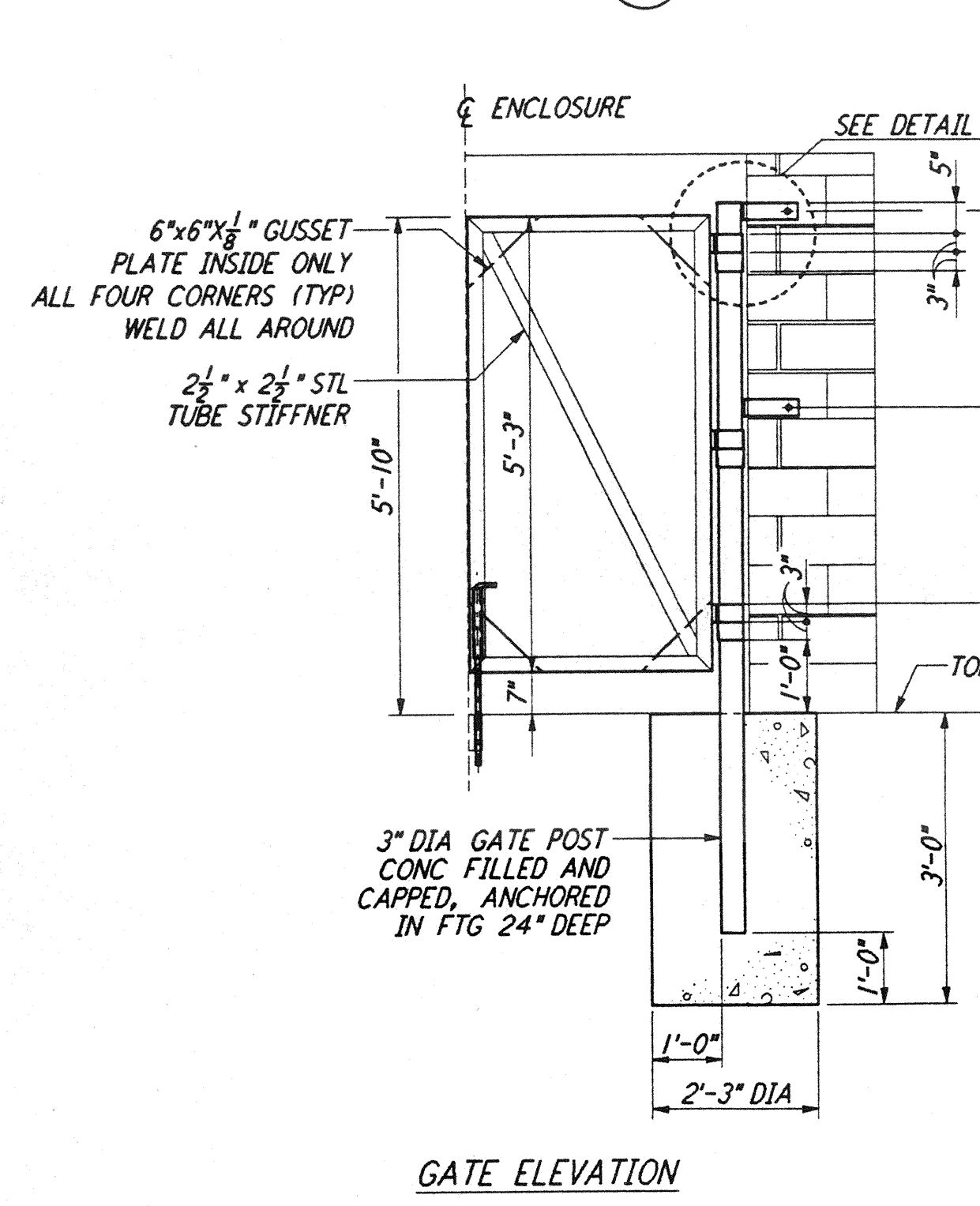
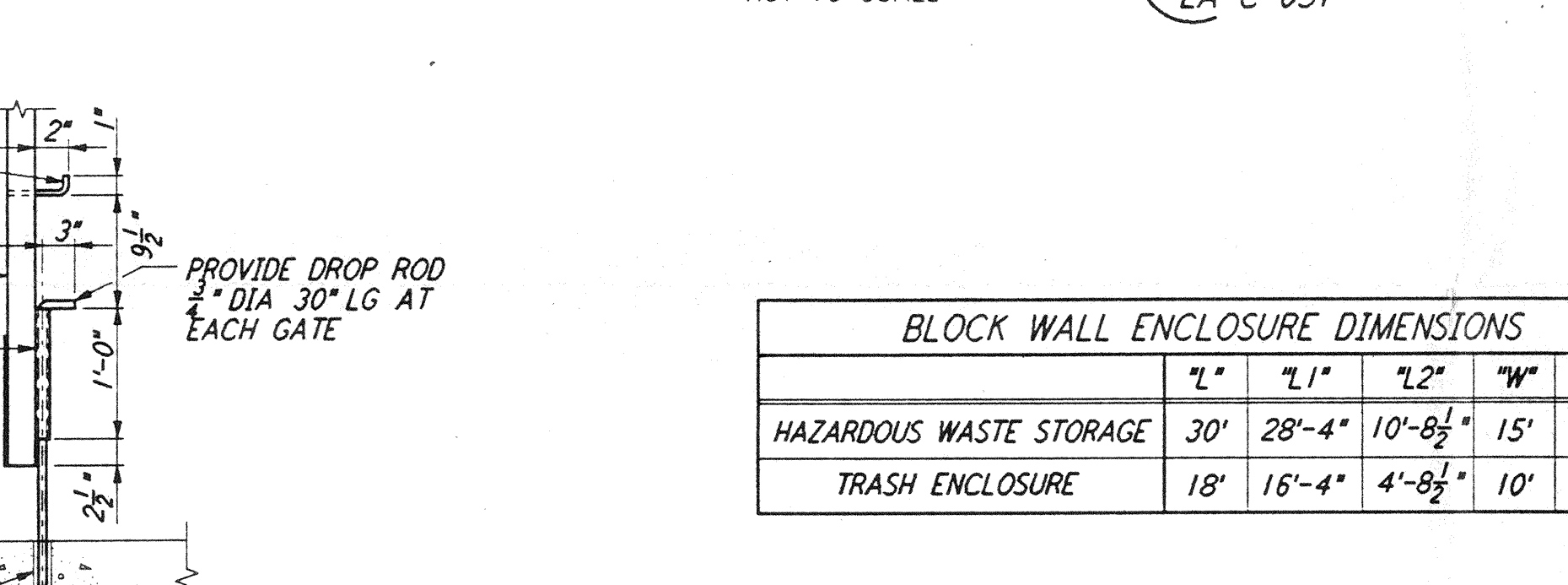
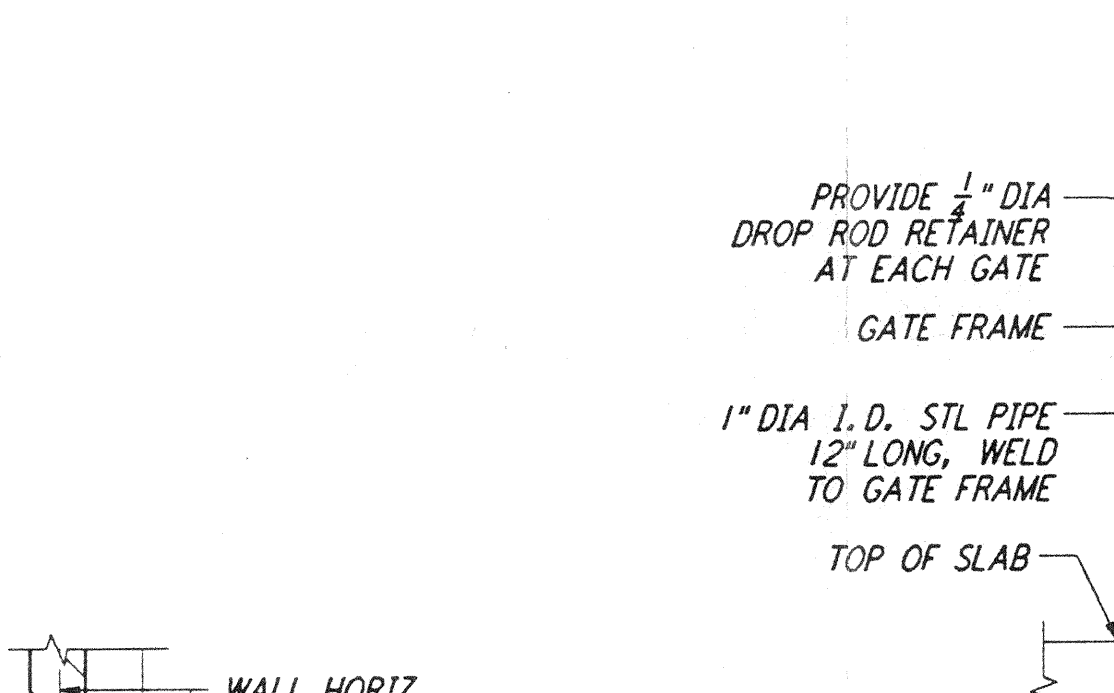
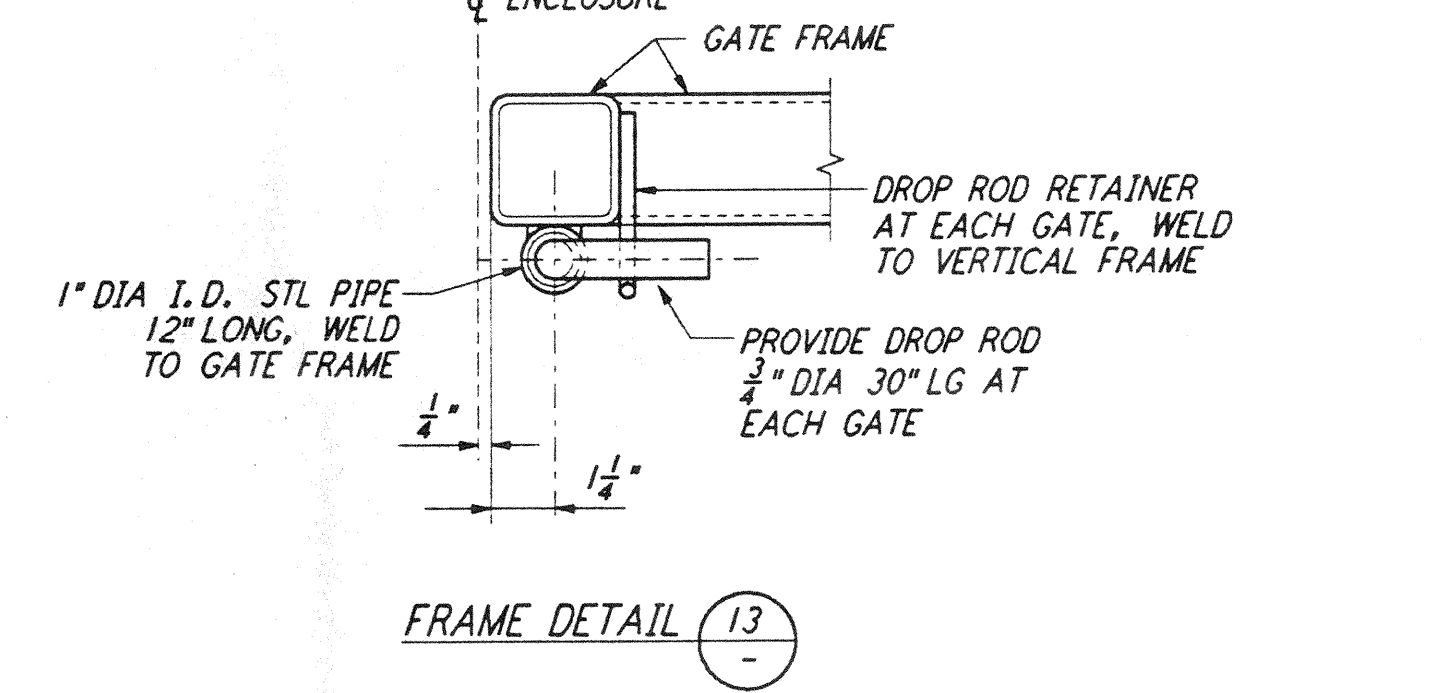
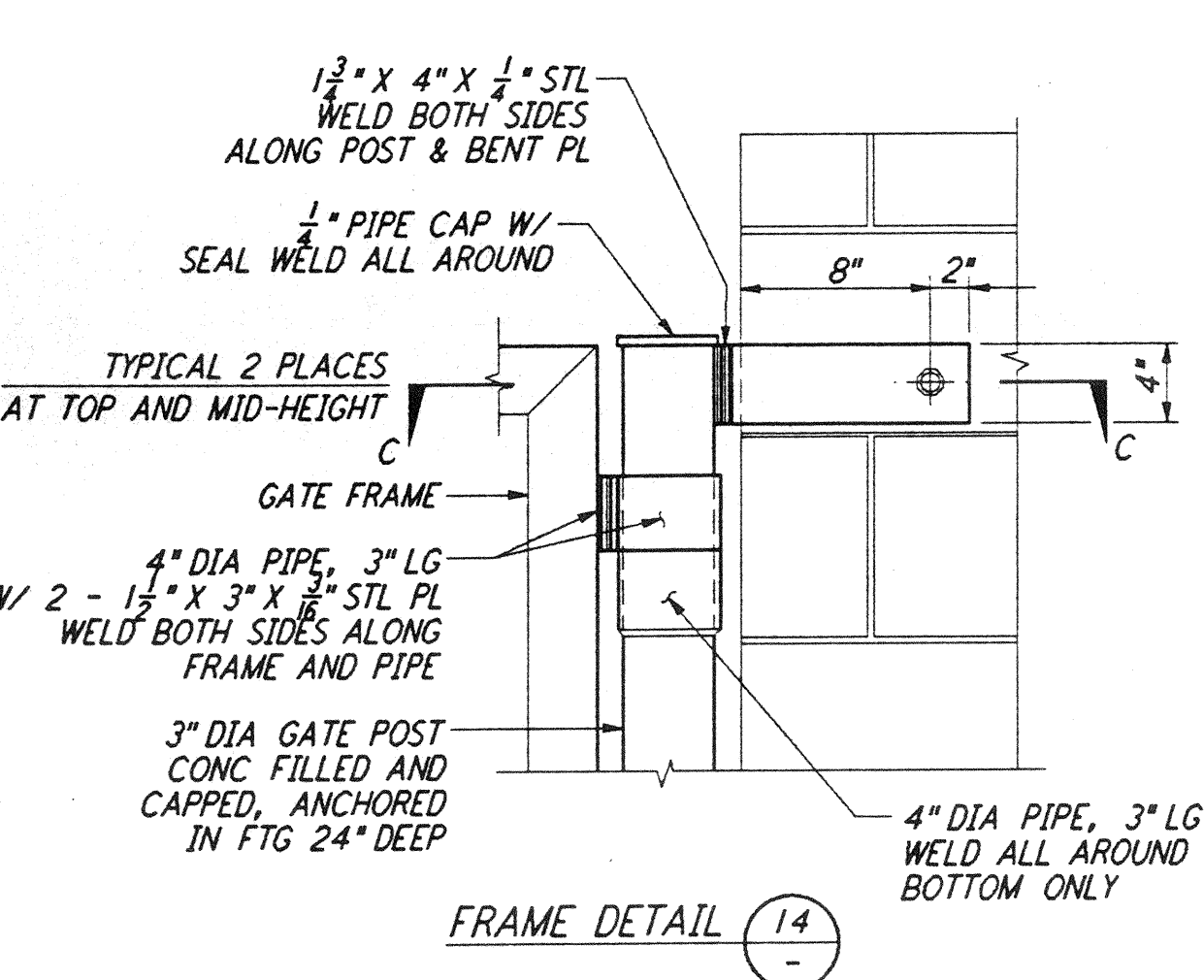
EXPANSION JOINT (5) (EJ) REF LA-C-051
 NOT TO SCALE
 LA-C-005
 LA-C-006
 LA-C-021
 LA-C-025
 LA-C-041
 LA-C-045

CONSTRUCTION JOINT (6) (CJ) REF LA-C-051
 NOT TO SCALE
 LA-C-005
 LA-C-006
 LA-C-021
 LA-C-025
 LA-C-041
 LA-C-045
 (SEPARATE POURS OR END OF DAY)

CONTRACTION JOINT (7) (CO) REF LA-C-051
 NOT TO SCALE
 LA-C-005
 LA-C-006
 LA-C-021
 LA-C-025
 LA-C-041
 LA-C-045
 (SPACING: 20' MAX)

PATIO WALL (8) REF LA-C-051
 NOT TO SCALE
 LA-C-005
 LA-C-006

RAISED CONCRETE PAD FOR ELECTRICAL TRANSFORMERS (9) REF LA-C-051
 NOT TO SCALE
 LA-C-005

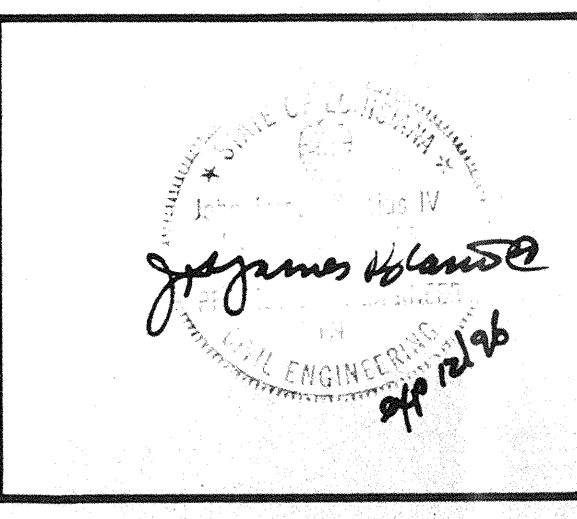


BLOCK WALL ENCLOSURE DIMENSIONS				
	7'	7'1"	7'2"	7'11"
HAZARDOUS WASTE STORAGE	30'	28'-4"	10'-8 1/2"	15'
TRASH ENCLOSURE	18'	16'-4"	4'-8 1/2"	10'

This document and the design it covers are the property of PARSONS. They are loaned only with the borrower's expressed written agreement that they will not be reproduced, copied, loaned, exhibited, or used in any other way, except by written consent from PARSONS to the borrower.

REFERENCES	REVISIONS	NO.	DATE	BY	CHKD	ENGR	PROJ	DESCRIPTION

ISSUED FOR CONSTRUCTION	
DRAWN	WRB 11-15-96
CHECKED	WJ 11-15-96
ENGINEER	Jb 11/16/96
PROJ	11/15/96



PARSONS
 100 WEST WALNUT STREET
 PASADENA, CALIFORNIA

LIGO
 CALIFORNIA INSTITUTE OF TECHNOLOGY
 MASSACHUSETTS INSTITUTE OF TECHNOLOGY

LASER INTERFEROMETER
 GRAVITATIONAL-WAVE OBSERVATORY
 SITE NO. 2 - LIVINGSTON, LOUISIANA

CIVIL SITEWORK DETAILS SHEET I

SCALE: AS NOTED
 CONTRACT NUMBER: PPI 50969
 PROJECT NUMBER: 8094

LA-C-051