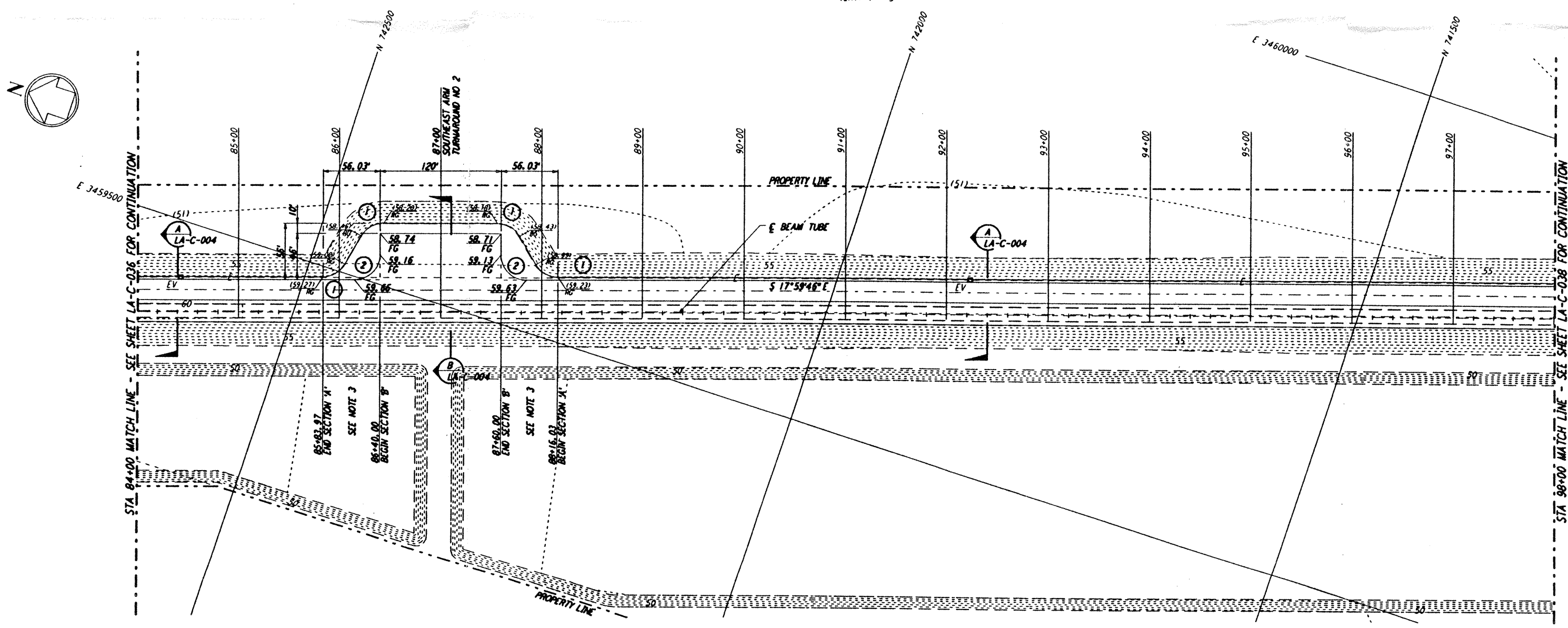


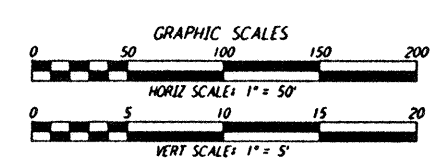
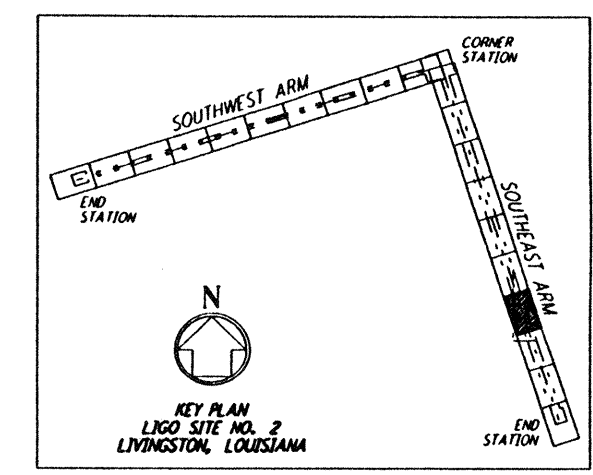
- NOTES:**
- SEE SHEET LA-C-002 FOR GENERAL NOTES, LEGEND AND ABBREVIATIONS.
  - SEE SHEET LA-C-004 FOR TYPICAL SECTIONS AND DETAILS.
  - TRANSITIONS BETWEEN SECTIONS, AS SHOWN ON PLANS, FROM EDGE OF BITUMINOUS SURFACE SLOPE TO EXISTING GRADE.

**PROFILE**  
 SCALES: HORIZ: 1" = 50'  
 VERT: 1" = 5'



**PLAN**  
 SCALE: 1" = 50'

| CURVE DATA |           |        |         |        |
|------------|-----------|--------|---------|--------|
| Δ          | RADIUS    | LENGTH | TANGENT |        |
| 1          | 60°00'00" | 25'    | 26.18'  | 14.43' |
| 2          | 90°00'00" | 25'    | 39.27'  | 25.00' |



This document and the design it covers are the property of PARSONS. They are loaned only with the borrower's expressed written agreement that they will not be reproduced, copied, loaned, exhibited, or used in any other way, except by written consent from PARSONS to the borrower.

| NO. | DATE    | BY  | CHKD | ENGR | PROJ | DESCRIPTION         |
|-----|---------|-----|------|------|------|---------------------|
| B   | 7/24/96 | WRB | MM   | MM   | MM   | ISSUED FOR BID      |
| A   | 6/14/96 | WRB | MC   | MM   | TDM  | FINAL DESIGN REVIEW |

|          |     |
|----------|-----|
| DRAWN    | WRB |
| CHECKED  |     |
| ENGINEER |     |
| PROJ     |     |

**PARSONS**  
 100 WEST WALNUT STREET  
 PASADENA, CALIFORNIA

**LIGO**  
 CALIFORNIA INSTITUTE OF TECHNOLOGY  
 MASSACHUSETTS INSTITUTE OF TECHNOLOGY

LASER INTERFEROMETER  
 GRAVITATIONAL-WAVE OBSERVATORY  
 SITE NO. 2 - LIVINGSTON, LOUISIANA

TITLE: CIVIL SOUTHEAST ARM PLAN AND PROFILE STA 84+00 TO STA 98+00

AS NOTED PP150969 8094

**LA-C-037**

Mon Jul 22 08:20:18 1996 s3-v1862 J:\PLOTS\QUEUES\18B2\CE037A.PRF