

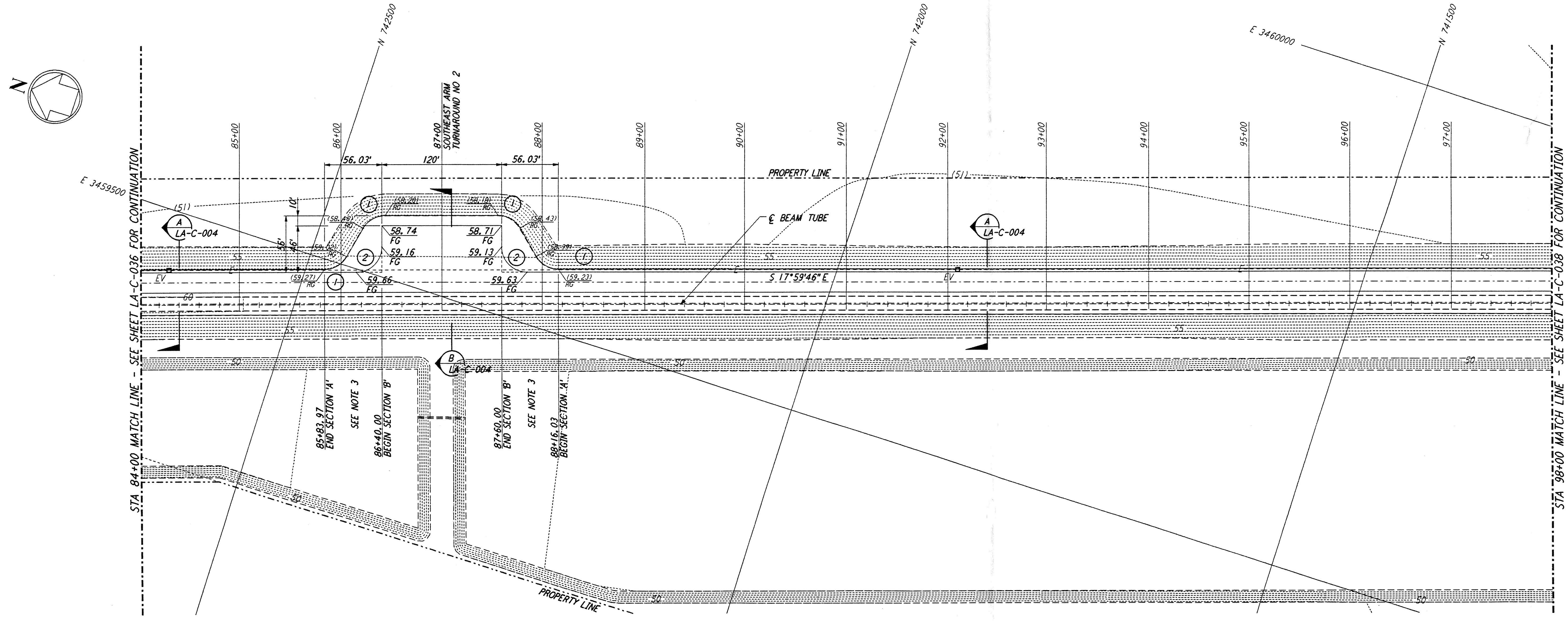
This document and the design it covers are the property of PARSONS. They are loaned only with the borrower's expressed written agreement that they will not be reproduced, copied, loaned, exhibited, or used in any other way, except by written consent from PARSONS to the borrower.

This document and the design it covers are the property of PARSONS. They are loaned only with the borrower's expressed written agreement that they will not be reproduced, copied, loaned, exhibited, or used in any other way, except by written consent from PARSONS to the borrower.

- NOTES:**
- SEE SHEET LA-C-002 FOR GENERAL NOTES, LEGEND AND ABBREVIATIONS.
 - SEE SHEET LA-C-004 FOR TYPICAL SECTIONS AND DETAILS.
 - TRANSITIONS BETWEEN SECTIONS, AS SHOWN ON PLANS, FROM EDGE OF BITUMINOUS SURFACE SLOPE TO EXISTING GRADE.

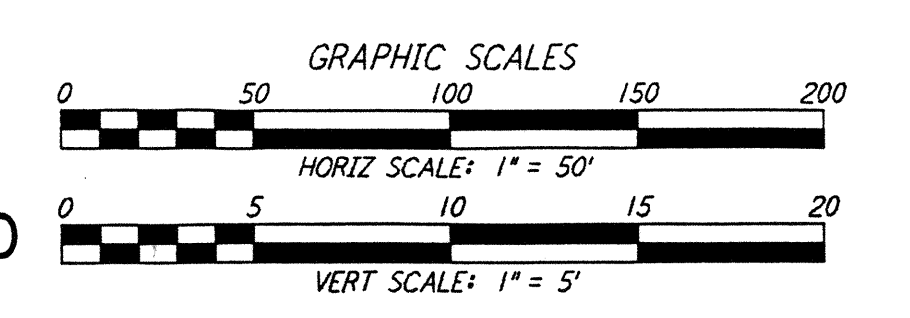
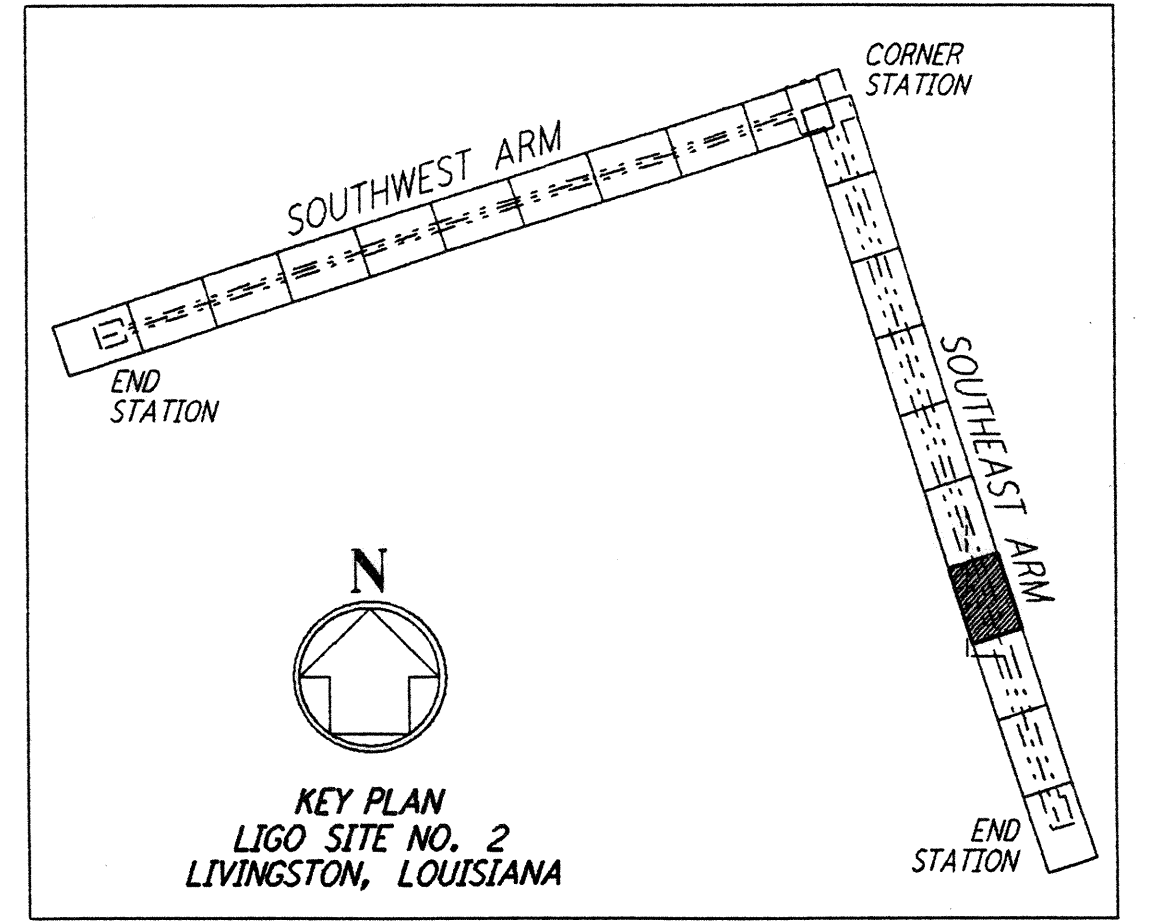


PROFILE
 SCALES: HORIZ: 1" = 50'
 VERT: 1" = 5'



PLAN
 SCALE: 1" = 50'

CURVE DATA				
Δ	RADIUS	LENGTH	TANGENT	
1	60°00'00"	25'	26.18'	14.43'
2	90°00'00"	25'	39.27'	25.00'



LIGO-D960851-01-0

NO.	DATE	BY	CHKD	ENGR	PROJ	REVISIONS
1	2-3-97	WRB	CL	JB	TDM	REVISED PROFILE ELEVATIONS

ISSUED FOR CONSTRUCTION		
DRAWN	WRB	11-15-96
CHECKED	ML	11-15-96
ENGINEER	JB	11-15-96
PROJ	TDM	11-15-96

John James Blain
 CIVIL ENGINEER
 02/11/97

PARSONS
 100 WEST WALNUT STREET
 PASADENA, CALIFORNIA

LIGO
 CALIFORNIA INSTITUTE OF TECHNOLOGY
 MASSACHUSETTS INSTITUTE OF TECHNOLOGY

LASER INTERFEROMETER
 GRAVITATIONAL-WAVE OBSERVATORY
 SITE NO. 2 - LIVINGSTON, LOUISIANA

TITLE	SCALE	CONTRACT NUMBER	PROJECT NUMBER
CIVIL SOUTHWEST ARM PLAN AND PROFILE STA 84+00 TO STA 98+00	AS NOTED	PPI50969	8094
SHEET NUMBER		REVISIONS	
LA-C-037			