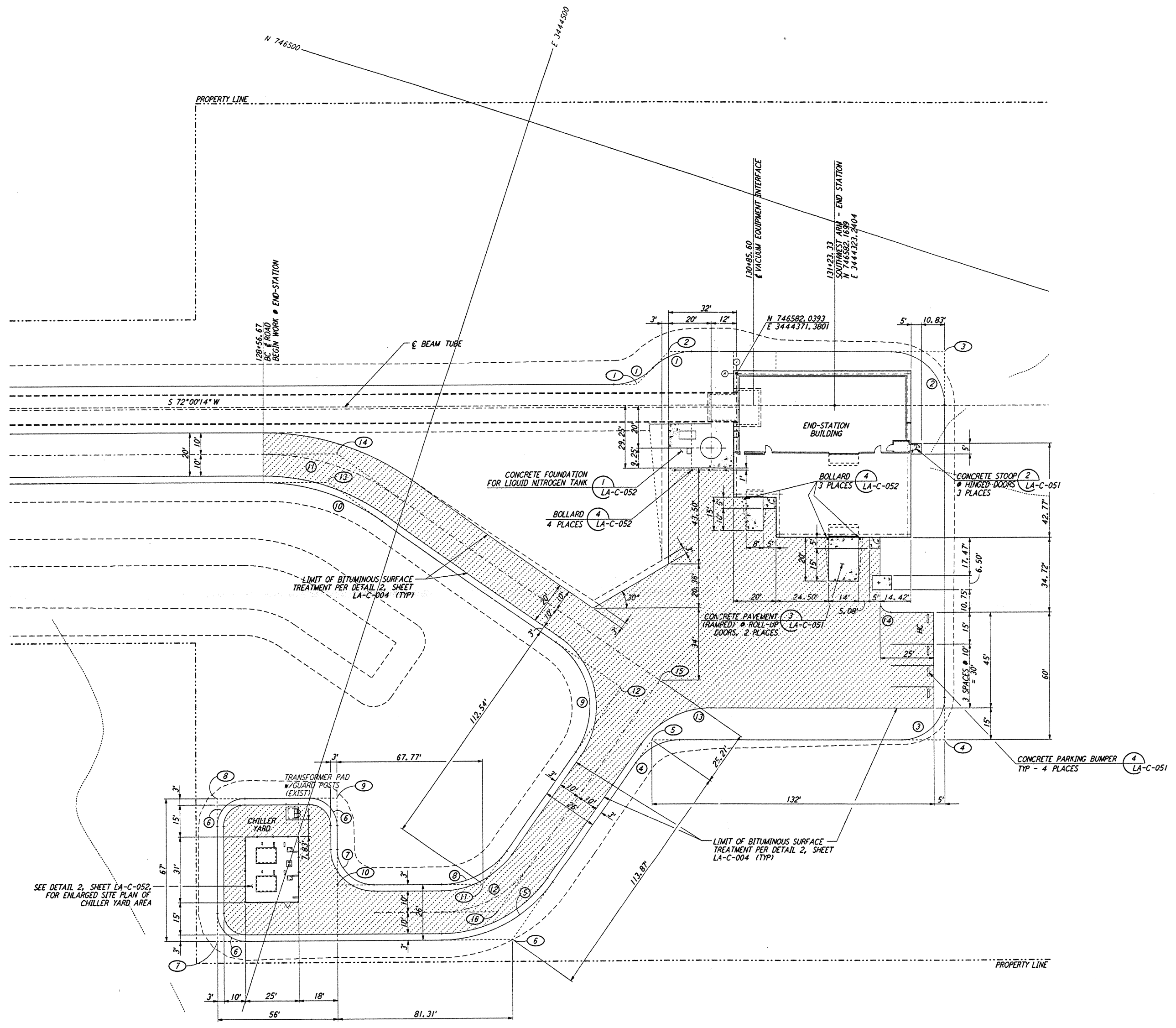
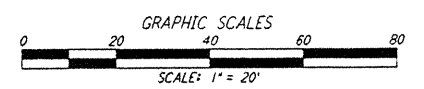
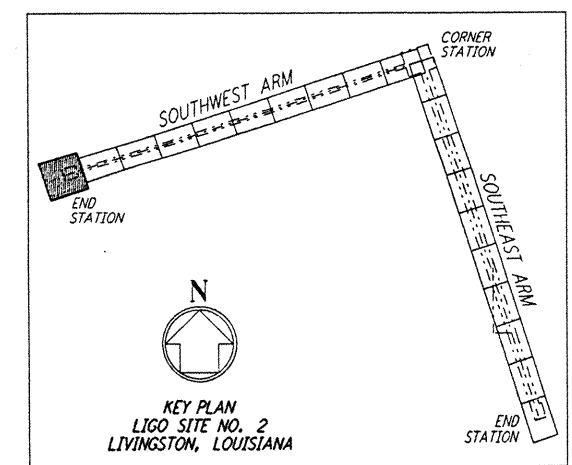


NOTES:  
 1. SEE SHEET LA-C-002 FOR GENERAL NOTES, LEGEND AND ABBREVIATIONS.

CURVE DATA					
Δ	RADIUS	LENGTH	TANGENT	REMARK	
1	46°27'52"	25'	20.24'	10.71'	EDGE OF PAD (EXIST)
2	90°00'00"	25'	39.27'	25.00'	EDGE OF PAD (EXIST)
3	90°00'00"	20'	31.42'	20.00'	EDGE OF PAD (EXIST)
4	55°00'00"	25'	24.00'	13.01'	EDGE OF PAD (EXIST)
5	55°00'00"	63'	60.48'	32.80'	EDGE OF PAD (EXIST)
6	90°00'00"	13'	20.42'	13.00'	EDGE OF PAD (EXIST)
7	90°00'00"	17'	26.70'	17.00'	EDGE OF PAD (EXIST)
8	55°00'00"	37'	35.52'	19.26'	EDGE OF PAD (EXIST)
9	90°00'00"	37'	58.12'	37.00'	EDGE OF PAD (EXIST)
10	35°00'00"	97'	59.25'	30.58'	EDGE OF PAD (EXIST)
11	35°00'00"	110'	67.19'	34.68'	EDGE OF ROAD
12	55°00'00"	50'	48.00'	26.03'	EDGE OF ROAD
13	55°00'00"	40'	38.40'	20.82'	EDGE OF ROAD
14	90°00'00"	5'	7.85'	5.00'	EDGE OF ROAD

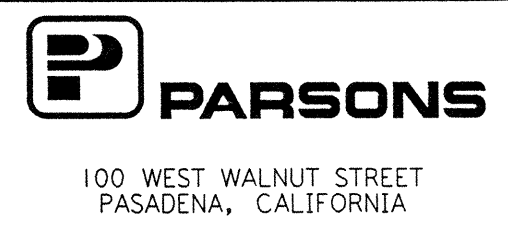
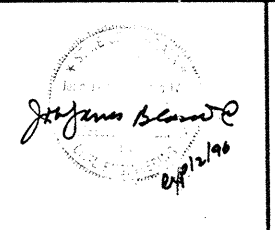
COORDINATES			
Δ	NORTH	EAST	REMARK
1	746601.2094	3444414.2190	PI EDGE OF PAD (EXIST)
2	746581.8859	3444404.9583	PI EDGE OF PAD (EXIST)
3	746542.0340	3444282.2991	PI EDGE OF PAD (EXIST)
4	746713.9414	3444226.4561	PI EDGE OF PAD (EXIST)
5	746756.2721	3444356.7673	PI EDGE OF PAD (EXIST)
6	746865.1631	3444390.0666	PI EDGE OF PAD (EXIST)
7	746907.5859	3444520.6572	PI EDGE OF PAD (EXIST)
8	746843.8638	3444541.3572	PI EDGE OF PAD (EXIST)
9	746826.5621	3444488.0967	PI EDGE OF PAD (EXIST)
10	746865.5560	3444475.4302	PI EDGE OF PAD (EXIST)
11	746844.6170	3444410.9719	PI EDGE OF PAD (EXIST)
12	746736.9948	3444378.0607	PI EDGE OF PAD (EXIST)
13	746688.3994	3444536.9707	PI EDGE OF PAD (EXIST)
14	746674.7690	3444537.0886	PI EDGE OF ROAD
15	746728.3647	3444361.8273	PI EDGE OF ROAD INTERSECTION
16	746854.8902	3444400.5194	PI EDGE OF ROAD



This document and the design it covers are the property of PARSONS. They are loaned only with the borrower's expressed written agreement that they will not be reproduced, copied, loaned, exhibited, or used in any other way, except by written consent from PARSONS to the borrower.

DRAWING NO.	DESCRIPTION	NO.	DATE	BY	CHKD	ENGR	PROJ	DESCRIPTION

ISSUED FOR CONSTRUCTION  
 DRAWN WRB 11-15-96  
 CHECKED WLC 11-15-96  
 ENGINEER JB 11/15/96  
 PROJ [Signature] 11/15/96



LASER INTERFEROMETER GRAVITATIONAL-WAVE OBSERVATORY SITE NO. 2 - LIVINGSTON, LOUISIANA

TITLE	SHEET NUMBER	CONTRACT NUMBER	PROJECT NUMBER
CIVIL SOUTHWEST ARM END-STATION PLOT PLAN	1" = 20'	PP150969	8094
SHEET NUMBER			REVISIONS
LA-C-025			