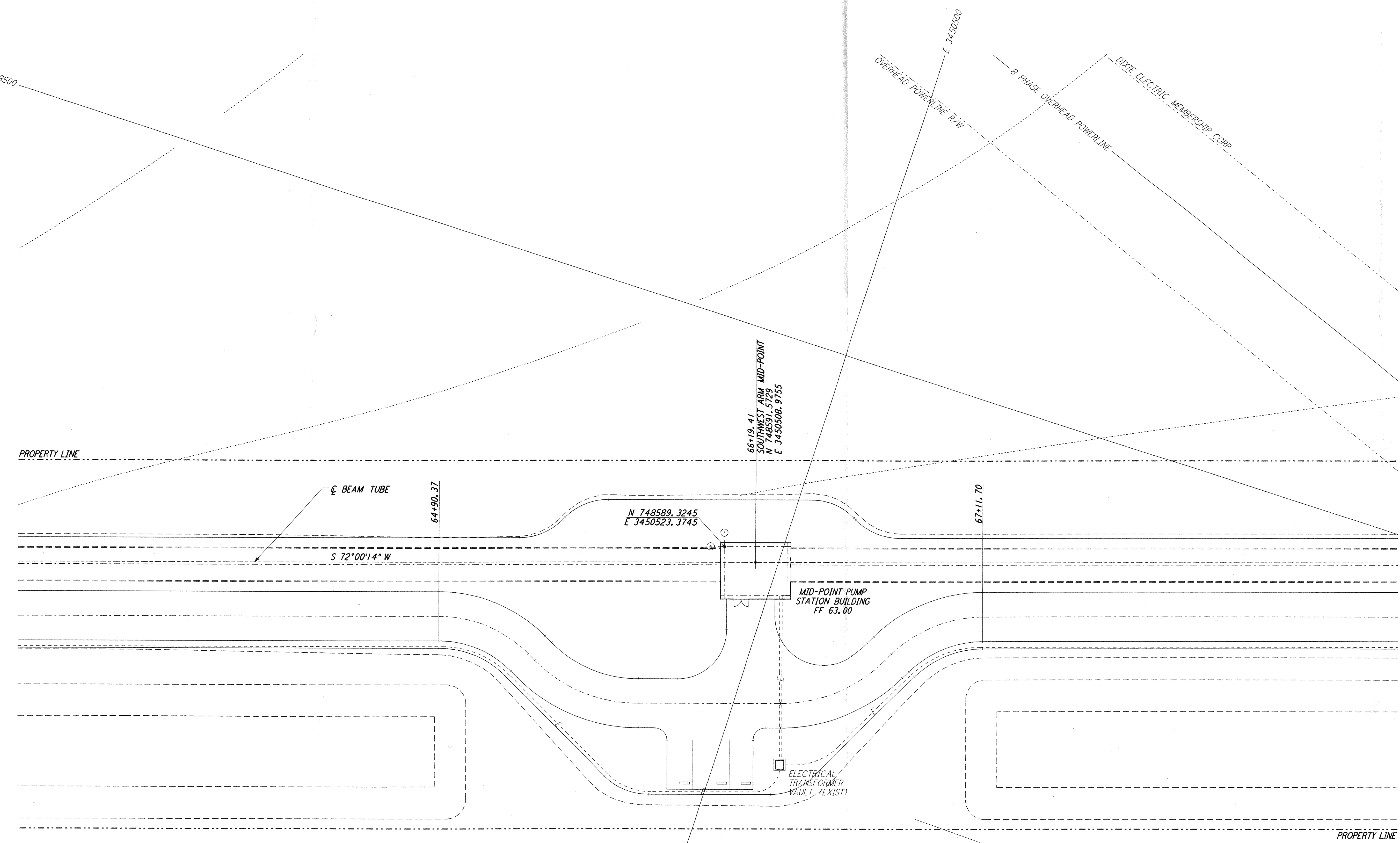
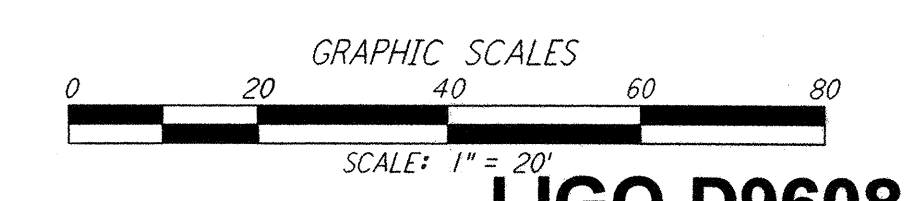
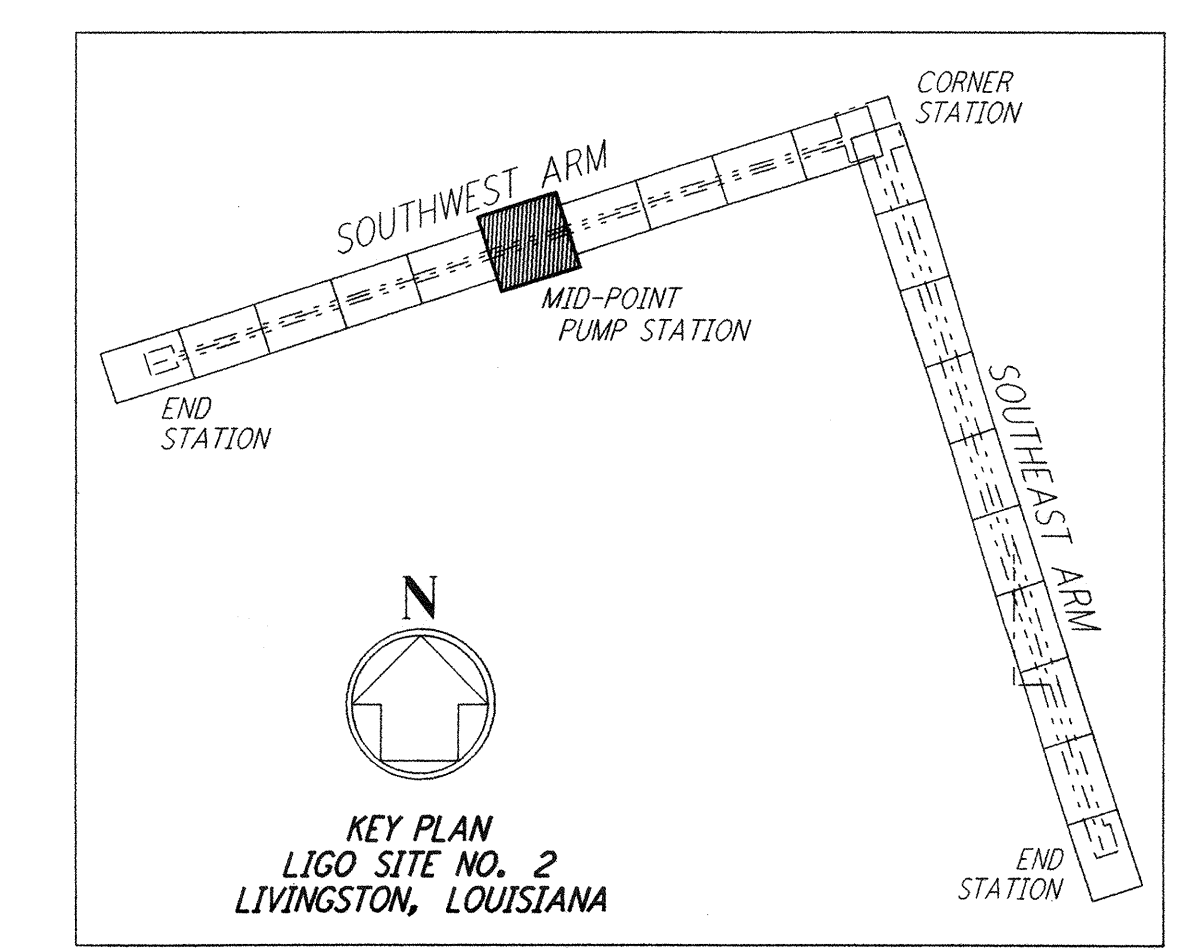


NOTES:
1. SEE SHEET LA-C-002 FOR GENERAL NOTES, LEGEND AND ABBREVIATIONS.



not be reproduced, copied, loaned, exhibited, or used in any other way, except by written consent from PARSONS to the borrower.

This document and the design it covers are the property of PARSONS. They are loaned only with the borrower's expressed written agreement that they will



LIGO-D960841-02-0

LASER INTERFEROMETER
GRAVITATIONAL-WAVE OBSERVATORY
SITE NO. 2 - LIVINGSTON, LOUISIANA

DRAWING NO.	DESCRIPTION	NO.	DATE	BY	CHKD	ENGR	PROJ	DESCRIPTION
		2	08-07-98	WRB	(1)	JD	NW	ISSUED FOR AS-BUILT
		1	2-3-97	WRB	YL	JB	TDM	REVISED MID STATION

ISSUED FOR CONSTRUCTION			
DRAWN	WRB	11-15-96	
CHECKED	ML	11-15-96	
ENGINEER	JB	11-15-96	
PROJ	TDM	11-15-96	
AS-BUILT DRAWINGS			

PARSONS
100 WEST WALNUT STREET
PASADENA, CALIFORNIA

LIGO
CALIFORNIA INSTITUTE OF TECHNOLOGY
MASSACHUSETTS INSTITUTE OF TECHNOLOGY

TITLE	CIVIL SOUTHWEST ARM PUMP STATION UTILITY PLAN	SCALE	1" = 20'	CONTINENT NUMBER	PP150969	PROJECT NUMBER	8094
		LA-C-023					