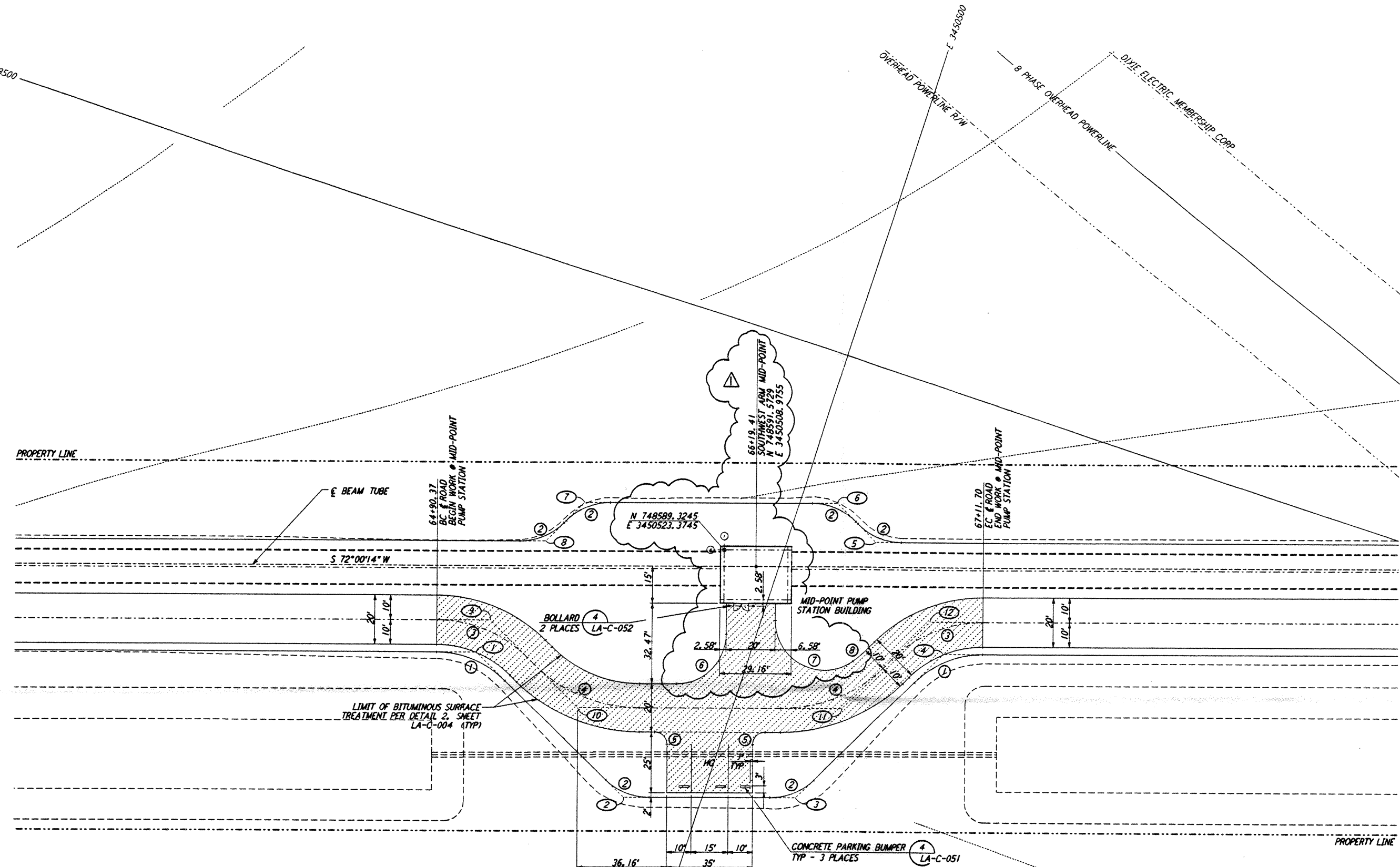
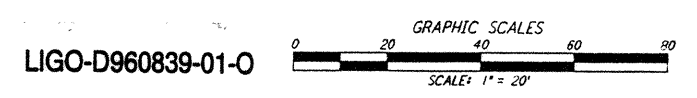
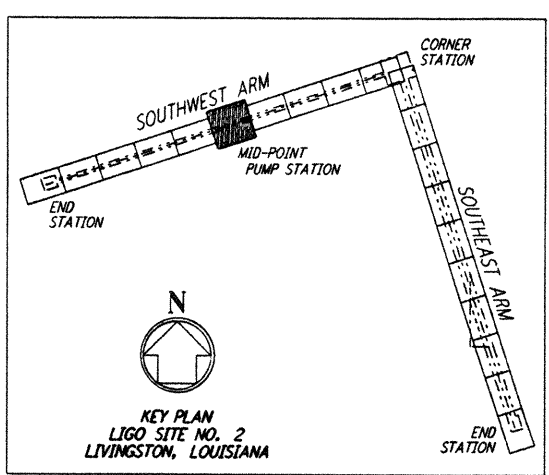


**NOTES:**  
 1. SEE SHEET LA-C-002 FOR GENERAL NOTES, LEGEND AND ABBREVIATIONS.



CURVE DATA					
Δ	RADIUS	LENGTH	TANGENT	REMARK	
1	45°00'00"	39'	30.63'	16.16'	EDGE OF PAD (EXIST)
2	45°00'00"	25'	19.63'	10.36'	EDGE OF PAD (EXIST)
3	45°00'00"	52'	40.84'	21.54'	EDGE OF ROAD
4	45°00'00"	60'	47.12'	24.85'	EDGE OF ROAD
5	90°00'00"	5'	7.85'	5.00'	
6	90°00'00"	20'	31.42'	20.00'	
7	125°49'51"	20'	43.92'	39.11'	
8	9°10'08"	50'	8.00'	4.01'	

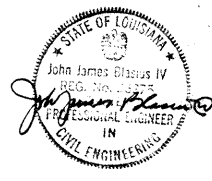
COORDINATES			REMARK
Δ	NORTH	EAST	
1	748659.7365	3450605.5239	PT EDGE OF PAD (EXIST)
2	748697.9299	3450530.5654	PT EDGE OF PAD (EXIST)
3	748676.2822	3450463.9403	PT EDGE OF PAD (EXIST)
4	748601.3395	3450425.7549	PT EDGE OF PAD (EXIST)
5	748587.0308	3450465.7924	PT EDGE OF PAD (EXIST)
6	748557.0626	3450485.3564	PT EDGE OF PAD (EXIST)
7	748588.8911	3450583.2149	PT EDGE OF PAD (EXIST)
8	748608.4436	3450593.2774	PT EDGE OF PAD (EXIST)
9	748645.7089	3450604.4199	PT EDGE OF ROAD
10	748668.4802	3450559.7285	PT EDGE OF ROAD
11	748625.3154	3450457.6570	PT EDGE OF ROAD
12	748590.6389	3450434.8926	PT EDGE OF ROAD



This document and the design it covers are the property of PARSONS. They are loaned only with the borrower's expressed written agreement that they will not be reproduced, copied, loaned, exhibited, or used in any other way, except by written consent from PARSONS to the borrower.

NO.	DATE	BY	CHKD	ENGR	PROJ	DESCRIPTION
1	2-3-97	WRB	CL	SP	TEM	REVISED MID STATION, CURVE DATA

ISSUED FOR CONSTRUCTION  
 DRAWN: WRB 11-15-96  
 CHECKED: ML 11-15-96  
 ENGINEER: JB 11-15-96  
 PROJ: TEM 11-15-96



**PARSONS**  
 100 WEST WALNUT STREET  
 PASADENA, CALIFORNIA

**LIGO**  
 CALIFORNIA INSTITUTE OF TECHNOLOGY  
 MASSACHUSETTS INSTITUTE OF TECHNOLOGY

LASER INTERFEROMETER  
 GRAVITATIONAL-WAVE OBSERVATORY  
 SITE NO. 2 - LIVINGSTON, LOUISIANA

CIVIL  
 SOUTHWEST ARM  
 PUMP STATION  
 PLOT PLAN

SCALE: 1" = 20'  
 CONTRACT NUMBER: PPI 50969  
 PROJECT NUMBER: 8094  
 SHEET NUMBER: LA-C-021