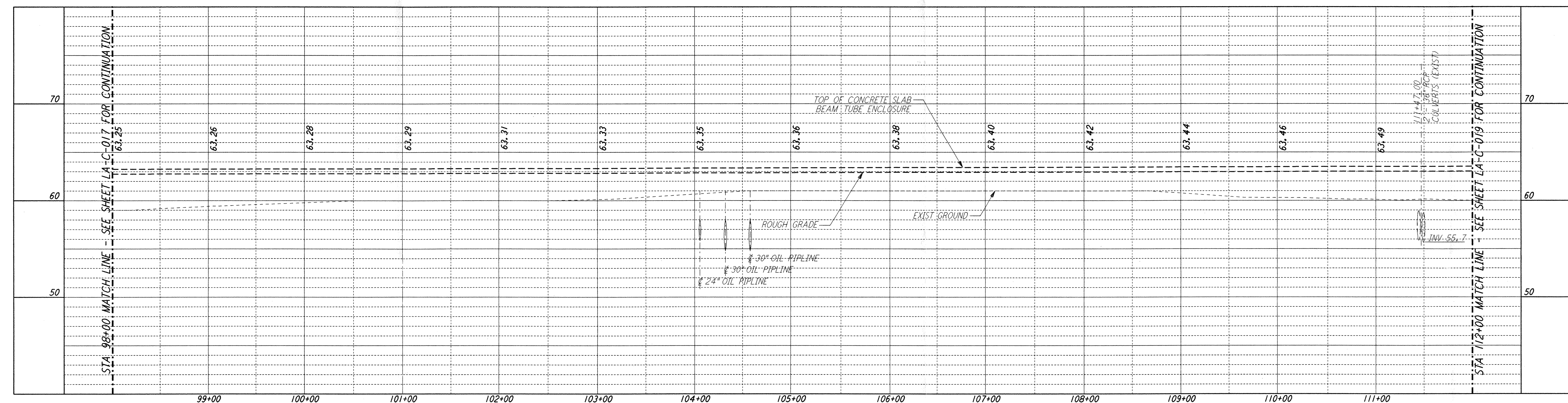
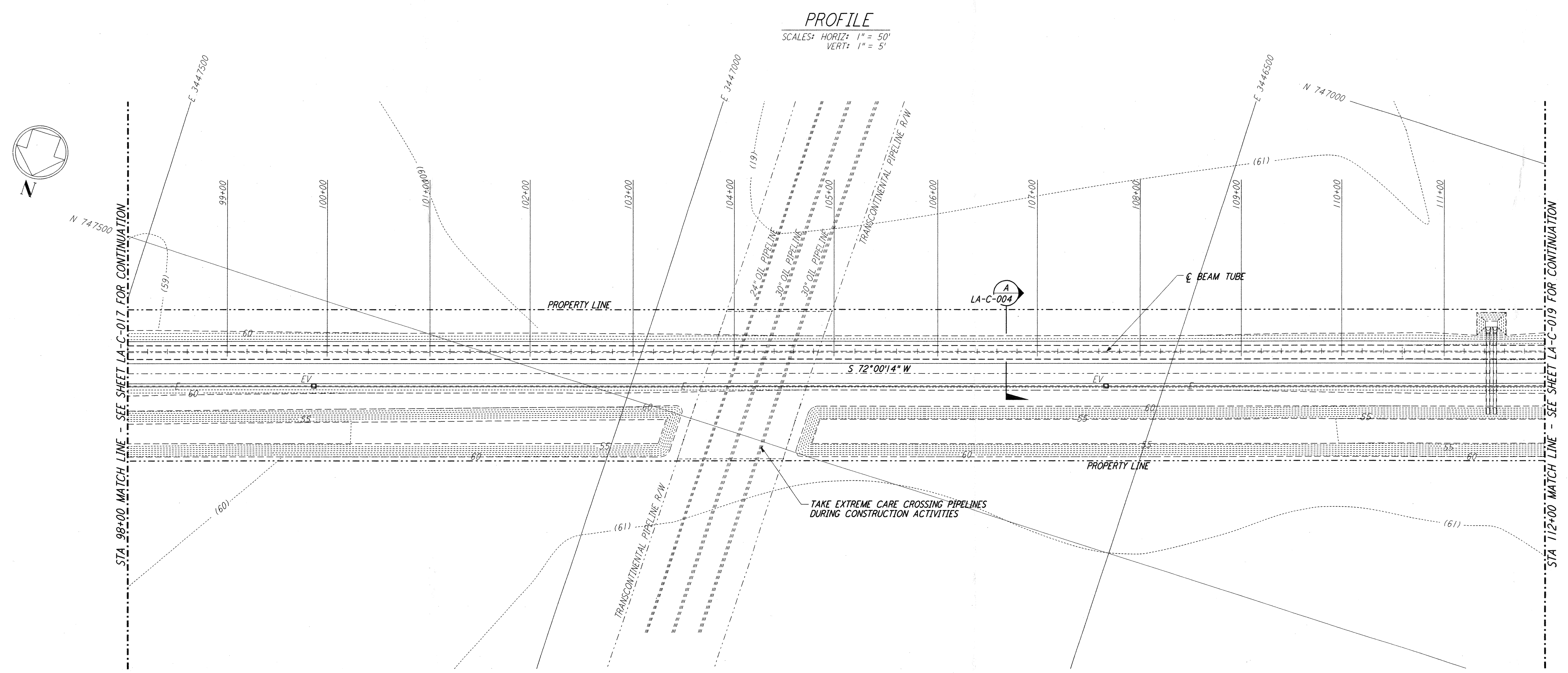


This document and the design it covers are the property of **PARSONS**. They are loaned only with the borrower's expressed written agreement that they will not be reproduced, copied, loaned, exhibited, or used in any other way, except by written consent from **PARSONS** to the borrower.



- NOTES:**
- SEE SHEET LA-C-002 FOR GENERAL NOTES, LEGEND AND ABBREVIATIONS.
 - SEE SHEET LA-C-004 FOR TYPICAL SECTIONS AND DETAILS.

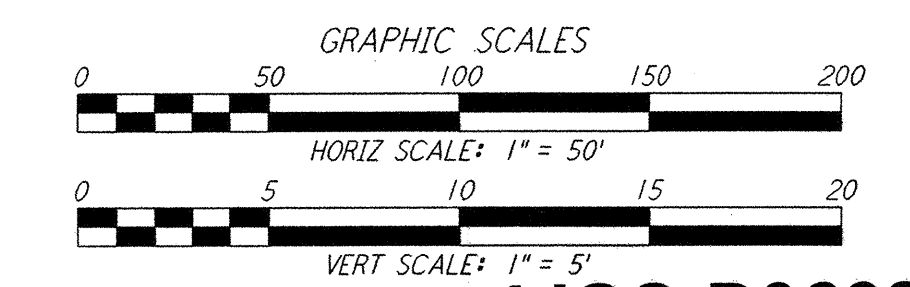
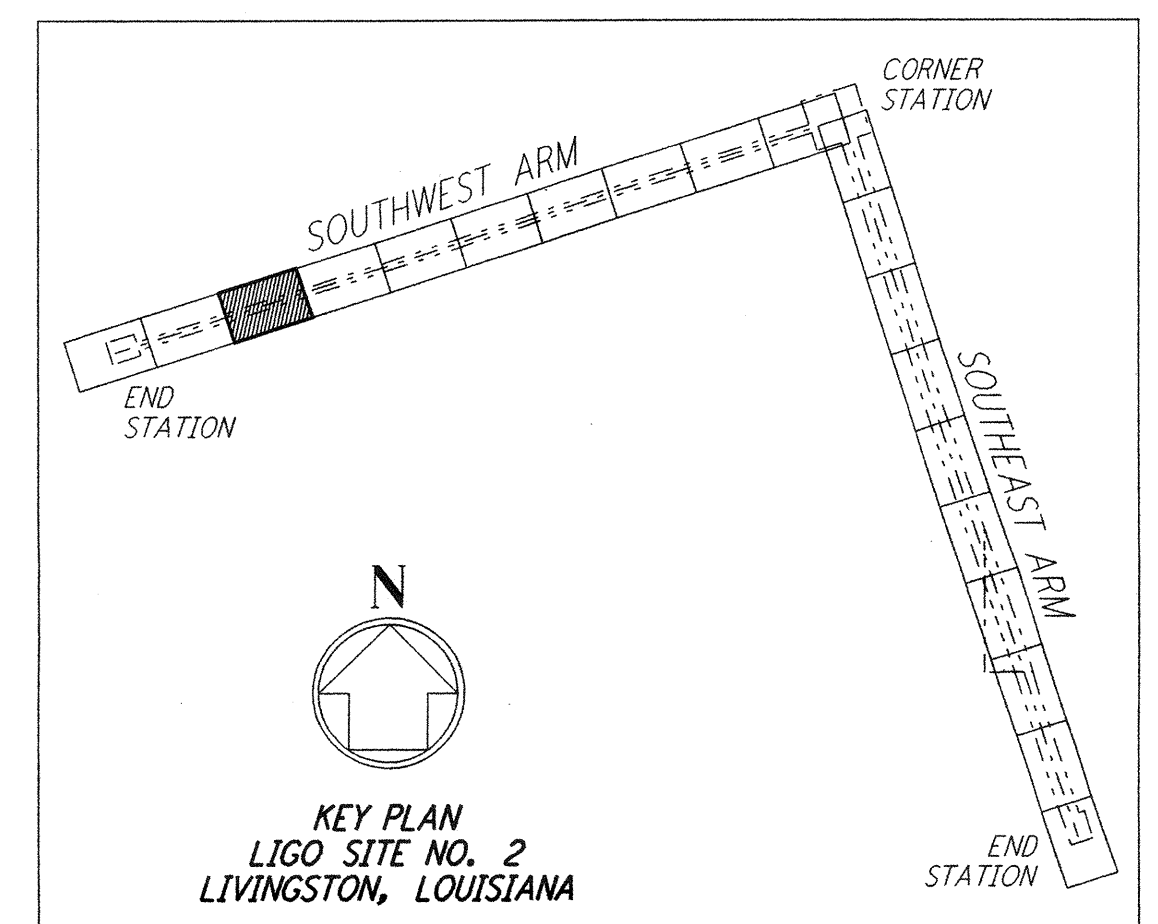


PROFILE
 SCALES: HORIZ: 1" = 50'
 VERT: 1" = 5'

PLAN
 SCALE: 1" = 50'

NOTE:
 LIGO SOUTHWEST ARM CROSSING OF TRANSCONTINENTAL PIPELINE R/W OCCURS WITHIN LIVINGSTON PARISH, LOUISIANA, TOWNSHIP 6 SOUTH - RANGE 4 EAST, SECTION 4.

TAKE EXTREME CARE CROSSING PIPELINES DURING CONSTRUCTION ACTIVITIES



NO.	DATE	BY	CHKD	ENGR	PROJ	DESCRIPTION
2	08-07-98	WRB	ML	JB	WJW	ISSUED FOR AS-BUILT
1	2-3-97	WRB	ML	JB	TDM	REVISED PROFILE ELEVATIONS

ISSUED FOR CONSTRUCTION		
DRAWN	WRB	11-15-96
CHECKED	ML	11-15-96
ENGINEER	JB	11-15-96
PROJ	TDM	11-15-96

AS-BUILT DRAWINGS

PARSONS
 100 WEST WALNUT STREET
 PASADENA, CALIFORNIA

LIGO
 CALIFORNIA INSTITUTE OF TECHNOLOGY
 MASSACHUSETTS INSTITUTE OF TECHNOLOGY

LIGO-D960836-02-0
 LASER INTERFEROMETER
 GRAVITATIONAL-WAVE OBSERVATORY
 SITE NO. 2 - LIVINGSTON, LOUISIANA

TITLE	SCALE	CONTRACT NUMBER	PROJECT NUMBER
CIVIL SOUTHWEST ARM PLAN AND PROFILE STA 98+00 TO STA 112+00	AS NOTED	PP150969	8094
SHEET NUMBER	REVISIONS		
LA-C-018	2		