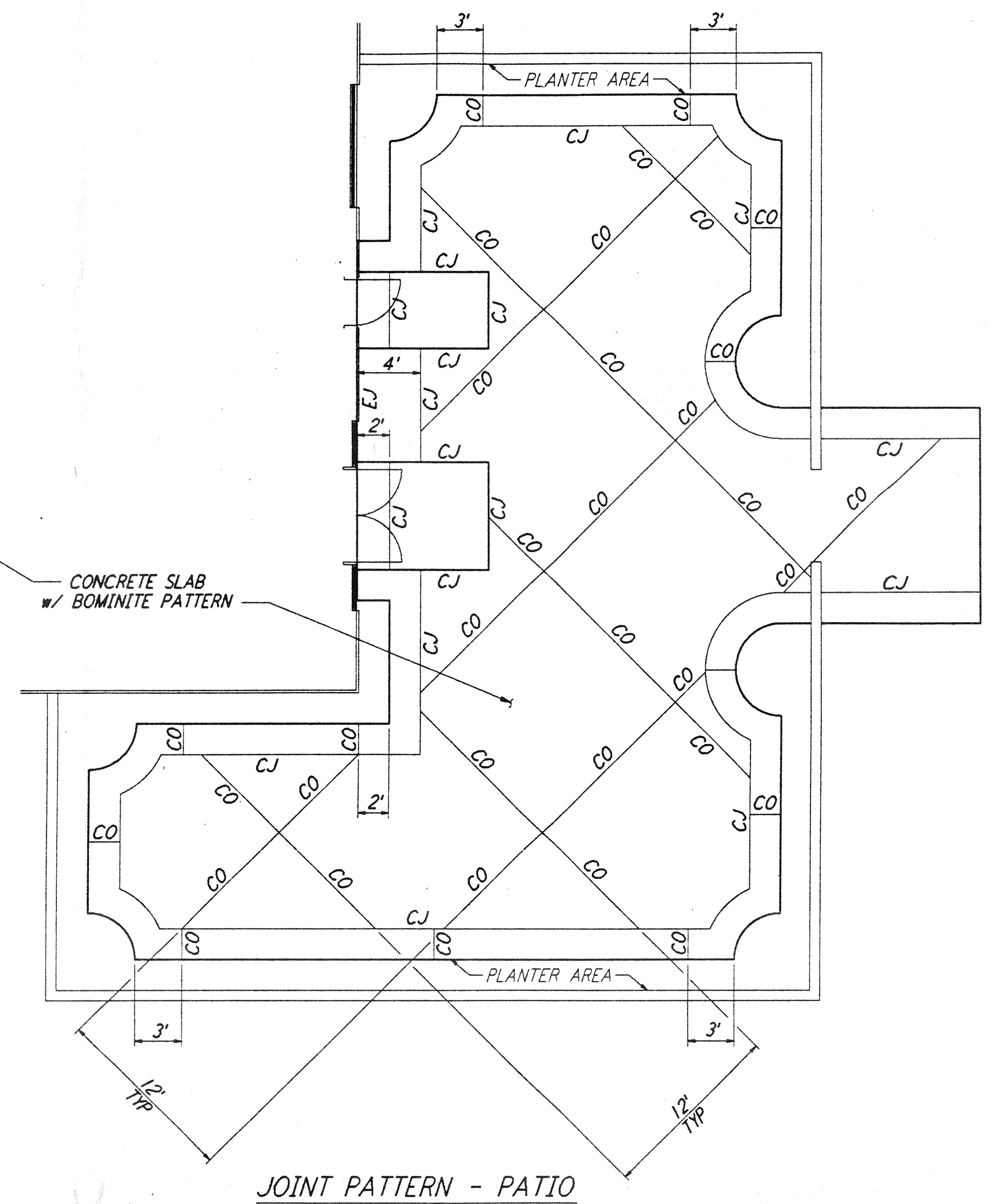
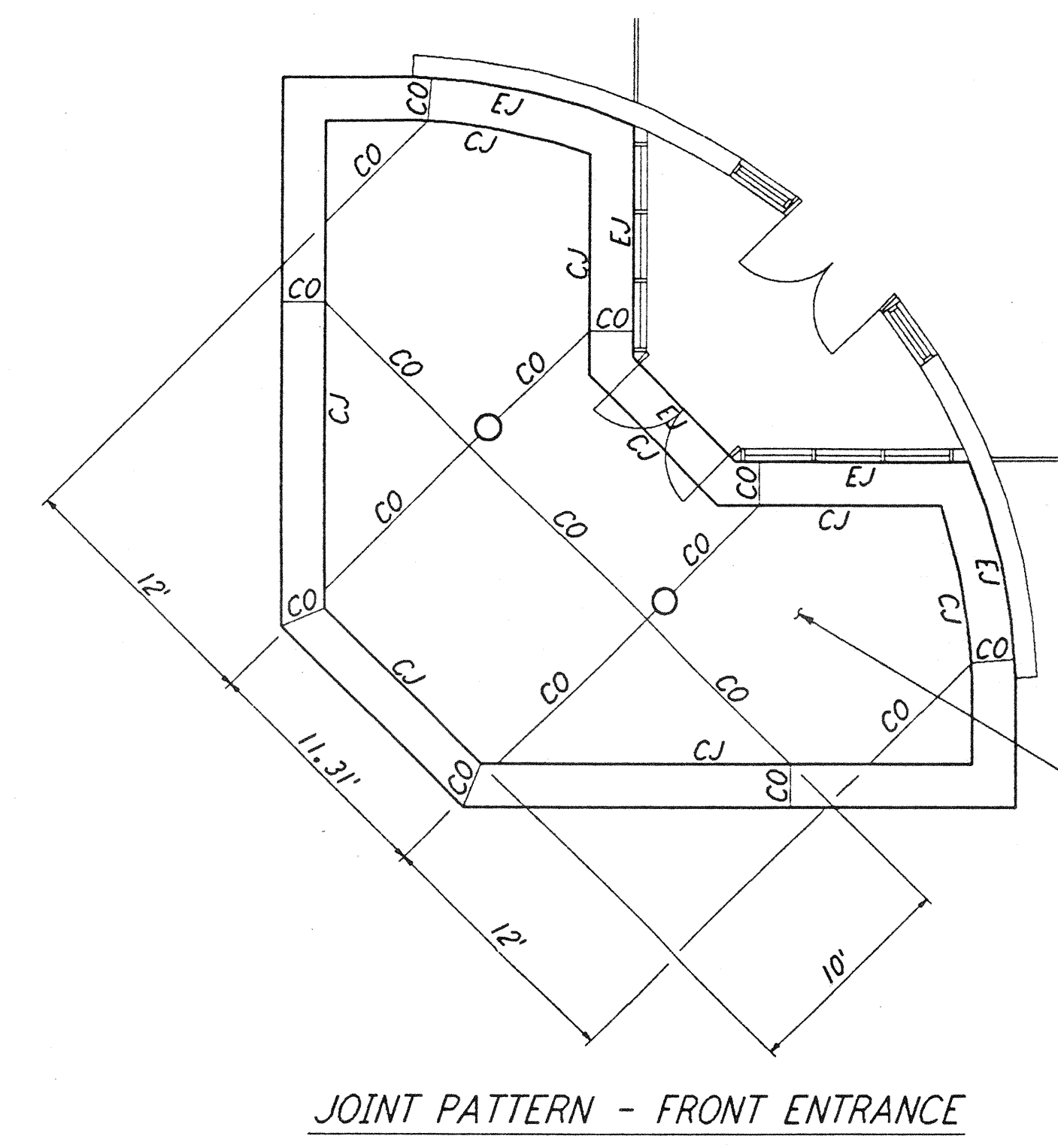
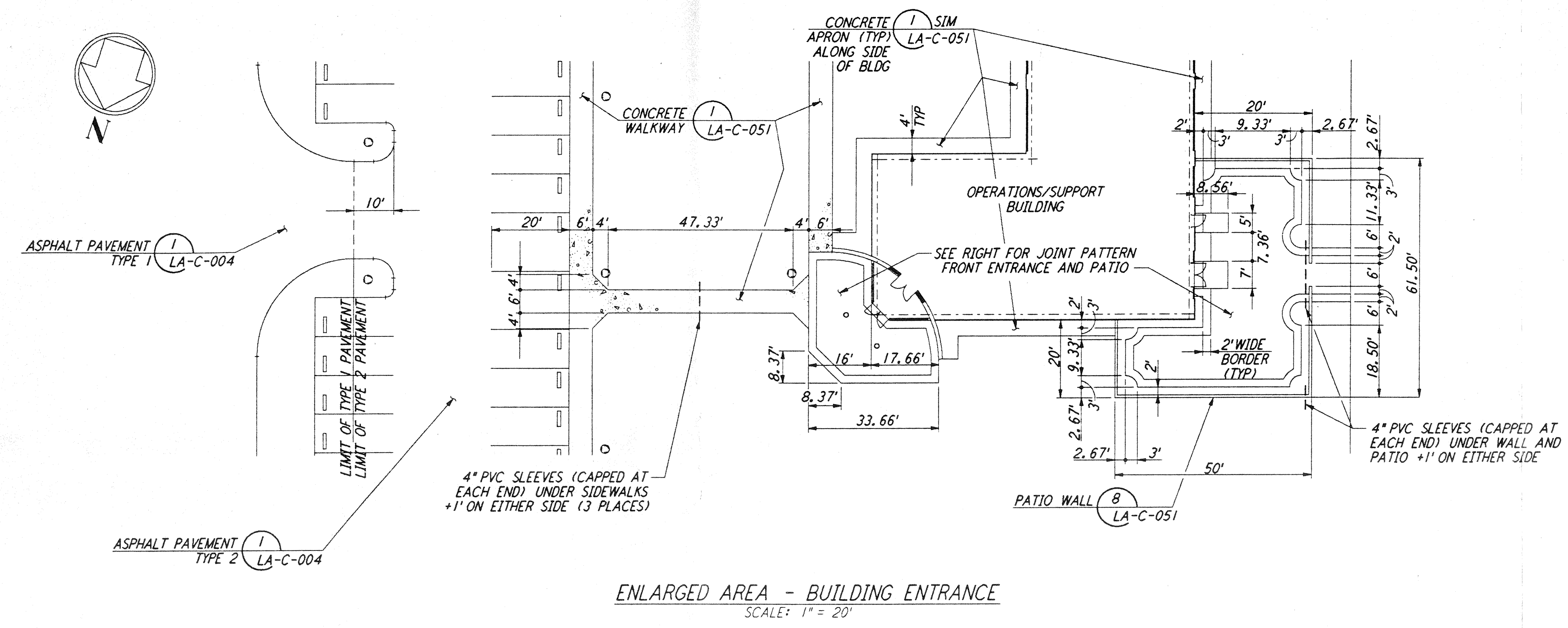
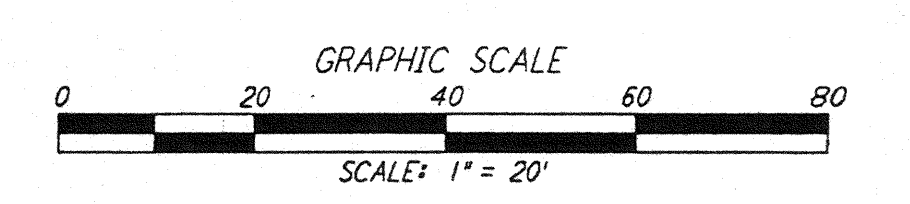
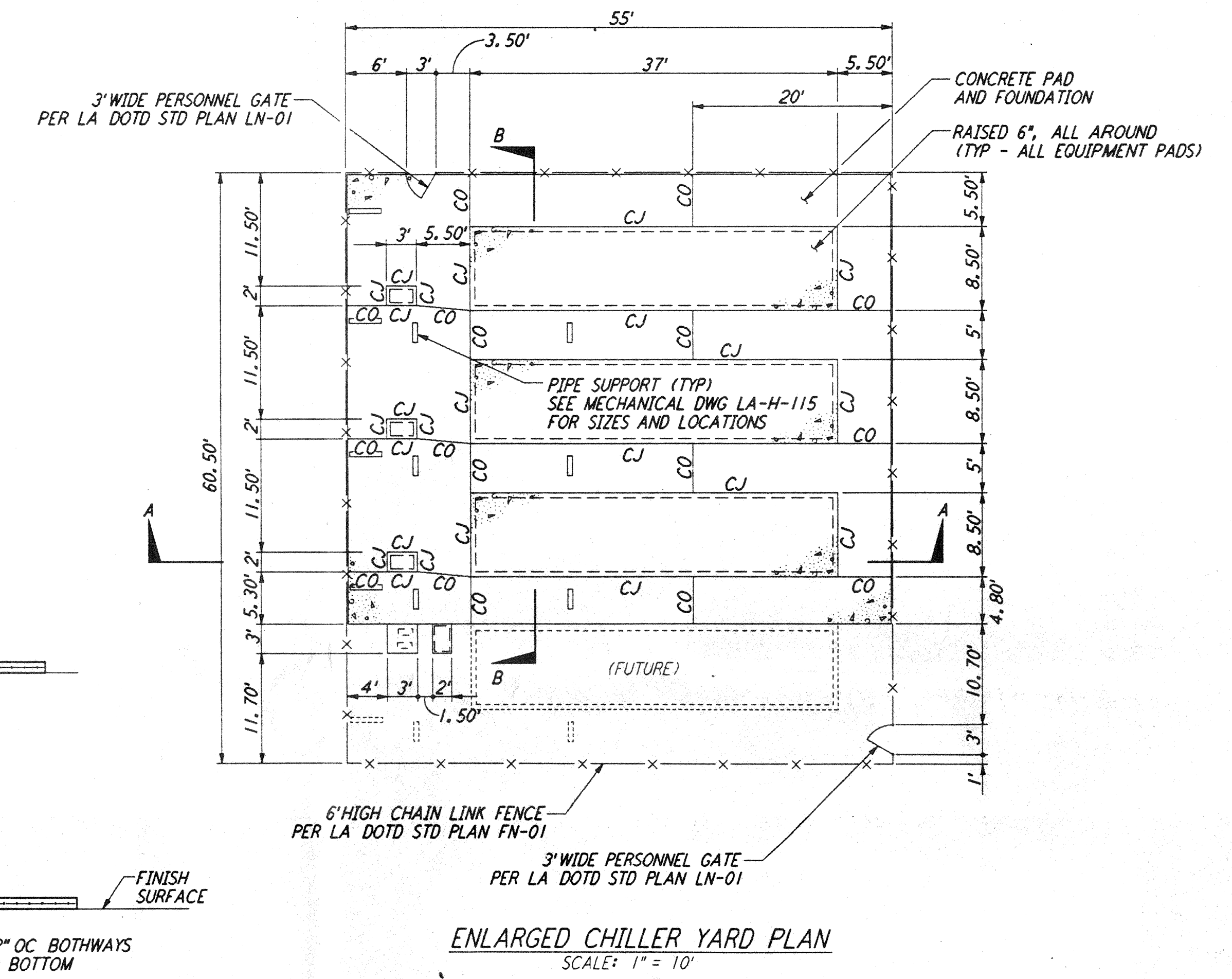
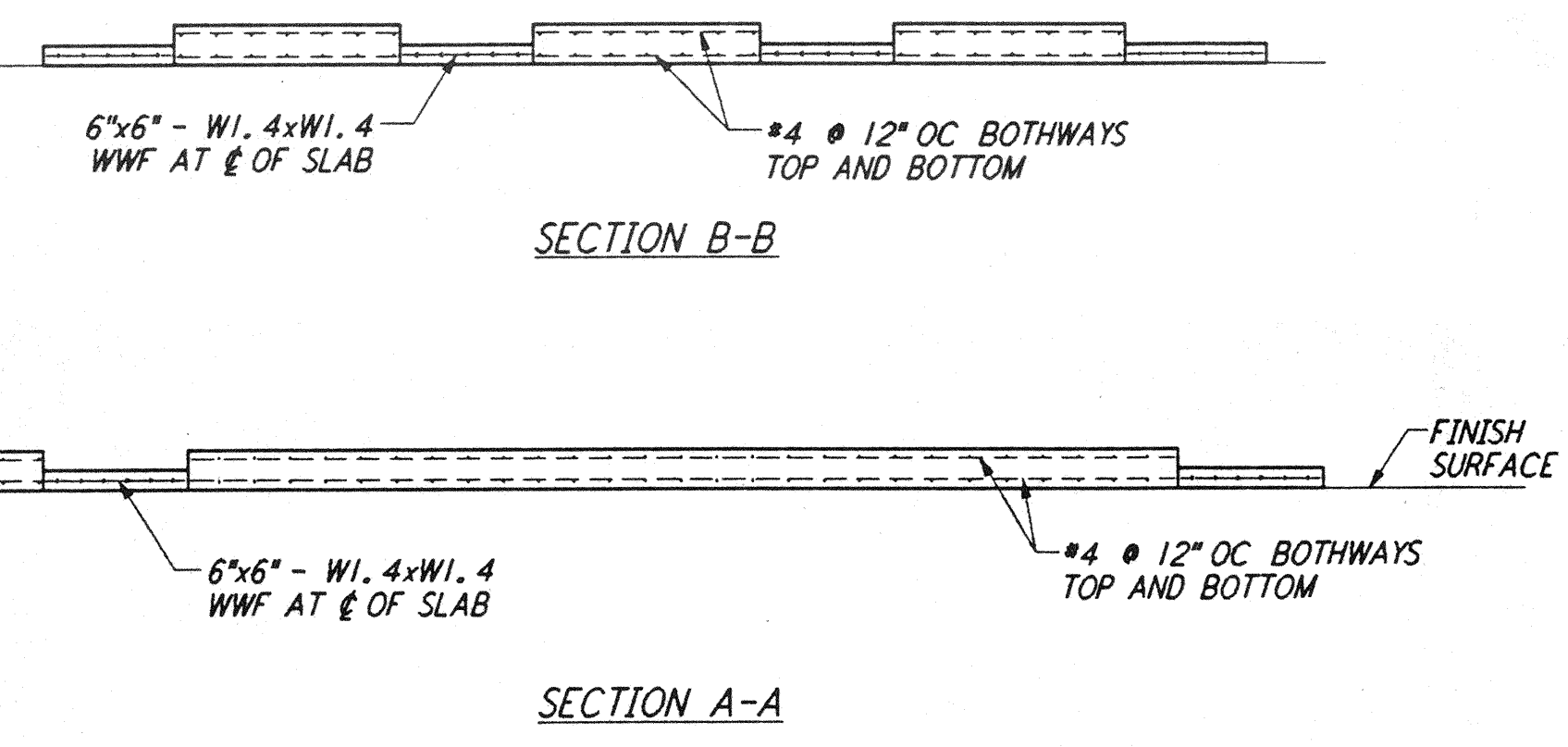
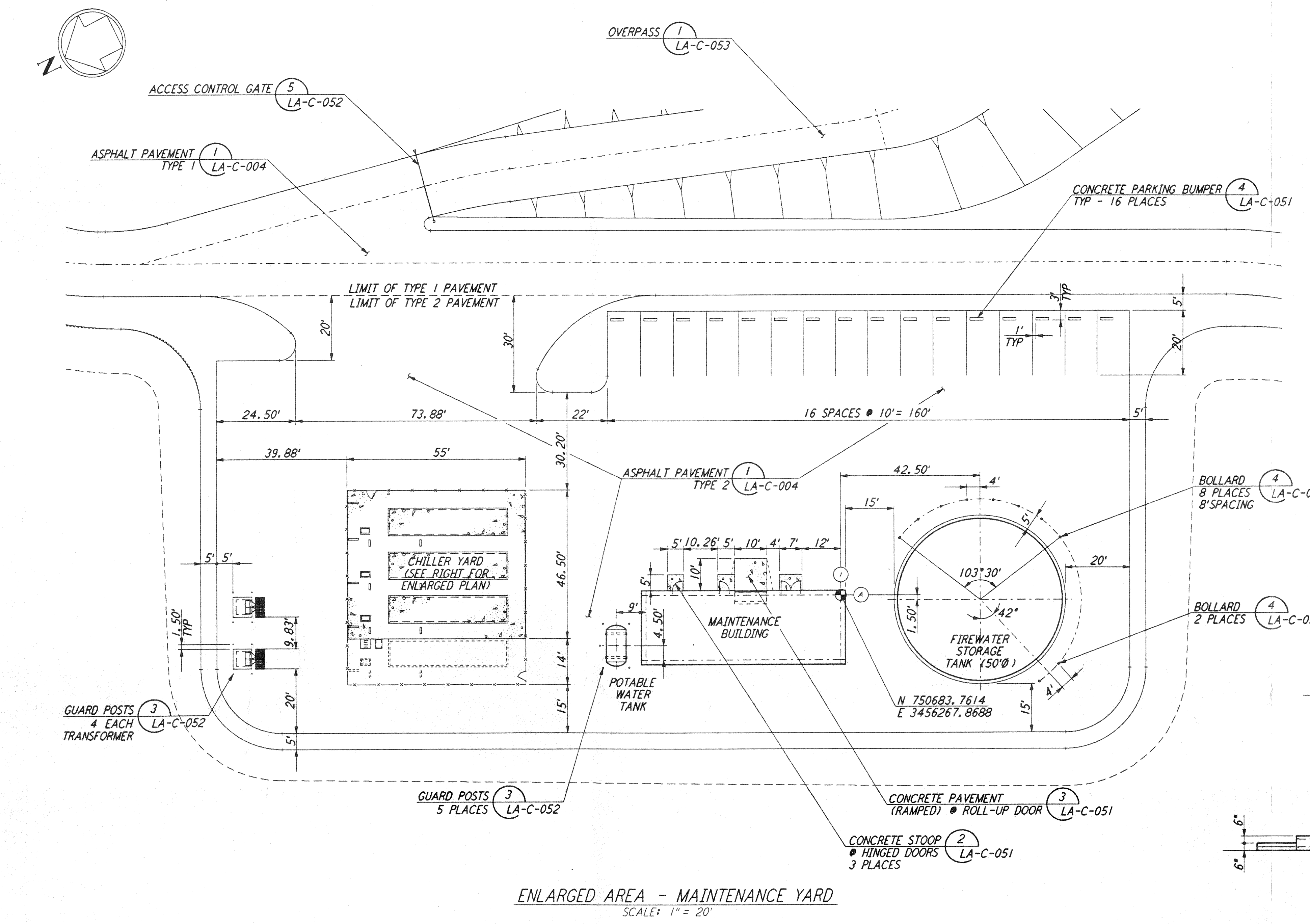


This document and the design it covers are the property of PARSONS. They are loaned only with the borrower's expressed written agreement that they will not be reproduced, copied, loaned, exhibited, or used in any other way, except by written consent from PARSONS to the borrower.



NOTES:
 1. SEE SHEET LA-C-002 FOR GENERAL NOTES, LEGEND AND ABBREVIATIONS.
 2. SEE SHEET LA-C-005 FOR CURVE DATA.



NO.	DATE	BY	CHKD	ENGR	PROJ	DESCRIPTION

ISSUED FOR CONSTRUCTION	DATE	BY
DRAWN	11-15-96	WRB
CHECKED	11-15-96	WHL
ENGINEER	11/15/96	SB
PROJ	11/15/96	WHL

Jeffrey Pleasant
 11/15/96

PARSONS
 100 WEST WALNUT STREET
 PASADENA, CALIFORNIA

LIGO
 CALIFORNIA INSTITUTE OF TECHNOLOGY
 MASSACHUSETTS INSTITUTE OF TECHNOLOGY

LASER INTERFEROMETER
 GRAVITATIONAL-WAVE OBSERVATORY
 SITE NO.2 - LIVINGSTON, LOUISIANA
CIVIL CORNER STATION PLOT PLAN ENLARGED PLAN
 SCALE: AS NOTED CONTRACT NUMBER: PPI50969 PROJECT NUMBER: 8094
 SHEET NUMBER: **LA-C-006** REVISIONS: