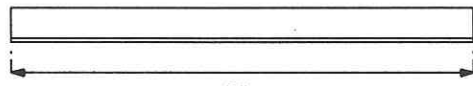
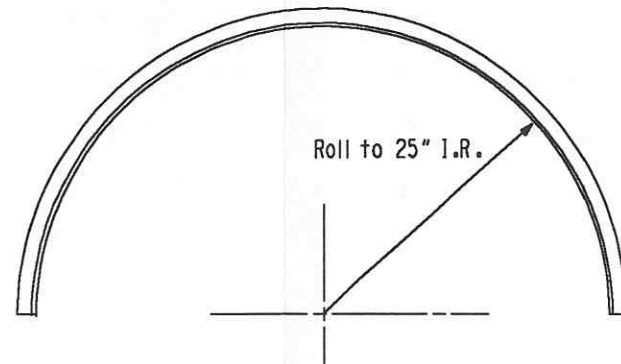


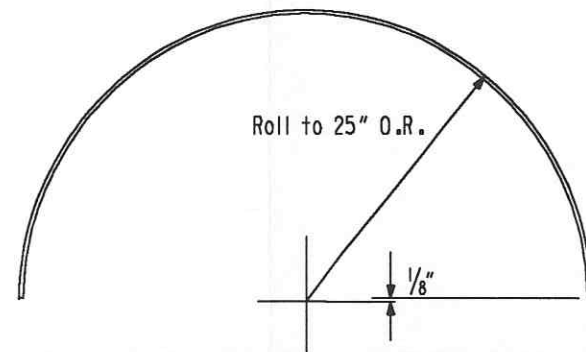
⑩ 66"
Make from 3" x 3" x 1/4"
A36 angle (2 pcs. req'd.)



⑭ 40"
Make from 3" x 3" x 1/4"
A36 angle (2 pcs. req'd.)



Pc. #5 2" x 2" x 1/4" 304ss angle
Roll a half circle to 25" I.R.
(4 pcs. req'd.)

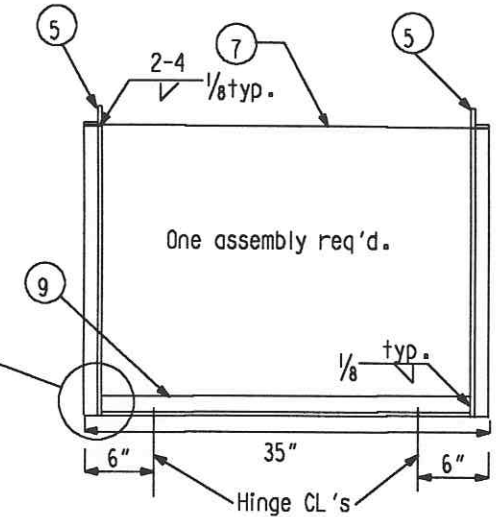
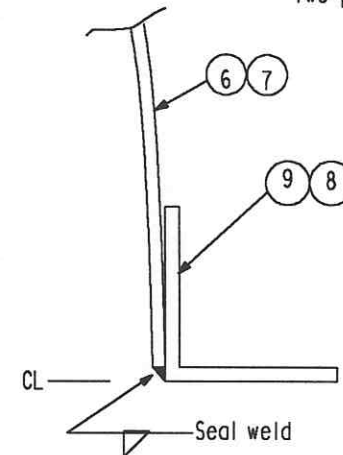


Pc. #6 & #7 Make from .10" thk. (18 ga. min.) 304 ss
Roll a half circle minus 1/8" to 25" O.R.
One pc. 35" long, one piece 70" long

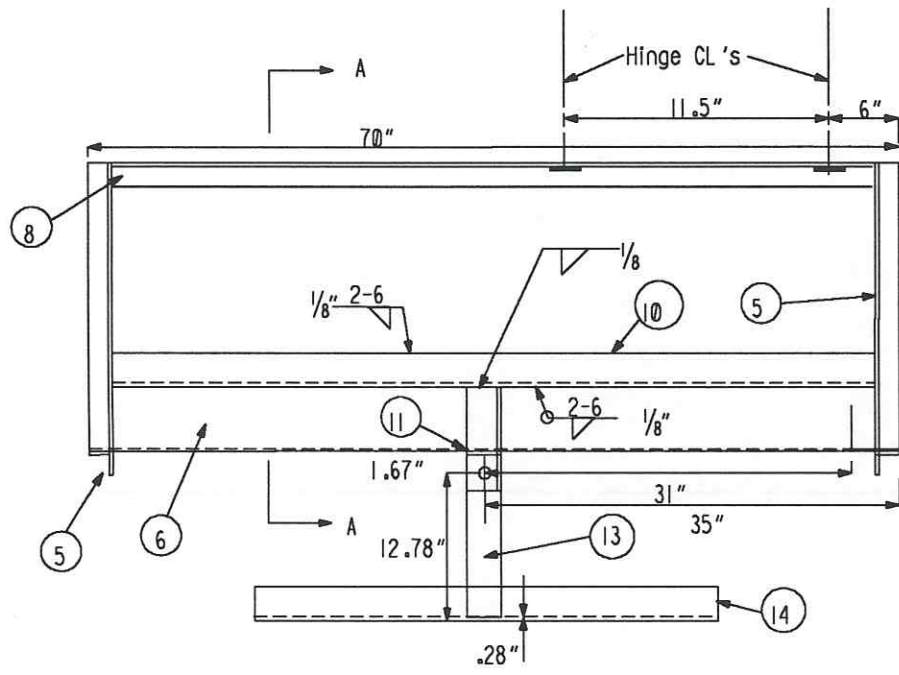
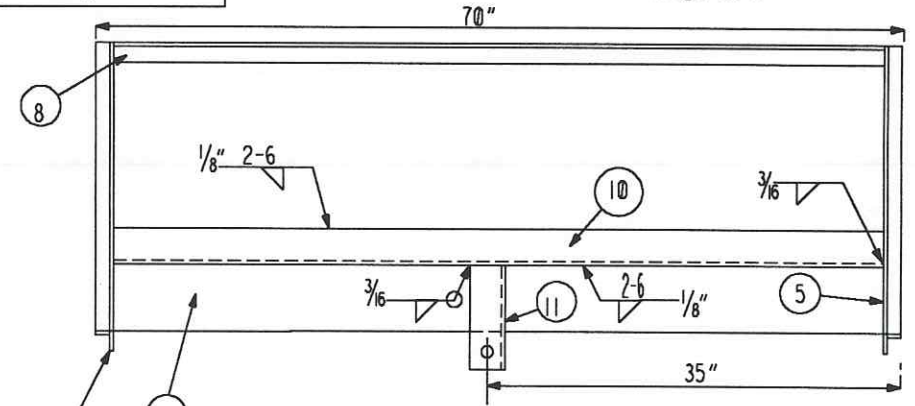
Also provide one pair of McMaster-Carr
#1624A76 stainless steel hinges



Pc. #8 & #9 Make from 2" x 2" x 1/4" 304ss angle
Two pieces 66" long, two pieces 31" long

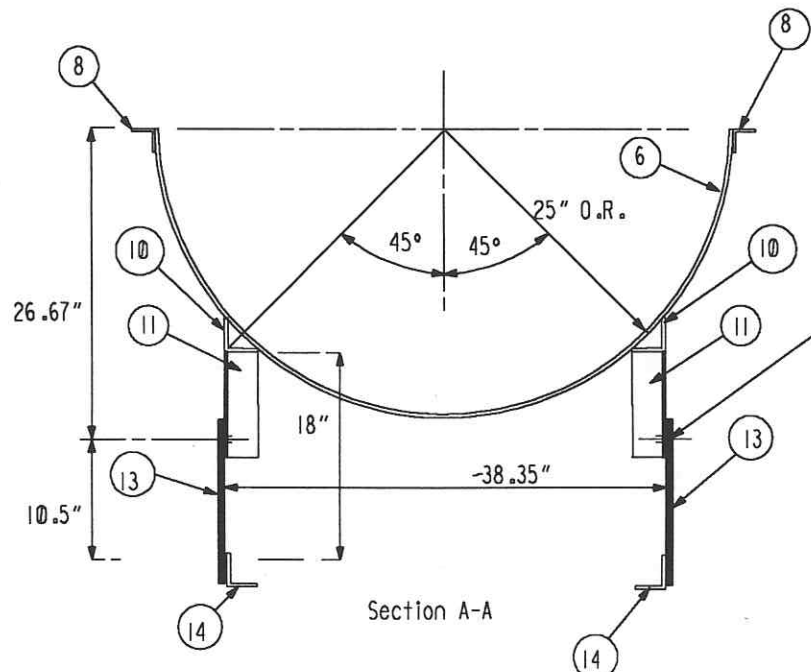


All carbon steel parts are to be epoxy painted after fabrication and assembly



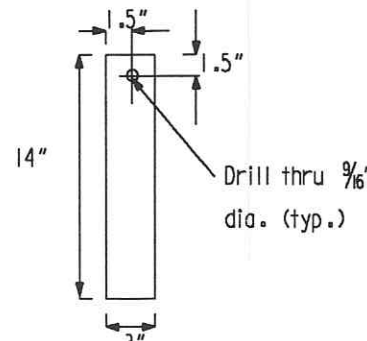
One assembly req'd.

One assembly req'd.

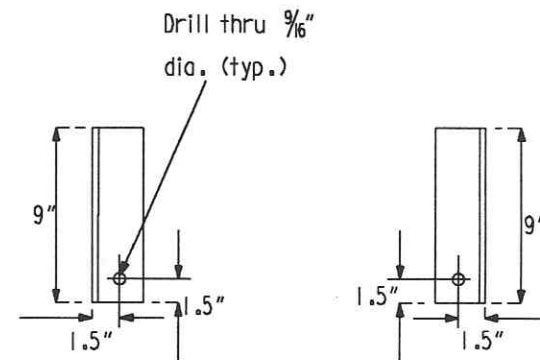


Section A-A

⑫ Use a 1/2" bolt and lock nut for pivot pins.
(2 req'd.)



⑬ Make from A36 plate
1/4" thk. (2 pcs. req'd.)



⑪ Make from 3" x 3" x 1/4" A36
angle (one left hand, one right hand)

INDICATES CHANGE FROM PREVIOUS ISSUE

Supplier's/Purchaser's No.		Contract No.	
CBI		953571	
LIGO-BEAM TUBE HANFORD, WA & LIVINGSTON, LA			
CLEANING ROOM EQUIPMENT FLUID TILTING EXTENSION			
Customer's No.		Contract No.	
By EPD <i>add</i> Date 6-03-76		953571	
M. L. TELLALIAN Engineering Supervisor		Dwg. ER307 Sheet	
LIGO-D960807-00-B			