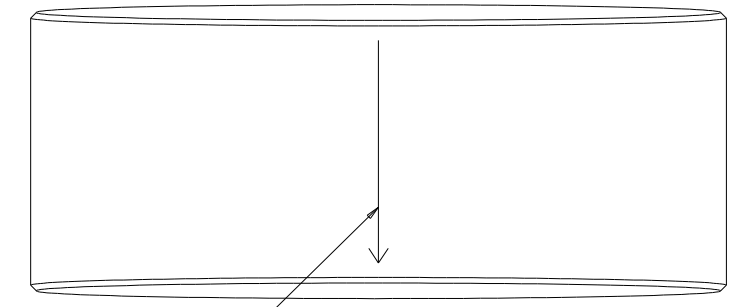
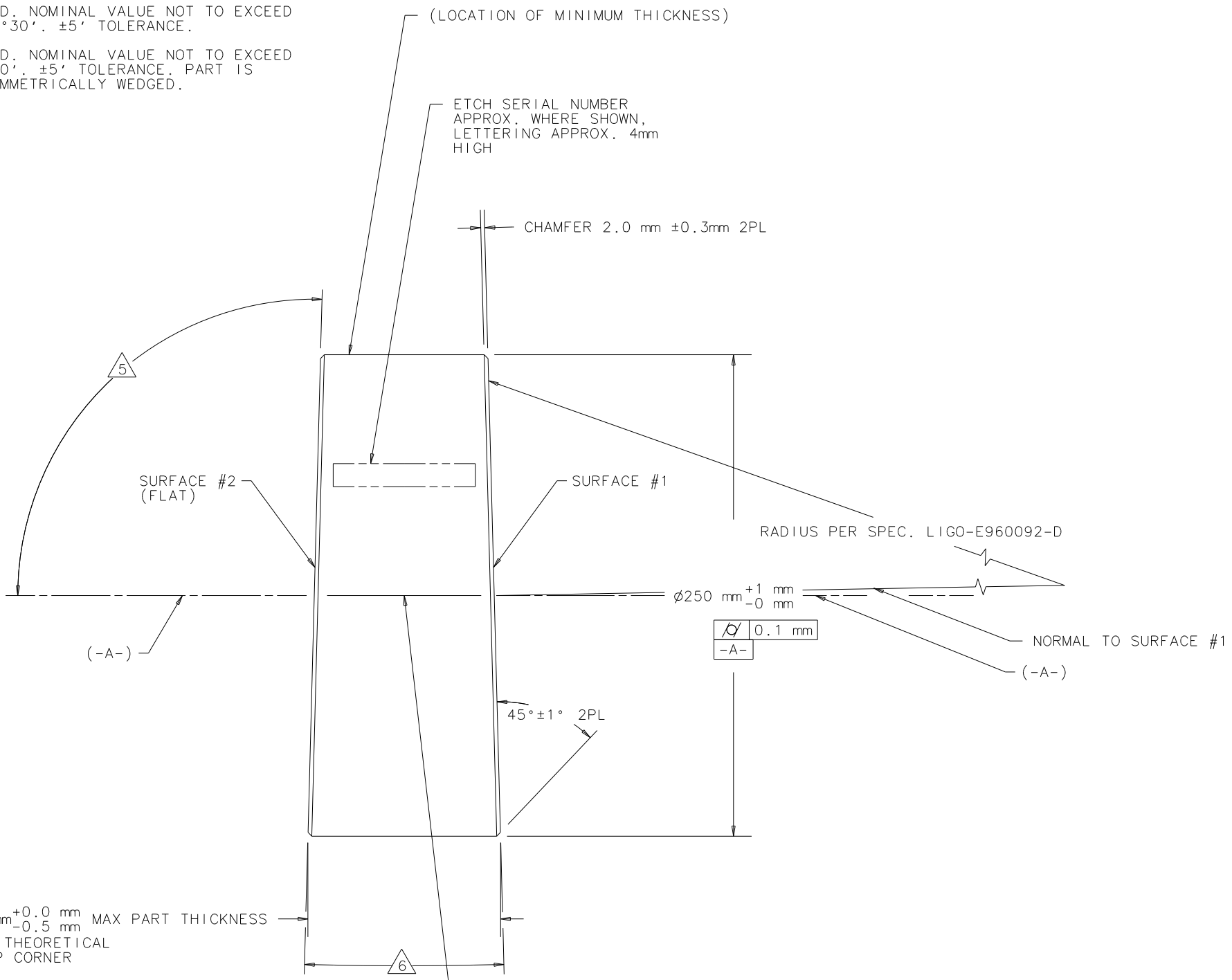


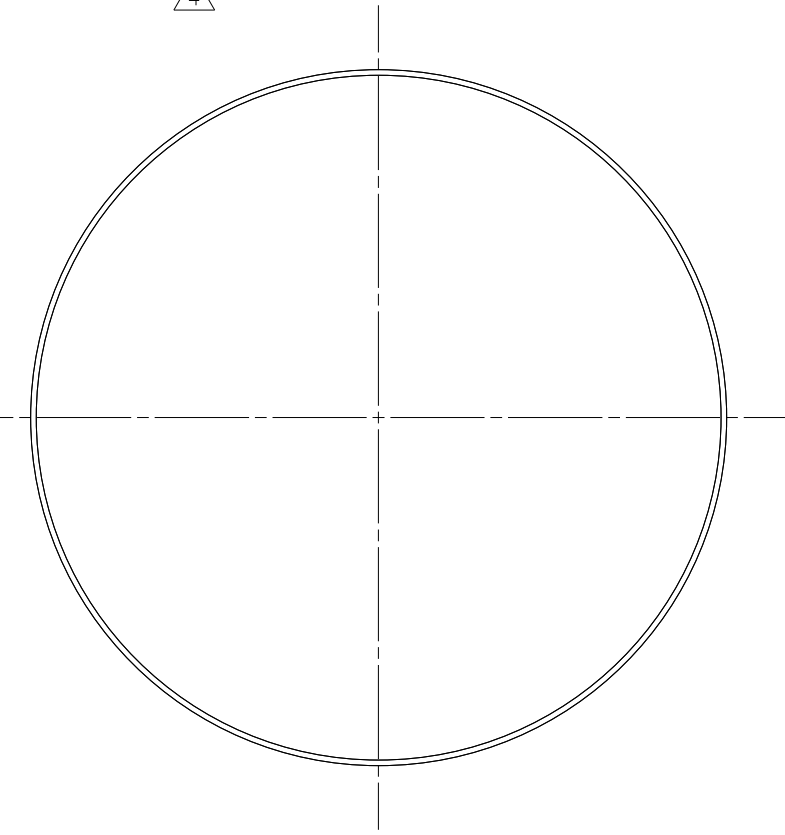
REV	DATE	DRAWN BY	CHECKED	DCC	DCN/DESCRIPTION
A	9-8-96	C CONLEY			E960113/INITIAL RELEASE

- NOTES: (UNLESS OTHERWISE SPECIFIED)
- ALL DIMENSIONS ARE IN MILLIMETERS AND DEGREES-MINUTES.
  - DRAWING TO BE INTERPRETED PER ANSI Y14.5M-1982.
  - POLISH ALL FACES, EDGES AND CHAMFERS PER SPECIFICATION LIGO-E960092-D.
  - REGISTRATION MARK IS LOCATED COINCIDENT WITH THE REGISTRATION MARK DRAWN ON THE BLANK ±1mm.
  - TBD. NOMINAL VALUE NOT TO EXCEED 91°30'. ±5' TOLERANCE.
  - TBD. NOMINAL VALUE NOT TO EXCEED 3°0'. ±5' TOLERANCE. PART IS SYMMETRICALLY WEDGED.

D  
C  
B  
A



ETCH 0.25mm ±0.05mm WIDE X 80mm ±5mm LONG LINE WITH ARROW POINTING TOWARD SURFACE #1, PARALLEL TO -A- WITHIN ±0.10mm, CENTERED BETWEEN SURFACES #1 AND #2, AND AT LOCATION OF MINIMUM PART THICKNESS ±0°15'.



DRWN	C CONLEY	DATE	9-8-96	CALIFORNIA INSTITUTE OF TECHNOLOGY MASSACHUSETTS INSTITUTE OF TECHNOLOGY		LIGO PROJECT	
CHKD				CAD FILE: D960785-A_substrate_RM.asc			
ENGR				MATERIAL: FUSED SILICA PER LIGO-E960096-D			
APPD							
DO NOT SCALE DRAWING				SCALE: NTS	SIZE	DRAWING NUMBER	SHEET
				B	D960785-A-D	1	OF 1

D  
C  
B  
A