

FACILITY REQUIREMENTS	
NITROGEN / CLEAR DRY AIR	
SUPPLY PRESSURE	
MINIMUM SUPPLY PRESSURE	8 PSI
MAXIMUM SUPPLY PRESSURE	80 PSI
FLOWRATE	25 LPM
S/S SWAGELOK COMPRESSION	

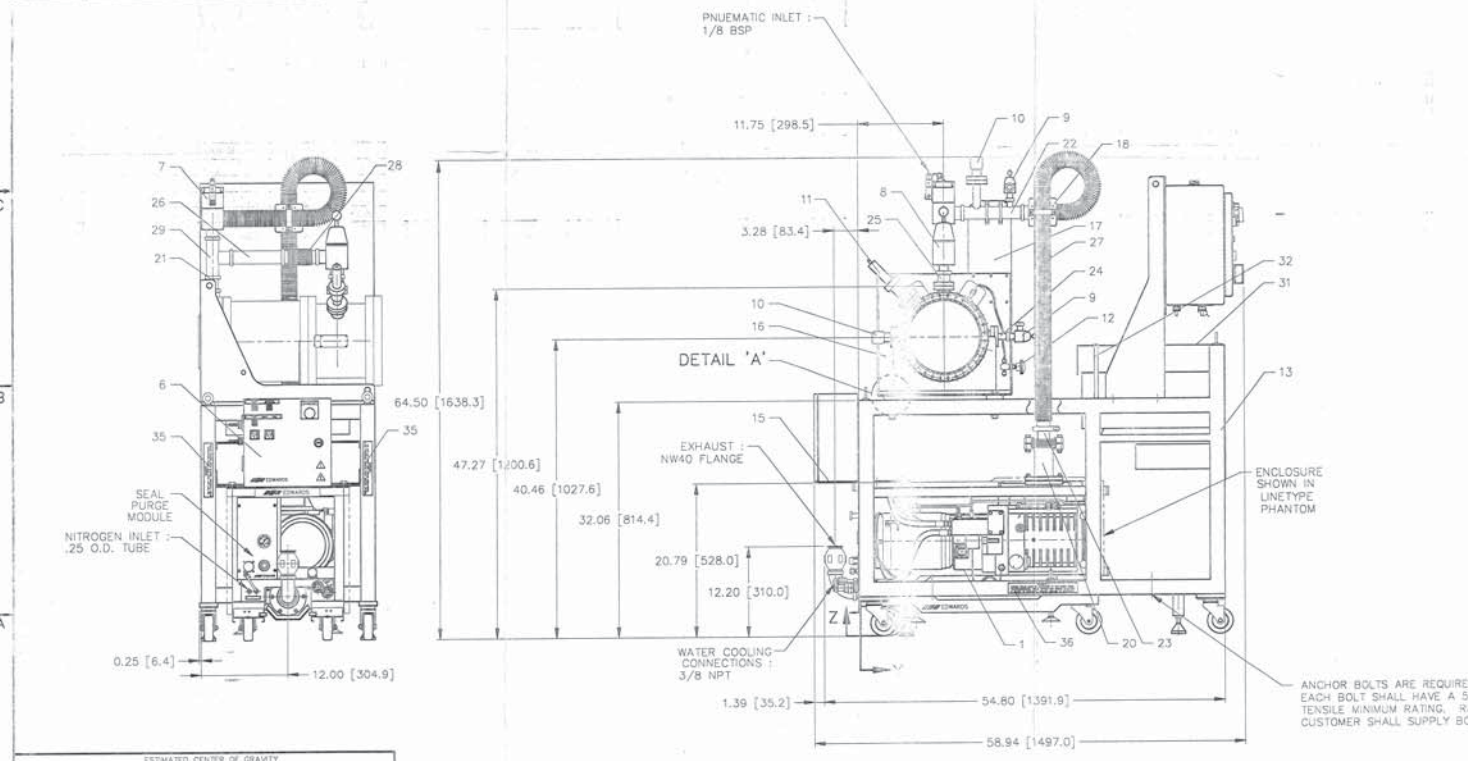
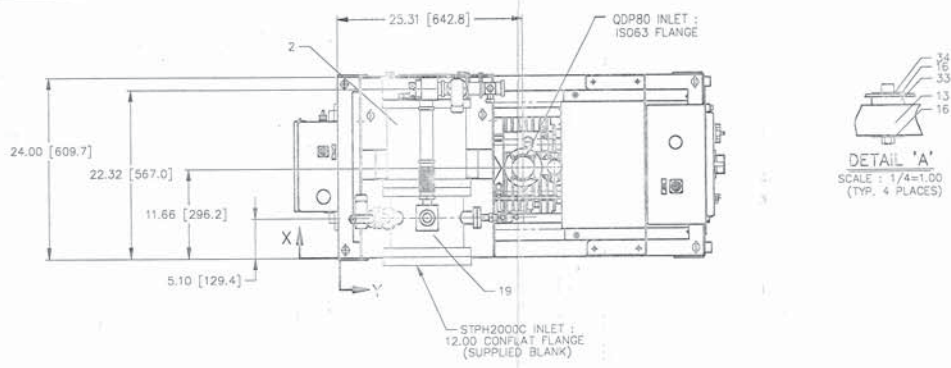
PNEUMATIC SUPPLY	
VALVE PNEUMATIC	40-60 PSI
7/8 BSP CONN.	

PROCESS COOLING WATER	
MAXIMUM PRESSURE	100 PSI
MINIMUM PRESSURE DIFFERENTIAL	30 PSI
TYPICAL FLOWRATE AT 70°C	232 LPH
MAXIMUM FLOWRATE AT 55°C	397 LPH
RECOMMENDED SUPPLY TEMP.	20-25°C
3/8 NPT CONNECTION	

ELECTRICAL	
SUPPLY	SEE ELECTRICAL SCHEMATIC DRAWING NO. NGB050210.
FULL LOAD AMPERAGE	
RECOMMENDED SERVICE	

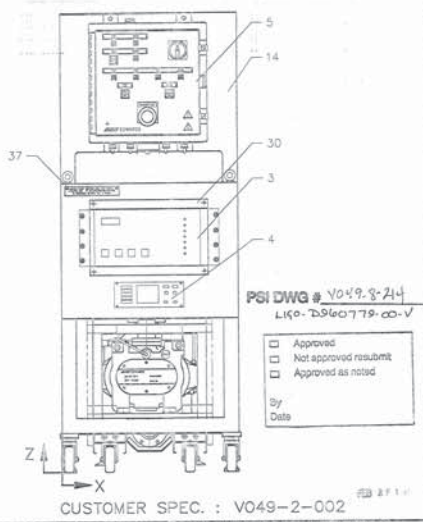
CONFLAT TORQUE SPEC.		
SIZE	BOLT	TORQUE
2.75	1/4-28 x 1.25	16 FT LB MAX.
12.00	5/16-24 x 3.00	26 FT LB MAX.

ESTIMATED CENTER OF GRAVITY				
DESCRIPTION	WT.	X	Y	Z
QDP80	445 LBS.	12.00	21.00	15.00
STP2000/CART	620 LBS	12.25	25.42	37.00
QDP80/STP2000/CART	1065 LBS	12.14	23.37	27.84



1	MOLECULAR DRYPUMP : QDP80	
2	1 TURBOMOLECULAR PUMP : STP2000C	
3	1 TURBOMOLECULAR PUMP CONTROLLER	
4	1 GAUGE CONTROLLER	
5	1 MAIN ELECTRICAL ENCLOSURE	
6	1 REMOTE BOX	
7	1 ISOLATION VALVE : SIPV40P	
8	1 ISOLATION VALVE : PV40MK	
9	2 ISOLATION VALVE : PV16MK	
10	2 PIRANI VALVE : 2.75 CONFLAT	
11	1 COLD CATHODE : 2.75 CONFLAT	
12	1 H2O KIT : U10000661	C3116
13	1 FRAME	C3110
14	1 BRACKET SUPPORT : MAIN ELECTRICAL ENCLOSURE	C3113
15	1 BRACKET SUPPORT : REMOTE BOX	C3113
16	1 MOUNTING BRACKET : STP2000C TURBO PUMP	04538
17	1 BRACKET : HOLDING UPPER PIPING	B2711
18	1 BRACKET : NW40 BELLOWS	B2688
19	1 SPOOL : 12.00 CONFLAT W/PORTS	C3118
20	1 SPOOL : NW63 x ISO63 x 5.00 LONG	C3119
21	1 ADAPTER SPOOL : NW40 x NW40 x 1.68 LONG	A3531
22	1 SPOOL : NW40 x NW40 W/PORTS	C3123
23	1 ADAPTOR : NW40/ISO63	
24	1 ADAPTOR : NW16/2.75 CONFLAT	
25	1 ADAPTOR : NW40/2.75 CONFLAT	
26	1 SPOOL : NW40 x NW40 x 7.00 LONG	A1855
27	3 BELLOWS : NW40 x 1000mm LONG	
28	1 BELLOWS : NW40 x 123mm LONG	
29	1 TEE : NW40 x NW40 x NW40	
30	1 COVER : CONTROL PANEL FRONT	B2709
31	1 COVER : CONTROL PANEL INSIDE	B2709
32	2 STANDOFF : INSIDE CONTROL PANEL COVER	A3539
33	4 POLYURETHANE SPACERS : 1.75 O.D. x .50 THICK	A3521
34	24 NEOPRENE WASHER : 1.75 O.D. x .125 THICK	A3531
35	1 LABEL : WARNING DO NOT LIFT.....	A3536
36	1 LABEL : WARNING.....	A2985
37	1 LABEL : RETURN/REMAIN.....	A3542
38	8 EYEBOLTS : M12	

NOTE : PART NO'S. 18, 20, 23, AND 27 ARE NOT SHOWN IN TOP VIEW, SO THAT QDP80 INLET LOCATION CAN BE SHOWN.
EYEBOLTS (PART NO. 38) TO BE PLACED IN THE FOUR (4) UPPER CORNERS OF THE MAIN FRAME AND FOUR (4) ARE TO BE PLACED ON THE TURBO MOUNTING BRACKET (PART NO.16).



CUSTOMER SPEC. : VO49-2-002

DO NOT SCALE DRAWING				FOR CUSTOMER USE ONLY - NOT FOR REPRODUCTION			
EDWARDS	EDWARDS HIGH VACUUM INTERNATIONAL	EDWARDS	EDWARDS	EDWARDS	EDWARDS	EDWARDS	EDWARDS
A Division of the BOC Group, Inc.				A Division of the BOC Group, Inc.			
Rev	Issued	Date	By	App'd	Rev	Issued	Date
1	VS	12-28-95			1	VS	12-28-95
Checked	ALC	1/28/01			Checked	ALC	1/28/01
Approved					Approved		
Material No.	NGB050200	Rev. No.			Material No.	NGB050200	Rev. No.
Customer	PSI	Customer			Customer	PSI	Customer

MAIN TURBO CART
QDP80/STP2000C COMBINATION
WITH CONTROLLER
AND ACCESSORIES
D-4507